

HARLECH COURT, BUTE TERRACE, CARDIFF

Outline Landscape Proposals

Job no. **780.01**

Revision - P01

September 2024

DRAYCOTT GROUP



Revision	Date	Author	Approved
P01	16.09.2024	AGA	MHA

This document has been prepared by Haire Landscape Consultants Ltd on behalf of Draycott Group.



t. 07714 961358
m. mike@hairelandscapeconsultants.co.uk
w. hairelandscapeconsultants.co.uk

Haire Landscape Consultants Ltd
Upper Brechfa, Llandefalle, Brecon, Powys, LD3 0NG

Softworks

Tree planting

The planting of advanced nursery stock trees will:

- Reinforce the existing local green infrastructure
- Improve local biodiversity
- Mitigate the impacts of wind and rain and provide shade

Tree planting will also define spaces, frame views and highlight desire lines and focal points

All trees within the scheme will be root-balled. Minimum tree sizes are as follows:

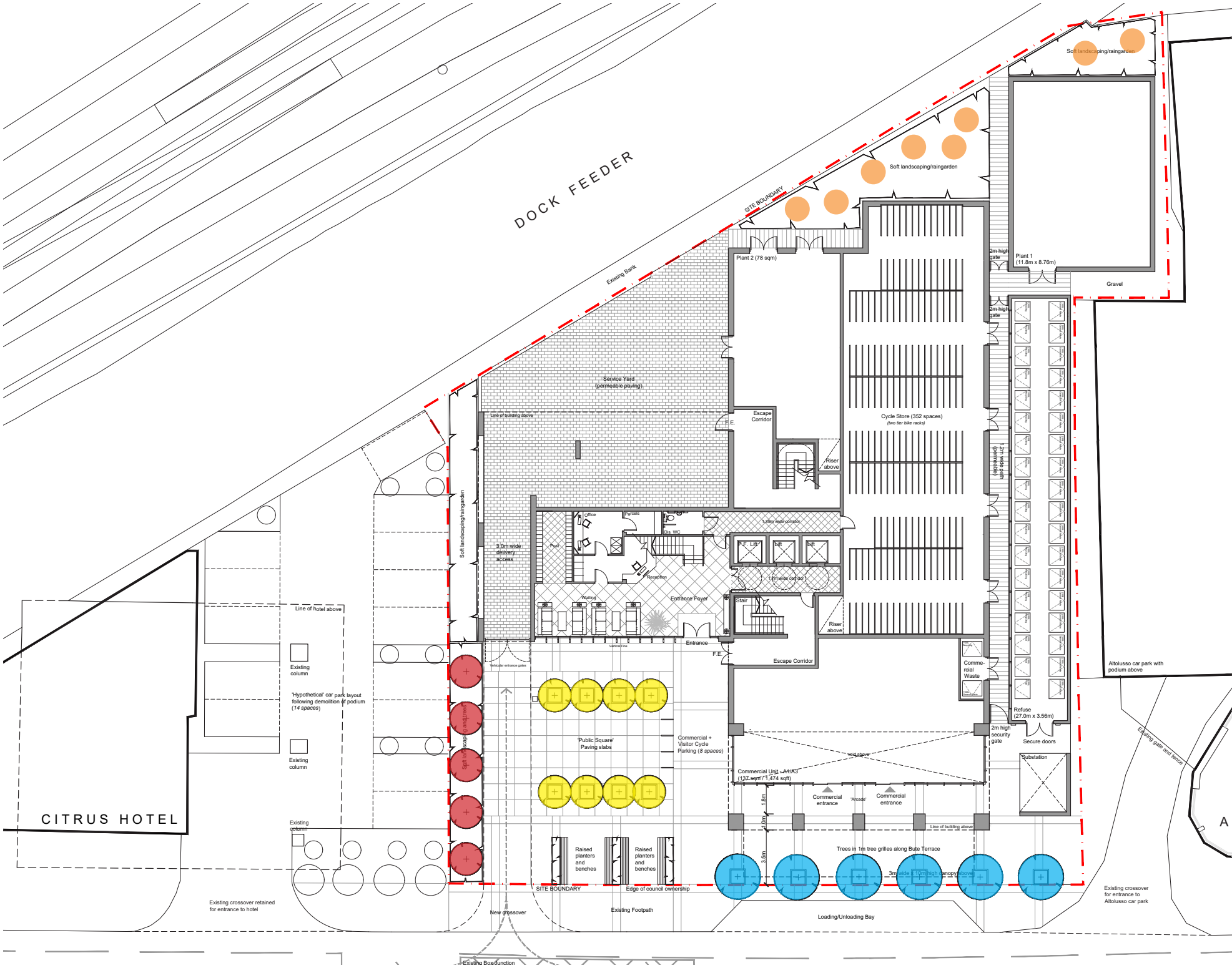
- Ground floor:
- Feature trees within Public Square: 20-25cm girth
 - Trees along Bute Terrace: 20-25cm girth
 - Trees within groundfloor planting: 14-16cm girth

- Roof Terrace:
- Multi-stem specimen trees: 3-4m tall
 - Standard trees in pots: 18-20cm girth

Specimen shrubs

Specimen shrubs (single large specimens) will add height within shrub planting and rain garden areas and will provide shelter and foraging opportunities for birds.

The palette of tree and shrub species proposed will help to define the character of the scheme and to integrate Harlech Court into its context. Species have been selected for their form, texture, seasonal interest and ecological value.



Betula pendula



Ginkgo biloba



Carpinus betulus 'Frans Fontaine'



Corylus avellana contorta



Cornus mas



Euonymus alatus

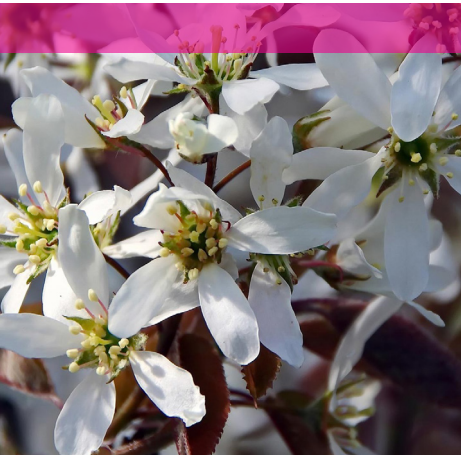


Viburnum opulus

Roof terrace (tree) planting

Tree planting is proposed on the twentieth and twenty first level roof terraces. Together with associated low-level planting of perennials, this will help define these spaces, frame views, provide shade and shelter from the wind.

Trees will be planted in raised planters in line with the ‘Typical detail’ below, with technical issues such as growing medium, guying, irrigation and maintenance by specialists.



Amelanchier lamarckii

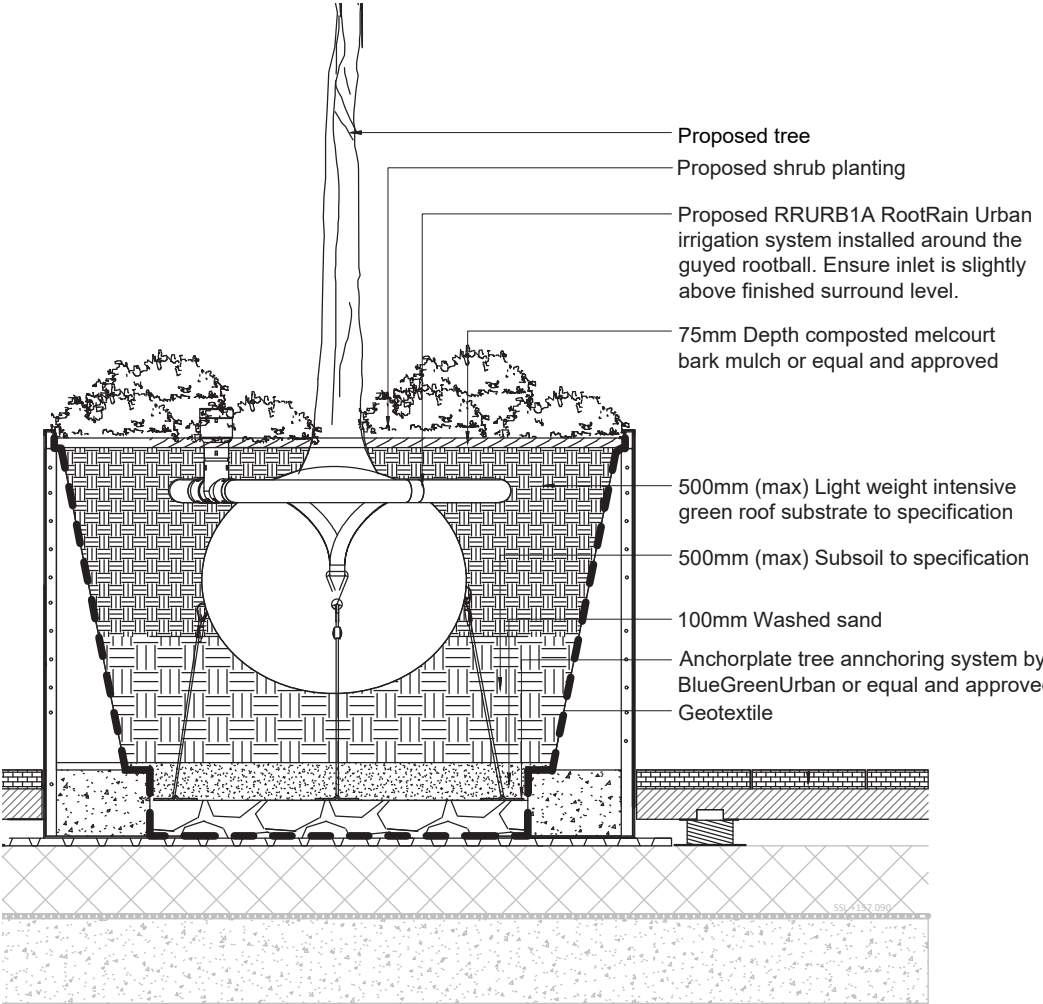
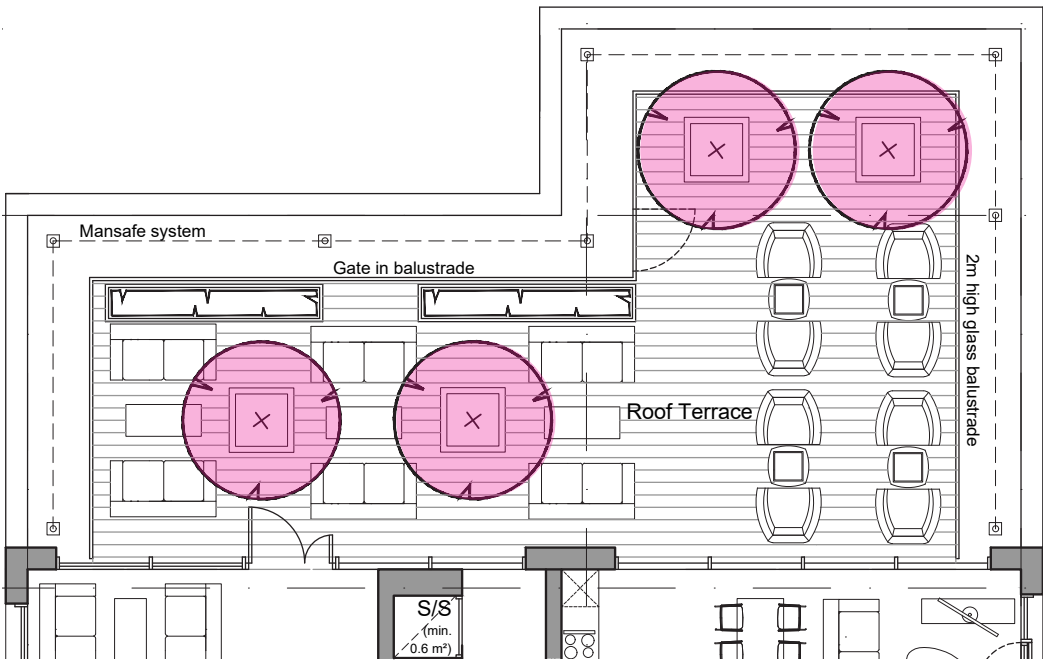


Betula jacquemontii



Betula pendula

Tree planting strategy - Level 20 Roof terrace



Detail 01 - Typical raised planter with tree detail

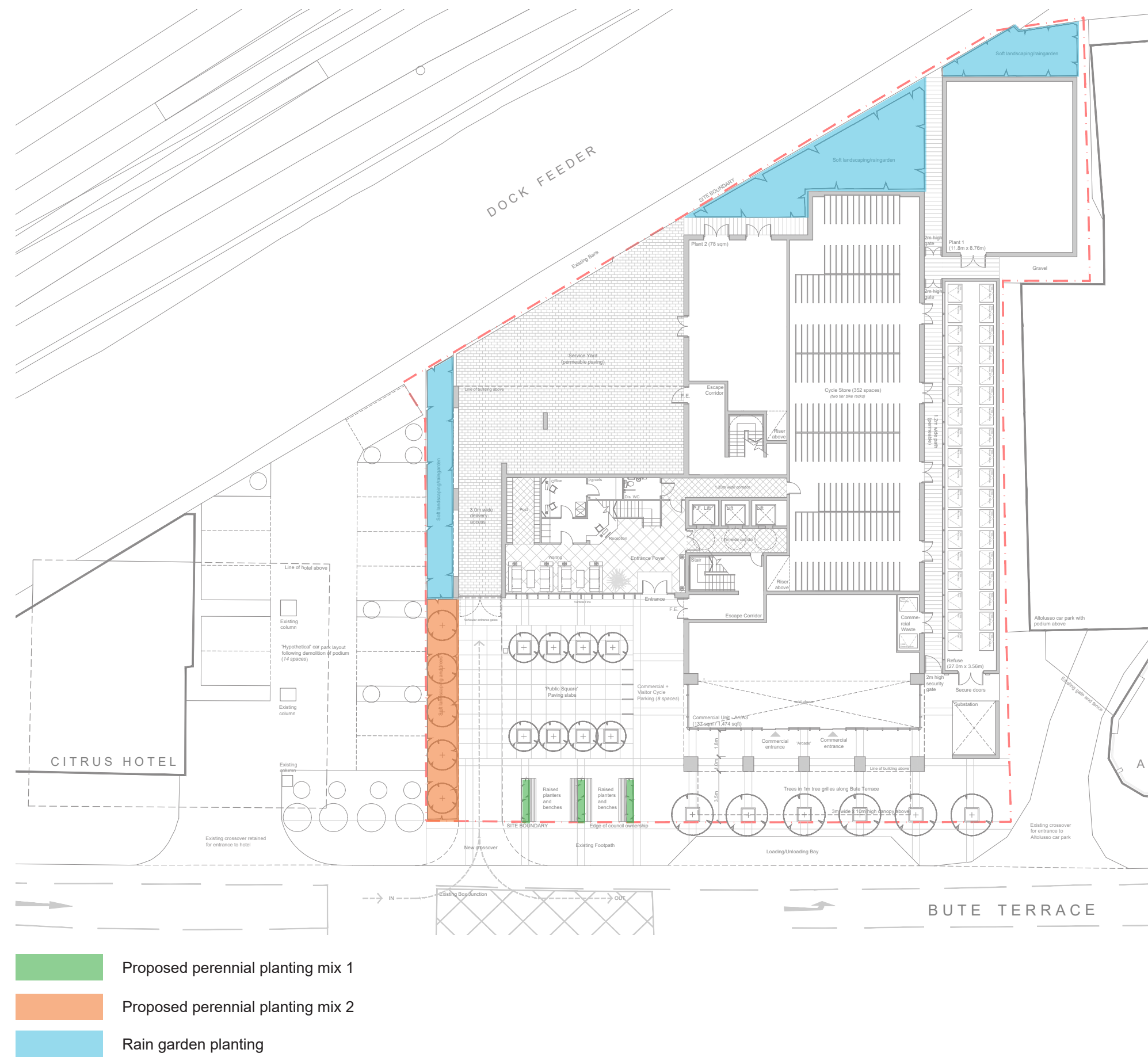
Tree planting strategy - Level 21 Roof terrace



Planting (ground floor)

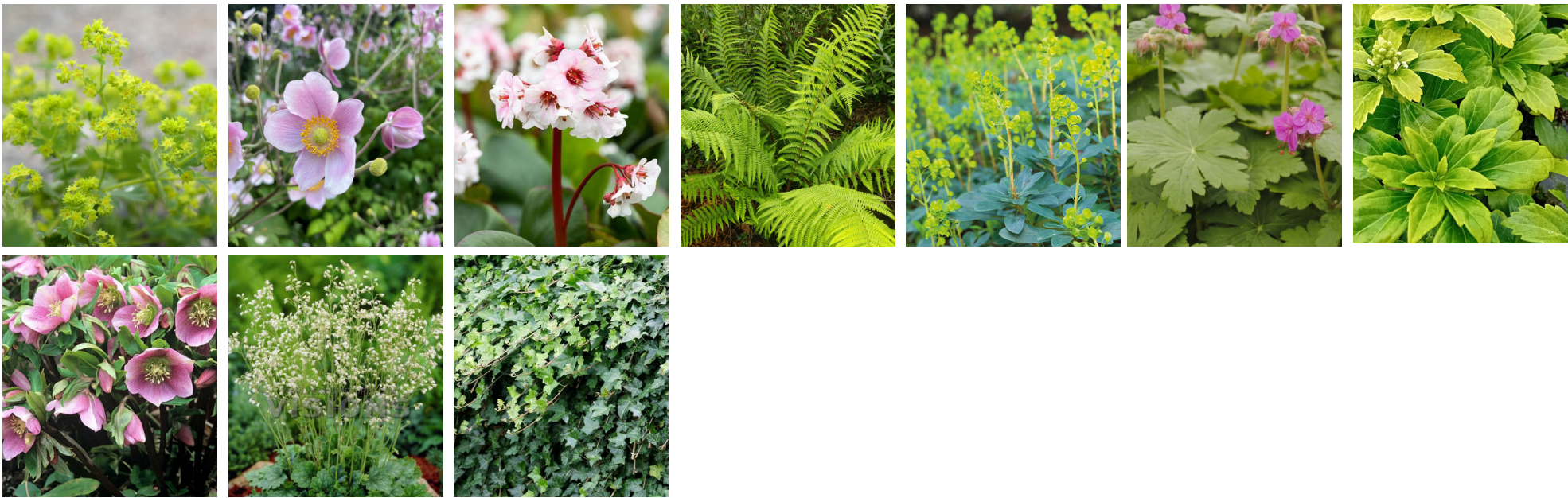
The shrubs and perennial species proposed for the front of the building will help soften the urban environment and complement the proposed tree planting by providing colour, texture and movement.

To the side and rear of the building the planting will include species that aid the ‘rain garden’ function of the space and provide more in the way of potential habitat. In these areas, the intention is to develop a combination of perennial, groundcover and shrub planting, this will be enhanced by the inclusion of the few larger shrubs that will increase biodiversity and habitat value.



Proposed perennial planting mix 1

- Alchemilla mollis
- Anemone hupehensis var. japonica
- Bergenia ‘Silberlicht’
- Dryopteris filix-mas
- Euphorbia amygdaloides var. robbiae
- Geranium macrorrhizum
- Helleborus orientalis
- Heuchera sanguinea ‘White Cloud’
- Pachysandra terminalis ‘Green Carpet’
- Hedera helix



Proposed perennial planting mix 2

- Echinacea purpurea ‘White Swan’
- Molinia caerulea
- Prunus ‘Otto Luyken’
- Rudbeckia goldsturm
- Calamagrostis ‘Karl foerster’
- Persicaria amplexicaulis ‘alba’
- Phlomis russeliana
- Skimmia japonica rubella
- Ceanothus thyrsiflorus repens
- Cornus sanguinea ‘midwinter fire’
- Hydrangea paniculata
- Pachysandra terminalis



Rain garden planting

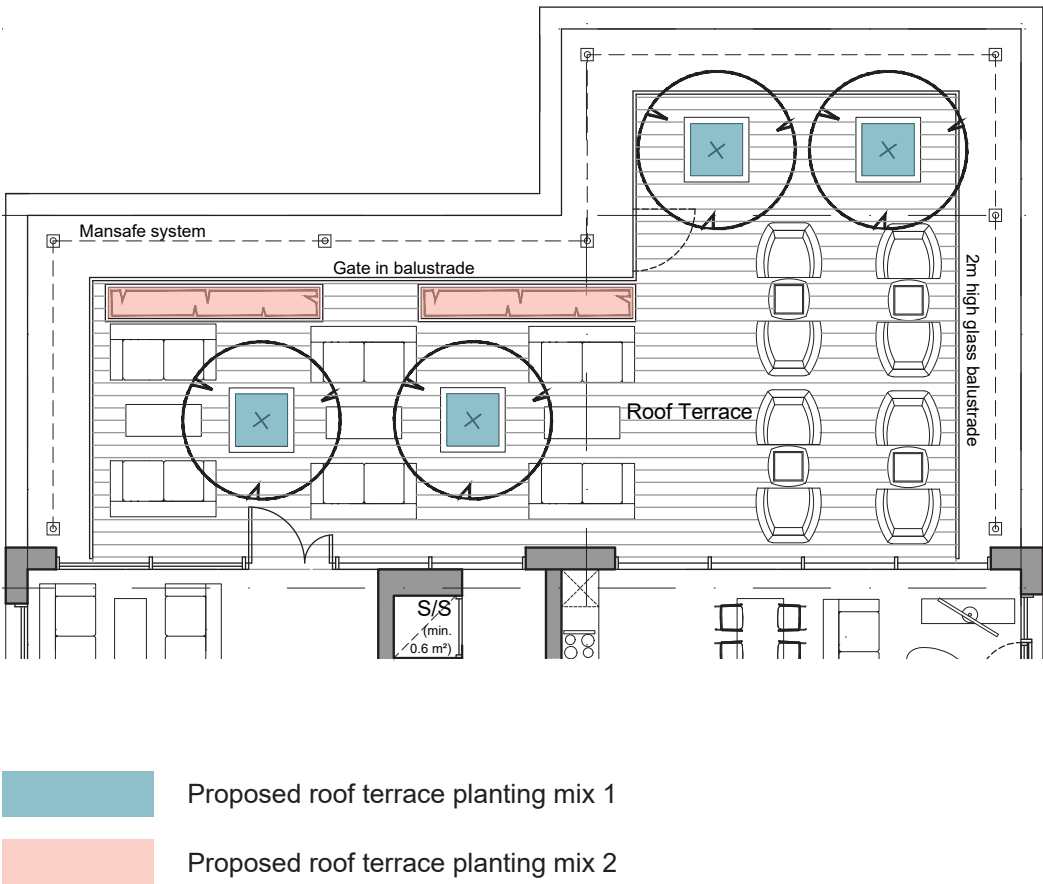
- Lythrum salicaria
- Iris pseudacorus
- Osmunda regalis
- Carex pendula
- Sanguisorba officinalis
- Eupatorium cannabinum
- Filipendula ulmaria
- Silene flos-cuculi
- Angelica sylvestris
- Juncus effusus



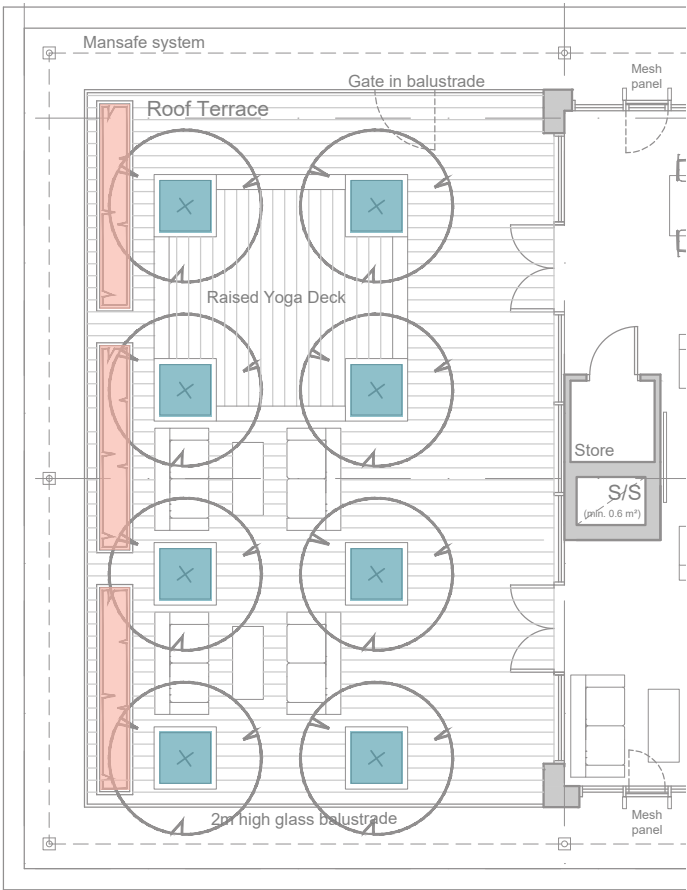
Roof Terrace (low-level) planting

The planting design for the roof terraces comprises a mixture of grasses and perennials. This combination will enhance biodiversity and complement the proposed tree planting by providing colour, texture and movement.

Tree planting strategy - Level 20 Roof terrace

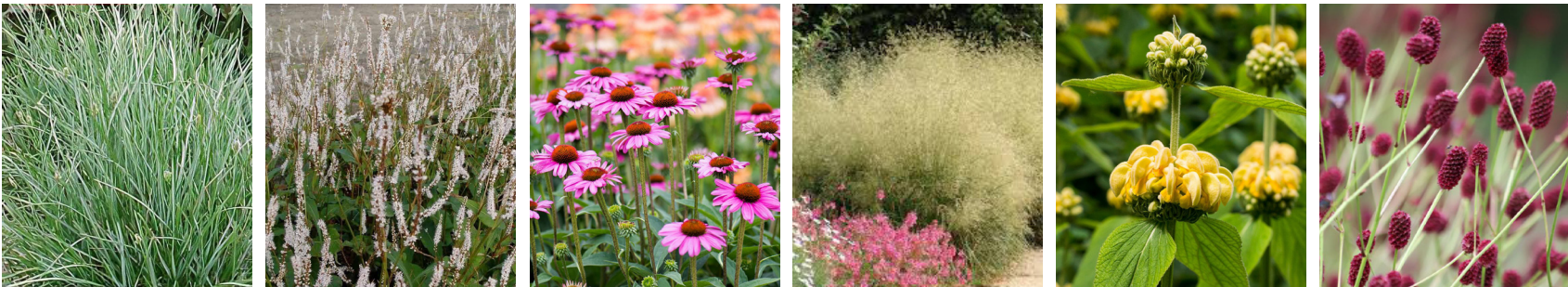


Tree planting strategy - Level 21 Roof terrace



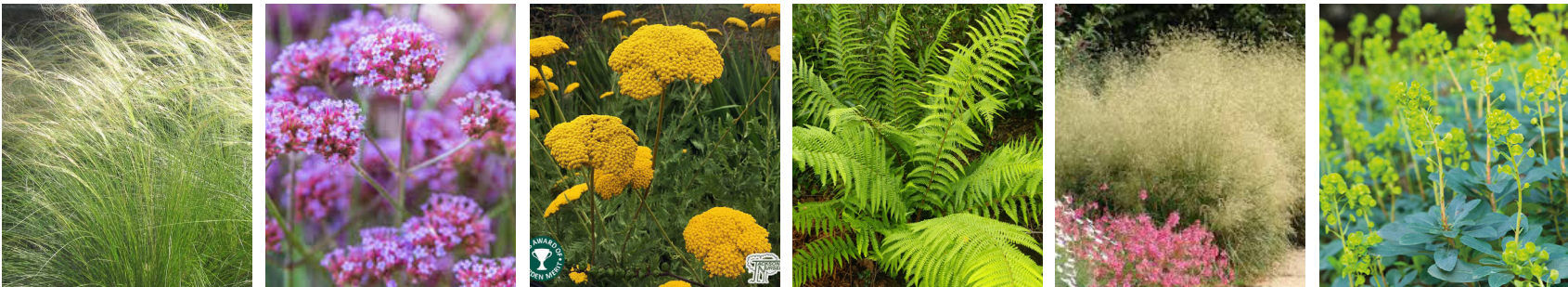
Proposed roof terrace planting mix 1

- Sesleria caerulea
- Pericaria amplexicaulis 'Alba'
- Echinacea purpurea
- Deschampsia cespitosa 'Goldtau'
- Sanguisorba officinalis
- Phlomis russeliana



Proposed roof terrace planting mix 2

- Nassella tenuissima
- Verbena bonariensis
- Achillea millefolium 'Moonshine'
- Dryopteris filix-mas
- Bergenia 'Silberlicht'
- Deschampsia cespitosa 'Goldtau'





t. 07714 961358

m. mike@hairelandscapeconsultants.co.uk

w. hairelandscapeconsultants.co.uk

Haire Landscape Consultants Ltd

Upper Brechfa, Llandefalle, Brecon, Powys, LD3 0NG