



MOVING TO
RHODE ISLAND

Deciding to move to a new place is a significant life decision that requires careful consideration. If you're contemplating a move and seeking a charming and diverse destination, Rhode Island might be the perfect choice. Known as the Ocean State, Rhode Island offers a unique blend of coastal beauty, cultural richness, and a strong sense of community.



PICTURESQUE COASTAL LIVING:

One of the standout features of Rhode Island is its breathtaking coastline. With over 400 miles of shoreline, the state offers an array of beautiful beaches, serene coves, and vibrant coastal towns. From the bustling streets of Newport to the tranquil shores of Narragansett, you'll find plenty of places to unwind, explore, and enjoy outdoor activities like sailing, kayaking, and beachcombing. The coastal vistas and cool sea breezes make everyday life feel like a vacation.





Rich Cultural Heritage:

Despite its small size, Rhode Island boasts a vibrant cultural scene that is deeply rooted in its history. The state played a pivotal role in the American Revolution and was also home to notable figures like Roger Williams, the founder of Rhode Island. The capital city of Providence offers an eclectic mix of theaters, galleries, and museums that celebrate both local and international arts. The annual WaterFire event, where bonfires illuminate the rivers of Providence, is a testament to the state's commitment to fostering a rich cultural atmosphere.



The diversity of Rhode Island's landscape allows residents and visitors to enjoy a wide range of recreational activities, from beach outings and hiking to exploring historic sites and enjoying cultural events. The state's compact size makes it easy to explore its various regions and experience the beauty and richness it has to offer.

Coastlines

Beaches

Islands

Forests

Rolling Hills and Valleys

Historic Sites

Quaint Villages

Urban Centers



Education Hub:

Rhode Island is renowned for its esteemed institutions of higher education. Brown University and the Rhode Island School of Design (RISD) are two world-class institutions located in Providence, attracting students, academics, and artists from around the globe. The proximity to these institutions not only offers opportunities for higher education but also enriches the community with intellectual discussions, artistic exhibitions, and innovative research.

Strong Sense of Community:

Rhode Island's size contributes to its strong sense of community. With a smaller population, it's easier to connect with neighbors and become involved in local initiatives. From farmers' markets to neighborhood festivals, you'll find numerous opportunities to engage with others who share your interests and values.



Quaint Historic Charm:

The state's historical legacy is palpable through its architecture and preserved landmarks. Stroll through the streets of Newport to admire the grand mansions built during the Gilded Age or explore the cobblestone streets of Providence's Federal Hill, known for its Italian heritage and delectable cuisine. The blend of old-world charm and modern amenities creates a unique and inviting atmosphere that appeals to a wide range of individuals.



While Rhode Island offers many appealing aspects, like any place, it also has its share of potential downsides. It's important to consider both the positives and negatives before making a decision to move. Here are some cons to moving to Rhode

Island:

Cost of Living:

Rhode Island's cost of living can be relatively high compared to the national average.

Traffic Congestion:

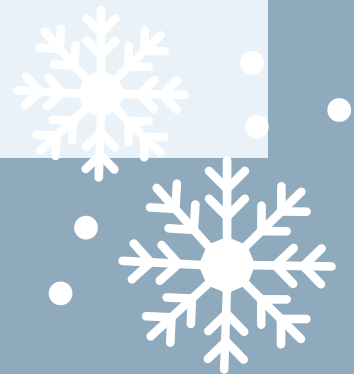
The state's small size and high population density can contribute to this issue, and public transportation is limited.

Seasonal Tourism Impact:

While the summer tourist season can bring energy and vibrancy to coastal areas, it can also lead to crowded beaches, traffic congestion, and higher prices for goods and services. This might be a downside for those who prefer a quieter environment.

Harsh Winters:

Rhode Island experiences cold and snowy winters, which might not be appealing to everyone. The winter weather can impact daily activities and travel plans. If you're not accustomed to dealing with cold temperatures and snow, you might find the winters challenging.



Moving to Rhode Island presents an opportunity to immerse yourself in a dynamic blend of natural beauty, cultural richness, and close-knit communities. Whether you're drawn to coastal living, seeking a thriving cultural scene, pursuing higher education, appreciating historic charm, or simply craving a strong sense of community, Rhode Island offers all of these and more. As you contemplate your next move, consider the Ocean State as a destination that can provide a unique and fulfilling quality of life. You are also a stone's throw away to NYC, Boston and rest of New England charm!

