



Volunteers

Volunteer Hours - 4,517 hours (Jan-Dec)
Over 70 volunteers!



Gallery

Over 350 Artists Participated in Shows and Opportunities in 2020



Education

560 Student Hours (Adult, Teen & Youth) in 2020;
262 Student Hours (Teen & Youth) for 2020 Summer Camps



Membership

Over 50% of MA Members live in Iredell County (30% hail from Mooresville - 28117; 18% hail from Mooresville - 28115);
Over 25% of MA Members live in Mecklenburg County; the Remainder of MA Members live in Cabarrus County, Rowan County and Other Counties in NC.



Social Media

Nearly 700 NEW Followers in 2020
Over 3,700 Followers

PRESIDENT'S MESSAGE

Two words describe Mooresville Arts in the last few years:

Constant Growth.

Mooresville Arts has evolved continuously, for the better, in every facet of our organization. From gallery exhibits, to our summer camp program, to special events, to much-needed improvements within our building, all of these examples have advanced Mooresville Arts.

How did all of this progress happen? **People.**

The Board of Directors for Mooresville Arts; its staff and volunteers; its Members, supporters and community partners – all of these people have contributed to the growth and success of our organization.

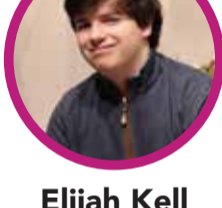
Mooresville Arts has an amazing group of loyal volunteers, and even during 2020 with a pandemic, we still grossed over 4,500 volunteer hours! We are fortunate to have dedicated volunteers who have supported our programs and organization, and without these people, none of what we have accomplished would have been possible. Of course, it is important to always think ahead and think of "what next?"; "what more?"; "how can things be better?", but it is also important to remember where we used to be and where we began.

If you are reading this, chances are you are one of the collective that has contributed to the betterment of Mooresville Arts. If not, I hope that this letter encourages you and inspires you to become more involved. If each and every one of us could think "how can I contribute?" then the organization can grow even stronger. We welcome new volunteers and fresh ideas! Volunteers willing to take the initiative and action necessary will be the driving force behind the future success of Mooresville Arts. Strength comes in numbers, and our organization will continue to prosper, and best serve the artists and our community with more Members, Volunteers and Patrons at the helm.

On behalf of the Board of Directors, we appreciate you for being a part of Mooresville Arts.

Thank you kindly,
Jessica DeHart
Board President

TESTIMONIALS



Elijah Kell

"I'm really glad to be part of Mooresville Arts because it offers great opportunities to show my art, connect with other artists and expand my reach as an artist into a new community. I'm looking forward to being more involved as I continue to grow my artistry and participate in additional activities and opportunities that Mooresville Arts provides."



Nancy Rosel Brown

"The cash award greeted me back to North Carolina last night after returning from a 3-week journey to New Mexico to tend to family. Thank you So-o-o much. It is an honor to have been selected to exhibit — and garner an award as well!
Thank you for the opportunities made possible through Mooresville Arts. Best regards and appreciation for all you and the Board do to keep arts alive as a beehive in the region".



Brad Lephew

"I'm a new artist that began last summer by drawing at home. As my interest increased, I sought on-site instruction for drawing and oil painting. I was happy to discover that Mooresville Arts provides this and opportunities to interact and learn from other artists. For me becoming a member was a way to participate in the local art community, increase my art education and skills, make new friends, volunteer, and expose my art to the public. I am very pleased with the opportunities that Mooresville Arts provides!"



Judy Riley

"My husband and I moved to Mooresville in 2012 and visited the gallery a few times before I became a member. We love that the Gallery is in an old train station right in the middle of downtown. The new gallery space and the overall feel of the Gallery demonstrates a commitment to great design and is welcoming and historic. The Mooresville Art Gallery and its community of artists and friends have inspired me to become more serious about my own art over the past few years. I enjoy entering shows and spending time with the artwork of others. I like how MAG includes all media in both shows and classes. Volunteering at the gallery makes me feel good about helping out and ensures that I see all the shows and stay in touch with what's happening. I look forward to socializing with other members and friends again soon."



Irene Jahns

"I had been looking for an art group to spend time with painting and chatting about artsy stuff. When I moved here six years ago, I found Mooresville Arts. It's a friendly, welcoming group that definitely fits that plus exhibiting and other opportunities. Camaraderie and inspiration!"

THANK YOU

Thank you to all of our 2020 donors, sponsors and community partners!

- Anonymous Donor | Shirley Ballard (in Memory of Carol Ann Whitmore Herring)
- Biggs Camera | Richard Blackmon | Cecilia Borders | Bragg Financial Advisors
- Nancy Brown | The Charles Mack Citizen Center | Charlotte Writers' Club
- Susan Czerwinski (in Honor of Allen E. Becker) | Deb & Jim Davis | Claudia Day
- Ric Erkes | Carol Files | Four Corners Framing & Gallery | Frame Warehouse
- Maryalice Gilbert | Dick Handshaw (in Honor of John Wood)
- Ralph Herring (in Memory of Carol Ann Herring) | Fariba & Cliff Homesley
- Iredell Arts Council | Lake Country Gallery | Lake Norman Realty
- Laurene, Rickher & Sorrell, PC | National Charity League, Inc.
- Natalia Leigh (in Honor of The Concord Police Department)
- Bonne McCoy | Mani Mistry | Mooresville Downtown Commission
- Mooresville Public Library | North Carolina Arts Council | On Tap Crafty Brews
- Ann & Richard Parker | PeopleSuite Talent Solutions | Judy Riley
- Rocky Mt. Music Co. | Jacqueline Smythe | SpeakAbility, Inc. | Jeannine Tieri
- Thomas & Webber, Law at the Lake | Town of Mooresville | John Vorlicek
- Deb & Beau Wagner (in Honor of the Parsons Family) | Wendy Wilkinson