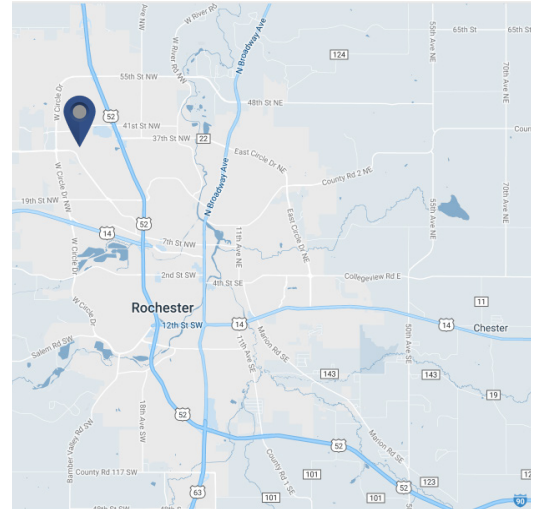
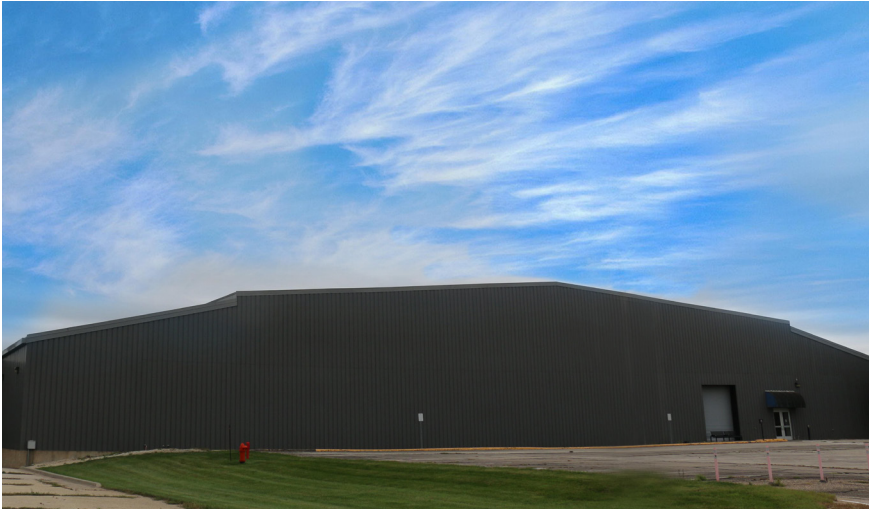


**AVAILABLE  
FOR LEASE:**

2900 37th Street NW  
Rochester, MN 55901

# ROCHESTER TECHNOLOGY CAMPUS



## BUILDING 203

Building 203 is set in a beautiful, campus setting among 34 buildings and 3.1 Million sq. ft. The campus offers various space with uses including office, manufacturing, warehouse, data center and laboratory. Tenant amenities include: Large meeting spaces suitable for conferences, an auditorium, cafeteria, and outdoor amenities such as tennis courts, playing fields and a disc golf course.

TYPE:	Light Manufacturing/ Warehouse
AVAILABLE SPACE:	154,220 SF
TOTAL BUILDING SIZE:	154,220 SF
COLUMN SPACING:	40' x 24'
CLEAR HEIGHT	10' - 37'
DOCKS:	(3) Enclosed
ZONING:	M-2
FLOOR LOADING:	125-500 PSF
RACKING:	5-HIGH
OTHER:	10,000 lb. Capacity Hydraulic Elevator; 500 KW (Shared) Outdoor Generator

**Jamey Shandley**  
Hamilton Real Estate, Inc.  
(507) 281-1002  
jamey@hamiltonmnre.com

**Onno Steger**  
IRG  
(614) 571-0012  
osteger@irg.cc

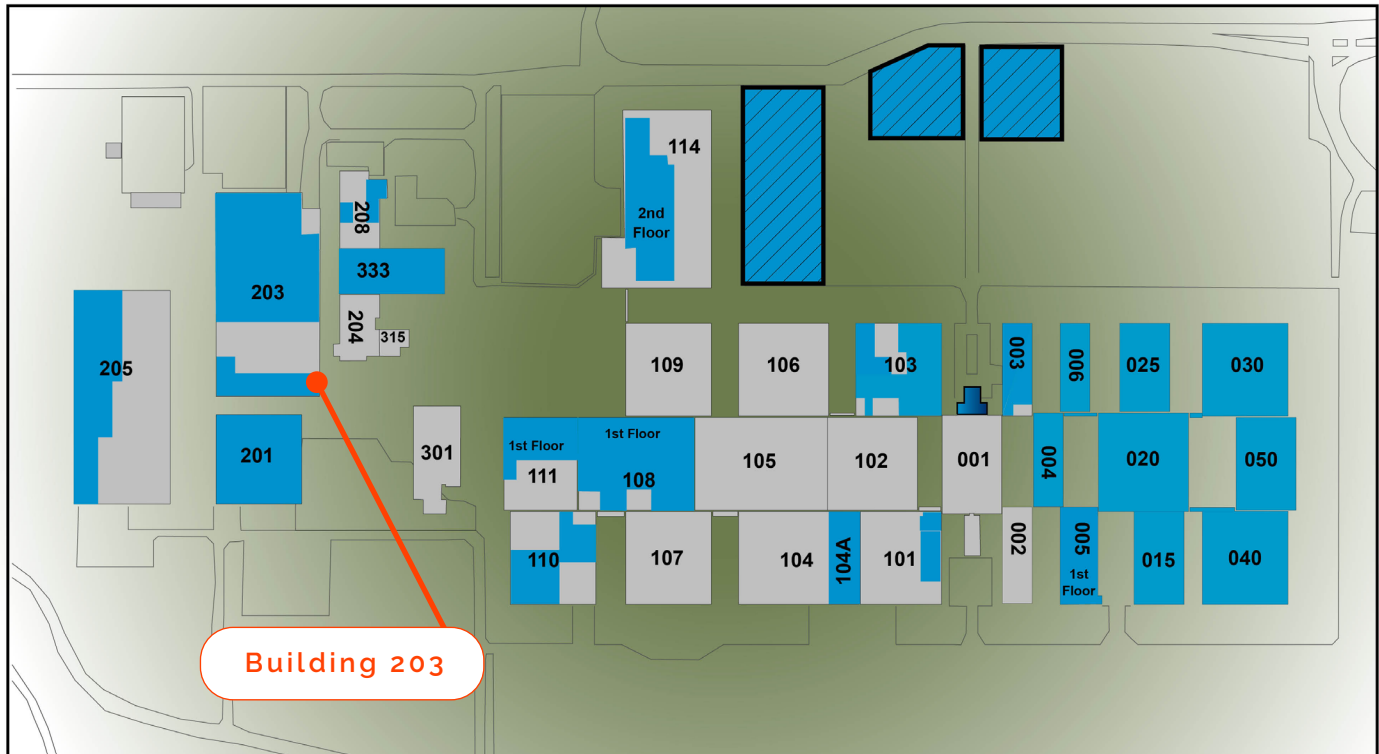
**Darrell Bossert**  
IRG  
(440) 539-4160  
dbossert@irg.cc

# AVAILABLE FOR LEASE:

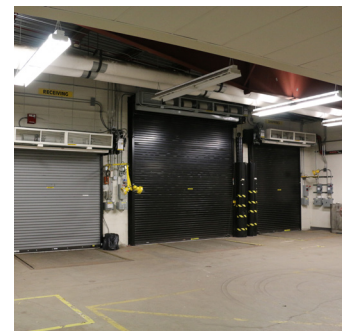
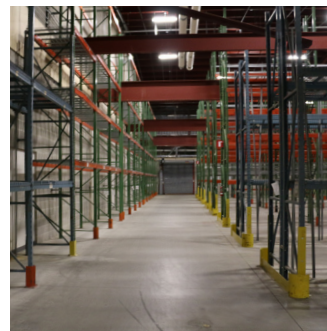
2900 37th Street NW  
Rochester, MN 55901

# R'OCHESTER TECHNOLOGY CAMPUS

## SITE PLAN



 Leased  
 Available



**Jamey Shandley**  
Hamilton Real Estate, Inc.  
(507) 281-1002  
jamey@hamiltonmnre.com

**Onno Steger**  
IRG  
(614) 571-0012  
osteger@irg.cc

**Darrell Bossert**  
IRG  
(440) 539-4160  
dbossert@irg.cc