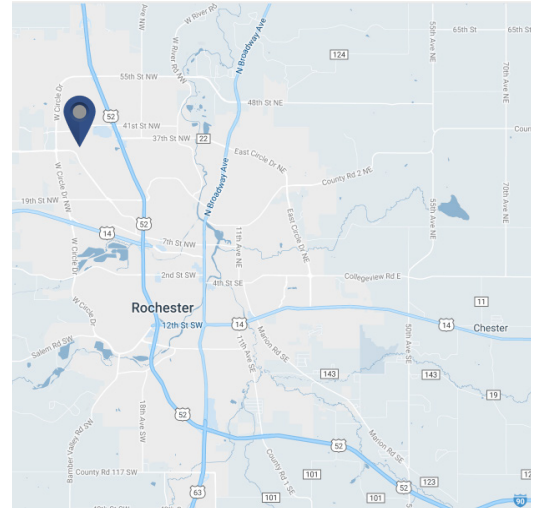


**AVAILABLE
FOR LEASE:**

2900 37th Street NW
Rochester, MN 55901

ROCHESTER

TECHNOLOGY CAMPUS



BUILDING 205

Building 205 is set in a beautiful, campus setting among 34 buildings and 3.1 Million sq. ft. The campus offers various space with uses including office, manufacturing, warehouse, data center and laboratory. Tenant amenities include: Large meeting spaces suitable for conferences, an auditorium, cafeteria, and outdoor amenities such as tennis courts, playing fields and a disc golf course.

TYPE:	Warehouse Manufacturing
AVAILABLE SPACE:	Main Floor Warehouse and Docks: 152,512 SF Office: 5,078 SF Mezzanine: 36,502 SF
TOTAL BUILDING SIZE:	194,092 SF
COLUMN SPACING:	22' x 22'
CLEAR HEIGHT	32'
DOCKS:	(8) Total with (4) Enclosed
ZONING:	M-2
FLOOR LOADING:	100 (Mezzanine) - 500 (Main Building) PSF
RACKING:	Partially Racked, Negotiable
HVAC:	Fully heated and cooled
ELEVATOR:	10,000 lb. Capacity Chain Drive Lift to Mezzanine

Jamey Shandley
Hamilton Real Estate, Inc.
(507) 281-1002
jamey@hamiltonmnre.com

Onno Steger
IRG
(614) 571-0012
osteger@irg.cc

Darrell Bossert
IRG
(440) 539-4160
dbossert@irg.cc

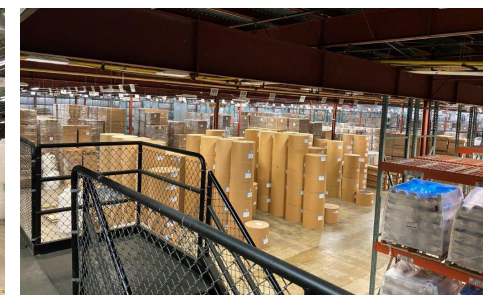
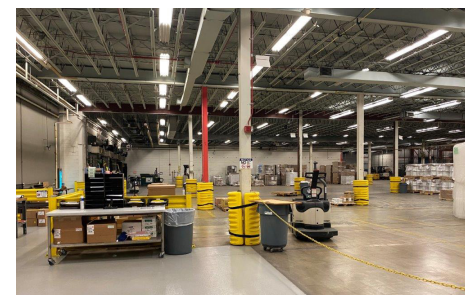
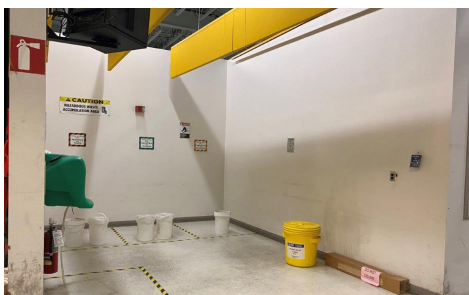
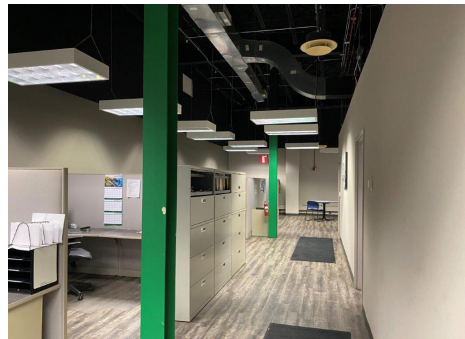
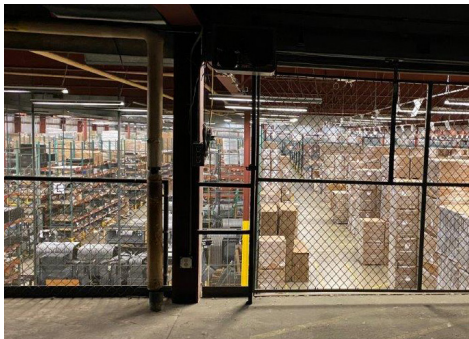
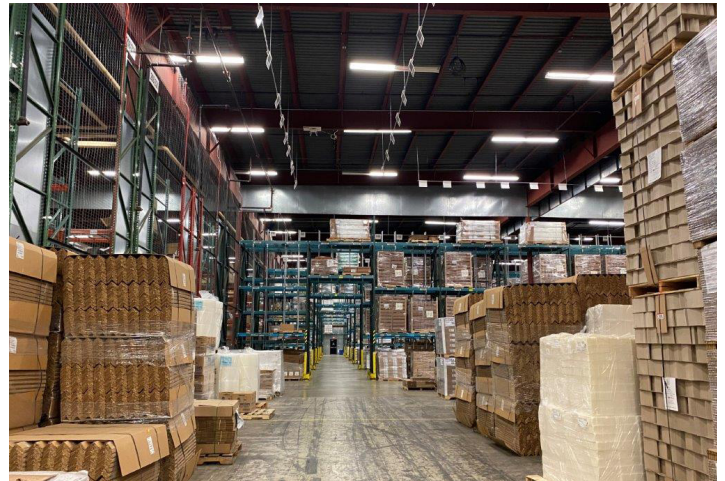
AVAILABLE
FOR LEASE:

2900 37th Street NW
Rochester, MN 55901

RÖCHESTER

TECHNOLOGY CAMPUS

PHOTOS





AVAILABLE FOR LEASE:

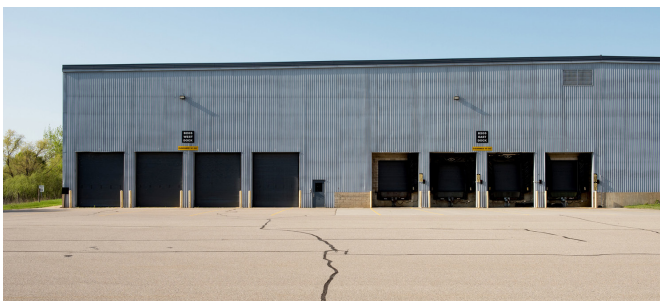
2900 37th Street NW
Rochester, MN 55901

RÖCHESTER TECHNOLOGY CAMPUS

SITE PLAN



-  Available
-  Leased
-  Utility



Jamey Shandley
Hamilton Real Estate, Inc.
(507) 281-1002
jamey@hamiltonmnre.com

Onno Steger
IRG
(614) 571-0012
osteger@irg.cc

Darrell Bossert
IRG
(440) 539-4160
dbossert@irg.cc