

INTRODUCING

# Fox Tales

GATED RURAL LIVING



LANTERN

REAL ESTATE GROUP



**JESSICA MOTTOLA**

770-376-7778

*Mallard*  
RESIDENTIAL



# Location

Find us at the intersection of  
2nd District and Chapel Hill

## Getting Here



Google Maps  
Search Fox Tales Dr



Apple Maps  
Search Fox Tales



Waze  
Search Fox Tales Dr





# Fox Tales

## Standard Features

- Gated Community
- Lighted Streets
- One Acre Lots
- Lush Landscaping
- 8' Front Doors
- Fiber Cement Siding
- Craftsman Detailing
- Granite Counters
- Designer Kitchens and Baths
- Soft Close Cabinets
- LVP and Tile Flooring
- Outdoor Fireplace
- Sodded Yards



# Our Team



## **PREFERRED LENDER**

**Matt DeCesaro**

Southeast Mortgage

NMLS #865043

Office: (770) 279-0222, Ext. 212

Cell: (404) 358-7313

Email: [Matt.DeCesaro@SoutheastMortgage.com](mailto:Matt.DeCesaro@SoutheastMortgage.com)



## **SALES AGENT**

**Jessica Mottola**

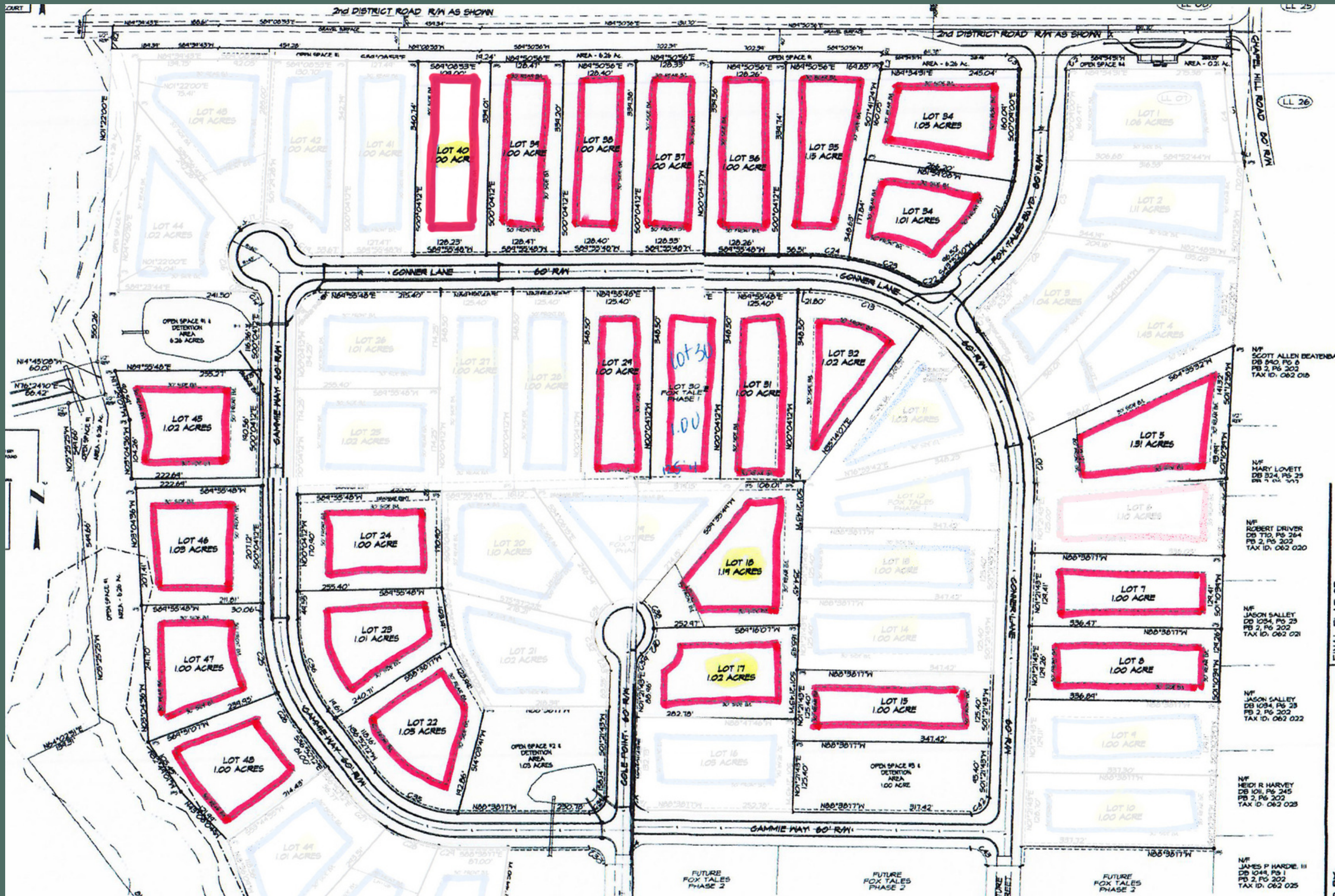
Lantern Real Estate Group

License #360131

Office: (770) 765-0005 (Alpharetta Office)

Direct: (770) 376-7778

Email: [jmottola@lanternrealestategroup.com](mailto:jmottola@lanternrealestategroup.com)



# Available Lots

Choose one of our plans or bring your own. Fox Tales offers a variety of slab and basement lots.

View our plans on the following page.

Prices start in the \$470,000s.



POPLAR



**MAIN LEVEL FLOOR PLAN**



**UPPER LEVEL FLOOR PLAN**





**COTTONWOOD**



**MAIN LEVEL FLOOR PLAN**

COTTONWOOD



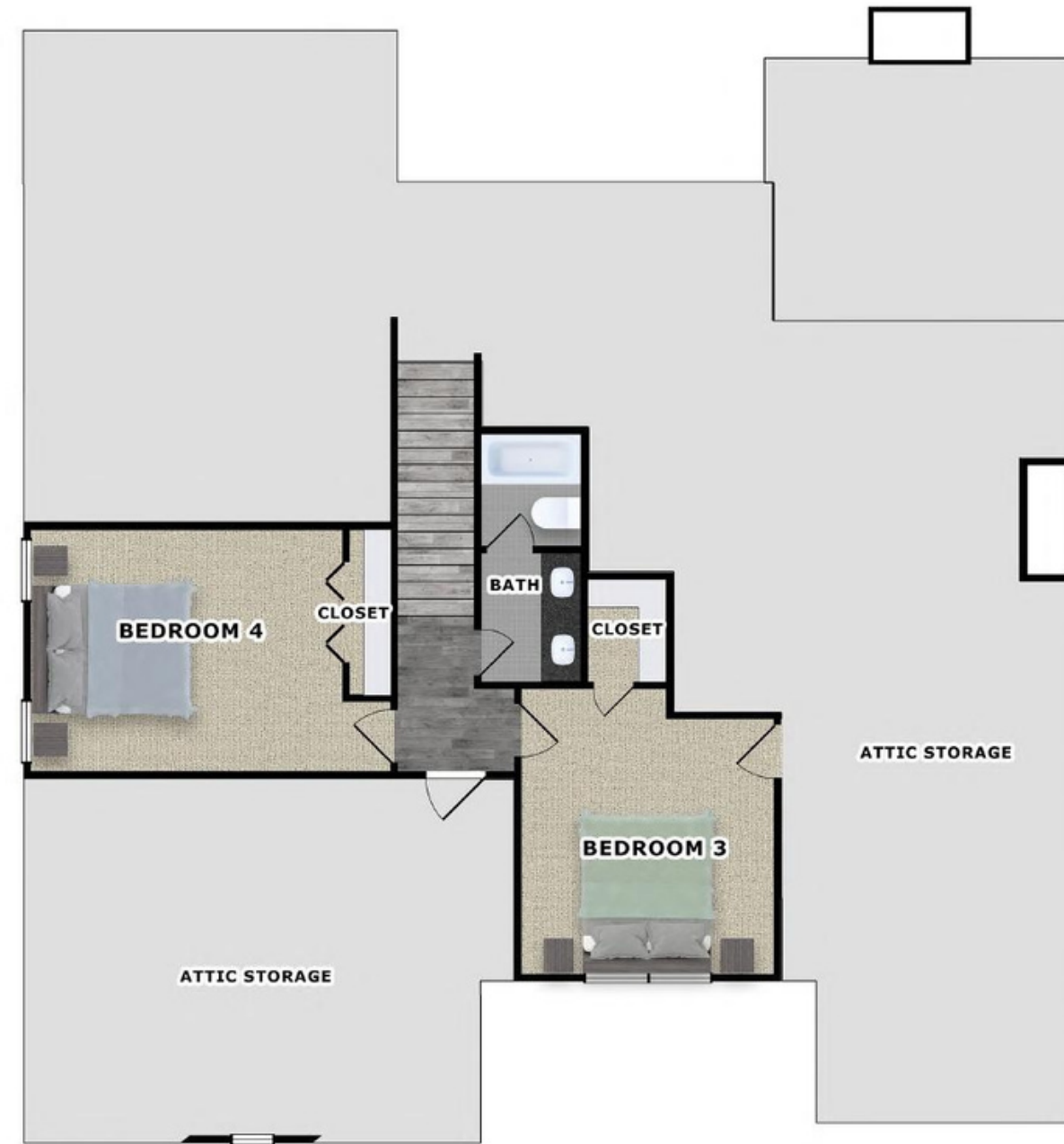
**UPPER LEVEL FLOOR PLAN**



**LONGLEAF PINE**



**MAIN LEVEL FLOOR PLAN**



**UPPER LEVEL FLOOR PLAN**

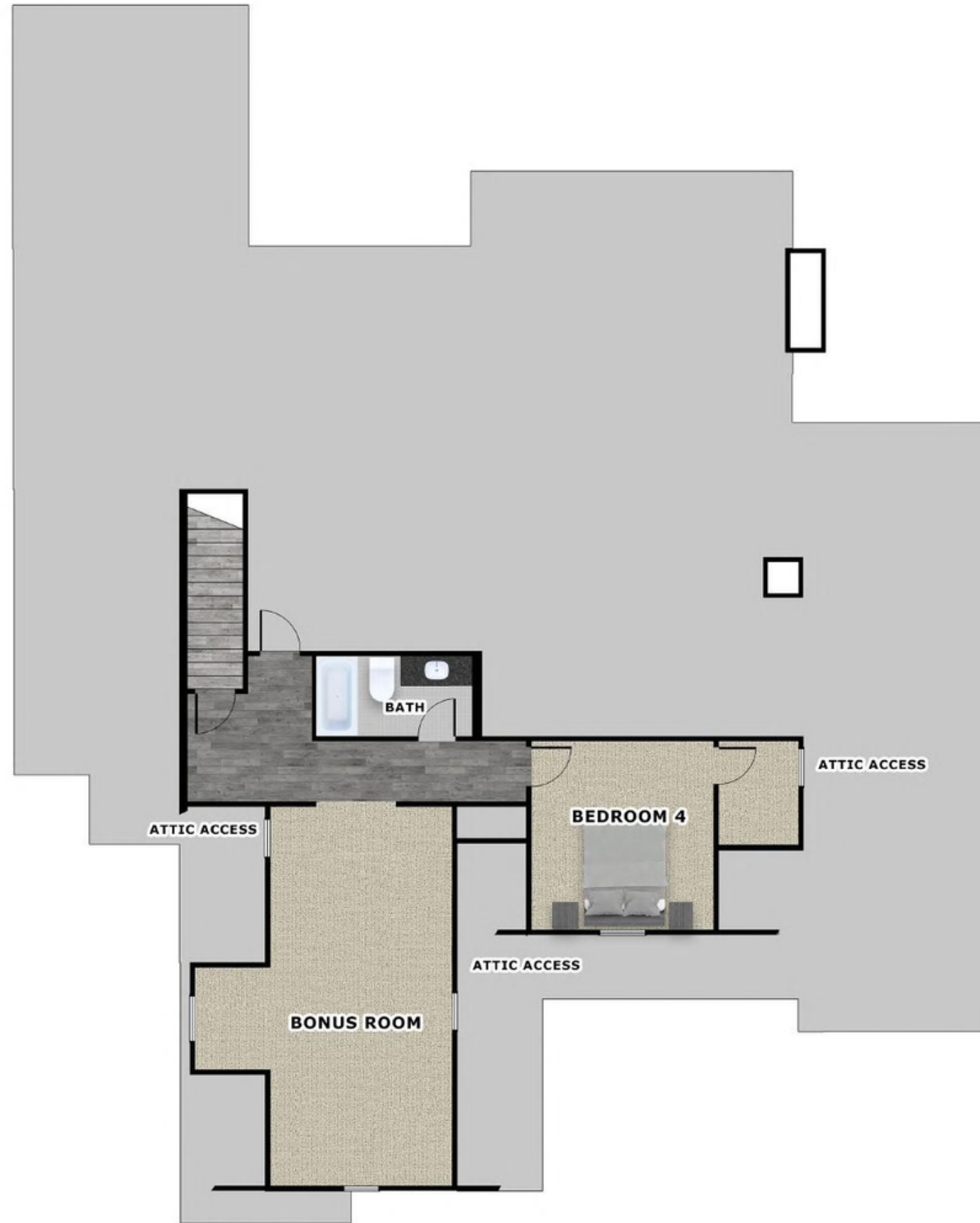


RIVER BIRCH



**MAIN LEVEL FLOOR PLAN**





**UPPER LEVEL FLOOR PLAN**

RIVER BIRCH



**WILLOW OAK**



**MAIN LEVEL FLOOR PLAN**



**UPPER LEVEL FLOOR PLAN**