

The Cottages

AT LAKE REDWINE

PHOEBE

ELEVATION B



MAIN FLOOR - 2,060SQ FT | 3 BEDROOMS | 2 BATHS

Expanded with Upper Floor - 2,604SQ FT | 4 BEDROOMS | 3 BATHS

Have your cake and eat it on the front porch or the back. The Phoebe 2 adds a rocking chair front porch by adjusting the flex and laundry rooms without sacrificing the enormous back porch. The back porch has vaulted ceilings and a wood burning fireplace. The interior features a gallery entry hall that leads to the open living space. The kitchen features a huge walk in pantry, large center island, and a wide-open view of the vaulted family room with wood beams, fireplace, and built-ins. The primary suite sits privately at the rear of the plan with a large vaulted bedroom, spa bathroom with an oversized zero-entry tile shower with frameless enclosure, and a huge walk in closet. Secondary bedrooms are situated on either side of the entry hall. Wood tread staircase leads to the optional upper level which adds 544 sq ft of additional living space, bedroom, and bathroom.

MAIN FLOOR - B



770-765-0005

JESSICA MOTTOLA

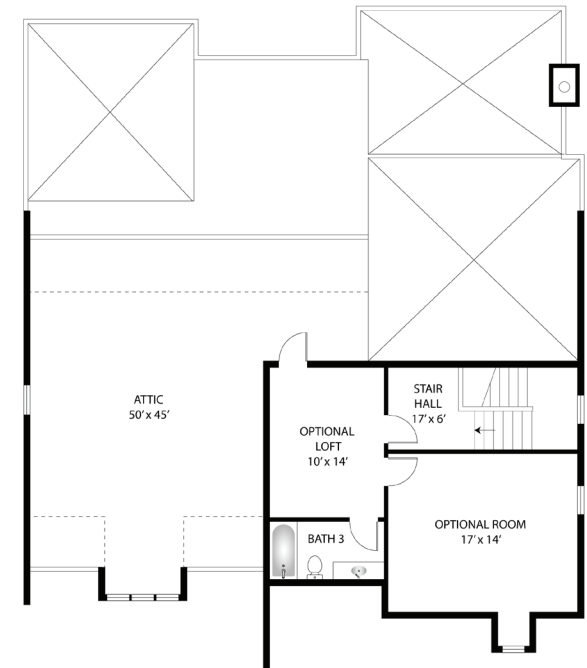
DIRECT: 770-376-7778

jmottola@lanternrealestategroup.com

TheCottagesAtLakeRedwine.com



UPPER FLOOR



LICHTY BROTHERS HOMES, INC
From Our Family To Yours