

The Cottages

AT LAKE REDWINE

STARLING

ELEVATION A

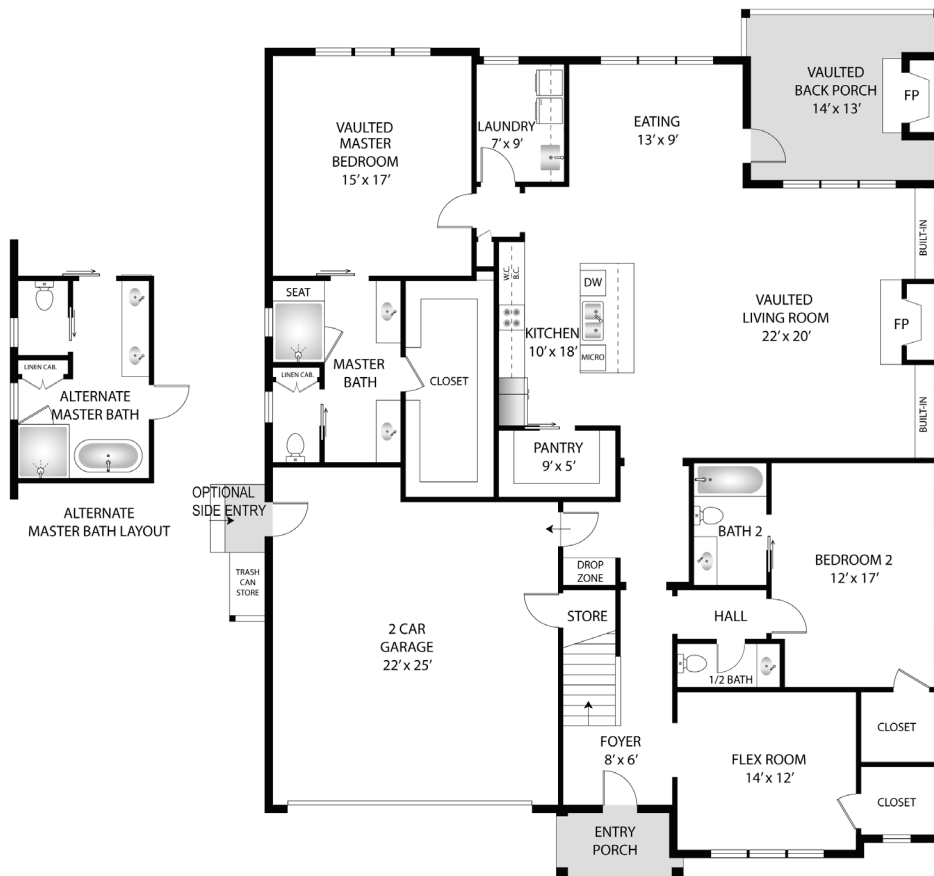


MAIN FLOOR - 2,201 SQ FT | 3 BEDROOMS | 2.5 BATHS OR 3.5 BATHS

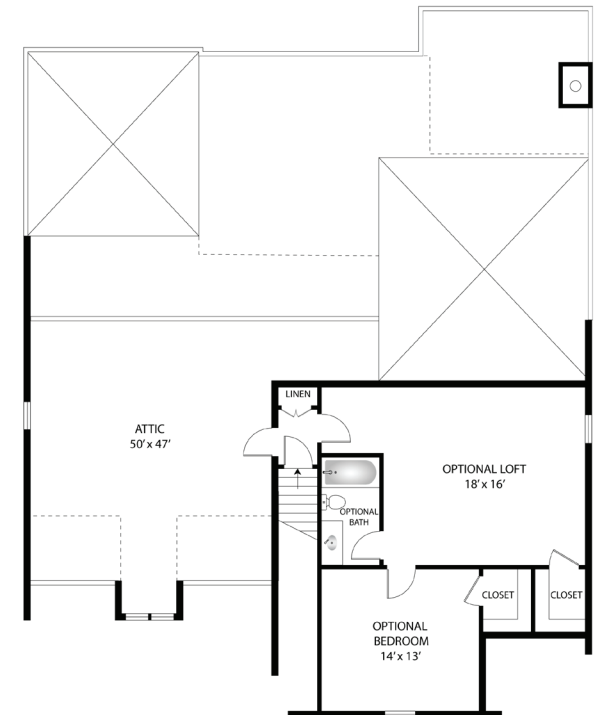
Expanded with Upper Floor - 2,882 SQ FT | 4 BEDROOMS | 4.5 BATHS

This home features a covered front entry and a covered back porch with vaulted ceilings and fireplace. Light filled kitchen centers around a huge island and features a walk in pantry. The kitchen is open to the dining area and the family room which has vaulted ceilings with wood beams, fireplace, and built-ins. Private primary suite located on the back of the home features a large vaulted bedroom, spa bathroom with an oversized zero-entry tile shower with frameless enclosure, a huge walk in closet, and easy access to the large laundry room. Secondary bedrooms are thoughtfully distanced from the primary suite and perfectly situated for a guest room and an office. Wood tread staircase leads to the upper level which can be finished as an upgrade option which adds 681 sq ft of bedroom, bathroom, and living area.

MAIN FLOOR



UPPER FLOOR



The Cottages

AT LAKE REDWINE

STARLING

ELEVATION B



MAIN FLOOR - 2,201 SQ FT | 3 BEDROOMS | 2.5 BATHS OR 3.5 BATHS

Expanded with Upper Floor - 2,882 SQ FT | 4 BEDROOMS | 4.5 BATHS

This home features a covered front entry and a covered back porch with vaulted ceilings and fireplace. Light filled kitchen centers around a huge island and features a walk in pantry. The kitchen is open to the dining area and the family room which has vaulted ceilings with wood beams, fireplace, and built-ins. Private primary suite located on the back of the home features a large vaulted bedroom, spa bathroom with an oversized zero-entry tile shower with frameless enclosure, a huge walk in closet, and easy access to the large laundry room. Secondary bedrooms are thoughtfully distanced from the primary suite and perfectly situated for a guest room and an office. Wood tread staircase leads to the upper level which can be finished as an upgrade option which adds 681 sq ft of bedroom, bathroom, and living area.