

# The Cottages

AT LAKE REDWINE

WREN

ELEVATION A



**MAIN FLOOR - 2,118 SQ FT | 3 BEDROOMS | 2.5 BATHS OR 3 BATHS**

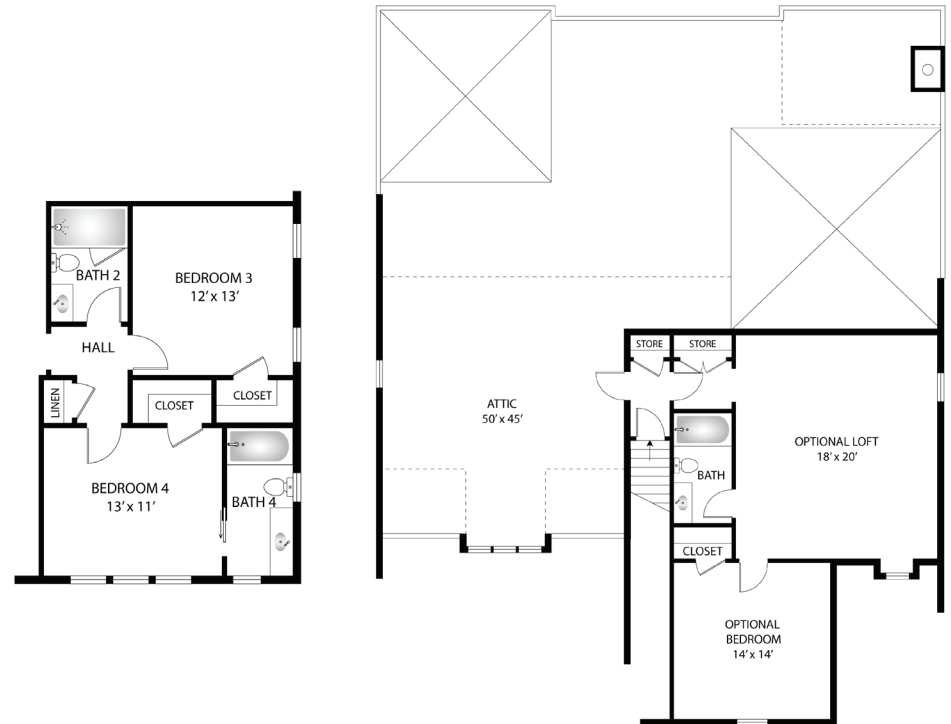
**Expanded with Upper Floor - 2,872 SQ FT | 4 BEDROOMS | 4 BATHS**

This home features a large front porch and a covered back porch with vaulted ceilings and fireplace. Bright and spacious kitchen with large island and a walk in pantry is open to the dining area and the family room which has vaulted ceilings with wood beams, fireplace, and built ins. Private primary suite located on the back of the home features a spacious vaulted bedroom, spa bathroom with an oversized zero-entry tile shower with frameless enclosure, a generous walk in closet, and easy access to the large laundry room. Secondary bedrooms are thoughtfully distanced from the primary suite and perfectly situated for a guest room and an office. Wood tread staircase leads to the upper level that can be finished as an expanded option adding 754 sq ft of bedroom, bathroom, and living area.

## MAIN FLOOR



## UPPER FLOOR





# The Cottages

AT LAKE REDWINE

WREN

ELEVATION B



**MAIN FLOOR - 2,118 SQ FT | 3 BEDROOMS | 2.5 BATHS OR 3 BATHS**

**Expanded with Upper Floor - 2,872 SQ FT | 4 BEDROOMS | 4 BATHS**

This home features a large front porch and a covered back porch with vaulted ceilings and fireplace. Bright and spacious kitchen with large island and a walk in pantry is open to the dining area and the family room which has vaulted ceilings with wood beams, fireplace, and built ins. Private primary suite located on the back of the home features a spacious vaulted bedroom, spa bathroom with an oversized zero-entry tile shower with frameless enclosure, a generous walk in closet, and easy access to the large laundry room. Secondary bedrooms are thoughtfully distanced from the primary suite and perfectly situated for a guest room and an office. Wood tread staircase leads to the upper level that can be finished as an expanded option adding 754 sq ft of bedroom, bathroom, and living area.



# The Cottages

AT LAKE REDWINE

STARLING

ELEVATION A



**MAIN FLOOR - 2,201 SQ FT | 3 BEDROOMS | 2.5 BATHS OR 3.5 BATHS**

**Expanded with Upper Floor - 2,882 SQ FT | 4 BEDROOMS | 4.5 BATHS**

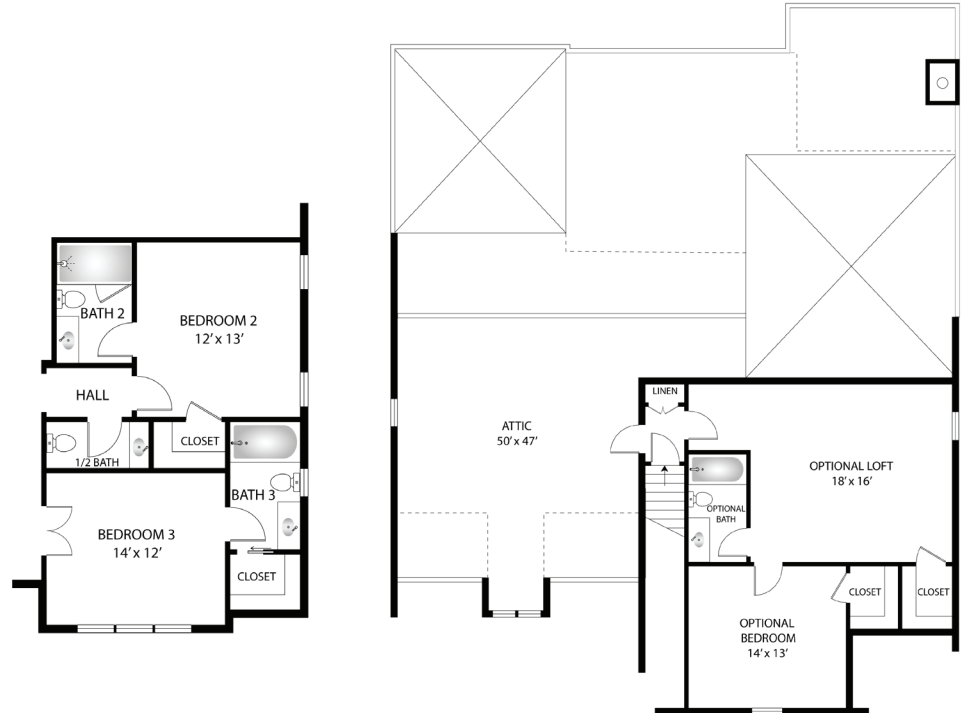
This home features a covered front entry and a covered back porch with vaulted ceilings and fireplace. Light filled kitchen centers around a huge island and features a walk in pantry. The kitchen is open to the dining area and the family room which has vaulted ceilings with wood beams, fireplace, and built-ins. Private primary suite located on the back of the home features a large vaulted bedroom, spa bathroom with an oversized zero-entry tile shower with frameless enclosure, a huge walk in closet, and easy access to the large laundry room. Secondary bedrooms are thoughtfully distanced from the primary suite and perfectly situated for a guest room and an office. Wood tread staircase leads to the upper level which can be finished as an upgrade option which adds 681 sq ft of bedroom, bathroom, and living area.



## MAIN FLOOR



## UPPER FLOOR



# The Cottages

AT LAKE REDWINE

STARLING

ELEVATION B



**MAIN FLOOR - 2,201 SQ FT | 3 BEDROOMS | 2.5 BATHS OR 3.5 BATHS**

**Expanded with Upper Floor - 2,882 SQ FT | 4 BEDROOMS | 4.5 BATHS**

This home features a covered front entry and a covered back porch with vaulted ceilings and fireplace. Light filled kitchen centers around a huge island and features a walk in pantry. The kitchen is open to the dining area and the family room which has vaulted ceilings with wood beams, fireplace, and built-ins. Private primary suite located on the back of the home features a large vaulted bedroom, spa bathroom with an oversized zero-entry tile shower with frameless enclosure, a huge walk in closet, and easy access to the large laundry room. Secondary bedrooms are thoughtfully distanced from the primary suite and perfectly situated for a guest room and an office. Wood tread staircase leads to the upper level which can be finished as an upgrade option which adds 681 sq ft of bedroom, bathroom, and living area.



# The Cottages

AT LAKE REDWINE

PHOEBE

ELEVATION A

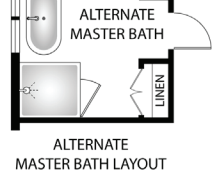
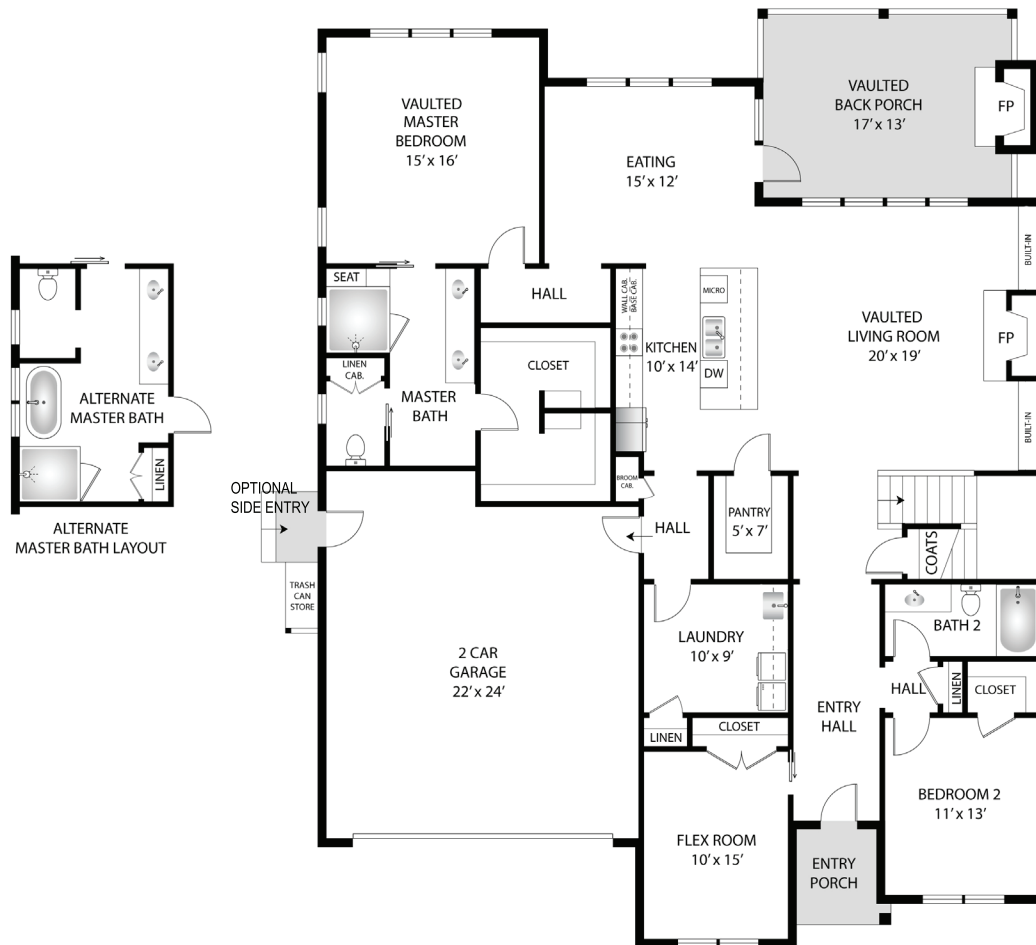


**MAIN FLOOR - 2,120SQ FT | 3 BEDROOMS | 2 BATHS**

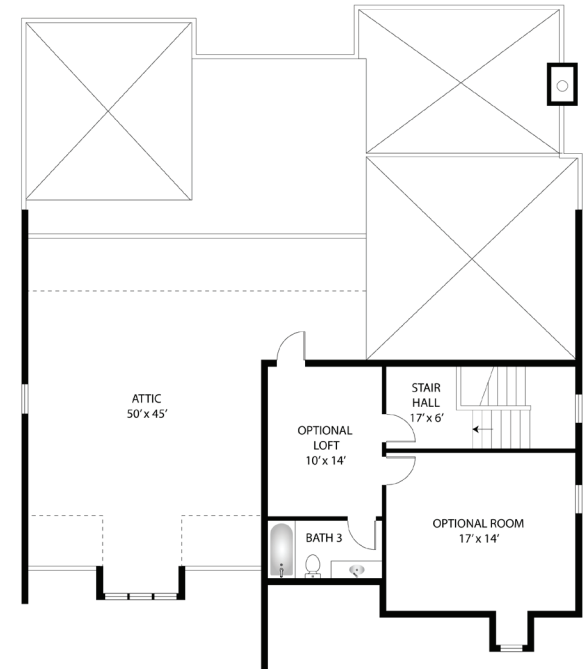
**Expanded with Upper Floor - 2,664SQ FT | 4 BEDROOMS | 3 BATHS**

This home features a recessed covered entry and the largest covered back porch of the plans. The back porch has vaulted ceilings and a wood burning fireplace. The interior features a gallery entry hall that leads to the open living space. The kitchen features a huge walk in pantry, large center island, and a wide-open view of the vaulted family room with wood beams, fireplace, and built-ins. The primary suite sits privately at the rear of the plan with a large vaulted bedroom, spa bathroom with an oversized zero-entry tile shower with frameless enclosure, and a huge walk in closet. Secondary bedrooms are situated on either side of the entry hall. Wood tread staircase leads to the optional upper level which adds 544 sq ft of additional living space, bedroom, and bathroom.

## MAIN FLOOR - A



## UPPER FLOOR





# The Cottages

AT LAKE REDWINE

PHOEBE

ELEVATION B



**MAIN FLOOR - 2,060SQ FT | 3 BEDROOMS | 2 BATHS**

**Expanded with Upper Floor - 2,604SQ FT | 4 BEDROOMS | 3 BATHS**

Have your cake and eat it on the front porch or the back. The Phoebe 2 adds a rocking chair front porch by adjusting the flex and laundry rooms without sacrificing the enormous back porch. The back porch has vaulted ceilings and a wood burning fireplace. The interior features a gallery entry hall that leads to the open living space. The kitchen features a huge walk in pantry, large center island, and a wide-open view of the vaulted family room with wood beams, fireplace, and built-ins. The primary suite sits privately at the rear of the plan with a large vaulted bedroom, spa bathroom with an oversized zero-entry tile shower with frameless enclosure, and a huge walk in closet. Secondary bedrooms are situated on either side of the entry hall. Wood tread staircase leads to the optional upper level which adds 544 sq ft of additional living space, bedroom, and bathroom.

## MAIN FLOOR - B



## UPPER FLOOR

