



St. John's Lutheran School

LaRhonda Richards, Administrator
1032 NW 12th Street, Moore, OK 73160
P:
405-794-8686 • F: 405-300-5157
E: IrRichardsLaRhondaRichards

July 11, 2023

Parents, Guardians, and Students,

Welcom back to another exciting year at St. John's Lutheran School! We hope you had a fantastic summer filled with rest, relaxation, and memorable experiences. As wr embark on a new academic year, we are thrilled to have each and every one of you back with us.

At St. John's, we believe that education is a collaborative effort between the school, students, and parents. Youn support and involvement are essential to creating an engaging and nurturing learning environment. We encourage open communication, partnership, and active participation in your child's education throughout the school year.

Our dedicated and passionate team of educators has been working tirelessly to ensure that this year is filled with valuable learning experiences, growth opportunities, and meaningful connections. We strive to provide a well-rounded education that not only focuses on academic excellence but also nurtures character development, emotional intelligence, and a sense of communituy.

This year, we have some exciting initiatives planned to enhance the learning journey of our students. Our teachers worked to develop innovative and interactive lesson plans, and we will continue to leverage technology to curriculum to life. We will also organize various extr-curricular activities , clubs, and events to foster creativity, teamwork, and sense of belonging.

We strongly believe in the power of open communication and partnership, and we encourage you to reach out to us with any questions, concerns, or suggestions that you may have. Our doors are always open, and we are here to support you and your child every syep of the way.

We hope that this new year brings us together as a strong, motivated, and compassionate community. Let us embrace challenges, celebrate achievements, and create lasting memories together.

Once again, well back to St. John's! Together, let us make this academic year one of growth, success, and endless possibilities.

In Christ,

Ms. Richards



St. John's Lutheran School's Knights Code of Chivalry

1. Respond to adults with "Yes, ma'am" or "No, Sir."
2. Make eye contact when someone is speaking.
3. Congratulate the winner or when someone does something well.
4. Respect other students' comments, opinions, and ideas.
5. If you win, do not brag. If you lose, do not show anger.
6. Cover your mouth when you cough or sneeze and say excuse me.
7. Do not show disrespect with gestures.
8. Always say thank you when given something.
9. When you receive something, do not insult the gift or the giver.
10. Surprise others by performing random acts of kindness.
11. Do not ask for a reward for doing what is expected of you.
12. After dining in the cafeteria or elsewhere, be responsible for your trash.
13. When meeting new people, shake hands and repeat their name.
14. When offered food, take only your fair share.
If someone drops something and you are close to it, pick it up
15. Hold the door for people other than letting it close on them.
16. If someone bumps into you, excuse me, even if it was not your fault.
17. On a field trip, enter the building quietly.
18. On a field trip, compliment the place you are visiting.
19. During an assembly, do not speak or call out to friends.
20. While in the hall, keep quiet. Others are trying to learn.
21. Treat others how you would like to be treated.
22. Never be afraid to ask for help.
23. Listen to your teacher - they are there for you.
24. Never forget that mistakes are proof of learning.



A Letter for Our Pre-School Families:

We are very excited to begin our 2023/2024 school year! The joys of greeting returning students and the adventure of making friends with our newest students is always a treat and we can't wait to get started.

Before we kick off our school year, we would like to remind our Pre-K parents of our potty-training policy. Our Handbook states that all three-year-olds attending our Pre-K program must be fully potty-trained before they can join us at St. John's. This has been a policy that has been overlooked in the past and because of that, our teachers spent more time changing pull ups than focusing on the students and their activities.

We do understand that accidents happen and will be prepared for such incidents, but we ask that as the summer continues you and your little one work on using the potty and washing hands. If diapers or pull ups are still required for any children over the age of two, they will not be accepted for the Fall Semester.

If you have any questions regarding this policy, then please do not hesitate to call. We hope you have a wonderful summer and we look forward to seeing you in the Fall.

Best Regards,

Principal Richards

405.794.8686

richards@sj-es.org

AUGUST 2023

S	M	T	W	T	F	S
		1	2	3	4	5
6	7	8	9	10	11	12
13	14	15	16	17	18	19
20	21	22	23	24	25	26
27	28	29	30	31		

SEPTEMBER 2023

S	M	T	W	T	F	S
					1	2
3	4	5	6	7	8	9
10	11	12	13	14	15	16
17	18	19	20	21	22	23
24	25	26	27	28	29	30

OCTOBER 2023

S	M	T	W	T	F	S
1	2	3	4	5	6	7
8	9	10	11	12	13	14
15	16	17	18	19	20	21
22	23	24	25	26	27	28
29	30	31				

NOVEMBER 2023

S	M	T	W	T	F	S
			1	2	3	4
5	6	7	8	9	10	11
12	13	14	15	16	17	18
19	20	21	22	23	24	25
26	27	28	29	30		

DECEMBER 2023

S	M	T	W	T	F	S
					1	2
3	4	5	6	7	8	9
10	11	12	13	14	15	16
17	18	19	20	21	22	23
24/31	25	26	27	28	29	30

St. John's Lutheran School 2023/2024 Calendar

Board Approved 06/13/2022

Teacher report August 7th
Students report August 10th

Holidays/Breaks/Prof Dev

Sept 4 Labor Day
Sept 15 Lutheran Conf
Oct 6 P/T Conf
Oct 18 Field Trip
Oct 19-20 Fall Break
Nov 20-24 Thanksgiving
Dec 18-Jan 2 Winter Break
Jan 3 In-Service
Jan 15 MLK Jr Day
Mar 15 P/T Conf
Mar 18-22 Spring Break
Apr 19 Good Friday
May 21 Last Day
May 22 Records Day

Students out of School
Teacher Prof Days

1st Semester

Instructional Days 83
Professional Days 4
87

2nd Semester

Instructional Days 92
Professional Days 3
95

Total 182

JANUARY 2024

S	M	T	W	T	F	S
	1	2	3	4	5	6
7	8	9	10	11	12	13
14	15	16	17	18	19	20
21	22	23	24	25	26	27
28	29	30	31			

FEBRUARY 2024

S	M	T	W	T	F	S
				1	2	3
4	5	6	7	8	9	10
11	12	13	14	15	16	17
18/25	19/26	20/27	21/28	22/29	23	24

MARCH 2023

S	M	T	W	T	F	S
					1	2
3	4	5	6	7	8	9
10	11	12	13	14	15	16
17	18	19	20	21	22	23
24/31	25	26	27	28	29	30

APRIL 2024

S	M	T	W	T	F	S
	1	2	3	4	5	6
7	8	9	10	11	12	13
14	15	16	17	18	19	20
21	22	23	24	25	26	27
28	29	30				

MAY 2024

S	M	T	W	T	F	S
			1	2	3	4
5	6	7	8	9	10	11
12	13	14	15	16	17	18
19	20	21	22	23	24	25
26	27	28	29	30	31	

Preschool, Kindergarten & Elementary drop off/pick up procedures.

Preschool, Kindergarten & Elementary Drop off Procedure.

1. From 8:15-8:30 am parking lot **Drop off procedure** will begin. Enter through the parking lot main entrance. For ages 2-3 years will need to be accompanied by their parent or guardian to their assigned classroom. Pre-K 4/5 & Kindergarten – 8th Grade can be **Dropped Off** through the Drop- off / Pick-up line located on the South side alley, in between the School and the Church.
2. For ages 2-3 years, park in the school parking lot.
3. Escort your child through the West doors (Main doors).
4. Upon entering the building sign in your child through the ProCare App.
5. Exit through the **Main doors** (West entrance).

Preschool, Kindergarten & Elementary Pick-up Procedure.

1. From 3:30-3:45 pm parking lot **Pick- up procedure** will begin. Enter through the main entrance. For ages 2-3 years will need to be accompanied by their parent or guardian from their assigned classroom. Pre-K 4/5 & Kindergarten – 8th Grade can be **Picked Up** through the Drop- off / Pick-up line located on the South side alley, in between the School and the Church.
2. For ages 2-3 years, park in the school parking lot.
3. Walk in through the west doors (main doors).
4. Upon entering the building, you will sign out your child (Through the ProCare APP) and escort them to your vehicle.
5. Exit through the Pre-k/Kindergarten exit.

**SJLS Staff will be waiting at the South entrance doors to ensure your child's safety upon leaving the school. **

Parents with children in Pre-K/Kindergarten and 1st - 8th Grade.

Parents with children in this category will **follow the Preschool/Kindergarten drop off/pick up procedures**. The students in the 1st-8th Grade will walk to their siblings Pre-k/Kindergarten class and wait for their parents.

SJLS DROP-OFF/PICK-UP PROCEDURE



This is our traffic flow for Drop-Off & Pick-Up. The **Green pathway** is for our **Pre-k 4/5 & Elementary – 8th grade students**. Parents/Guardians will drop them off at 8:15am - 8:30am in the alley between the school and the church and pick them up in the same place from 3:30pm - 3:45pm. Then they will exit out through the church parking lot.

Preschool 2- & 3-year-old students will follow the **Blue pathway**. Parents/Guardians will park in our lot, bring their littles inside. Sign their child IN, then exit our lot going past the big playground. Pick up will be the same.

Please do not forget to sign your children in & out on the ProCare App.



1032 NW 12th Street, Moore, OK 73160
P: 405-794-8686 ▪ F: 405-300-5157
E: lrichards@sj-ls.org

We expect our students to reflect the Christian nature of the school by complying with the school dress guidelines. All students are expected to adhere to the following dress code:

Detailed Clothing Guidelines for 2022-2023

- All guidelines are for both boys and girls unless specified.
 - All clothing and accessories must be neat, clean, in good condition, and sized appropriately.
 - Clothing must not interfere with the safety of the child, especially during recess and PE activities. •
- Teachers reserve the right to make decisions on inappropriate dress.

Shirts	Gray, black, white, or red polo, turtleneck, or button-down shirt Long or short sleeves
Sweaters	Solid color crew neck or cardigan To be worn over polo, turtleneck, or button shirt w/ collar exposed Must be gray, black, white, or red
Hoodies	Solid gray, black, white, or red To be worn over polo, turtleneck, or button down shirt
Slacks/Pants – Non Jean Material	khaki or black solid color,
Shorts	khaki or black solid color Appropriate length just above the knee May only be worn in warm weather
Skirts, Skorts, Jumpers	Girls only- khaki or black Appropriate length just above the knee Shorts may be worn under skirt, skort, or jumper, but must be shorter than the skirt, skort, or jumper
Leggings, Yoga Pants, Etc.	Must be black, gray, or white May be worn under appropriate length shorts, skorts, or jumpers (not as pants)
Socks, Stockings, Tights	Socks Required Tights should be worn under skirts, skorts, or dresses during cold weather. Tights and stockings must be solid black or white.
Shoes	Must be fully enclosed, no high- heels, or boots
Cold Weather Gear &Hats	May be worn outside only, not inside
Jewelry	No body piercing allowed (only earrings)

	All jewelry must be safe and not present a distraction
Hair	Neat and well groomed. No artificial hair colors that would be considered "extreme" & outside the norm. Hair is to be out of face at all times.



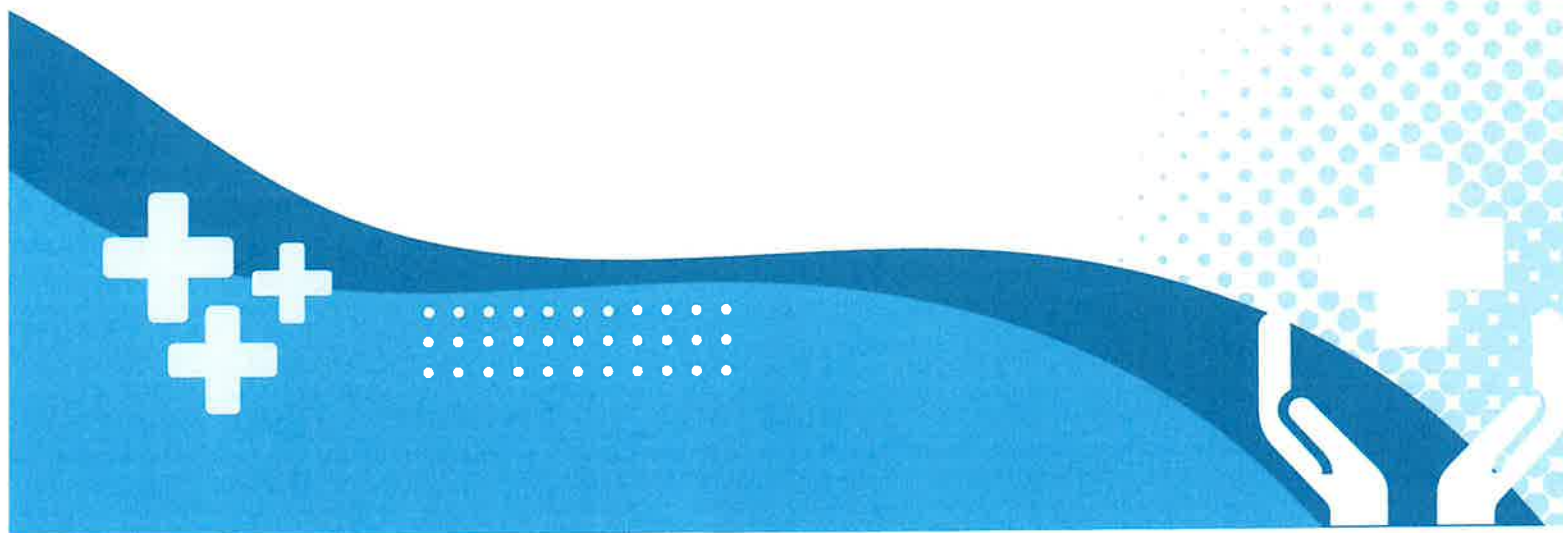
HEALTH

Dear parents,

As we prioritize the well-being and safety of all our students and staff, we kindly remind you of our sick policy.

If your child exhibits any symptoms such as fever, cough, runny nose, sore throat, vomiting, diarrhea, etc, we request that you do not bring them to school. It is essential to keep our learning environment healthy for all children and staff members.

If your child becomes unwell during the school day, we will contact you to pick them up as quickly as possible. For the benefit of all, your child may return to school after being symptom-free for 24 hours. This is a precautionary measure we take to help ensure that they have recovered and are no longer contagious





St. John's Lutheran School

ILLNESS POLICY

We at St. John's are honored that you have chosen us for your child's educational and developmental needs. When they are here, we take our responsibility to keep the children in our care safe and healthy very seriously. St. John's closely monitors our students in attendance to assure that they are aware and able to participate in daily activities. Together, we can prevent illness by teaching children's healthy habits and keeping them home while they are ill.

In accordance with the Oklahoma Department of Health and the Department of Human Services, children will be excluded from school with the following signs and/or symptoms, unless a written Return Authorization from a licensed physician states a child does not require exclusion.

- ▶ Fever, defined as 100.3 degrees or higher.
- ▶ Severe pain or discomfort particularly in joints, abdomen, or ears
- ▶ Vomiting and/or diarrhea
- ▶ Persistent, severe coughing
- ▶ A sore throat with a fever and/or swollen glands
- ▶ Jaundice (yellow) skin or eyes
- ▶ Eye discharge, defined as thick mucus or pus draining from the eye.
- ▶ Undiagnosed skin patches/lesions or severe itching of the body and/or scalp
- ▶ Difficult or rapid breathing
- ▶ Undiagnosed body rash or body parasites
- ▶ Swollen joints visibly enlarged lymph nodes, or stiff neck.
- ▶ Blood/pus from ears, skin, urine, stool
- ▶ Unusual appetite, or confusion
- ▶ Symptoms of chicken pox, impetigo, lice, scabies, measles, pink eye, or strep throat

- ▶ Signs or symptoms of possible illness such as lethargy, irritability, persistent crying, or any other unusual signs until a medical evaluation allows inclusion.

St. John's is a licensed facility for childcare and is not equipped to care for ill children. We understand that missing work can be difficult and an inconvenience, it is vital that sick children stay home. If a child is sick when they arrive, we will not be able to accept them into our care. If a child becomes sick during the day, a parent will be advised immediately and asked to pick their child up.

Children who are sent home due to illness may not attend the following day. Signs of the child's illness must be gone for 24 hours before they can return. The only exception will be if a doctor has seen the child and has indicated in writing that the child does not represent a health threat. In the event that we are notified of a confirmed communicable disease exposure or infestation, we will post a notice on our front door and send a message out via Remind.

The following information is to be used as a general guideline when determining if your child should be excluded from care.

ILLNESS	CAN MY CHILD COME TO SCHOOL?
Fever - any fever above 100.3 degrees	Must stay home until fever has been gone for 24 hours without the use of fever-reducing medications.
Pink Eye	Must stay home and be on doctor prescribed medication for 24 hours before returning. There must be no eye discharge.
Diarrhea and/or vomiting	Must be symptom free for 24 hours without the use of symptom masking- medication.
Strep Throat	Must stay home and be on doctor prescribed antibiotics for at least 24 hours.
Hand, Foot and Mouth	Must stay home until all blisters have scabbed over. Can not return if blisters or sores are present in mouth or if rash/blisters are spreading. (Typically, 2-3 days)
Cold- CLEAR runny nose without any other signs of illness	As long as child is comfortable, able to participate in all activities with no exclusions and feels like attending school, they may come.
Flu (body aches, fever, vomiting, diarrhea, chills, etc.)	Child must stay home for at least 24 hours after all symptoms have stopped. Must have physician Return Authorization to return. to school.

Discolored discharge from nose	Must stay home for at least 24 hours after receiving doctor prescribed medication. May return sooner if physician signs.
Croup	Return Authorization stating that child poses no risk to others.
Lice	Must stay home until a physician provides a Return Authorization. Must stay home until all louse and nits are completely gone. May require a release from a certified professional stating child has been checked out and is louse and nit free.
Other rashes, blisters, etc.	Contact your physician for proper diagnosis. Child will not be permitted to return to school without a physicians Return Authorization stating the rash, blisters, etc. are not contagious. Never send your child to school with an unidentified rash.

The PALS origination here at St. John's Lutheran School is here to support the wonderful teachers and staff that spend so much of their time educating our children. We also handle events that raise money to help benefit the school.

In the past, PALS funds have purchased supplies for the teachers, a school van, the LED sign along the road, and completed work on the HVAC system.

We need our parents' support to make all this happen!

PALS only meet *1 day a month for about an hour*. We do multiple fundraisers throughout the year and a PALS Snack Day on the last Friday of every month. Please fill out our Getting to Know You page and return to the Front Office to sign up for our monthly newsletter and receive fundraiser and meeting information!

For more information, please contact our Front Office @ 405-794-8686.



Parents And Lutheran Schools

23 / 24 CALENDAR

JULY

S	M	T	W	T	F	S
						1
2	3	4	5	6	7	8
9	10	11	12	13	14	15
16	17	18	19	20	21	22
23	24	25	26	27	28	29
30	31					

AUGUST

S	M	T	W	T	F	S
		1	2	3	4	5
6	7	8	9	10	11	12
13	14	15	16	17	18	19
20	21	22	23	24	25	26
27	28	29	30	31		

SEPTEMBER

S	M	T	W	T	F	S
					1	2
3	4	5	6	7	8	9
10	11	12	13	14	15	16
17	18	19	20	21	22	23
24	25	26	27	28	29	30

OCTOBER

S	M	T	W	T	F	S
1	2	3	4	5	6	7
8	9	10	11	12	13	14
15	16	17	18	19	20	21
22	23	24	25	26	27	28
29	30	31				

NOVEMBER

S	M	T	W	T	F	S
			1	2	3	4
5	6	7	8	9	10	11
12	13	14	15	16	17	18
19	20	21	22	23	24	25
26	27	28	29	30		

DECEMBER

S	M	T	W	T	F	S
					1	2
3	4	5	6	7	8	9
10	11	12	13	14	15	16
17	18	19	20	21	22	23
24	25	26	27	28	29	30
31						

JANUARY

S	M	T	W	T	F	S
	1	2	3	4	5	6
7	8	9	10	11	12	13
14	15	16	17	18	19	20
21	22	23	24	25	26	27
28	29	30	31			

FEBRUARY

S	M	T	W	T	F	S
				1	2	3
4	5	6	7	8	9	10
11	12	13	14	15	16	17
18	19	20	21	22	23	24
25	26	27	28	29		

MARCH

S	M	T	W	T	F	S
					1	2
3	4	5	6	7	8	9
10	11	12	13	14	15	16
17	18	19	20	21	22	23
24	25	26	27	28	29	30
31						

APRIL

S	M	T	W	T	F	S
	1	2	3	4	5	6
7	8	9	10	11	12	13
14	15	16	17	18	19	20
21	22	23	24	25	26	27
28	29	30				

MAY

S	M	T	W	T	F	S
			1	2	3	4
5	6	7	8	9	10	11
12	13	14	15	16	17	18
19	20	21	22	23	24	25
26	27	28	29	30	31	


JUNE

S	M	T	W	T	F	S
						1
2	3	4	5	6	7	8
9	10	11	12	13	14	15
16	17	18	19	20	21	22
23	24	25	26	27	28	29
30						

© World of Printables

Aug 9th – 30th School T-shirt Sale  Aug 21st – Sept 13th Worlds Finest Chocolate Sale  Nov 3rd Bookfair Walk thru 

Nov 6th – 10th Bookfair  Dec 11th – 15th Christmas Store  Jan 16th – Feb 2nd Popcorn Sale 

Jan 29th – Feb 9th Valentine Grams  Feb 14th Valentine Delivery  Apr 5th Bookfair Walk Thru 

Apr 8th – 12th – Bookfair and TAW (Teacher Appreciation Week) Penny War.  

Snack Days Every Other Friday 

PALS Meeting Second Thursday @ 6pm 