

List of Material

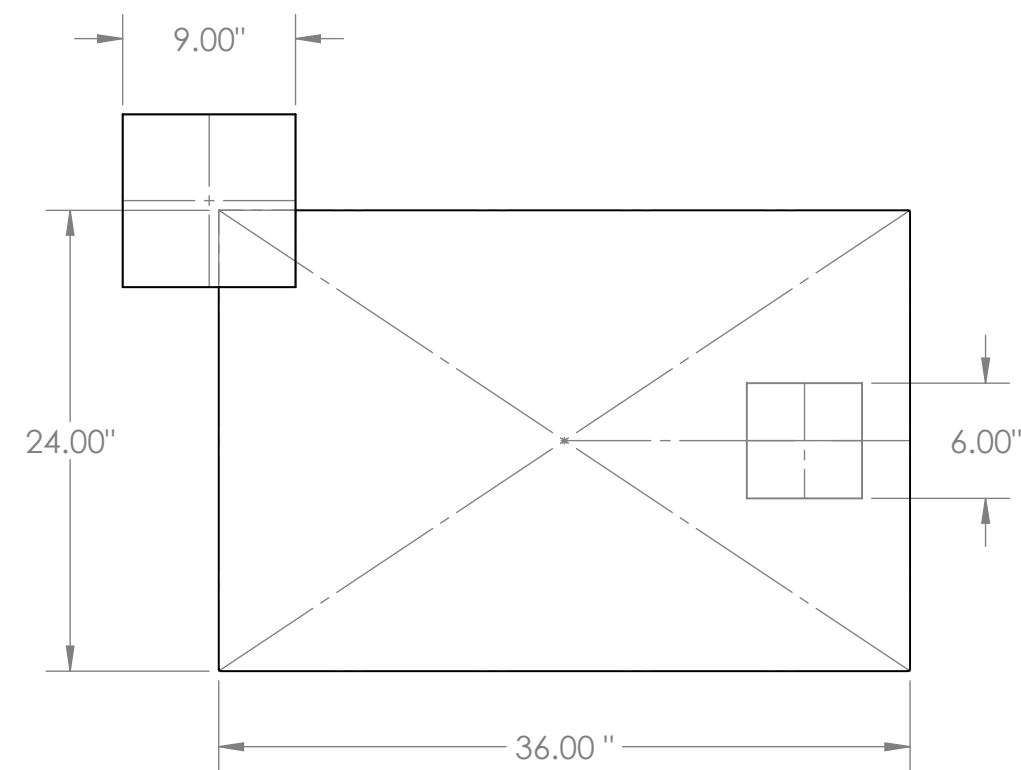
PART	NO.	Function	DIMENSIONS IN INCHES thickness x width x length		
A	1	big column side	1/2"	9"	26"
B	2	big top	1/2"	9"	9"
C	3	small column side	1/2"	6"	5 1/4"
D	4	top	1/2"	6"	6"
E	5	column side	1/2"	6"	11 1/4"
F	6	table	1/2"	24"	36"
G	7	dowels	3/8"	3/8"	2"

All sides, columns and bottom table are made out of baltic birch plywood. Meanwhile the top table top is clear plexiglass.

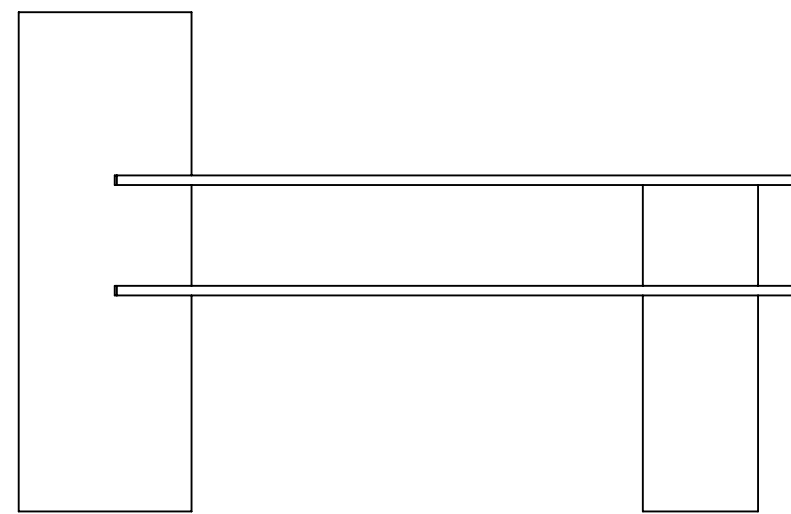
Place to obtain materials

- Prince Lumber: (one sheet of 5x5 of baltic birch plywood)
- Amazon: 2x3ft (24in x 36in) one sheet of plexiglass/acrylic
- Home Depot: oil finish, sand paper, and 3/8in dowels

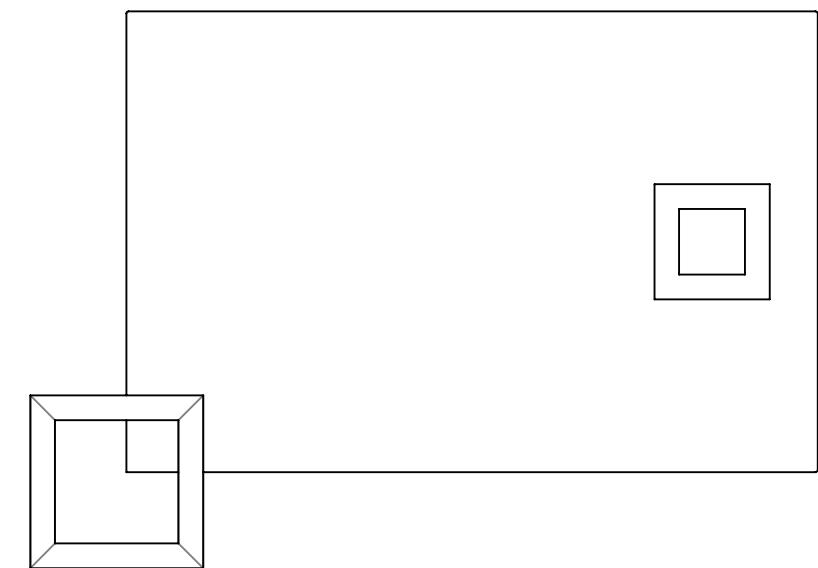
Top View



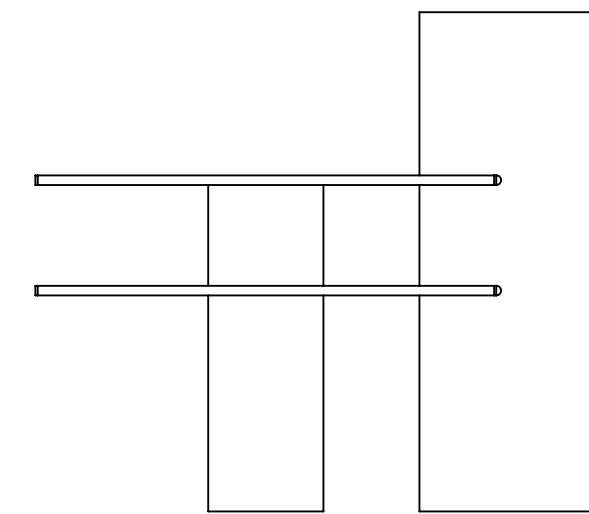
Front View



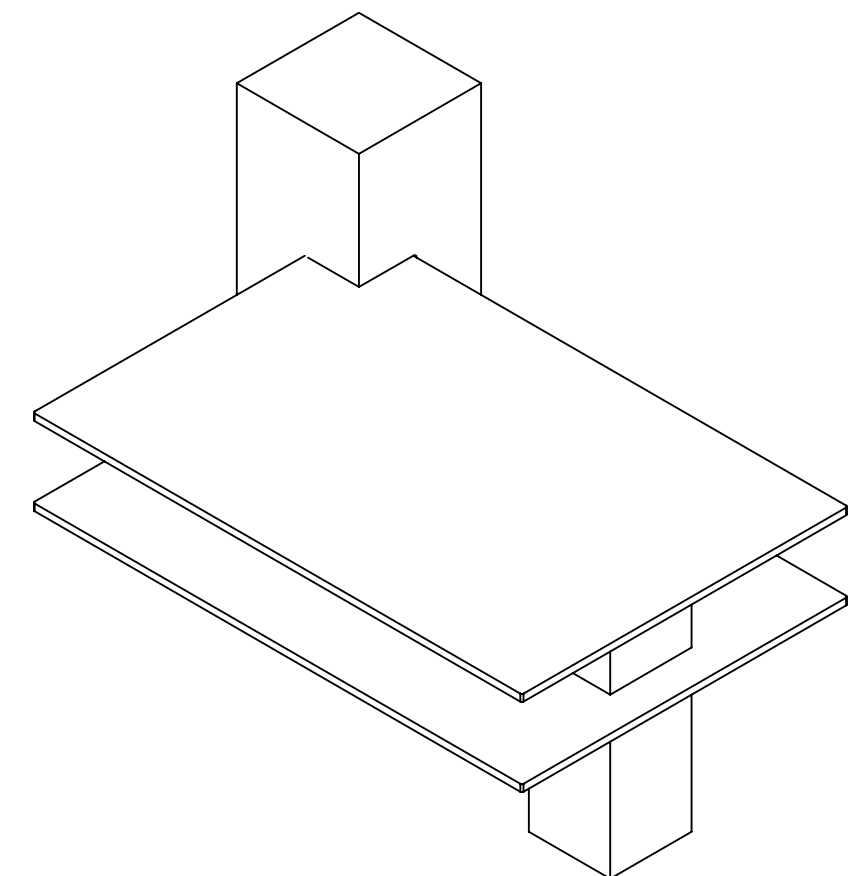
Bottom View



Side View



Isometric View



Rendered View

