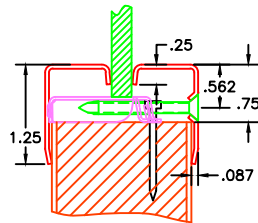


# Frame Reference Guide

All models included in this guide are Fire-Rated & UL listed. MAX pocket based on 1.75" door.

(Also located on page 25 of our online catalog)

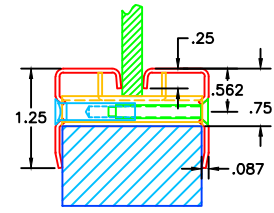
Best selling model, easy installation.



**110**

Cutout=Order+1.5"  
Glass=Order+.75"  
Max pocket 1.125

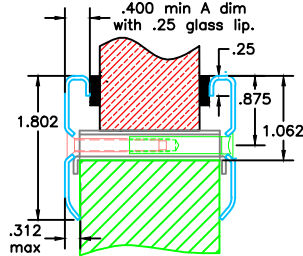
Through bolt design allows for custom applications.



**110B**

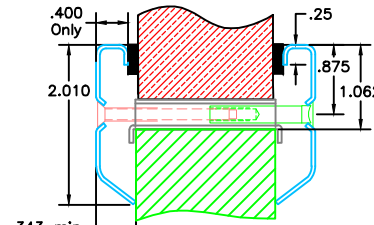
Cutout=Order+1.5"  
Glass=Order+.75"  
Max pocket 1.125

Best options for progressively thicker glass.



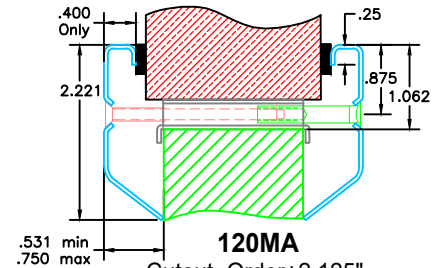
**118MD**

Cutout=Order+2.125"  
Glass=Order+1.312"  
Max pocket 1.575



**120M**

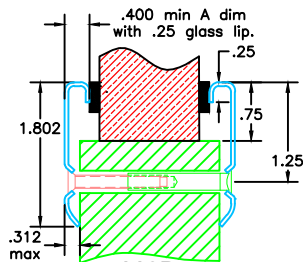
Cutout=Order+2.125"  
Glass=Order+1.312"  
Min 1.625 Max 1.95 pocket



**120MA**

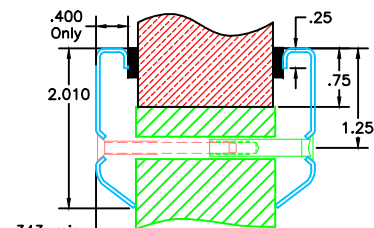
Cutout=Order+2.125"  
Glass=Order+1.312"  
Min 2.0 Max 2.45 pocket

These models can be lined with lead. Provide min .312 standoff.



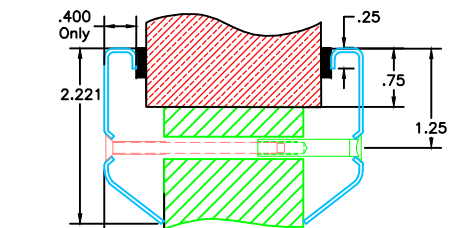
**118D**

Cutout=Order+1.5"  
Glass=Order+1.375"  
Max pocket 1.575  
Use .312 standoff with lead.



**120**

Cutout=Order+1.5"  
Glass=Order+1.375"  
Min 1.625 Max 1.95 pocket

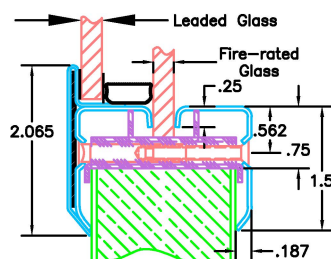


**120A**

Cutout=Order+1.5"  
Glass=Order+1.375"  
Min 2.0 Max 2.45 pocket

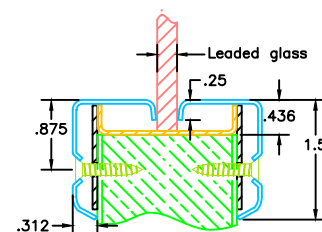
Best choice for fire-rated glass in leaded, X-ray doors.

Best value for single pane glass in leaded, X-ray doors.



**115-L1**

Cutout=Order+1.625"  
Center Glass=Order+.75"  
Leaded glass=Order-.187"



**115-L3**

Cutout=Order+.875"  
Glass=Order+.75"  
Staggered screw holes.  
Lead blank is 1.125  
Max pocket with support 1.4375