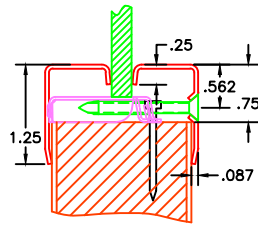
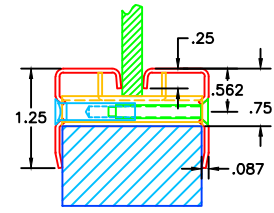


Best selling model, easy installation.



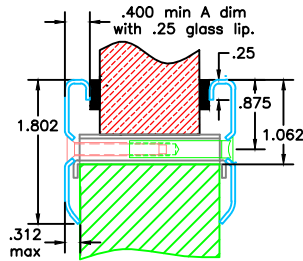
110
 Cutout=Order+1.5"
 Glass=Order+.75"
 Max pocket 1.125

Through bolt design allows for custom applications.

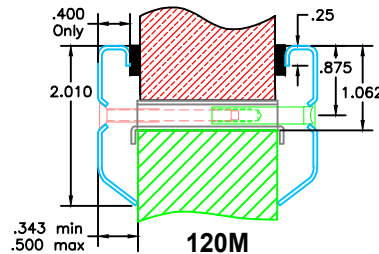


110B
 Cutout=Order+1.5"
 Glass=Order+.75"
 Max pocket 1.125

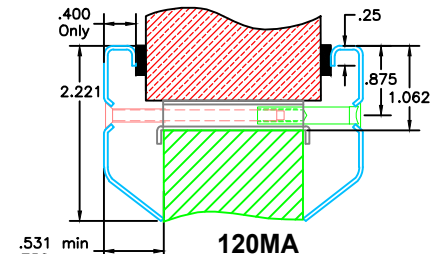
Best options for progressively thicker glass.



118MD
 Cutout=Order+2.125"
 Glass=Order+1.312"
 Max pocket 1.575

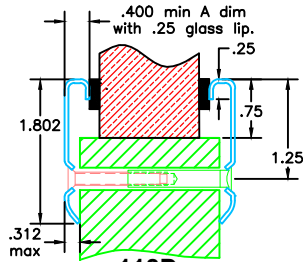


120M
 Cutout=Order+2.125"
 Glass=Order+1.312"
 Min 1.625 Max 1.95 pocket

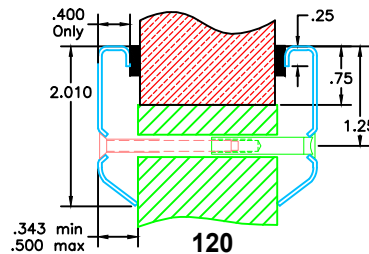


120MA
 Cutout=Order+2.125"
 Glass=Order+1.312"
 Min 2.0 Max 2.45 pocket

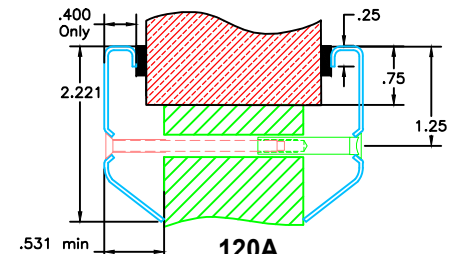
These models can be lined with lead. Provide min .312 standoff.



118D
 Cutout=Order+1.5"
 Glass=Order+1.375"
 Max pocket 1.575
 Use .312 standoff with lead.



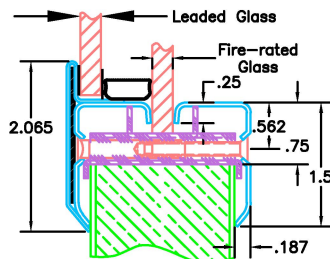
120
 Cutout=Order+1.5"
 Glass=Order+1.375"
 Min 1.625 Max 1.95 pocket



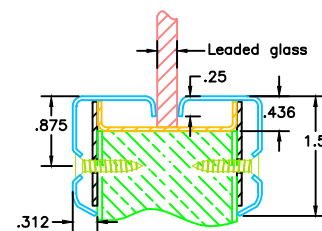
120A
 Cutout=Order+1.5"
 Glass=Order+1.375"
 Min 2.0 Max 2.45 pocket

Best choice for fire-rated glass in leaded, X-ray doors.

Best value for single pane glass in leaded, X-ray doors.



115-L1
 Cutout=Order+1.625"
 Center Glass=Order+.75"
 Leaded glass=Order-.187"



115-L3
 Cutout=Order+.875"
 Glass=Order+.75"
 Staggered screw holes.
 Lead blank is 1.125"
 Max pocket with support 1.4375"

