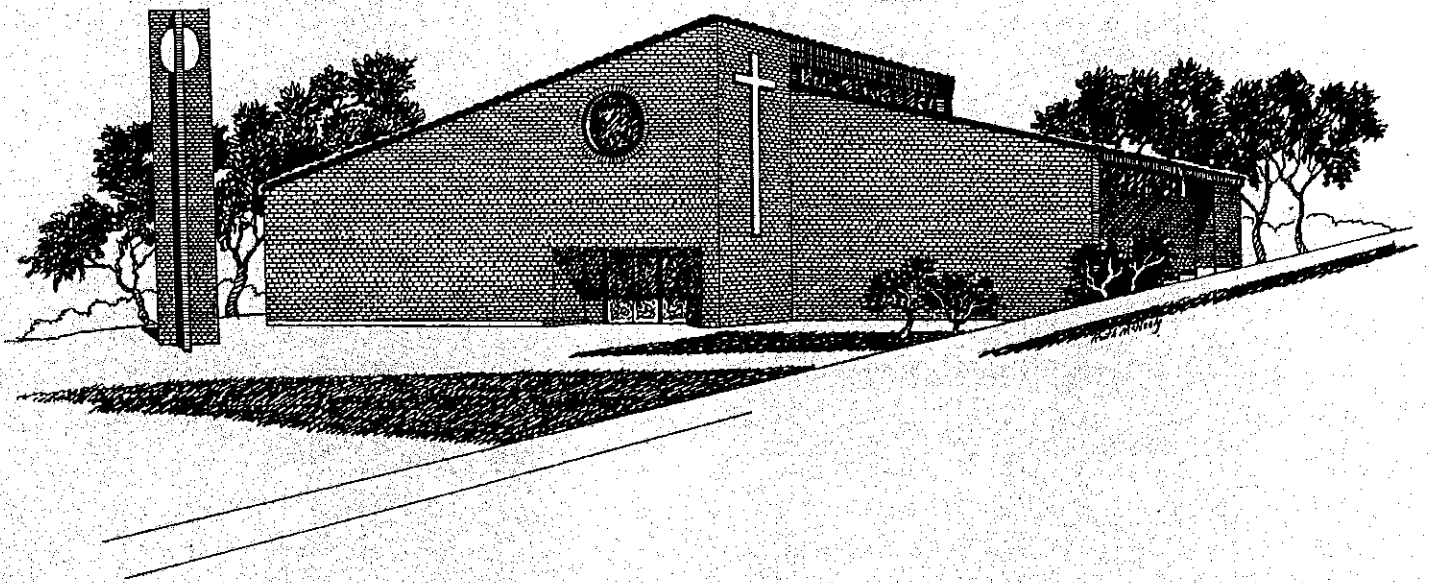


# The First 50 Years 1943 - 1993

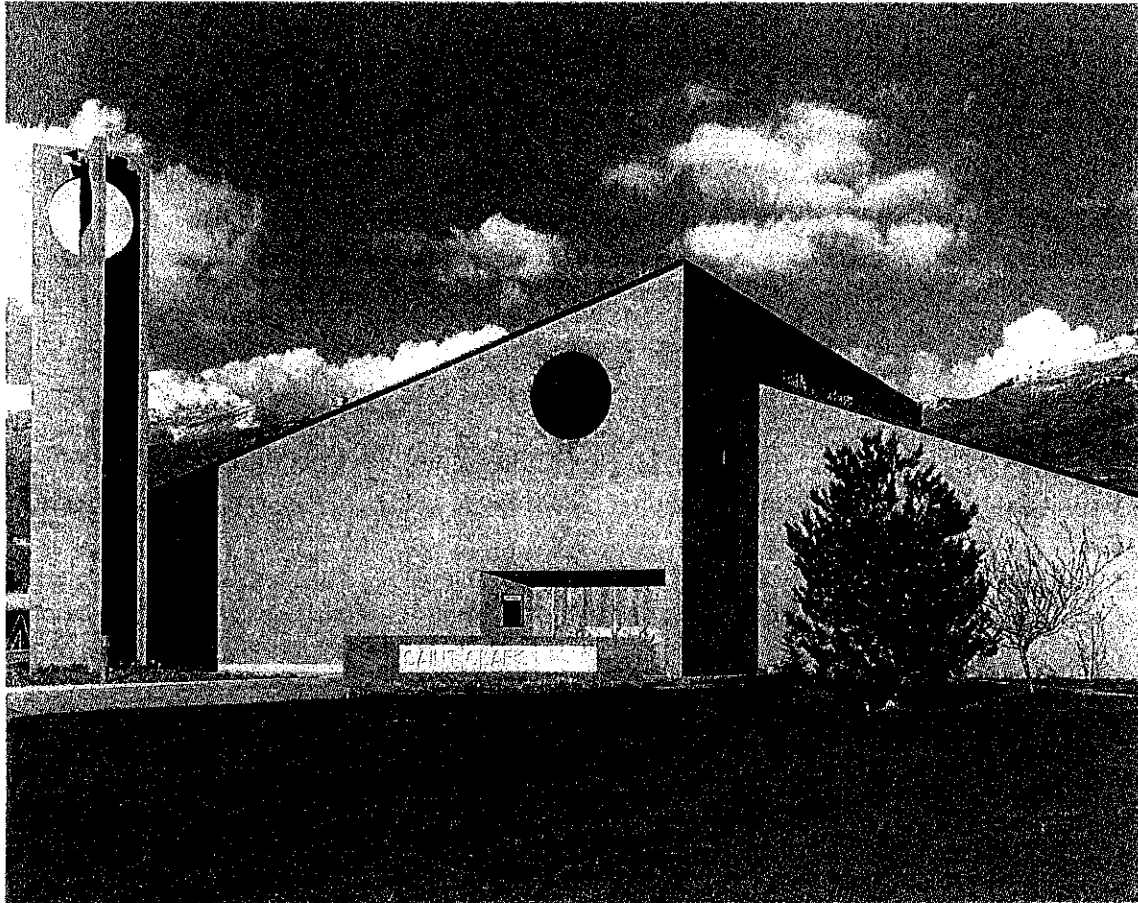


St. Olaf's Catholic Church  
Bountiful, Utah

**HISTORY OF  
ST. OLAF'S CATHOLIC CHURCH**

**Bountiful, Utah**

**1943-1993**



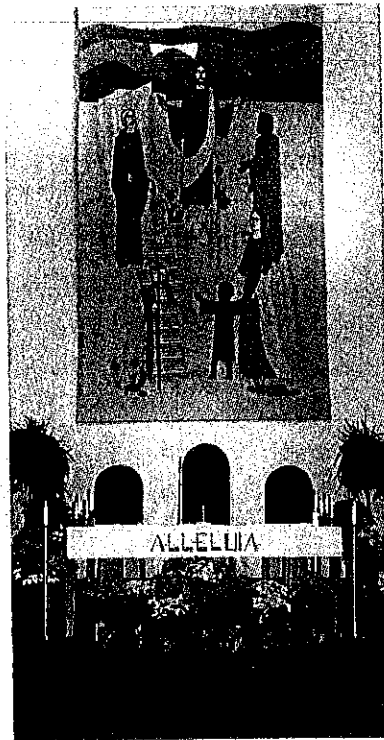
1793 South Orchard Drive, Bountiful, Utah 84010  
Rectory: 276 E. 1700 South Tel. 295-3621  
School: 1793 So. Orchard Dr. Tel. 295-5341  
Convent: 313 E. 1700 South Tel. 295-7474

Compiled By: George Van House  
Beth Murnin  
Rosemary McGregor  
Marilyn Larrabee  
Nola Smith  
Shirley Lemieux



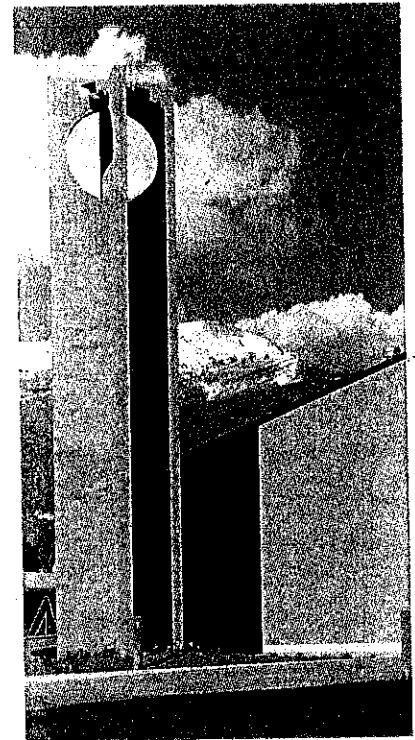
ST. OLAF

St. Olaf was the son of Harold Grenske, King of Norway. Olaf joined the Vikings and spent eight years in piracy before returning to Norway to become king in 1015 A.D. During his travels he was converted to Christianity. When he returned to Norway he brought with him a Catholic bishop and a number of priests and monks to spread the gospel. He tried to introduce Christianity by force and was eventually driven from the country. He died in battle in 1030. Because of the miracles reported at the River Nid, where he died, he was venerated as a martyr and saint. He is the patron saint of Norway.



THE TAPESTRY

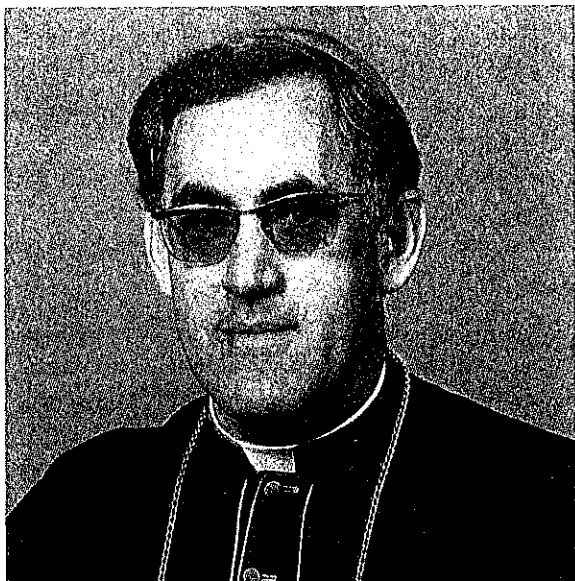
The tapestry behind the altar is a creation of the Art Studio Slabbinck of Brugge, Belgium. It is supposed to be symbolic of the Sermon on the Mount. The large Christ figure is speaking to the lame, non-white, and the family groups. It endeavors to convey the message that Jesus Christ, our Savior, came for the salvation of all people. St. Olaf's church may be seen in front of the mountains. Because of its position in the foothills, the message of Christ from the mountains is supposed to have special significance.



THE BELL TOWER

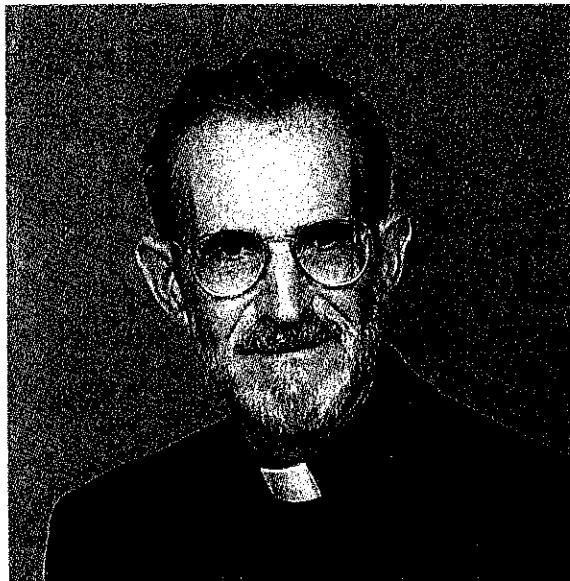
The brick campanile, or bell tower, on the left front of the church was constructed by George Ortega and Rod McLean, with the help of their families. They donated all of the labor. It is a free-standing, reinforced brick tower with four vertical wings at right angles on a reinforced concrete base. Each wing is three feet wide and eight inches thick. The total height is over fifty feet and the structure includes more than 5,000 bricks. The sound of the bells comes from an electronic Quadrabells tape-playing carillon with four large speakers. It can play a number of selections, including the Angelus and the mass calls. The open circles around the speakers signify unity, a theme carried forward into the church.

BISHOP OF SALT LAKE



Most Rev. William Weigand  
Nov. 17, 1980

PASTOR

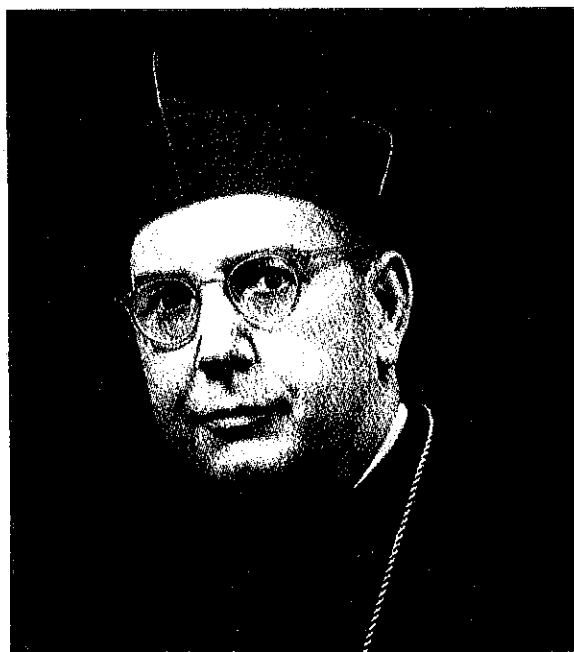


Rev. Rudolph Daz  
July 18, 1987

FORMER BISHOPS

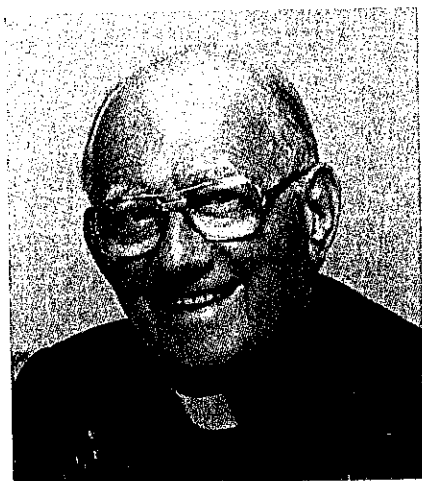


Most Rev. Duane G. Hunt  
1937-1960  
Deceased



Most Rev. Joseph Lennox Federal  
1960-1980  
Retired

FORMER PASTORS



Rev. John Mitchell C.S.P.  
May 26, 1943-  
Aug. 9, 1946



Rev. James F. McLean C.S.P.  
Aug. 10, 1946-  
Sept. 1, 1949



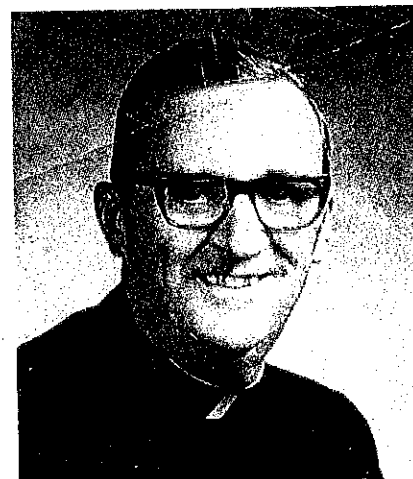
Rev. James T. Kenny  
Sept. 1, 1949  
Nov. 12, 1954



Rev.\* John J. Sullivan  
Nov. 12, 1954-  
Sept. 1, 1955

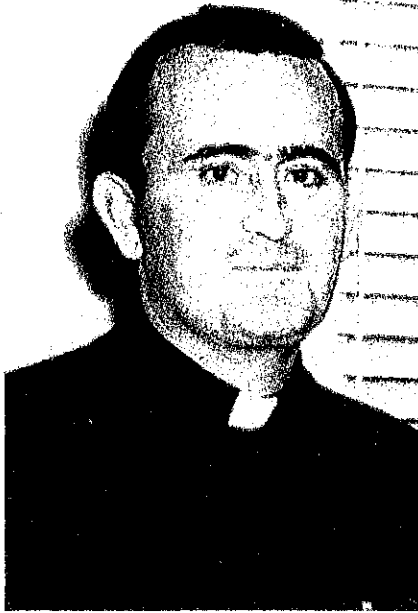


Rev.\* Robert C. Pollock  
Sept. 1, 1955-  
Jan. 15, 1969



Rev. Lawrence Spellman  
Jan. 15, 1969-  
Aug. 9, 1970

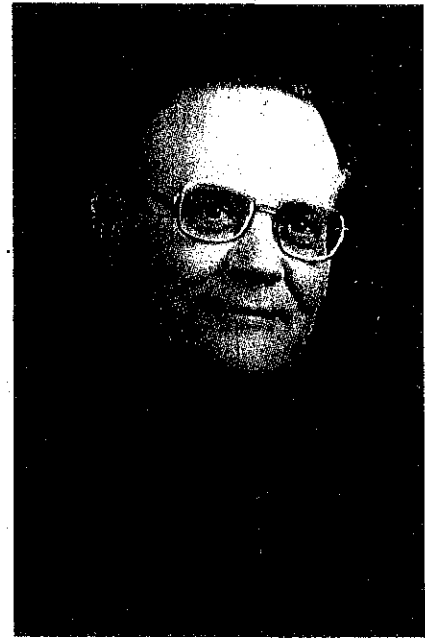
\* Now Monsignor.



Rev. Patrick Curran  
Aug. 9, 1970-  
Aug. 28, 1974



Rev. David C. Goddard  
Aug. 28, 1974-  
Sept. 1976



Rev. Thomas L. McNamara OSFS  
Oct. 22, 1976-  
Aug. 5, 1985

Assistants:

- Rev. Robert McFarland\* CSP, 1944-47
- Rev. Francis Keyes\* (Jelinek) CSP, 1943-45
- Rev. Vincent Sampietro CSP, 1945-47
- Rev. John Reynolds CSP, 1947-48

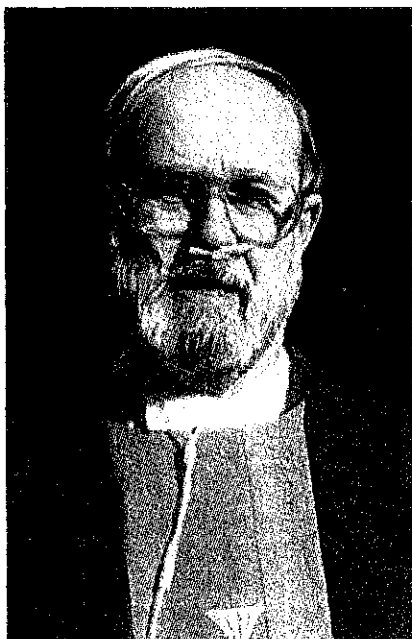
\* Deceased

Deacons:

- Ms. Chas. O'Connell  
Dec. 26, 1976-July 30, 1979
- Mr. Douglas Sliger  
1981 and 1986-87.
- Mr. (now Fr.) Ken McKenna  
1984-85
- Mr. Robert Glodowski  
Jan. 1, 1982 - present

Vocation:

- Sister Mary Jane Baker, D.C., 1973



Rev. Wm. Mobley  
Aug. 5, 1985-  
July 28, 1987

## FOREWORD

St. Olaf's parish is 50 years old! Whether we have been here five years or 50 years, it is an integral part of our lives -- Sunday Masses, weddings, baptisms, funerals, devotions, social and sports activities, and friendships -- our pathway to God's grace. We need to record its history while some of those who made it are still around to tell it and while most of the records are still available.

It is not just a story of dates and statistics, tenure of pastors, and brick and mortar construction. It is the story of many hundreds of parishioners who have served their God and their parish with faith and dedication. It is not possible to mention all of those who have left their mark. Many have come -- and gone again -- or are now deceased. Others have been too modest to respond to our pleas for information. We must apologize in advance for our sins of omission or for any errors which might have crept in, but we hope we have been successful in at least sketching an outline of our first fifty years of Christian service.



## The Paulists

For nearly 100 years after the area was first settled by the Mormon pioneers, there were no Catholic churches between Salt Lake City and Ogden. The area was mostly rural. The few Catholics in south Davis County attended Mass at the Cathedral in Salt Lake City. Religious instruction was given both at the Cathedral and by visiting nuns.

The onset of World War II precipitated extensive building of military facilities in the northern part of the county, including Hill Air Force Base, the Clearfield Naval Supply Depot, and the expansion of the Ogden Arsenal. Beginning on March 15, 1942, masses were said at the Clearfield mortuary. On May 10, Fr. (now Msgr.) Mark O. Benvegna was assigned as temporary Catholic chaplain at Hill AFB prior to establishment of an on-base chaplaincy on August 21. The first base inter-denominational chapel was ready for occupancy by September 20 and was dedicated by Bishop Duane G. Hunt on Nov. 1, 1942. (This chapel is now part of the Air Force Museum at Hill AFB.)

In the meantime, Bishop Hunt invited the Paulist Fathers, who had been conducting trailer missions in the Uintah Basin since 1938, to move their operations to Bountiful. They arrived early in 1943.

St. Olaf's Parish was established on May 26, 1943, as a Paulist Mission to include the entire Davis County. The name of St. Olaf, Viking king and patron saint of Norway, was chosen by Bishop Hunt in recognition of the Scandinavian residents of Utah. Father John Mitchell, C.S.P., was the Paulist superior and pastor, assisted by Frs. Stephen McFarland and Francis C. Jelinek (Keyes). Their schedule was an extremely busy one. They held masses and instructions at various sites throughout the county, including the American Legion Hall in Bountiful, the Layton Town Hall, schools, and private homes. They also held trailer missions in various locations, as well as missions in the Salt Lake City area. They were assisted by the Missionary Sisters of Our Lady of Victory and a vigorous lay apostolate spearheaded by the Senior and Junior Legions of Mary.



Paulist Trailer Chapel

Fr. Frances C. Keyes, CSP  
Deceased Apr. 1, 1970

Fr. John Mitchell, CSP  
Superior

Fr. Stephen J. McFarland, CSP  
Deceased Nov. 21, 1964



St. Olaf's Church 1944-1960

Early in 1944, a small brick bungalow at 55 East First North Street in Bountiful was purchased and converted into a church, seating 45 persons, with cramped living quarters for the three priests.\* It was dedicated on October 22 by Bishop Hunt, assisted by the Rt. Rev. Joseph P. Moreton as Master of Ceremonies. Music was furnished by the men's quartet of the Cathedral Choir from Salt Lake City under direction of Mrs. Margaret Sullivan, with Mrs. B.W. Hanson at the organ. An overflow crowd of 300 attended the evening banquet. The principal address was given by the Very Rev. Robert J. Dwyer, then Superintendent of Judge Memorial School (later Bishop of Reno and Archbishop of Portland). At that time, six Masses were being said on Sunday, one in Bountiful and others in Layton, Hill Field, Anchorage, Arsenal Villa, and the Naval Supply Depot. Christmas Midnight Mass that year was held in the Stoker School in Bountiful.

Fr. Vincent J. Sampietro, newly ordained, replaced Fr. Keyes in May of 1945.\*\* Father James F. McLean replaced Father Mitchell as the superior in August, 1946. In June of 1947, Fr. McFarland was replaced by Fr. John Reynolds. An Altar Society was organized with Mrs. Wm. G. Schultz as president.

After the conclusion of the war, the Paulist Fathers decided to build a permanent church and mission home. Layton was chosen as their site. Fr. Mclean, "the priest with a union card", who had been a carpenter before his ordination, became the contractor, supervisor, and chief laborer. The first mass in the new St. Rose of Lima church was said on Jan. 11, 1948, with formal dedication on April 11. Upon completion of the rectory on Sept. 29 the Paulists moved to Layton, but continued to serve St. Olaf's also.

---

\* Former tenants in the house included newlyweds Calvin Rampton, later three-term governor of Utah, and LucyBeth. The house was torn down in 1992 to enlarge a car lot.

\*\* Fr. Sampietro returned to Bountiful 45 years later to replace Fr. Daz for three weeks in the summer of 1992.

## The Early Parish Years

On Sept. 1, 1949, the parish was divided and St. Olaf's was re-established as a separate parish, including all of Davis county south of 41 degrees latitude (the Farmington Y). Fr. James F. Kenny, an instructor at Judge Memorial School was given the dual assignment as pastor. He was also transporting five children to Judge in his car. On Jan. 1, 1954, Fr. Kenny became Diocesan Superintendent of Schools and director of scouting, in addition to his pastorate. The little church was remodelled to seat 80. 160 persons were attending three masses but as many as 125 were crammed in at times. On Nov. 12, 1954, Fr. (now Msgr.) John J. Sullivan replaced Fr. Kenny as pastor.

On Jan. 2, 1955, a parish letter was sent out listing total receipts in 1954 of \$10,480.53, Expenses \$9483.99, Debt \$2200, expected contributions \$1 per Sunday and \$5 at Easter and Christmas. On Jan. 3, the Altar Society was reorganized with Mrs. Robert (Melva) Williams as president. On March 29, a Men's Club was organized with Mr. Robert (Bob) Williams as president.

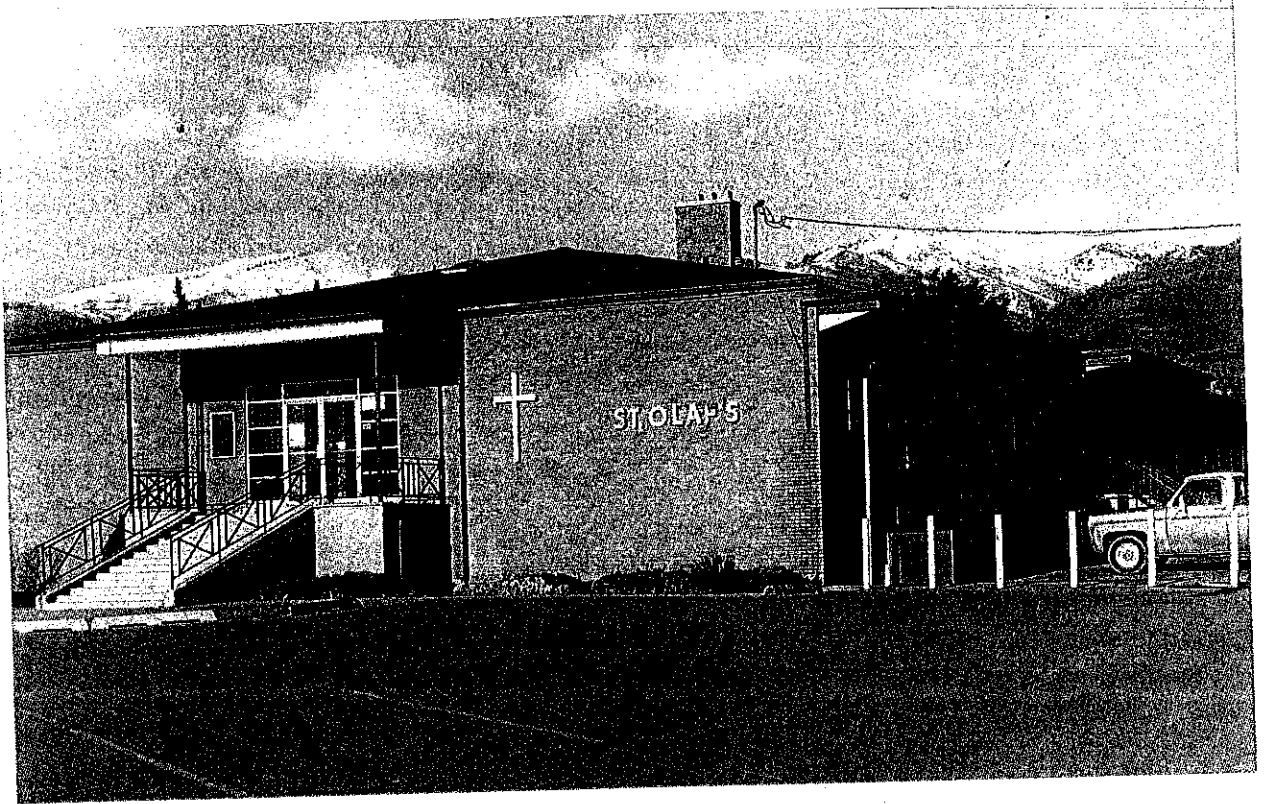
On March 20, 1955, Fr. Sullivan purchased an old, red brick house with five acres of land at 1795 Orchard Drive for a future church and school at a cost of \$16,950.

On Sept. 1, 1955, Fr. (now Msgr.) Robert C. Pollock, editor of the Intermountain Catholic Register, was assigned as pastor, replacing Fr. Sullivan.

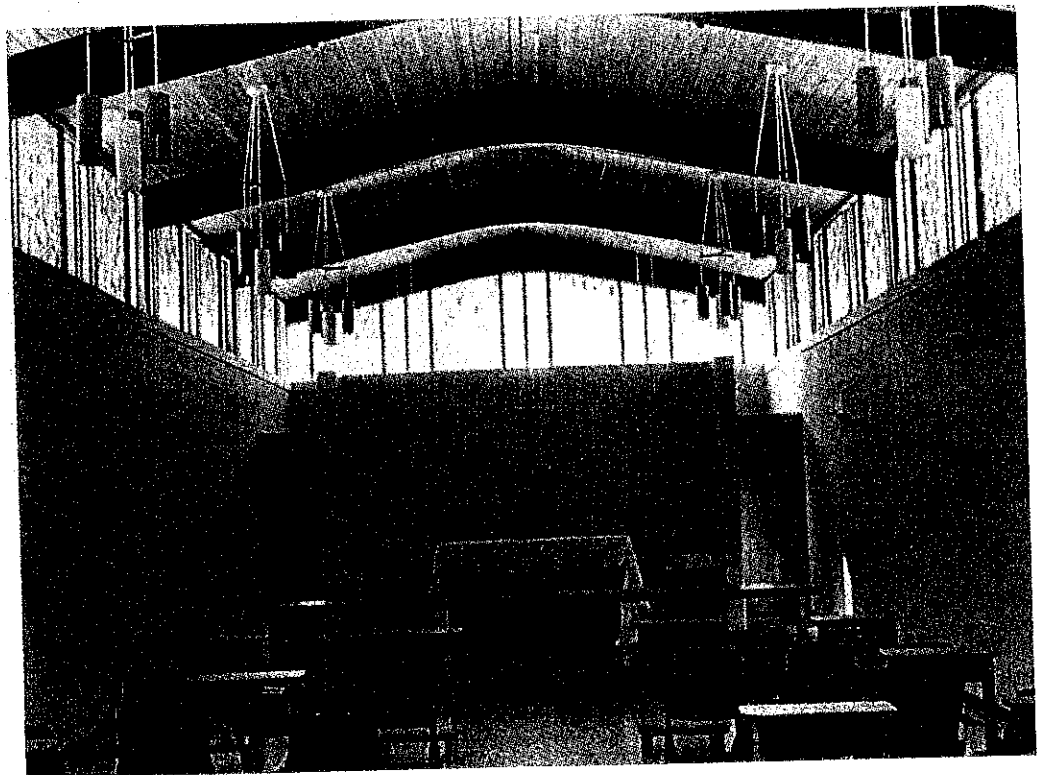
## The School/Church

In 1956, Fr. Pollock obtained permission from the Bishop to begin a search for sisters to staff a parochial school. There were 160 families in the parish. He believed that a school would attract new parishioners and a new church would soon follow. (The new school did attract a number of new parishioners with children, many of whom are still in the parish. However, it would be another 20 years before Diocesan permission would be obtained to build a permanent church.) A Building Committee was formed with Bob Williams as Chairman. Late in 1958, through Fr. Pollock's persistence and prayers, and the prayers of the congregation, a commitment was received from the Daughters of Charity. Ground was broken for the new building on March 14, 1959, by Bishop Hunt and it was completed in the fall. Fr. Pollock occupied quarters in the basement. Three classrooms were left unpartitioned for use as a "temporary" church, but no sisters were yet available to staff the school.





The first three sisters arrived for the start of school in Sept. 1960, staffing four grades, assisted by two lay teachers. Sister Theodora Nygren was the principal. A home at 276 E. 1700 South was converted into a convent. Two more sisters arrived the following year and the school expanded to six grades. A kindergarten was added the next year. In May, 1963, a second home adjacent to the convent on 1700 South was purchased, and a chapel was built to connect the two. In 1963-64, the school was expanded to its present eight grades. The first class of 17 students was graduated in May, 1964.



In early 1963 Bountiful City reported that its plans called for an extension of 1800 South Street east directly through the school parking lot. Father Pollock and a group of parishioners visited the city council. The city agreed to move the street to the south edge of the property, resulting in the present curve. An additional five acres of adjacent property was purchased at a cost of \$15,000. In 1967, 2 acres on the south edge was sold to the city for the street for \$13,241.10.

On April 1, 1964, a private home at 2186 So. Orchard Drive was rented as a rectory. In 1970 a home at 313 E. 1700 South was purchased for a rectory.

On Oct. 27, 1964, the St. Olaf's Council 5502 of the Knights of Columbus was organized, replacing the Men's Club. Ted Comins was elected Grand Knight, with Tom Brady as Deputy Grand Knight. The first election and initiation were held in early 1964, with 56 members (see page 25.)

In 1965 the statue of St. Olaf, which now stands in front of the school, was donated by the late Jim and Betty Shulsen. It was unveiled on Nov. 29.

In Nov., 1968, the first Harold's Night Party (now called St. Olaf's Entertainment Night) was held. Profit was \$1800.

On Jan. 15, 1969, Fr. Pollock was transferred to St. Therese's, Midvale, after serving St. Olaf's for 13 years, the longest tenure of any pastor. During that time the size of the parish doubled from 160 to 313 families. He was succeeded by Father Lawrence Spellen. 1969 revenue was \$83,611, expenses \$88,182. On Aug. 9, 1970, Fr. Spellen was succeeded by the Rev. Patrick Curran. Fr. David C. Goddard was assigned as pastor on Aug. 28, 1974. After his departure in Sept. 1976, Fr. Thomas L. McNamara, O.S.F.S., then Principal of Judge Memorial High School, was assigned. He served for nine years. On Dec. 26, 1976, Chas. O'Connell, the first lay deacon from St. Olaf's, was ordained.

## **The New Church**

At the start of 1978, the parish had 400 families. On Jan. 16, Fr. McNamara held a general parish meeting to discuss the need for expanding the portion of the school which had been used as a church for 18 years. The consensus of the parishioners was that the time had come to consider building a permanent church. A committee was formed to explore the possibility. Werner Ruemmele was the chairman.

A plan was developed to build a parish center, comprising a church to seat 550 people and a parish hall, all under one roof. Robert Brotherton, then a parishioner, was the architect. The plan was approved by consensus at the next annual meeting on Jan. 18, 1979. Bishop Joseph Lennox Federal presided over the ground breaking ceremony on July 8, 1979, and construction began in September. The basic structure was completed by professional builders in April, 1980. A parish volunteer program was begun to finish the interior, including sheet-rocking, painting, plumbing, electricity, etc. There was also always a kitchen crew to feed the hungry workers. Hundreds of people participated in this phase.

On July 29, 1980, barely a year after groundbreaking, the new church was dedicated on the 950th anniversary of the martyrdom of St. Olaf. Bishop Federal, now retired, was the principal celebrant, assisted by Fr. McNamara, and former pastors Fr. Pollock and Fr. Kenny, and former assistant, Fr. John E. Norman, as well as Fr. Francis K. Diskin and Fr. Gerald P. Lynch. Mr. Chas. O'Connell was the deacon. Robert Hipley acted as master of ceremonies and Robert Glodowski was the commentator.

Robert Glodowski was ordained as a deacon on June 6, 1981. After a six-month training period in another parish, he was assigned to St. Olaf's where he has served ever since. During the interim period, Deacon Doug Sliger was assigned to St. Olaf's. The parish now had 430 families.

### **The McNamara Center**

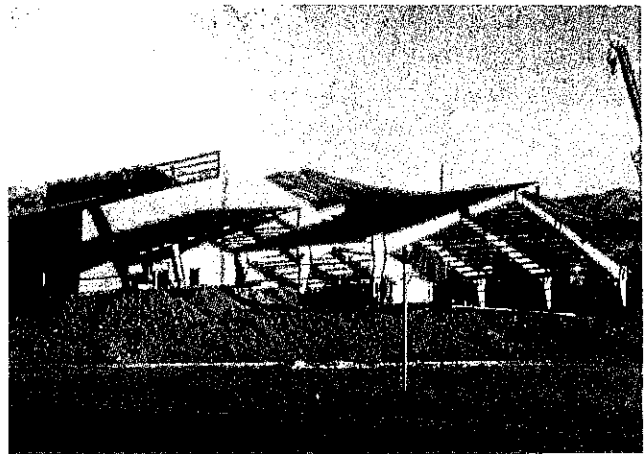
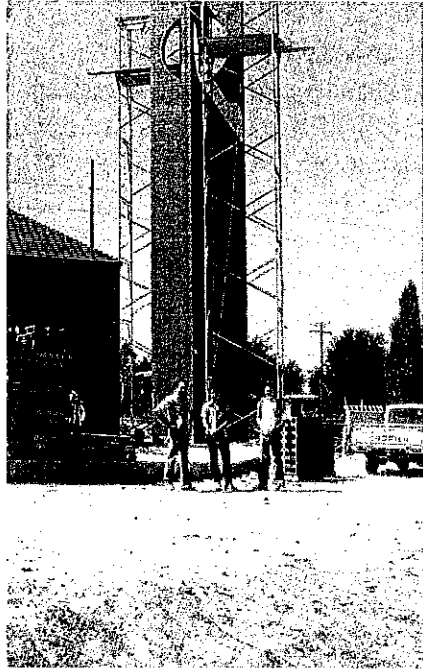
Initially, the interior of the parish hall was left unfinished because of a lack of funds. It could not be occupied until completed to meet Bountiful building code requirements. The annual parish meeting on Jan. 21, 1982, decided to complete it by finishing the basketball floor and by maximum use of volunteer labor on the interior work. Once again a crew, usually led by Richard Bennis, spent many Saturdays and other times putting up sheetrock, painting, wiring, etc., and, again, there was also always a kitchen crew on hand. The hall kitchen was later remodeled to improve the layout and equipment under the leadership of Art Hoffman, who was then Grand Knight of the Knights of Columbus.

1983 was an eventful year for St. Olaf's. The work on the parish hall continued. It was finally ready for its first event, the annual Ladies Luncheon on Oct. 15. In the meantime, the city experienced its famous floods, and St. Olaf's had one of its own on July 9. While a new roof was being put on the school, it was hit by a heavy rainstorm which damaged the interior. A 40th anniversary celebration was held on July 29. On Dec. 4, the parish hall was dedicated by Bishop William Weigand. At the request of the parishioners, and to Fr. McNamara's surprise, the hall was named the "McNamara Center" in recognition of his efforts in building the church and hall. The parish now had 500 families.

On Aug. 1, 1985, Fr. William Mobley was appointed as parish administrator, and Fr. McNamara returned to Judge Memorial High School as its president. Deacon Doug Sliger became parish administrator. Fr. Mobley resigned on Aug. 1, 1987, because of ill health, and moved to Mukilteo, Wash. Fr. Rudolph Daz, the present pastor, was appointed on July 28, 1987.

In April, 1989, the Pro Ecclesia et Pontifice Medal was awarded to Mel Williams and Wanda McDonough by Pope John Paul II for their many years of work with the Catholic Women's League and CCD. The awards were presented to them, and to other diocesan leaders by Bishop William V. Weigand at a special Mass at St. Joseph's in Ogden.

In the summer of 1991, the two remaining nuns moved into their community house in Salt Lake City. An extensive remodeling of the convent was accomplished, converting the two units into a rectory and parish offices. The following year the Daughters of Charity moved back to Bountiful to the former rectory.



## The Old Timers

The first Catholic family in the Bountiful area appears to be the Wm. Schultz family, who arrived from Omaha with one son, William, in 1917. Mr. Schultz was a master electrician with the Cudahy Packing Co. Five daughters: Catherine (Williams), Dorothy (Price), Helen (Sorenson), Marie (Pope) and Margaret (Fassell) were born here. Catherine, Dorothy and Helen are still parishioners.

Sam and Mary Bernardo, with 2 daughters, Florence and Eda, arrived in 1927. Joe and Rose Jacketta and children, Ann, Venice, Lindsay, Gary and Roger, arrived in 1932. Ann (Bushnell) and Linda (Swidnicki) are still in the parish. His parents, Guerno and Ann Jacketta joined them in 1944. Jane Lamph came in 1936. Chas. and Verona Calobeer and family arrived in 1939. Seth and Nora Williams moved here in 1940, followed by Bob and Mel Williams in 1942. Frank and Teresa Fratto and family arrived in 1944. They all attended Mass in Salt Lake City. In the early 40's, the missionary sisters from Salt Lake would pick up the children for catechism and summer instruction in the basement of the Cathedral.

The program for the dedication of the church on Oct. 22, 1944, listed committee members as Mr. J. Benoit, chairman; Miss Grace Lundberg (Brady), vice-chairman; Mr. and Mrs. Wayne Branagan, Mr. and Mrs. T.W. Monson, Mr. and Mrs. Wm. Schultz and daughters, Mrs. M. Fassell, Mrs. Frank Winslow, Mr. Frank Worsley, Mrs. N. Wilkins, Major F.J. Torney, Mr. and Mrs. Spigarelli, Mrs. Mary Bernardo, Mrs. R. Marty, Mrs. G.W. Lundberg, Mrs. Paul Kingston, Mary Wilkins, and Eda Bruno.

Other early arrivals included Mrs. Josephine Secrist, Martin and Sarah Costello, Mrs. Grace Evans, Frank and Mary Granato, Genevieve and Harriett White, Charles and Rose Parkin, Ernest and Rose Odekirk, and Ted Atha.

Early baptisms included Roger Jacketta, Tom Branagan, and James Williams. The first confirmations were administered by Bishop Hunt on June 11, 1944, and the first First Communion class was held by Father Mitchell on July 1, 1945.

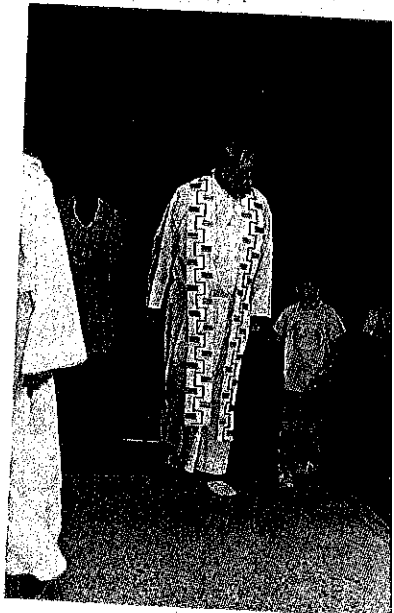
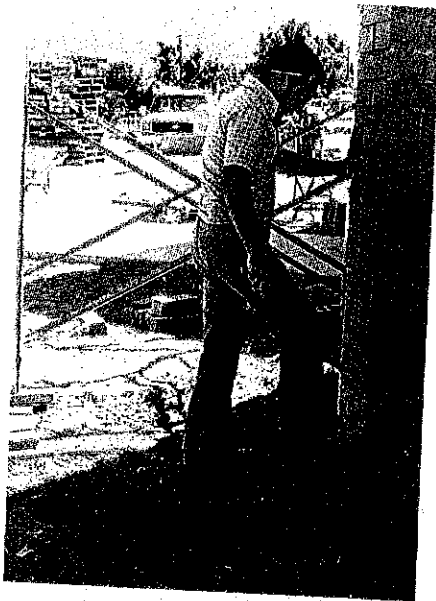
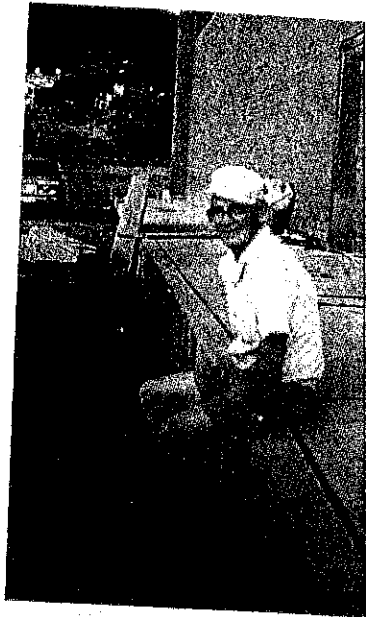
Other long-time parishioners and their arrival dates (children are listed only if they are still on the parish list):

Diane Fratto Chase, 1947	Wayne and June Callahan, 1951
Geo. and Mary Van House, 1947 (Layton until 1955)	Mrs. Maria Gotschall, 1951
Vincente Meyer Family, 1949	Ronald* and Alice Johnson, 1951
Pres and Gloria Garcia, 1949	Esther Marlette, 1952
Tony and Fluorine Cristaudo, 1949	Alex and Helen Zugel, 1952
David Cristaudo	Sylvia Zugel
Gordon* and Rosemary McGregor, 1950	Kathy Zugel Pickett
Kathleen McGregor Jones	Joe and Pauline Perry, 1952
Mary McGregor Newman	Nick* and Anne* Franks, 1953
Robert and Ann Hiller, 1950	Diane Franks Parkin
Pierce and Elisa Butler, 1951	Chas. and Catherine Korogi, 1953
Dan* and Wanda McDonough, 1951	Jess and Mary Huffstetler, 1954
	John and Beth Murnin, 1955

Marvin and Mary Ann Sparenberg, 1955  
 John and Katherine Perry, 1955  
 Neil and Rita Truelsen, 1956  
 Wm.\* and Jean Lyons, 1956  
     Donna Lyons Pollard  
 Dee and Beverly Murnin, 1957  
 Phil\* and Lucille Krek, 1957  
 Wallace and Eleanor Willhard, 1957  
 Ed and Jo Lusinski, 1957  
 Joe and Terry Merritt, 1957  
 Fred and Betty Backstrom, 1958  
 Rudy and Mary Fernandez, 1958  
 Al and Molly Cahill, 1958  
 Sadie Wentzel, 1958  
 Don and Nancy Graham, 1958  
 Marc Workman, 1958  
 Pamela Workman Poss, 1958  
 Wallace and Milene Bethel, 1959  
 Leon and Myrna Feolo, 1959  
 Louie and LaRae DeMarco, 1959  
 Wm.\* and Margaret Menghini, 1959  
 Tom and Michiko Bracken, 1960  
 Richard\* and Catherine Gourde, 1960  
     Richard Gourde, Jr.  
 Nick\* and Vivian Jelaca, 1960  
 Tubber and Mary Okuda, 1960  
 Albert and Carleen Perfili, 1960  
 Wm. and Eileen\* Robertson, 1960  
     Patrick Robertson  
     Gloria Robertson Fullmer  
     Debbie Robertson Vanderbur  
 Wm. and Mary Alice Marion, 1960  
 John\* and Lucille Piquette, 1960  
 James and Eileen Baker, 1960  
     Teresa Baker  
     Barbara Baker Schwab  
     Janice Baker Fulson  
     Susan Baker Stone  
     Margaret Baker McLaws

Mary Meader Bartlett, 1961  
 Chas. and JoAnne Dean, 1961  
     Margaret Dean Stireman  
     Mary Dean Boulton  
 Donald and Betty Pitchforth, 1961  
     Donald Pitchforth, Jr.  
 Michael and Shirley Lemieux, 1961  
 Robert and LaRae Auer, 1962  
 Ted and Mary Comins, 1962  
     Gary Comins  
 Al\* and Ida Simonsen, 1962  
     Linda Simonsen Crump  
 Dale and Nola Smith, 1962  
     Christine Smith Larrinaga  
     Roxane Smith Lammers  
 Robert and Jean Kelly, 1962  
 George and Raquel Ortega, 1962  
 John and Leona Lakman, 1963  
 Roger and Mary Lowe, 1963  
 Frank and Frances\* Welsh, 1963  
 Joe and Bea Trueba, 1963  
 Wm. and Margaret Cassun, 1964  
 Robert and Violet Barney, 1964  
 Clarence and Pauline Rockwell, 1964  
 Joseph\* and Anna\* Kinlen, 1964  
 Dennis and Barbara Banning, 1965  
 Dominic and Edith DiEsposti, 1965  
 Tom\* and Ruth McDonough, 1965  
 James and Shirley Formeller, 1965  
 Robert and Barbara Glodowski, 1965  
 Gina Brunatti, 1965  
 George and Lucille Amburn, 1966  
 Roy and Joan Howard, 1966  
 Roy\* and Rose Evans, 1966  
 James and Judy Vogel, 1966  
 Werner and Romana Ruemmele, 1967  
 Del and Mary Carbiener, 1968

\* Deceased.





## St. Olaf's Today

St. Olaf's now has about 525 families, with an annual budget for the church and school of \$650,000.

St. Olaf's has had 11 pastors over 50 years. At this time, all are still living. We hope they can all participate in our formal celebration in September, 1993.

## The People

Buildings and statistics may be the framework of a parish, the pastor its head, and the Mass and liturgy its life, but its people are its flesh and blood. Pastors come and go, but many of the parishioners have outlasted several of them or have lived out their lives here. St. Olaf's has been very fortunate to have a large number of loyal and dedicated parishioners to help carry on its many functions.

To mention a few of those who have served notably over the years is fraught with the danger - no, the certainty - that many others, equally deserving, will be overlooked. Many of these have served virtually anonymously. Nevertheless, we couldn't tell the story without mentioning a few, in addition to the references in various parts of this history:

One couple who have been with us the full 50 years, and who, in the early days, did everything from heading every parish organization to helping find a location for the new church and installing the carpeting are Bob and Mel Williams.

How could we fail to mention Bill and Margaret Menghini? Bill was a workhorse for parish maintenance projects and functions over the years, including a number of the St. Patrick's Day corned beef and cabbage dinners (and he an Italian yet!). Margaret handled the flowers and candles for years. And Sunday breakfast for the priests was a tradition, even after Margaret became totally disabled.

We would have to mention the "couple next door" to the rectory, Eileen and Bill Robertson, who helped the priests so much and chaired many activities and organizations over the years, as well as Roy and Rosie Evans' many activities, including his "annual" steak fry.

How about Shirley and Mike Lemieux? Shirley has given us that wonderful choir, and *no one* can coax the beautiful melodies from that organ like Shirley. Mike also has served in many capacities. How about the choir members who come to practice every Wednesday evening and are always there on special occasions? Particularly, there is Roger Lowe (nearly always the soloist at every wedding, funeral, or special occasion), as well as Neil Truelson, Marilyn Larrabee, Norma Petet, and others.

What about Tubber Okuda, another man of all tasks, who has been a chief financial advisor, among other things, for many years? Lou Sayre served in many activities, including editing the parish newsletter and chairing many parish and Knights of Columbus social activities and Mother's Day Breakfasts. Bill Marion was also a regular chef for parish dinners.

What about John Murnin, Joe Merritt, and John Perry, who have been faithful ushers for a number of years? There's Ted and Mary Comins. Ted still collects clothing for the homeless, even while caring for Mary. She brought eggs and bread to the parish from the monastery for years. Ted also organized the Knights of Columbus council. How about Bob Glodowski, who has been our faithful deacon for over 10 years? And Barbara was administrator of Mt. Calvary Cemetery for several years.

How about the liturgy committee who plan the music and liturgy we take for granted?. Mickey Adelhardt has been particularly active. Marilyn Larrabee has been very active in supporting St. Olaf's School with her services. Joan Gardner supervised the settlement of Vietnamese refugees and other immigrants. And there are the unsung ones who clean church regularly or those who work at the "soup kitchen" every four weeks?

How many of us know which CCD teachers always sacrifice a part of their Sundays for our youth? Or those who attempt to provide wholesome activity for the youth? The youth and sports programs, while not specifically spiritual, provide a sense of community for our young people.

Most of us who attend Mass regularly never stop to think how many people have been involved in routine functions to make the church services function smoothly each week. There are those who set up the schedules like Betty Byrne, Mickey Adelhardt, Marilyn Larrabee, and Jerrie Barrett. We have musicians at nearly every Mass. Each weekend requires 14 or 15 special ministers, plus those who take Communion to the sick. We have a lector at each mass and a crew of ushers. We can't even begin to count the number of altar servers over the years, even a couple of girls. And finally, we have a group of collection counters who wade through the mass of envelopes, checks, loose change, and children's envelopes each Sunday afternoon.

The list of those who serve and are serving is endless. Our parish has grown to the extent that none of us are aware of *all* those who serve. Most of those mentioned herein are, quite properly, those who have done it over the years. Now, however, a newer, younger group is taking their place. Like the older ones, they have never really expected any special recognition but are content to know they are contributing their time, talent, and treasure to the service of God and the Church.

## PARISH ORGANIZATIONS

### The Choir and Liturgical Music

The first St. Olaf's choir was established shortly after the parish dedication, but records and memories are a bit vague as to who led how many voices. The choir was often without a formal director, but was led at times by Josephine Secrist, who was also the organist, as well as by Tony Cristaudo, Grace Lundberg, and Margaret Steinbrueck.

When the church moved to Orchard Drive in the early 1960's, a small group was organized by Fr. Pollock. This group was replaced for a short time by a mixed choir, led by George Bajurin. During this period, Mary Alice Marion was the organist.

The present adult choir was organized and directed by Father David Goddard in 1974. There were 43 members, plus the accompanist, Shirley Lemieux. They sang on major feast days, work shops, and with the bicentennial choir for the Diocese. The period of 1976-82 was one of search for a regular director, with several persons serving for a short time. In 1980, in preparation for the new church dedication, the Diocesan Director of Liturgy, Sister Norita Lanners, OSB, engaged an outside director and some outside voices were added for the rehearsals and performance on this auspicious occasion. From this group came the nucleus of today's choir.

In 1982, Shirley Lemieux, then the organist, was named as the director. This was a happy choice for St. Olaf's. Under her direction since that time, and with the dedication of a small but loyal group, the choir has evolved into a fine, mature organization, recognized as one of the best in the Diocese, with a repertoire comparable to any.

Many parishioners have lent their voices to the choir over the years. Long-time members include: from early choirs, Gordon McGregor, Bill Marion, Terry Merritt, and Lucille Amburn; and more recently (since 1974): Neil Truelson, Roger Lowe, Helen and Sylvia Zugel, Marilyn Larrabee, Joanne Dean, Romana Ruemmele, Ann Arbanas, Norma Petet, Bob Singler, Don Heath, Leona Lakman, Ann Bushnell, Dana Lombardi, Beverly Murnin and Ed Lusienski. Roger, Marilyn, Romana, Norma, Dana, John Huffstetler and Ed are still serving as soloists or cantors. On occasion, the choir is also accompanied by a trumpet, trombone, bells, or violin. Shirley continues to attempt to recruit new voices through her humorous, soft-sell presentations. The choir sings on feast days, special occasions, and monthly masses. Rehearsals are scheduled every Wednesday evening.

Liturgical music is provided at most other masses by smaller groups or individuals, including some of the above, plus many more too numerous to mention by name, including organists, guitar players and cantors. The music provides them an opportunity to praise God in a special way.

## **St. Olaf's Council of Women (The Altar Society)**

The Saint Olaf Altar Society was organized in 1947. Mrs. William J. (Catherine) Schultz was elected president and Jane Lamph was Secretary-Treasurer. Discussion groups were frequent, friendly and informal. The meetings were often held in a member's home. Three daughters of Mrs. Schultz are still faithful members. They are Catherine Williams, Helen Sorenson and Dorothy Price.

During the early 1950's, the Altar Society was not always active. However, in 1955 it was reorganized. Mrs. Robert (Melva) Williams served as president. Since that time the society has been very active and of great value to the parish. During the 50's the ladies decided to sponsor annual luncheons to raise funds for the many items needed for altar care. Prior to that time the only funds were from membership dues.

The 1960's were a time of growth for the Altar Society. Involvement was not limited to parish activities. The women were involved in many civic affairs -- Red Cross blood drives, voter registration, election judges, League of Women Voters, and support of many Catholic Community Services. When St. Olaf's School opened in September, 1960, Altar Society members were involved in events to help the school. In 1967 the Altar Society was re-named the Ladies Guild. The guild changed its name back to Altar Society in 1974. Members were instrumental in setting up the first big "garage sale" in June, 1978.

"Woman of the Year" awards from each parish in the diocese were instituted in 1977. St. Olaf's first selection was Sister Frances Meyer, then principal of our school. Other Women of the Year for the 70's were Shirley Lemieux and the late Margaret Cassun, who was a leader in the Right to Life Movement.

The ladies had an era of "really doing great things" during the 1980's. They participated in the volunteer work on the church interior and provided lunches for all the volunteers. A gift of \$1,000 was given to the church building fund. Among the many items provided for the church were the tapestry, two holy water fonts, crystal and glass cruets, a silver tray, a host box, and a donation towards the purchase of the Stations of the Cross, along with the necessary linen cloths, candles, hosts, wines, vestments, and altar server robes. The volunteer work and workers' lunches were resumed during the interior finishing of the parish hall in 1981-82. On Oct. 15, 1983, the first event in the new hall was the Annual Ladies Luncheon and Boutique.

Women of the Year during the 1980's were Marilyn Larrabee, Margaret Menghini, Sister Barbara Mulvehill, Romana Ruemmele, Betty Shulsen, Betty Singler and Polly Erskine. Women of the Year for the early 90's have been Betty Pitchforth, Faye LaSalle, and Beth Murnin.

In 1992, special gifts were made to install kneelers for the side pews in the church, to help pay for the church divider, and towards the landscape beautification. In February, 1993, the society voted to change its name to the St. Olaf Council of Women. All women in the parish are welcome and encouraged to become actively involved in this outstanding and vital organization.

Entering its 51st year, the group continues to give much to enhance the parish. The ladies take care of the church cleaning and providing flowers for Easter, Christmas and special occasions, as well as continuing to provide linens, vestments, and altar servers' robes for the celebration of mass. Meals have been served following funeral Masses and the ill and handicapped are also provided with meals. Visits are made to shut-ins. Cards are sent by our "Sunshine Girl" on various occasions. And let's not forget all the receptions, special parties and gathering of items for the needy and the homeless.

Listed below are the names of the many fine, dedicated ladies who have served as presidents during the last 50 years:

Catherine Schultz	Lucille Branagan	Madeline Winslow
Peg Nealon	Sarah Costello	Jane Lamph
Terry Merritt	Mel Williams	Marie Wilson
Jo Lusinski	Margaret Menghini	Marianne Jurich
Pat Brandenburg	LaRae Auer	Barbara Glodowski
Ruth Ann Baker	Rose Evans (Robertson)	Marilyn Larrabee
Rita Truelson	Linda Schuh	Polly Erskine
Rosemary McCandless	Kathy Palmerton	Teddy Lewis
Sandy Winan-Berkow	Nola Smith	Betty Pitchforth
Jean Guarneri	Betty Glenn	Maureen Daniels
Kathleen Jones		

How can one list all of the names of hundreds of women who have held other offices and worked as chairman, tireless helpers, and have given their time, talent, and love of God to St. Olaf's? God bless all of them.

### **The Parish Council**

The first St. Olaf's Parish Council was organized in 1969, with Bob Williams as president. A constitution and by-laws were adopted. The council continued until 1972.

At the 1983 annual meeting, Fr. McNamara established an Ad Hoc committee to study the advisability of reorganizing a new council in accordance with the wishes of the bishop and the need for greater continuity. After a year's study the committee reported favorably and the annual meeting approved. A new set of guidelines was adopted, emphasizing the need for spiritual formation and consensus decisions. The new council was elected and installed on Sept. 16, 1984, with Bob Hipley as president. It has continued to function successfully as the coordinating activity for parish activities and functions. It consists of 10 members elected for two-year terms, as well as the pastor and representatives of parish organizations.

Committees include: Worship & Christian Service, Education and Evangelism, Family Life, Communications, and Property and Maintenance.

### Presidents:

1969-70	Bob Williams	1984-86	Bob Hipley	1988-89	Don Heath
1970-71	Bill Robertson	1986-87	Tubber Okuda	1989-91	Paul Lombardi
1971-72	Tom McDonough*	1987-88	Kathy Palmerton	1991-93	Ray Grenier

## **The Confraternity of Christian Doctrine (CCD)**

Two members<sup>3</sup> of St. Olaf's Parish were very active in establishing the program in the diocese. Wanda McDonough was chairman of the diocesan committee co-operating with CCD from 1955, vice-chairman of the NCCW committee from 1959 to 1963 and national chairman from 1963-1966. She was also a member of the National Lay Committee. She travelled extensively throughout the diocese explaining the program to pastors and parishes. Mel Williams was also active in her position with the diocesan NCCW.

The program was instituted in St. Olaf's in September, 1962, by Father Pollock with a full range of services, including: Teachers, Helpers, Fishers, Parent Educators, Apostles of Good Will, and Home Visitors. On Sept. 27, 1964, the Apostles of Good Will held a parish open-house for non-Catholics. 10,000 letters were sent out. 1120 people attended.

As time went on, the program focused on the religious education of those children not attending Catholic schools. Rosemary McGregor was director of the program for several years and received a diocesan award for her services. Sister Rosanna McNearney became director of Parish Education in 1985 and remained until 1990. Upon her departure, she was succeeded by Jerrie Barrett, who has been in the program for 20 years. Many other people have served as teachers, some for a number of years. The CCD program is probably the most essential and time-demanding of all the parish volunteer activities. We owe them all our profound gratitude.

## **The Order of Christian Initiation (RCIA)**

The Order of Christian Initiation of Adults (RCIA/OCIA), in accord with the restoration of the Catechumentate decreed by the Second Vatican Council, is the process of inquiry for adults and children who are seeking membership in the Catholic Church. The initiation of catechumens and candidates is a gradual process which takes place in the community of the faithful. With God's help they are strengthened spiritually during their preparation time, which culminates in the celebration of the Sacraments of Initiation at the Easter Vigil.

The Order of Christian Initiation was begun at St. Olaf's in the fall of 1985 at the urging of Fr. William Mobley. Sister Rosanna McNearney, DC, and Sister Jeremia Januschka, OSB, consented to undertake the process. They worked together for three years until Sister Jeremia left in the summer of 1988. Sister Rosanna continued as director, with a team of parishioners assisting her. In the fall of 1989 a class for children was started. It was taught by Sandra Miller.

When Sister Rosanna left the parish in September, 1990, George and Kaye Borchers were appointed the RCIA Coordinators by Father Daz. Classes for children continue and are taught by Paulette Hill. Nola Smith helped with these classes from 1990-92.

Since the inception of the program in our parish through the Easter Vigil of 1993, 64 adults and 26 children have become members of the Church.

## The Knights of Columbus

The Knights of Columbus is a national Catholic fraternal organization dating from 1882. It has been considered the "right arm of the church in America" by many popes. St. Olaf's Council 5502, although technically independent, has always devoted most of its efforts to the benefit of St. Olaf's.

The council was organized on Oct. 27, 1963. First officers were elected on Jan. 26, 1964, and first initiations were held on Feb. 2, with 56 charter members. Ted Comins was the organizer and first Grand Knight. Tom Brady was the deputy Grand Knight.

Council 5502 became one of the most active in the state. Jim Shulsen was State Deputy in 1968 and Robert Frost also served in that position. Ted Comins was State Treasurer for many years (1966-76). Gary Comins also served as State Warden and State Treasurer.

Locally, the council has carried out many projects and parish events, including, for many years, the St. Patrick's party, children's Easter and Christmas parties, Mother's Day Breakfasts and Carnations, the post-Christmas Tom & Jerry party, Ushering, Roses For Life, and many work projects. The Council contributed \$10,000 to the construction of the parish center, as well as regular contributions to the St. Vincent de Paul Society, the Trappist Monastery, the pastor, and sisters. The Fourth Degree Knights provide honorary escort service for special occasions, such as the church dedication and for members' funerals. Rick Large is the present Grand Knight.

### List of Grand Knights:

1963-65	Theodore E. Comins	1977-78	Robert J. Glodowski
1965-66	Thomas A. Brady*	1978-80	Louis T. Sayre
1966-67	William J. Gibson	1980-81	Rev. Thomas L. McNamara
1967-68	Clarence R. Rockwell	1981-83	Richard E. Benns
1968-69	Michael J. Lemieux	1983-84	Gary T. Comins
1969-70	Jerome F. Brim	1984-85	Leon Evans
1970-71	Tubber T. Okuda	1985-87	Art Hoffman
1971-72	Albert J. Sullivan*	1987-88	Dick Gourde*
1972-73	William E. Robertson	1988-89	Dennis Banning
1973-75	George E. Bajurin	1989-90	Art Arbanas
1975-76	Francis W. Welsh	1990-91	Kip Sayre
1976-77	Robert E. Frost	1991-93	Rick Large

\* Deceased.

## The School

During the early years of St. Olaf's the few students who attended a Catholic school had to go to Salt Lake City. When Father James Kenny became pastor in 1949 he was also teaching at Judge Memorial School and took several students with him in his car. Within a few years, the numbers had grown to the extent that a small, used bus was purchased to transport the children. Joe Perry was the first driver.

Eventually the problems of maintaining a bus in operating condition and securing drivers led the parish to negotiate an agreement with the Lakeshore (now UTA) bus lines to transport them. At one time St. Olaf students were being bused to four different schools: Cathedral, St. Mary-of-the-Wasatch, Judge Memorial and Bishop Glass. It was a long haul for those on the end of the line.

All this changed in the fall of 1960 with the opening of St. Olaf's School when the first three sisters arrived, Sister Theodora Nygren, Sister Ambrose McAdam, and Sister Stephanie Hudek. The first lay teacher, Patricia Pico Politano, was hired, as well as Mrs. Gayle Eddington (Wirth). The school opened with four grades.

Two more sisters arrived the next year and two more grades were added. Mrs. Aileen Harris began her teaching tenure which has now extended to 32 years through 1992-93! In 1963 two more grades were added, completing grades one through eight. The first class of 17 eighth-graders was graduated in May, 1964. Kindergarten has been a continual offering since 1975.

In 1987, the popular extended day care program began, providing students of working parents a safe, supervised environment before and after the regular school hours. Music, science, hot lunch, computer, physical education, and library programs have been added over the 33 years of the school history by the dedicated efforts of the Daughters of Charity, lay teachers, and volunteers. The parish and its organizations, as well as the Home and School Association, have provided funds and facilities such as the playground.

Literally hundreds of teachers, full and part-time, staff, and volunteer parents are responsible for the continuing success of St. Olaf's School. To name them all is impossible but Sister Germaine Sarrazin, Sr. Gertrude Sullivan, and Sr. Muriel Mountain will always be remembered from the sixties. And who could forget Sister Angeline Frederic, the beloved first grade teacher from 1969-79?

Mrs. Aileen Harris, the dean of the lay teachers, has taught the third, fifth and eighth grades during her tenure but her favorite is the seventh, which she has taught for 28 of her 32 years. She has been teaching many of the children of her earlier students. Another unforgettable teacher is Mrs. Billie Thoresen, who began teaching the second grade in 1972 and retired in 1989 after 17 years of service. Our principal since 1984, Sister Stella Marie Zahner, also has given 17 years to the school, teaching sixth and eighth grades prior to 1984.

The Frank and Frances Welsh family had all of their 14 children in the school from 1963-1981. All of them graduated from the eighth grade at St. Olaf's. Some years there were eight Welsh children in eight different grades. Several families have had children and grandchildren in the school almost every year since it opened.

Thousands of children have benefitted from their enrollments at St. Olaf's School. The nearly 700 eighth grade graduates from 1964 to 1993, listed herein, represent them all.

## ST. OLAF'S SCHOOL PRINCIPALS

Sept. 1960 to May 1965 -- Sister Theodora Nygren, D.C.  
Sept. 1965 to May 1971 -- Sister Martha Kramarz, D.C.  
Sept. 1971 to May 1977 -- Sister Frances Meyer, D.C.  
Sept. 1977 to May 1983 -- Sister Barbara Mulvehill, D.C.  
Sept. 1983 to May 1984 -- Sister JoAnne Laviolette, D.C.  
Sept. 1984 to present -- Sister Stella Marie Zahner, D.C.

### Other Sisters Who Served Several Years:

Sr. Muriel Mountain, 1961-68	Sr. Germaine Sarrazin, 1962-69
Sr. Gertrude Sullivan, 1962-70	Sr. Pauline Maronek, 1963-69
Sr. Angeline Frederic, 1969-79	Sr. Delia Stretch, 1970-76
Sr. Martha Lopez, 1970-75	Sr. Irene Nabity, 1972-76
Sr. Cecilia Van Zandt, 1977-80, 1984-86	Sr. Rosanne McNearney, 1984-91

### Lay Teachers of Early or Long Tenure:

Patricia Pico Politano, 1960-64	Jo Lusienksi, physical education, 12 years
Aileen Harris, 1961 to present	Shirley Lemieux, Music
Billie Thoresen, 1972-1989	Celeste Shine
Cathy Moore	Susan Mommsen
Jane Hipley, 1980 to present	

## LIST OF GRADUATES, 1964-1993



First Graduation Class, 1964

Front Row: Clare Whelan, Carol Romano, Kathleen Farmer, Meg Bosch, Virginia Maloney. Second Row: Steven Baird, Jay Dee Krek, Tom Cavanagh, Bob Reineccius, Jeffrey White, Phil Lusienksi, Randy Steinbach. Back Row: Pat Kelly, David Cristaudo, John Spiess, James Perfili, Alan Comins, Sister Georgiana Gilsdorf.

CLASS OF 1965

Cathy Carraher	Jeanne Giuda	Victoria Marion	Mark Swanson
Bill Cassun	Karen Hayes	Scott May	Lynda Thompson
Barbara D'Autremont	Kevin Hayes	Pennie Mellen	Claudia Thorpe
Susan Grey	Thomas Lalor	Mike McDonough	Paul Truelson
Sandra Golden	Kay LeBert	Margaret Reineccius	Randy Walls
Paula Green	Mary Ingleby	Steve Rockwell	Louis Williams
Lloyd Gronning	Michael James	Deborah Stansbury	

CLASS OF 1966

Laurie Bosch	Regina Farmer	Deborah Nourse	Victor Tritle
Martin Bowden	Vickie Hesse	Mary Anne Piquette	Christine Verbeck
Patricia Cardwell	Deborah Hickenbotham	Marie Pitchforth	Deborah Walls
David Chiarello	William Lalor	Dan Rockwell	Francis Welsh
Donald D'Autremont	Roberta Jewett	Irene Sash	Maureen Whelan
Penny Duddleston	Donald Mellen	John Sweet	Dan Williams
Michael Faiola	Patrick McGuire	William Thompson	

CLASS OF 1967

Mary Jane Baker	Mary Gourde	Robert Jordan, Jr.	Daniel Retz
Galen Barry	Rick Gourde	Georgianne Jurich	Gloria Robertson
Tom Bracken	Daniel Hart	Linda Merrill	Claudia Sayre
Mark Brandenburg	Mary Hendrickson	Bartley McGuire	Susan Standiford
Nick Cassun	Scott Hesse	Vincent Nourse	Stephen Thomas
Dom DiEsposti	Eileen Hillis	Kathleen O'Callaghan	Harvard Whelan
Robert Dietrich	Karen LeBert	Eileen O'Connor	Michael Wurster
Mark Earley	Steven James	Richard Powell	
Arnold Gardner	John Johnson	Thomas Reineccius	

CLASS OF 1968

Stephen Baird	Donna DiEsposti	Mary Ellen Murnin	Michael Thomas
Patrick Barry	Jeannie Evans	Steven Nourse	Celeste Welsh
Karen Beard	Deborah Gibson	Gerry Okuda	Linda Willhard
Elizabeth Bolen	Jane Gronning	Deborah Robertson	Kim Wilson
Barbara Brim	Steven Hennessey	Chuck Rockwell	Karen Pitchforth
Eileen Carraher	Dan Lalor	Ellen Standiford	
Gary Comins	Sheila Merritt	Mark Synarski	

CLASS OF 1969

Barbara Baker	Barbara Frost	Jacqueline Jones	Kathleen Welsh
Patty Bawden	Vickie Garcia	Nancy McGregor	Monika Williams
Sherry Butler	Steve Gardner	Kirk Kinservik	Janet Willhard
Kevin Culligan	Alice Gourde	Kathryn Kund	Richard Zaninovich
Gary DeMarco	Richard Hautzinger	John Reineccius	Karen Ziegler
Tom Evans	Mary Hillis	Francis Standiford	
Wesley Farquer	Doug Lusinski	Christina Trueba	
Ed Fisher	Richard James	Denise Truelson	

CLASS OF 1970

Cheryl Arbanas	Margaret Dean	Fred LeMire	Tim Welsh
James Baker	Cathy Etchingham	Anita Piquette	Susan Willhard
John Bracken	William Fairfield Jr.	Nancy Robertson	Billie Williams
Mike Cassun	Fritz Fisher	Karen Synark	Patrick Wurster
Constance D'Autremont	Donna Gibson	John Trueba	

CLASS OF 1971

Mike Bosch	Theresa Gourde	Kelly Murnin	Jon Smith
John Cahill	Robert Leinweber	Mike O'Donnell	Virginia Stables
Mary Lou DeMarco	Christine Markisich	Barbara Powell	Pamela Steinbach
Lavina Farquar	Annette Kinservik	Mike Robertson	Tyler Steinbach
Bob Fernandez	Steve Murnin	Vera Ann Shirley	Susan Thomas
			Pat Welsh

CLASS OF 1972

Janet Auer  
Beth Bajurin  
Tom Beck  
Patrick Bosch  
Christine Butler

Tim Cahill  
Bridget Cassun  
Colleen Fisher  
Sharon Formeller  
Arthur LeMire

Deborah James  
Ernest Markisich  
Edward Kochevar  
Matt Korogi  
Sidney Price

Don Rockwell  
Paul Tooman  
John Welsh  
David Willhard

CLASS OF 1973

Steven Archer  
Valerie DeMarco  
Leon Fernandez  
Cindy Formeller

Greg Gardner  
Paul Hubbard  
Del Lusienki  
Joan Kelly

Gina Robertson  
Pat Robertson  
Mike Saitta  
Cathy Trueba

Jim Welsh  
Michelle Williams  
Dennis Wurster

CLASS OF 1974

Brenda Arbanas  
Tim Bosch  
Jamie Bosch  
Cantil Priscilo

Steven Crane  
Rick Evans  
Mike Fagen  
Jim Frost

Gina Gourde  
Camie Hodges  
Paul Lemieux  
Denise Jennings

David Markisich  
Joe Welsh

CLASS OF 1975

Andrea Bajurin  
Theresa Baker  
Theresa Powers

Kathleen Fagen  
Brent Gardner  
Lorraine Gourde

Loretta Gourde  
Glen Heagney  
Tracy Price

Carol Tooman  
Susan Welsh  
Kathleen Wurster

CLASS OF 1976

Katy Bajurin  
Susan Baker  
Mike Cahill  
Kevin Cudmore  
George Engel  
Ronnie Fernandez  
Evan Fisher

Mark Francis  
Robert Grube  
Joan Harris  
Victoria Johnson  
Erin Kelly  
Dale Krek  
Joel LaSalle

Michelle Lemieux  
Steve Macklyn  
Terry Murnin  
Joyce O'Brien  
Gretchen O'Connell  
Julie Palumbo  
Gerald Reeder

John Robertson  
Elizabeth Sayre  
Andrea Smith  
Christine Smith  
Tim Tooman  
Rosemary Welsh  
Kevin Williams

CLASS OF 1977

Diane Arbanas  
David Barney  
Jimmy Brunatti  
Diane Cookson  
Claire Dean

Randy Evans  
Tom Gourde  
Kobi Hodges  
Tom Lowe  
John Lemieux

Matt Larrabee  
Matt Lingenfelter  
Kathleen Pollard  
Michael Rice  
Mary Robertson

Kathleen Smith  
Daniel Trueba  
Theresa Truelson

CLASS OF 1978

Kevin Arbanas  
Lisa Bajurin  
James Baker  
Kathy Bracken  
Mark Brusckie  
Gina Glodowski  
Shawn Hokanson

Cathy Lowe  
Dawn McKinney  
John Lane  
Mike Meader  
Kathleen Kelly  
Trina O'Connell  
Laura Palubeskie

Diane Palumbo  
Drew Roberts  
Chris Sayre  
Renee Schrupp  
Marjorie Singler  
Mike Smith

Philip Stephenson  
John Tooman  
Theresa VanHouse  
Mary Welsh  
Richard Welsh

CLASS OF 1979

Glenn Arbanas  
Margaret Baker  
Robert Banning  
Richard Best  
Kari Bopp  
Tom Burns  
John Byrne

Pat Cahill  
Annette Cignetti  
Norbert Cunningham  
Kelly Fagen  
Bernie Farquer  
Monty Ferguson  
Michelle Formeller

Paul Gourde  
Steve Lowe  
Melinda Lower  
Elizabeth Leachman  
Steven Knell  
Michael Roberts  
Warren Ruummele

Roxane Smith  
Tom Trueba  
William Upmore  
Kimberly Williams

CLASS OF 1980

Virginia Adelhardt	Gina Evans	Paul Lower	Rhonda Smith
Dan Auer	Connie Fleck	Russell Marks	Marianne Spencer
David Best	Brian Hales	Mark Milligan	Joe Steinbach
Stephanie Bopp	Audrey Klarich	Marion Oley	Mary Tooman
Bob Cunningham	James LaSalle	Christopher Page	Paul Vanderwert
Marc Cwiklik	Gus Glodowski	Dan Pope	Bob Welsh
Diane Dauven	Darren Huff	Andre Rodriguez	Tim Wetterhall
Susan Davies	Sylvia Lorenzana	Cheri Ruebel	
Chris Dean	Theresa Loar	Brett Sebree	

CLASS OF 1981

Linda Adelhardt	Jack Chase	Monica Montgomery	Joe Trueba
Deanne Alfred	Jennifer Formeller	Catherine Morehouse	Carl VanLeeuwen
Patrick Baker	Kelley Harrison	Daron Katsilos	Ann Wanner
Dennis Banning	Greg Hoffman	Brad Knell	Dan Welsh
James Bryan	Jill Hull	Leslie Oberg	Ronald Williams
Patricia Byrne	James McKinney	Robert Ortega	
Mary Cahill	Matt McPolin	Shauna Terrill	

CLASS OF 1982

Jennifer Bass	Christine Garcia	Julie Lowe	Sarah Searcy
Julie Bloss	Scott Gross	Andrew Lower	George Singler
Diana Briggs	David Johnson	Spence McKean	Pat Smith
Greg Brotherton	Tim Larrabee	Christine McKinney	Kirk Waasdorp
John Dauven	Troy Larsen	Robb Miner	
Eric Eiting	Raquel Lewis	Greg Pavlovich	
Steve Evans	Gerry Lorenzana	Tracy Roniger	

CLASS OF 1983

Sean Barrett	Jennifer Knell	Sean Macklyn	Jerri Ruebel
Annette Felger	Roque Lachica	Christine Meyer	Wayne Ruumemele
Gerry Gourde	Paul Larrabee	Tim Oberg	Brandy Stanfield
Marline Granados	John Lindsey	Adam Palubeskie	David Terrill
Ginger Gustafson	Laura Lochhead	Tina Palubeskie	Juliane Vaughn
Laura Hipley	Heidi Lorenzana	Ed Prisco	Larry Vogel
Jodi Howard	Pamela McDonald	Debbie Pillard	Jody Voivod
Teresa Janecki	Jennifer McPolin	Nancy Roberts	Jennifer Wright

CLASS OF 1984

Darin Auer	Jean Gomez	Christine Pavlovich	Long Tran
Christy Baker	Karen Gross	John Proctor	Tim Wanner
Ken Bass	Michael Hoffman	Tony Ramirez	Brenda Welsh
Doug Dobson	Kevin Klarich	Charles Sauer	Neal Witbeck
Shannon England	Dan Larrabee	Chris Schuh	
Marcus Evans	Sinead McPeak	Tom Smith	
Staci Fahey	Elizabeth Nichols	Cindi Swift	

CLASS OF 1985

Noel Abel	Krista Langton	Tim Petsche	Dirk Vaughn
Mark Barney	Debbie Lemieux	Shab Puri	Francine Wanner
Kelly Durham	Donna Lochhead	William Quackenbush	Jennifer Whiteman
Brandt Garrison	Mitri Muna	Karri Ruebel	
Marlo Granados	Chris Newson	Jon Smalley	
Jenni Howard	Nick Parkin	Craig Spencer	

**CLASS OF 1986**

Vijay Bachus  
William Brown  
Joseph Chase  
Michael Clemments  
James Formeller

Manny Gomez  
James Gourde  
Lori Haddan  
Jayde Holder  
Dave Jennings

Brian Lotti  
Thomas Martin  
Sean McPeak  
David Morris  
Matthew Parkin

Alisha Shutt  
Christian Spilker  
Laura Vickrey  
Kimball Walton

**CLASS OF 1987**

Brian Arbanas  
Kelly Baldwin  
Rebecca Britter  
Sharyn Dobson  
Colleen Fahey  
David Feolo

Eric Grotepas  
James Hoskins  
Brenda Marek  
Robby McCall  
Megan McEnulty

Jason McGrath  
Matthew Messerli  
Deena Muna  
Daniel Nowicki  
Clifton Oppenheim

Marie Elena Ramirez  
Roslyn Ryan  
Stephen Schuh  
Juli Swift  
Dion Waasdorp

**CLASS OF 1988**

Sheela Bachus  
Sam Bevan  
Tracey Dielman  
Karen Dobson

Michele Fotes  
Sam Francis  
Melisa Haddan  
Ann Hunter

Sammy Kemper  
Olga O'Neal  
Tim Roelofs  
Pam Vickrey

Jenifer Visarraga  
Ashley Wagner  
Kathy Weaver  
Witney Williams

**CLASS OF 1989**

Chelsie Acosta  
Bryan Borchers  
Shawn Darragh  
Stephen Duffield  
Katherine Fahey

John Firreno  
Lisa Grotepas  
Sarah Larrabee  
Matthew Lucas  
David Messamore

Matthew Morann  
Amanda O'Donnell  
Matthew Oswald  
Laurie Palmerton  
Christopher Peterson-Koer

Tony Petsche  
Naomi Roelofs  
Geoffrey Wallin

**CLASS OF 1990**

Tina Agrapides  
Craig Britter  
Alan Clemments  
Todd Dielman  
Tannaz Foroughi

Amie Fullmer  
Gary Hegeman  
Luke Imboden  
Leah Jaramillo  
Shawna Kelsey

Beth Lewis  
Chris Little  
Jesse Marx  
Elisha Moffitt  
Amber Moss

Robert Nowicki  
Dean Palmerton  
Brandon Raso  
Stacey Solan  
Amika Taniguchi

**CLASS OF 1991**

Peter Agrapides  
Joey Alamilla  
Stephanie Blum  
Lucas Domian  
Marie Duffield  
Dannielle Holder

Michael Huggins  
Anthony Irsik  
Pamela Japlit  
Angie Lewis  
Nidia Lorenzana  
Linsey Malcom

Kaleen McCandless  
Somyr McLean  
Emily McRea  
Andrea Morris  
Chris Newlin  
Joe Robinson

Tyson Taniguchi  
Chris Vail  
Clare Wallin

**CLASS OF 1992**

Kelly Alamilla  
Melissa Bradley  
Matt Comins  
Josh Edwards

Tony Firreno  
Amy Hinijosa  
Renee Perez  
Chris Petsche

Nathan Raso  
Susan Reynolds  
Michelle Smith  
Ryan Vanderbur

Cara Varallo  
P. J. Walker

**CLASS OF 1993**

Jeramie Acosta  
Bryan Berg  
Brian Buge  
Nicolina Calfa  
Robbie D'Ausilio

Liz Fahey  
Kelsie Fullmer  
Laura Hancock  
Mollie Ingebretson  
Gabriel Medina

Cristina Merino  
Christian Muck  
Margaret Nelson  
Julie Nice  
Amber Pace

Bobby Rendon  
Danny Schoenfeld  
Angela Shelby  
Adam Thomas  
Craig Thompson

## ACKNOWLEDGMENTS

We are especially indebted to:

Raphael and Chris Larrinaga  
dba Screen Scapes  
4555 South 300 West  
Salt Lake City, Utah 84107  
Tel. 264-9294

for their assistance in the formatting and contribution of the typesetting of this booklet.

Also to:

Terence O'Toole Images  
255 West 700 South  
Salt Lake City, Utah 84101  
Tel. 355-5970

for contribution of commercial photographs of St. Olaf buildings.

(Chris and Terry are both St. Olaf school graduates.)

And:

Mickey Adelhardt et al.

for the snapshots of the parish center construction and church activities.

# HISTORY OF SAINT OLAF PARISH

Saint Olaf Catholic community is a living, thriving entity. Whether we have lived here for 70 years or for a week, Saint Olaf has been and is a most important part of all our lives.

As with any important idea, our parish began with baby steps. On May 29, 1943, Bishop Duane G. Hunt established our parish as a Paulist Mission. Our first church was located in Bountiful on 100 North just above Main Street in a very small bungalow seating approximately 45 people. Although it was remodeled to accommodate 80 people, it became apparent that more space was needed.

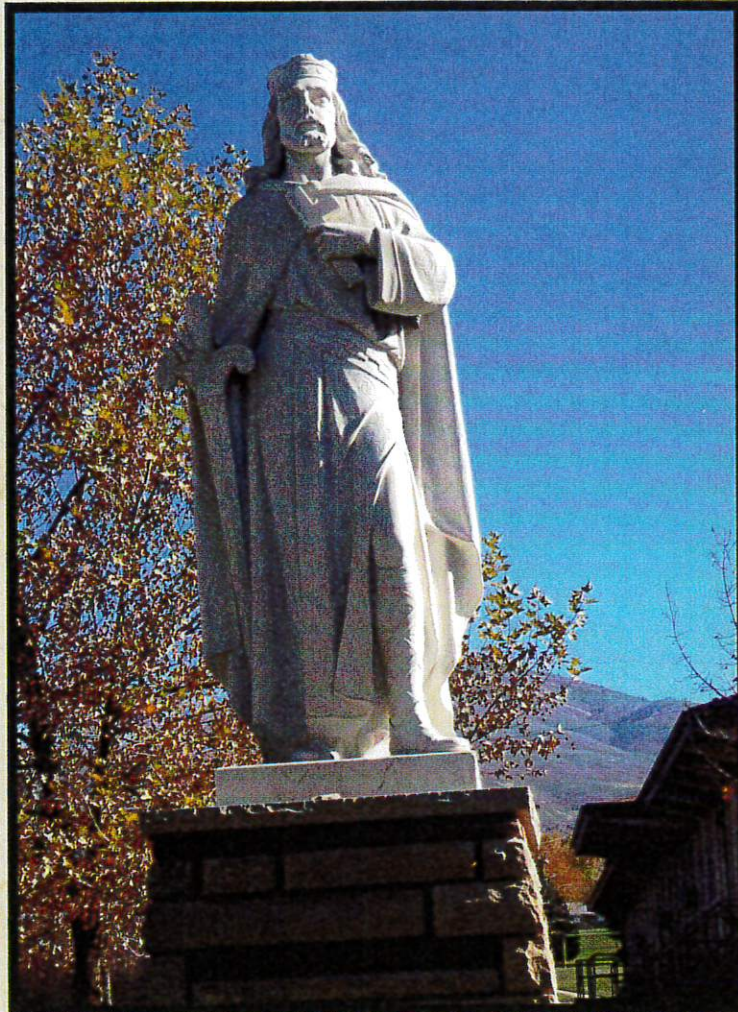
In 1958, permission was obtained to build and staff a parochial school at our current location. In 1960 our school opened, staffed by the Daughters of Charity. During that time, the size of the parish doubled from 180 to 313 families, much of that due to the school. Mass was celebrated in a large room in the school which later became the school library.

At the beginning of 1978, our parish had grown to over 400 families and the community decided it was time to build a permanent church. Our parish center was developed to include a church which seats 500 people and a parish hall under one roof. A parish volunteer program was begun to finish the interior and literally hundreds of people participated in this phase. Our new church was dedicated on July 29, 1980, the 950th anniversary of the Martyrdom of Saint Olaf.

Today, Saint Olaf has over 500 hundred families and continues to grow. We have also integrated members of the Filipino Community into our parish. We have had 13 pastors over the last 70 years who have served our parish and our community.

We are blessed to have had and still have a tremendous group of people of all ages and walks of life who step into whatever role is needed to keep us successful.

# SAINT OLAF OUR PATRON SAINT



Saint Olaf was the son of Harold Grenske, King of Norway. Olaf joined the Vikings and spent eight years in piracy before returning to Norway to become king in 1015 A.D. During his travels he was converted to Christianity. When he returned to Norway, he brought with him a Catholic bishop and a number of priests and monks to spread the gospel. He tried to introduce Christianity by force and was eventually driven from the country. He died in battle in 1030. Because of the miracles reported at the River Nid, where he died, he was venerated as a martyr and saint. He is the patron saint of Norway.

In 1965, the statue of Saint Olaf which now stands in front of the school was donated by long time parishioners James and Betty Schulsen, now deceased.

# OUR HISTORY

*"God looked at everything He made  
and found it very good..."*

Genesis 1:31

Saint Olaf Parish was established May 26, 1943 as a Paulist Mission to include all of Davis County. The name of St. Olaf, Viking king and patron saint of Norway, was chosen by Bishop Duane G. Hunt in recognition of the Scandinavian residents of Utah. During 1943-44, masses were held throughout the county in a trailer chapel.

The first church building was a small brick bungalow at 55 East 100 North in Bountiful, purchased in 1944. In 1955, the current church property was purchased, then in 1959, ground was broken for a new building to house the church and school. Groundbreaking for the present church and parish hall occurred in 1979 and the new church was dedicated July 29, 1980, the 950th anniversary of the martyrdom of St. Olaf.

The parish has grown from 160 families in 1956 to 400 families in 1978 to more than 500 families today. Saint Olaf Parish has had 11 pastors over 65 years. Many parishioners have dedicated their time and resources to help create a loving community of faith so that the current generations of parishioners can continue to worship, educate, and serve.

