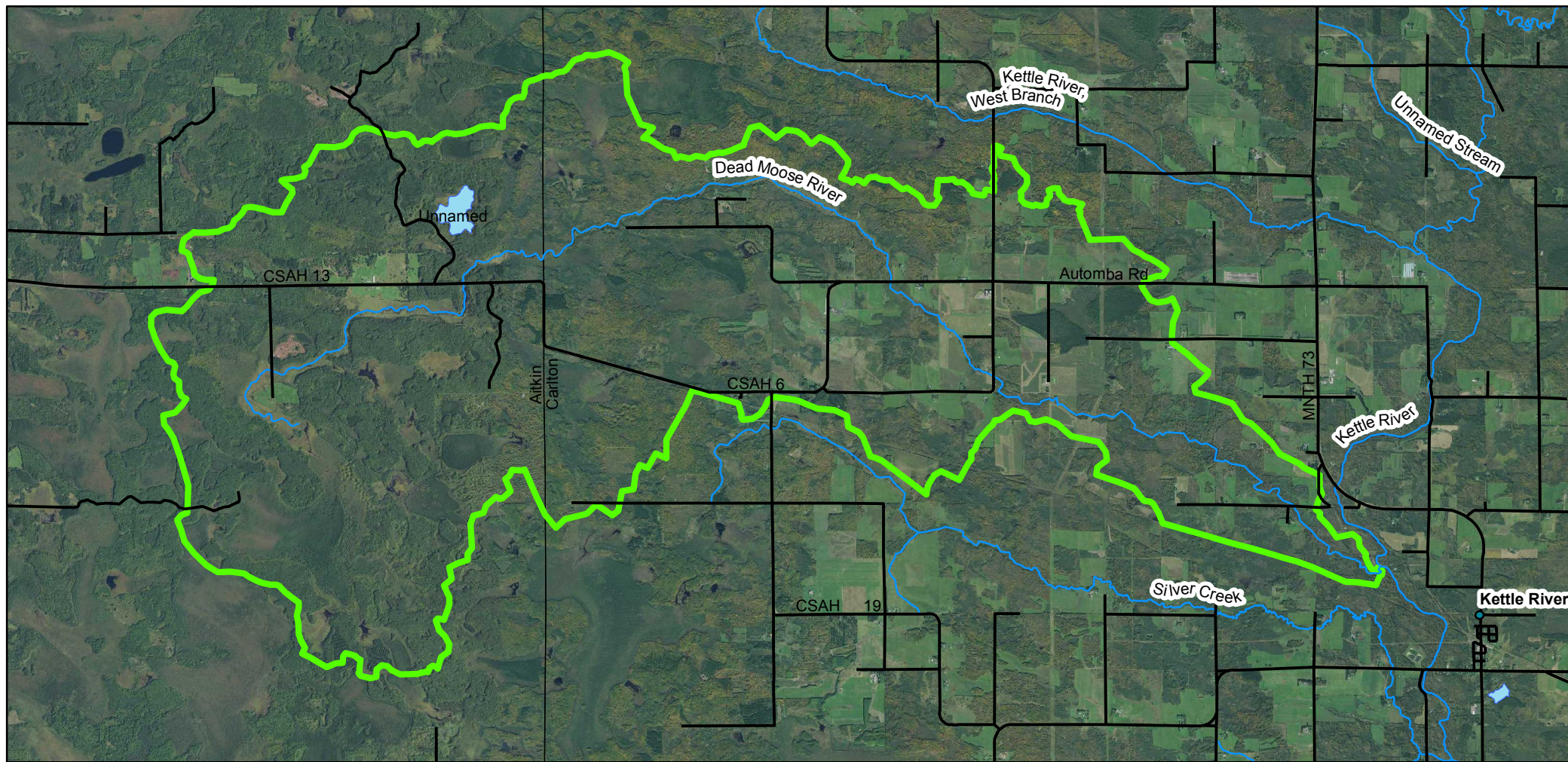


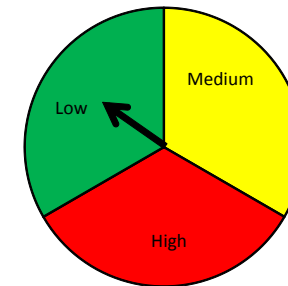
# 35002 Dead Moose River Subwatershed



**Major Watershed: Kettle River**

The Kettle River watershed covers 672,235 acres in northeast Minnesota and lies within Northern Lakes and Forests ecoregion. Parts of Aitkin, Carlton, Kanabec, and Pine counties are in the Kettle River watershed. The headwaters for the Kettle River begin in Carlton County, and the river flows 104 miles south to its confluence with the St. Croix River south of Hinckley.

## Risk



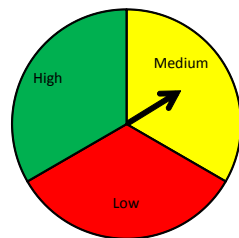
Risks to water quality can come from many different sources. Development, land use, invasive species, soil type and slope are all possible contributors. Watersheds with higher risks require more restoration measures to improve water quality. Depending on the stressors involved, that could be accomplished in a variety of ways, from fencing livestock out of impaired waters to creating rain gardens in urban watersheds. For lower risk watersheds, protection methods can help maintain water quality. Protection can come from conservation easements or forestry planning.

- This Watershed has low risk. Protection methods such as forest management plans and easements will help maintain water quality.

The Carlton SWCD is here to help you improve water quality on your property, whether it is protection or restoration. Contact us with your questions!



## Protection



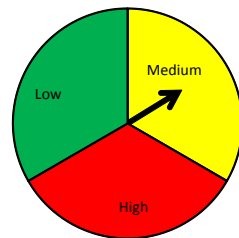
Public lands are considered protected because they are typically managed to protect and preserve natural resources. Carlton County has an abundance of federal, state and county lands that provide habitat to a diversity of species and protect sensitive areas.

Lands can be protected in many ways. Forest management plans, conservation easements and land trusts help ensure natural resources are protected for future generations.

- This watershed is moderately protected (21-40%). Additional protection would help ensure water quality is preserved.

If you are interested in learning about way you can protect your property, contact the Carlton SWCD to learn about options.

## Disturbed Lands

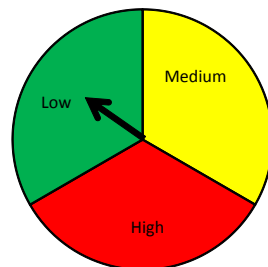


Changes in land use can have large effects on water quality. Roads and parking lots are impervious to water. They allow water to run off the land more quickly, increasing the speed and amount of water flowing over the land. This leads to increased erosion. Farm land can also increase run off and erosion during certain times of the year. Luckily, Carlton County has an abundance of natural land uses, including forests and wetlands.

- This watershed has moderate land disturbance (8-30%). In this watershed, these changes are mainly from forested to farm land. In general, farm best management practices would help protect and improve water quality.

Contact the Carlton SWCD to learn what would work best on your farm or property.

## Soil Risk



Some soils are more prone to erosion than others. The small particles of clay are easily carried by water. Clay soils are also prone to slumps and slides during high run-off events. The soils of Carlton County are diverse, with the eastern side of the county having more clay and therefore more erosion problems. Different tree and other plant species prefer different soils, so it's important to consider soil type before you plant.

- This watershed has less erodible soils.

If you have problems with erosion on your property or need some tree planting assistance, contact the Carlton SWCD.

## Outstanding Resources

Golden Winged Warbler  
Sharp-tail Grouse

## Water Quality Concerns

None



808 3<sup>rd</sup> Street  
Carlton, MN 55718  
218-384-3891

