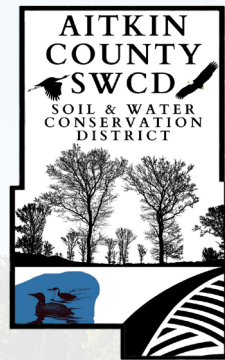
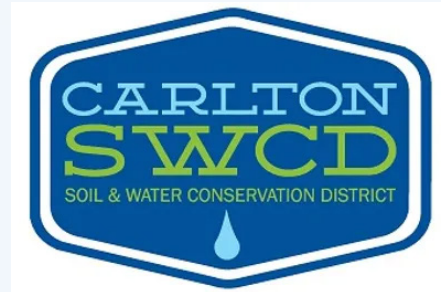


## Project Partners



Salo  
Township



**Itasca County**  
Minnesota



For questions or cost share to implement practices, please contact your local partners:

- Aitkin SWCD: 218-927-7284
- Cass SWCD: 218-547-7399
- Carlton SWCD: 218-384-3891
- Itasca SWCD: 218-326-5573
- North St. Louis SWCD: 218-749-2000
- South St. Louis SWCD: 218-723-4867

Funded by



View the plan online!  
Scan this QR code to visit the  
plan's website



## WATERSHED VISION

*From the peatlands to the iron range, we work to protect our vibrant Northwoods lands and waters for vibrant communities.*




# Watershed Highlights

- The Upper Mississippi – Grand Rapids watershed is the first watershed downstream from the Mississippi Headwaters.
- It spans 1.3 million acres in Aitkin, Carlton, Cass, Itasca, and St. Louis counties.
- It also includes portions of the Mille Lacs Band of Ojibwe Indian Reservation, and a number of communities including Grand Rapids, Coleraine, Cromwell, Hill City, McGregor, and Remer.
- It is home to over 600 high-quality lakes, 2,000 miles of rivers, and abundant forests and wetlands.

# Plan Highlights

- Implementation of this plan is voluntary, and outreach, cost share, and incentive programs will be used to assist with voluntary implementation on private lands (See map below).
- A Landscape Stewardship Plan was developed in parallel with this watershed plan that helped prioritize forest protection and management for water quality and habitat improvement.
- The Planning partners set goals during the planning process. The goals and their outcomes are highlighted below. Funding from the Clean Water Land and Legacy Amendment will be provided for plan implementation.

## 10-Year Goals for the UM-GR Watershed



**Lakes**  
**Goal:** Reduce phosphorus in priority lakes by **40lbs/yr**. Restore **3 linear miles** of shoreline on priority lakes.  
**Outcome:** Improved water quality and shoreland habitat.



**Farms**  
**Goal:** Implement **3,659 acres** of agricultural best management practices.  
**Outcome:** Improved water quality and soil health.




**Streams**  
**Goal:** Protect or enhance **1 miles** of priority streams.  
**Outcome:** Improved water quality and riparian habitat.




**Wetlands**  
**Goal:** Maintain and enhance wetlands and peatlands at current rate.  
**Outcome:** Water storage and wetland habitat is maintained.



**Forests**  
**Goal:** Implement **8,162 acres** of forest protection. Implement **36,000 acres** of forest management.  
**Outcome:** healthy forests that protect water quality and are resilient to climate variability and invasive species.

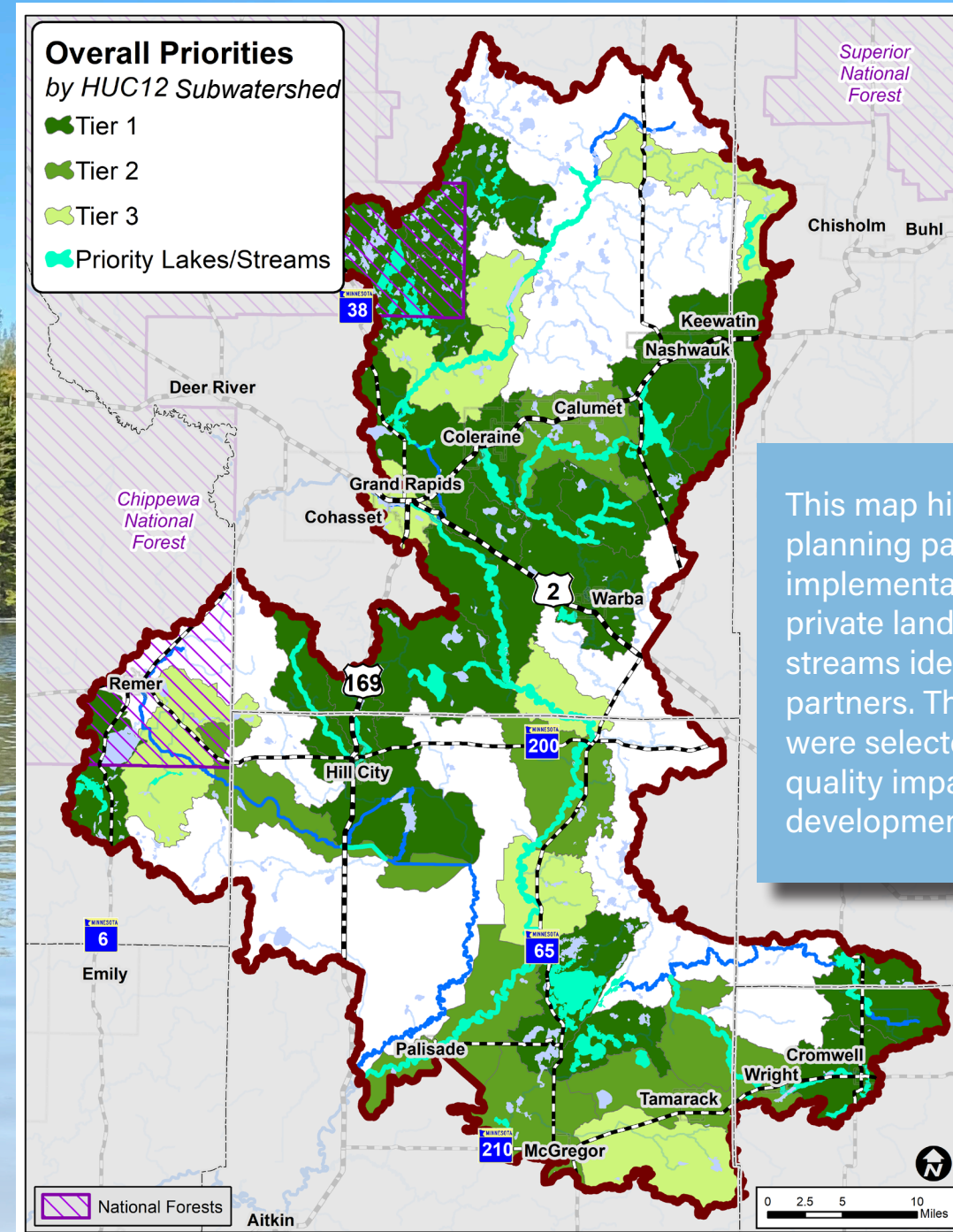


**Groundwater**  
**Goal:** Seal **50 unused wells**.  
**Outcome:** Groundwater quality is protected.



**Stormwater**  
**Goal:** Complete stormwater retrofit analysis for **3 communities**. Implement **5 stormwater projects**.  
**Outcome:** Water quality is improved and communities are resilient to climate variability.

## Where to Focus Work



This map highlights where planning partners can prioritize implementation efforts, including private land and priority lakes and streams identified by the planning partners. These lakes and streams were selected based on water quality impairments, trends, and development pressures.