



# Equipment Rental Program

## The Carlton SWCD has biochar kilns to rent!

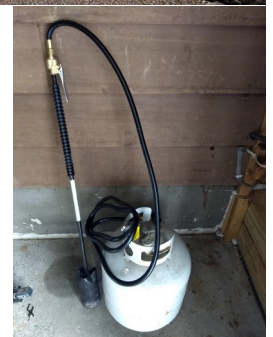
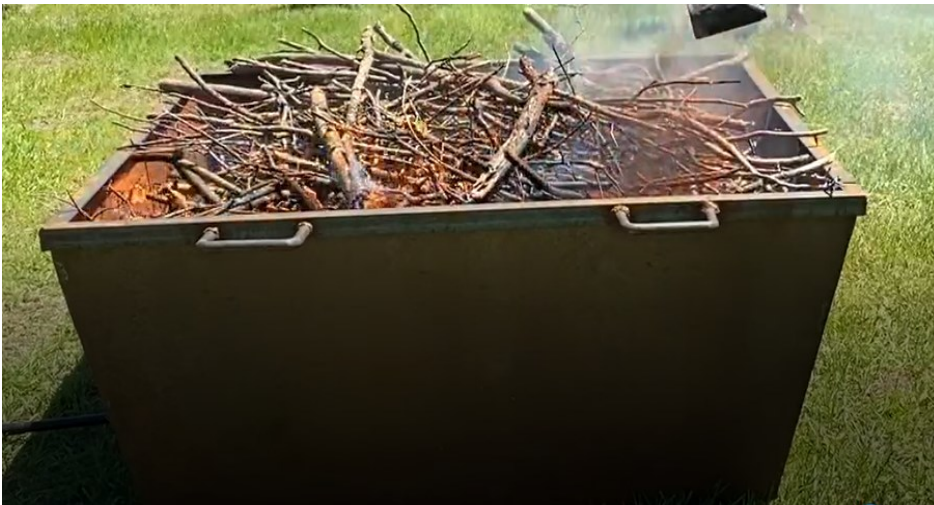
The Carlton Soil and Water Conservation District (SWCD) has equipment available to turn your brush, tree limbs, and other small diameter woody biomass material into biochar that has several beneficial uses. There are 2 Oregon kilns to choose from depending on your site. One kiln has removable wheels and a hitch/handle to roll it around your site. The other kiln does not have wheels but a utility trailer can be rented to pull with a yard tractor or ATV to aid with mobility around your site. Either kiln can be rented for \$70 each for a 3 day period.

Renter is responsible for picking up and returning kilns. Each kiln weighs around 300 lbs so renters should have adequate help to load and unload kilns and a safe transport in a truck or trailer with adequate tie down capability.

Associated equipment can be negotiated as needed and can include: 65 gallon water tank with garden hose (no pump) for quenching the burning kiln, McCleod, square shovel, propane torch for lighting (no tank), utility trailer for site transport of kiln without wheels. Associated equipment rate is \$40 for three day rental.

For information or to be added to the equipment rental schedule, please call Brad Matlack or fill out an online request form at

<https://carltonswcd.org/landowner-resources>



**CARLTON SOIL & WATER CONSERVATION DISTRICT**

808 3rd Street Carlton, MN 55718 . 218-384-3891. [www.carltonswcd.org](http://www.carltonswcd.org)