

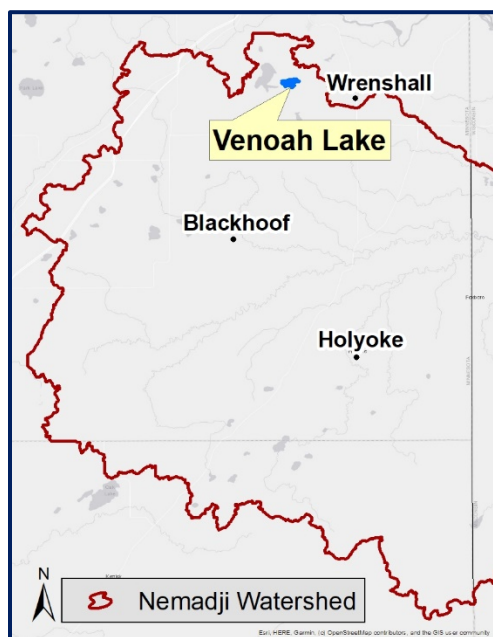


## Venoah Lake Implementation Plan

In 2019-2020, Carlton and Pine Counties and Soil and Water Conservation Districts (SWCDs) partnered to develop the Nemadji River Comprehensive Watershed Management Plan.

The planning process consisted of:

- ✦ topic-focused stakeholder meetings that included citizens, businesses, state agencies, local experts, and local officials;
- ✦ prioritizing issues and concerns for the watershed;
- ✦ developing action items for specific watershed areas; and
- ✦ local agencies adopting a ten-year watershed plan for 2021-2031.



This Venoah Lake Implementation Plan is based on the Nemadji River Comprehensive Watershed Management Plan.

In this plan, Venoah Lake is a priority for protection because it has wild rice and is not currently developed.

The next few pages explain priority projects that will work to improve Venoah Lake in the future.



# Why Does it Matter?

Want to learn more about taking care of lakes?  
Watch a video here:  
<https://youtu.be/dwjAoRwLrmM>



## Property Values

**What is your lake home worth?** Studies on Minnesota lakes show that lake property values are directly tied to water quality. For a three-foot decrease in water clarity, prices were reduced up to \$594 per shoreline foot. For a three-foot increase in clarity, prices increased up to \$423 per shoreline foot. This change in value can be a significant financial loss or gain to an individual property owner as well and a community.



## Fishing & Recreation

**Do you enjoy fishing and swimming?** Minnesota's native gamefish, such as walleyes, need clear water to see their prey, aquatic plants to hide and spawn in, and shade to keep cool. Keeping native plants in the lake and trees along the shoreline provide shade, spawning habitat, and protection for the game fish we love to catch. These plants and trees also help stop runoff and keep the lake clear for swimming and recreational activities.

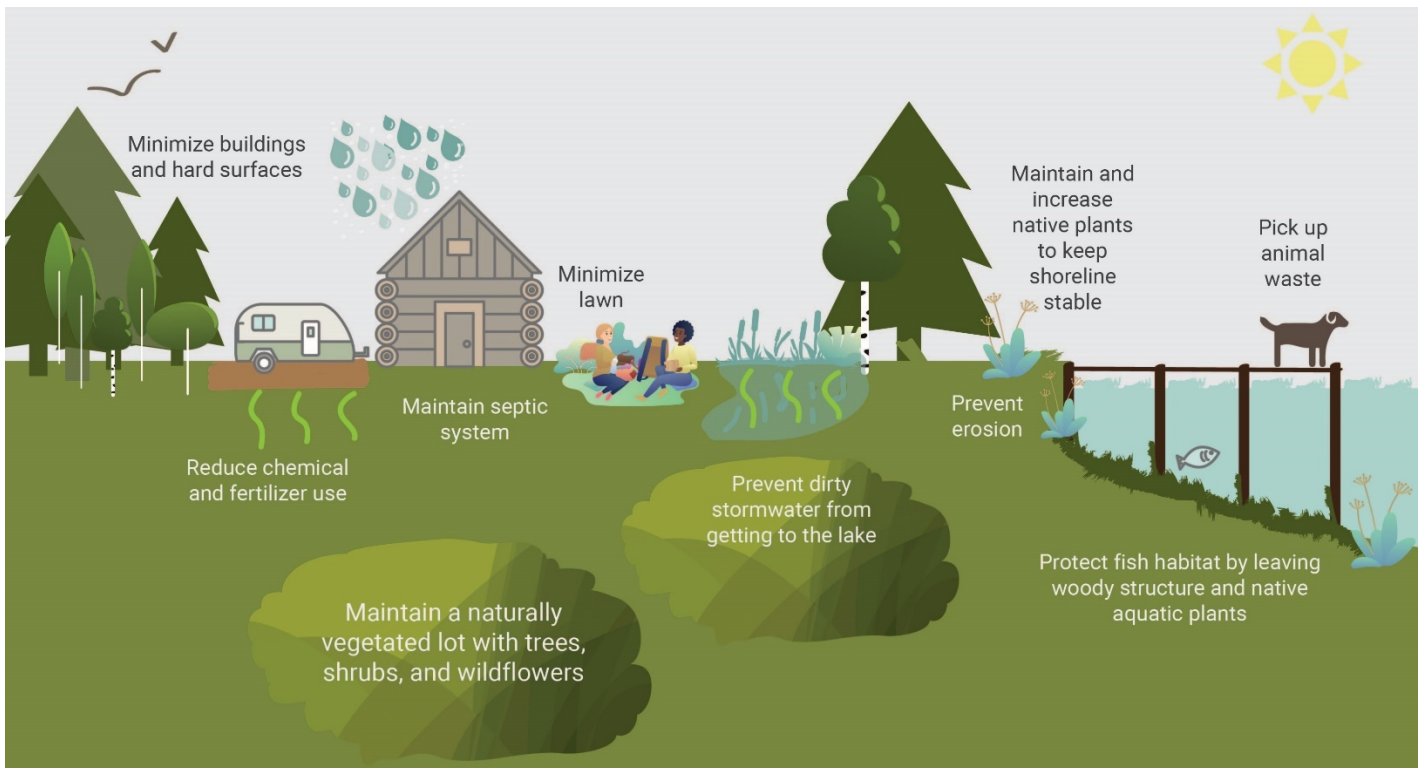


## Habitat

**Do you enjoy watching loons, bald eagles, turtles, butterflies, songbirds and other wildlife at the lake?** These animals depend on shoreline plants for nesting and cover, trees and forests for their homes, and native plants and flowers for pollinating. Keeping some of your yard natural enhances the habitat for these animals, ensuring their survival.



Be a good steward • Leave a legacy • Take care of your lake!



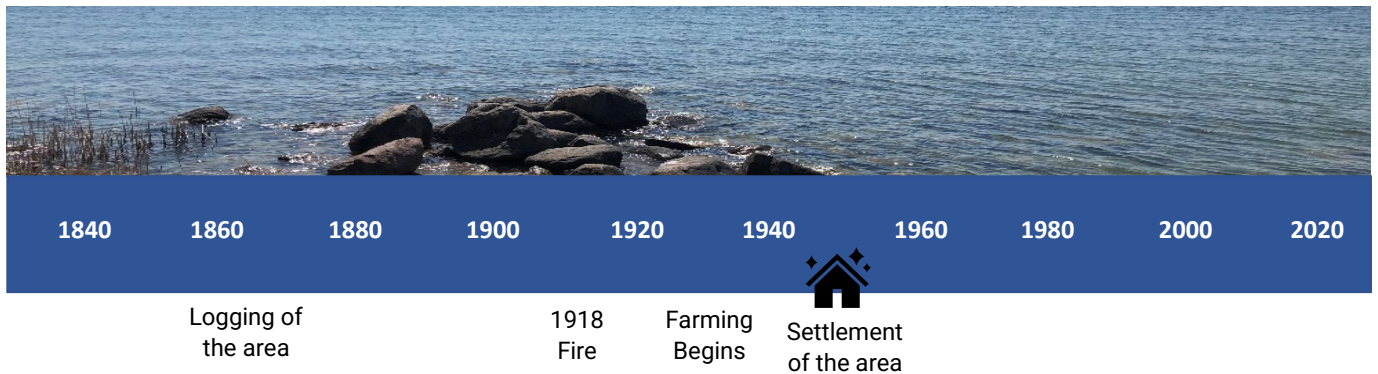
# Understanding Venoah Lake

Lake Characteristics	
Size	110 acres
Maximum Depth	25 feet
Shore Length	2.6 miles
Public Access	No

Venoah Lake is a small shallow lake located in Carlton County, two miles south of Carlton, MN. Development is limited to the Lake Venoah Community Office, a treatment center, set back from the lake and there is almost no disturbance along the shoreline.

## Venoah Lake Timeline

A lake reflects what has been done to it over time. Logging, shoreline development, roads, and fire all have the potential to affect the water quality of the lake. Below is a timeline of what has occurred around Venoah Lake over time.



We know that:

- ✦ Venoah Lake is an important wild rice lake as determined by the 1854 Treaty Authority and the Minnesota DNR.
- ✦ Because there is no public access, fishing and boating pressure is relatively low.
- ✦ Common fish include Northern pike, Bluegill, and Largemouth bass.

# What can we do?

Private landowners can help improve lake water quality and achieve watershed plan goals by implementing the following projects below. Technical and financial assistance is available to help with these projects through the local Soil and Water Conservation Districts. This assistance includes site visits, project design, plant advice, and cost share funding.



# Contacts

<b>Carlton SWCD</b> 218-384-3891 <a href="https://carltonswcd.org">https://carltonswcd.org</a>	<b>Pine SWCD</b> 320-216-4240 <a href="http://www.pineswcd.com">www.pineswcd.com</a>
<b>Carlton County</b> 218-384-9176 <a href="http://www.co.carlton.mn.us">www.co.carlton.mn.us</a>	<b>Pine County</b> 320-216-4220 <a href="http://www.co.pine.mn.us">www.co.pine.mn.us</a>
<b>Minnesota Land Trust</b> 877-MLT-LAND <a href="https://mnland.org">https://mnland.org</a>	<b>DNR Forests</b> <a href="http://www.dnr.state.mn.us/forests_tewardship/plan-writers.html">www.dnr.state.mn.us/forests_tewardship/plan-writers.html</a>

Watershed Plan Goal	Implementation Action	Minimum 10-year goal	Annual Goal	Where	Who
Land Protection	Develop a Forest Stewardship Plan (minimum 20-acre area).	1 forest plans	<b>1 every other year</b>	Map 1	Carlton SWCD, DNR, Private Foresters, Landowners
	Sign up for Sustainable Forest Incentive Act (SFIA) to receive payments to keep wooded areas undeveloped (minimum 20-acre area).	304 acres	<b>40 acres/year</b>	Map 1	Carlton SWCD, Landowners
	Permanently protect undeveloped land and shoreline with conservation easements.			Map 1	Carlton SWCD, DNR, MLT, Landowners

**Acronyms:** SWCD = Soil and Water Conservation District • MLT = Minnesota Land Trust • DNR = Department of Natural Resources

# Map 1. Forest and Protection Priorities

DNR Fisheries modeling has shown that protecting the land and forest cover around the lake protects the lake's water quality. This map shows the land area that drains towards the lake (Venoah Lake lakeshed). Areas that are green are the highest priority for increasing protection of the land. Landowners in these high priority areas can contact the SWCD for protection options such as Forest Stewardship Plans, the Sustainable Forest Incentive Act, and Conservation Easements.

