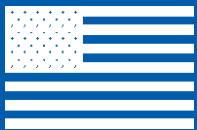




**Built in the
USA to last**

**UL, cUL Listed and CE Certified
Standard & hazardous locations**

Thermal Edge manufactures temperature control solutions designed to solve the enclosure cooling challenges that your industrial application poses for your electrical control panels. All products are designed and tested to meet your strict requirements for quality and durability. All products are equipped with time and energy saving features.



**Manufactured
in the
United States**

Thermal Edge enclosure air conditioners and heat exchangers are proudly made in Irving, Texas, U.S.A.



**Programmable
Digital
Controller**

Programmable set point and temperature controls, visible error and/or alarm messaging, and system protection.



**Energy
Efficient
Operation**

Thermal Edge enclosure air conditioners offer a condensation management system which lowers running amps.

**5
YEARS**

**Industry Leading
5-Year
Warranty**

Thermal Edge products are warranted to be free of defects in workmanship, materials and components

CS SERIES AIR CONDITIONERS

- Active Condensate Evaporation is standard
- Fits on a 7" or 10" deep enclosure
- Available in UL Types 12, 4, 4X
- Fully programmable digital controller with temperature and pressure monitors for a **smarter** air conditioner
- 115V, 230V, 48VDC in 1000 BTUH

- 1000 BTUH
- 2000 BTUH



NE SERIES AIR CONDITIONERS

- Active Condensate Evaporation is standard
- Fits on a 12" deep enclosure
- Available in UL Types 12, 4, 4X and Hazardous Environment applications
- Fully programmable digital controller with temperature and pressure monitors for a **smarter** air conditioner
- 115V, 230V, 460V, 48VDC in 4000 BTUH

- 1000 BTUH
- 1500 BTUH
- 2000 BTUH
- 3000 BTUH
- 4000 BTUH
- 5000 BTUH
- 6000 BTUH
- 8000 BTUH



HC SERIES AIR CONDITIONERS

- Active Condensate Evaporation is standard
- Available in UL Types 12, 4, 4X and Hazardous Environment applications
- Fully programmable digital controller with temperature and pressure monitors for a **smarter** air conditioner
- 115V, 230V, 460V

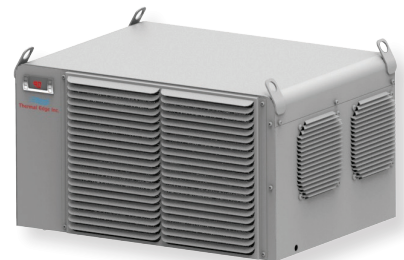
- 10,000 BTUH
- 12,000 BTUH
- 15,000 BTUH
- 20,000 BTUH



TM SERIES AIR CONDITIONERS

- Top Mounted Enclosure Air Conditioners
- Active Condensate Evaporation is standard
- Available in UL Types 12, 4, 4X
- Fully programmable digital controller with temperature and pressure monitors for a **smarter** air conditioner
- 115V, 230V, 460V

- 6000 BTUH
- 8000 BTUH



STANDARD ON EVERY THERMAL EDGE AIR CONDITIONER

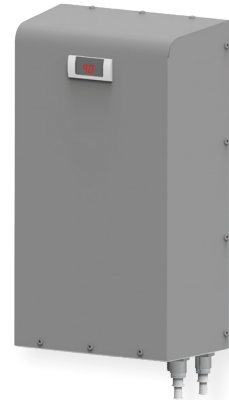
- Industry leading 5-Year Workmanship Warranty
- Energy saving condensate evaporation system
- Fully programmable digital controller
- Thermal expansion valve
- Full A/C product line available in UL Types 12, 4 & 4X
- UL Listed under Standard 484, file number SA32252
- Rigid chassis and seam welded shroud
- Proudly manufactured in the U.S.A.



**NO WATER
DRIPS FROM
THERMAL EDGE
ENCLOSURE AIR
CONDITIONERS**

AIR TO WATER HEAT EXCHANGERS

- Industry leading 5-Year Workmanship Warranty
- Closed-loop Design
- Filterless Maintenance Free
- Optional Digital Controller and Solenoid Water Valve
- UL Types 12, 4 & 4X
- 115 VAC, 230 VAC and 460 VAC
- UL Listed
- 3,690 BTUH
- 7,773 BTUH



AIR TO AIR HEAT EXCHANGERS

- Industry leading 5-Year Workmanship Warranty
- High efficiency heat pipe design
- 3 different chassis sizes
- Standard units include on/off switch
- UL Types 12, 4 & 4X
- 115VAC, 230VAC, 24VDC & 48VDC
- Needs no filter
- UL Listed for standard & hazardous location



PLASTIC AND METAL FILTERED FANS

80 CFM - 750 CFM in a variety of sizes

- Industry leading 5-Year Workmanship Warranty
- Available in injection molded plastic, 16 gauge powder coated steel and 304 stainless steel
- UL Types 1, 12 or 3R
- Washable filters
- Includes a filtered exhaust panel
- Comes assembled with template and gaskets



sales@omni2controls.com www-Omnit2controls.com

AIR CONDITIONER OPTIONS

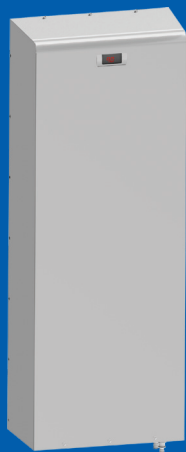
- Electrostatic Coil Coating to protect from corrosion caused by a salt or chemical environment
- Integrated Heat Packages to provide total temperature control for your enclosure, not just from the heat of summer but from the cold of winter
- Dry Contact Options to allow the use of alarms, lights and notifications
- External Heat Control to support use of an externally mounted heater in the enclosure
- 316 Stainless Steel for applications where 304 is not suitable
- Hazardous Location for Class 1, Division 2 Groups A, B, C & D applications
- Vibration Package allows for enclosure cooling on cranes, moving vehicles or other difficult locations
- 2" Deep Extended Filter Media for applications like flour, cement or coal when a standard filter will load too quickly
- Remote Controller Option to place our digital controller inside the electrical enclosure when the environment requires more security
- Redundant System Package for critical applications, when enclosure cooler failure is not an option. This system operates two air conditioners with specially programmed controllers that toggle the two units to operate them alternately to guarantee that your enclosure always stays at its required temperature and provide automatic backup
- The Universal Mounting Plate allows mounting the Thermal Edge Enclosure Air Conditioner onto an enclosure that formerly held a different air conditioner model

Enclosure Air Conditioners



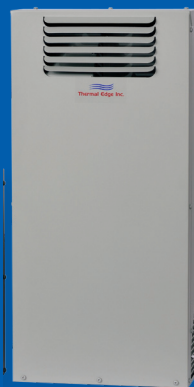
1,000 - 20,000 BTUH

Air to Water Heat Exchangers



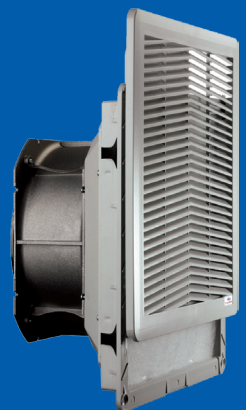
3,690 - 7,773 BTUH

Air to Air Heat Exchangers



12 - 40 Watts/°F

Plastic and Metal Filtered Fans



80 - 750 CFM



Thermal Edge air conditioners can be built to operate on the voltage and frequency available wherever you need them.

sales@omni2controls.com www-Omnit2controls.com



Brochure #5
2022-11-04