



Let our AI Bot Design your next  
**Electrical Enclosure**

AC DC HOTLINE LLC ⚡ OMNI2CONTROLS  
Master Distribution – USA MFG

AC DC HOTLINE LLC + OMNI2CONTROLS  
Master Distribution – USA MFG

This advertisement features a futuristic AI robot on the left, glowing with blue light. To its right are three white electrical enclosures of varying sizes. The background is a dark blue grid with glowing data points.



# TABLE OF CONTENTS

This guide highlights many of our enclosures and accessories, both old and new. Our enclosures are produced in Saginaw, Michigan with high quality U.S steel. For further information, visit us on our website at [saginawcontrol.com](http://saginawcontrol.com)

MADE IN USA



*Your Enclosure Source<sup>®</sup>*



# INTRODUCTION

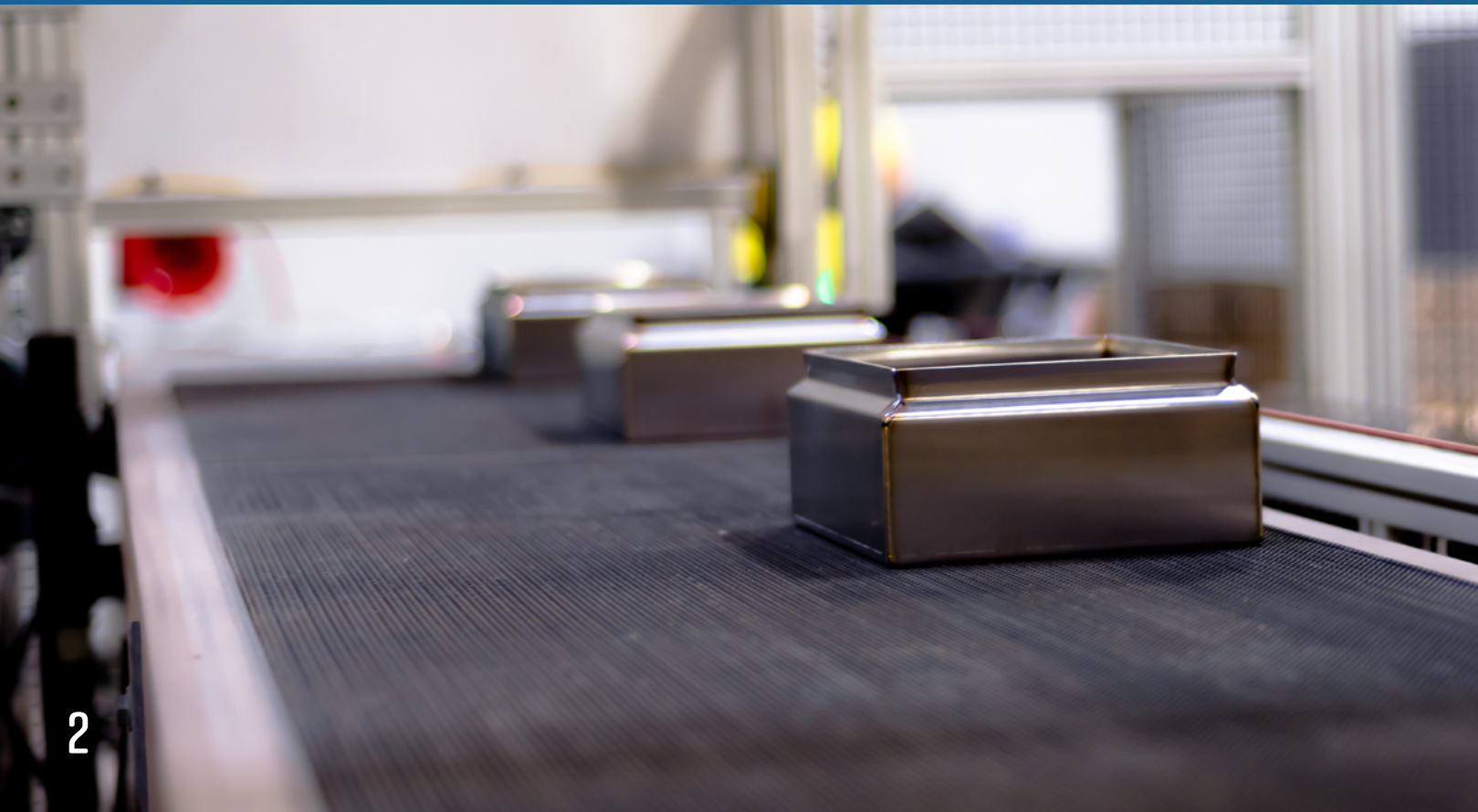
Since 1963, Saginaw Control & Engineering has been serving the electrical industry. We specialize in manufacturing both standard stock and custom designed enclosures as well as precision sheet metal fabrications. Our two manufacturing facilities, located in Saginaw, Michigan, use state-of-the-art equipment technology including the latest in automated forming, fiber-optic laser cutting/welding and seamless pour-in-place gasket. All products are protected with the highest quality powder finishes available in today's market.

SCE supplies top quality products built to accurate dimensions. From concept to completion, the SCE staff will work with you to satisfy your enclosure requirements. We specialize in standard stock electrical enclosures, including NEMA Types 1, 3, 3R, 4, 4X and 12. We can also customize any of our standard stock enclosures, featured right in this booklet, to meet your needs.

SCE has developed a considerable amount of enclosures over the years. Our growth as a provider has not only applied to our enclosures, but has also allowed us to expand into other markets to offer different material types. Our enclosures are categorized into three different material types: carbon steel, stainless steel and non-metallic.

The Design Considerations found on our website highlight the several similarities, differences and capabilities of the enclosures to help make a conscious decision to fulfill the customer's requirements.

To obtain more information about SCE and our products, please visit our website at <https://www.saginawcontrol.com/>. Our site includes new product information, a complete list of stock part numbers, drawings for stock parts that can be downloaded, list prices, installation manuals and other SCE news. Whether you require a standard stock enclosure or a custom built enclosure, SCE can be Your Enclosure Source®.





# OPERATOR SYSTEM ENCLOSURES

## CARBON & STAINLESS OPERATOR SYSTEMS

### OVERVIEW

Operator System enclosures are designed with human interaction in mind. Dependent on the specific Operator System enclosure, each enclosure allows the user to work with a computer, or even with their instruments thanks to their combined protection from dust, oil, dirt, and water. A key feature of Operator System enclosures are their accessibility; they either have die-cast handles, optional back paneling, or removable doors. Several enclosures can be mounted on equipment themselves, or compliment machinery. Below are corresponding industry standards, while the following page previews each enclosure, and offered finishes.

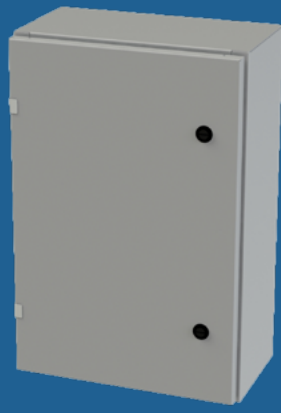
### INDUSTRY STANDARDS\*

\*Bolded numbers do not have an applicable CSA Type Number.

Operator System Enclosure	CARBON			STAINLESS		
	IS #	UL Listed & CSA Type #	IP #	IS #	UL Listed & CSA Type #	IP #
<a href="#">Enviroline® Series Junction (ELJ) Consoles</a>	4	3R, 4, 12	66	6	3R, 4, 4X, 12	66
<a href="#">Series 9 Consoles</a>	3	3R, 12	55	---	---	---
<a href="#">Series 14 Consoles</a>	3	3R, 12	55	---	---	---
<a href="#">Desk Consoles</a>	4	3R, 4, 12	66	3, 6	<b>3R</b> , 4, 4X, 12	66
<a href="#">Workstations</a>	1	12	55	1	12	55
<a href="#">Desktop Workstations</a>	1	12	55	5	4, 4X, 12	66
<a href="#">Sloped Top Workstations</a>	1	12	55	1	12	55
<a href="#">Human Machine Interface (HMI)</a>	4	3R, 4, 12	66	6	<b>3R</b> , 4, 4X, 12	66
<a href="#">Suspension Systems</a>	17	---	---	---	---	---

### OFFERED FINISHES/MATERIAL

Operator System Enclosure	CARBON			STAINLESS	
	ANSI-61 Gray	RAL 7035 Gray	White	Type 304	Type 316
<a href="#">Enviroline® Series Junction (ELJ) Consoles</a>	X			X	
<a href="#">Series 9 Consoles</a>	X				
<a href="#">Series 14 Consoles</a>	X				
<a href="#">Desk Consoles</a>	X			X	X
<a href="#">Workstations</a>		X		X	
<a href="#">Desktop Workstations</a>		X		X	
<a href="#">Sloped Top Workstations</a>			X	X	
<a href="#">Human Machine Interface (HMI)</a>		X		X	
<a href="#">Suspension Systems</a>		X		X	



# WALL-MOUNT ENCLOSURES

## OVERVIEW

Wall-Mount enclosures are constructed as they are described. As our most expansive group of enclosures, Wall-Mounts grant solutions to just as many problems. Whether it be for indoor or outdoor use, applications for these enclosures are immensely flexible to fit needs of simple pushbuttons to those of large electrical units. All units and accessories provide universal protection from oils, water, and dust. To the right are corresponding industry standards, while the following pages break down each Wall-Mount enclosure, and offered finishes.

## INDUSTRY STANDARDS\*

\*Bolted numbers do not have an applicable CSA Type Number.

Wall-Mount Enclosure	CARBON			STAINLESS		
	IS #	UL Listed & CSA Type #	IP #	IS #	UL Listed & CSA Type #	IP #
<a href="#">PB &amp; Hinged PB</a>	2	4, 12	66	5	4, 4X, 12	66
<a href="#">Slope Front PB</a>	2	4, 12	66	---	---	---
<a href="#">Enviroline® Series Junction (ELJ)</a>	4	3R, 4, 12	66	6	<b>3R</b> , 4, 4X, 12	66
<a href="#">Enviroline® Series Junction (ELJ) Trough</a>	4	3R, 4, 12	66	6	<b>3R</b> , 4, 4X, 12	66
<a href="#">Continuous Hinge Junction</a>	4	3R, 4, 12	66	6	<b>3R</b> , 4, 4X, 12	66
<a href="#">Screw Cover</a>	4	3R, 4, 12	66	---	---	---
<a href="#">EL Single-Door</a>	4	3R, 4, 12	66	6	<b>3R</b> , 4, 4X, 12	66
<a href="#">EL Single-Door w/ 3pt. Hardware</a>	4	3R, 4, 12	66	6	<b>3R</b> , 4, 4X, 12	66
<a href="#">EL Wall-Mount Two-Door w/ 3pt. Hardware</a>	4	3R, 4, 12	66	6	<b>3R</b> , 4, 4X, 12	66
<a href="#">Two-Door Wall-Mounted</a>	3	3R, 12	55	---	---	---
<a href="#">XEL Single-Door Disconnect</a>	4	3R, 4, 12	66	6	<b>3R</b> , 4, 4X, 12	66
<a href="#">NEMA 4 Single-Door</a>	4	3R, 4, 12	---	---	---	---
<a href="#">NEMA 1</a>	8	1	30	---	---	---
<a href="#">NEMA 1 Knockouts</a>	8	1	30	---	---	---
<a href="#">NEMA 1 Trough</a>	8	1	30	---	---	---
<a href="#">Vented Type 3R</a>	7	3R	32	---	---	---
<a href="#">Vented Type 3R Disconnect</a>	7	3R	32	---	---	---
<a href="#">Hinged Cover 3R</a>	7	3R	32	---	---	---
<a href="#">Screw Cover 3R</a>	7	3R	32	---	---	---
<a href="#">SS Sanitary Sloping Top Screw Cover</a>	---	---	---	25	<b>3R</b> , 4, 4X, 12	69
<a href="#">SS Sanitary Sloping Top Hinged</a>	---	---	---	25	<b>3R</b> , 4, 4X, 12	69
<a href="#">SS EL Sloping Top Single-Door</a>	---	---	---	6	<b>3R</b> , 4, 4X, 12	66
<a href="#">SS NEMA 4X Single-Door</a>	---	---	---	6	<b>3R</b> , 4, 4X, 12	66
<a href="#">SS XEL Sloping Top Disconnect</a>	---	---	---	6	<b>3R</b> , 4, 4X, 12	66

## CARBON WALL-MOUNTS

## CARBON WALL-MOUNT FINISHES

Wall-Mount Enclosure	ANSI-61 Gray	Other	Wall-Mount Enclosure	ANSI-61 Gray	Other
<a href="#">Slope Front PB</a>	X		<a href="#">NEMA 1 NK</a>		X
<a href="#">Screw Cover</a>	X		<a href="#">NEMA 1 Trough</a>	X	
<a href="#">Two Door Wall-Mounted</a>	X		<a href="#">Vented Type 3R</a>		X
<a href="#">XEL Single-Door Disconnect</a>	X	X	<a href="#">Vented Type 3R Disconnect</a>		X
<a href="#">NEMA 4 Single-Door</a>	X		<a href="#">Hinged Cover 3R</a>	X	
<a href="#">NEMA 1</a>	X		<a href="#">Screw Cover 3R</a>	X	

## STAINLESS WALL-MOUNTS

## CARBON & STAINLESS WALL-MOUNTS

## STAINLESS WALL-MOUNT MATERIALS

Wall-Mount Enclosure	Type 304	Type 316
<a href="#">SS Sanitary Sloping Top Screw Cover</a>	X	
<a href="#">SS Sanitary Sloping Top Hinged</a>	X	
<a href="#">SS EL Sloping Top Single-Door</a>	X	
<a href="#">SS NEMA 4X Single-Door</a>	X	X
<a href="#">SS XEL Sloping Top Single-Door Disconnect</a>	X	

## OFFERED FINISHES/MATERIAL

Wall-Mount Enclosure	CARBON			STAINLESS	
	ANSI-61 Gray	RAL-7035 Gray	Other	Type 304	Type 316
<a href="#">PB &amp; Hinged PB</a>	X		X	X	X
<a href="#">Enviroline® Series Junction (ELJ)</a>	X	X		X	X
<a href="#">Enviroline® Series Junction (ELJ) Trough</a>	X			X	
<a href="#">Continuous Hinge Junction</a>	X			X	X
<a href="#">EL Single-Door</a>	X	X		X	X
<a href="#">EL Single-Door w/3pt. Hardware</a>	X			X	X
<a href="#">EL Wall-Mount Two-Door w/3pt. Hardware</a>	X			X	



# FREE-STANDING & FLOOR-MOUNTED ENCLOSURES

## OVERVIEW

Free-Standing & Floor-Mounted Enclosures are most commonly applied for outdoor use. Many of these multi-door enclosures include an interlock, or custom lever assemblies, found on the ceiling of their housings. Along with an expansive amount of accessories, these enclosures have Enviroline®, multi-door, and heavy duty versions. All units and accessories provide universal protection from oils, water, and dust. Below are corresponding industry standards, while the following pages highlight each enclosure and offered finishes.

## INDUSTRY STANDARDS\*

\*Bolded numbers do not have an applicable CSA Type Number.

Free-Standing or Floor-Mounted Enclosure	CARBON			STAINLESS		
	IS #	UL Listed & CSA Type #	IP #	IS #	UL Listed & CSA Type #	IP #
<a href="#">Two-Door EL w/3pt. Hardware</a>	4	3R, 4, 12	66	6	<b>3R, 4, 4X, 12</b>	66
<a href="#">Overlapping Two-Door</a>	3	3R, 12	55	---	----	---
<a href="#">Free-Standing &amp; EL Free-Standing</a>	3, 4	3R, 4, 12	55, 66	3, 6	3R, 4, 4X, 12	66
<a href="#">Multi-Door</a>	3	3R, 12	55	---	----	---
<a href="#">Multi-Door Disconnects</a>	3, 4	3R, 4, 12	55, 66	---	----	---
<a href="#">Two-Door XEL Disconnect</a>	3, 4	3R, 4, 12	55, 66	6	<b>3R, 4, 4X, 12</b>	66
<a href="#">One-Six Door Heavy Duty Disconnects (XM)</a>	3, 4	3R, 4, 12	55, 66	6	<b>3R, 4, 4X, 12</b>	66
<a href="#">One-Three Door Heavy Duty External Disconnects (XD)</a>	3, 4	3R, 4, 12	55, 66	3, 6	3R, 4, 4X, 12	66
<a href="#">One-Six Door Rotary External Disconnect (XR)</a>	3, 4	3R, 4, 12	55, 66	---	----	---
<a href="#">SS Two-Door EL Sloping Top</a>	---	----	---	6	<b>3R, 4, 4X, 12</b>	66
<a href="#">SS Two-Door XEL Sloping Top Disconnect</a>	---	----	---	6	<b>3R, 4, 4X, 12</b>	66

Free-Standing or Floor-Mounted Enclosure	ANSI-61 Gray	Other
<a href="#">Overlapping Two-Door</a>	X	
<a href="#">Multi-Door Three-Five Door</a>	X	
<a href="#">Multi-Door Disconnects</a>	X	
<a href="#">One-Six Door Rotary External Disconnects (XR)</a>	X	

## STAINLESS FREE-STANDING & FLOOR-MOUNTS

## STAINLESS FREE-STANDING & FLOOR-MOUNT MATERIALS

Free-Standing or Floor-Mounted Enclosure	Type 304	Type 316
<a href="#">SS Two-Door EL Sloping Top</a>	X	
<a href="#">SS Two-Door XEL Sloping Top Disconnect</a>	X	

## CARBON & STAINLESS FREE-STANDING & FLOOR-MOUNTS

## OFFERED FINISHES AND MATERIALS

Free-Standing or Floor-Mounted Enclosure	CARBON	STAINLESS	
	ANSI-61 Gray	Type 304	Type 316
<a href="#">Two-Door EL w/ 3pt. Hardware</a>	X	X	X
<a href="#">Free-Standing &amp; EL Free-Standing</a>	X	X	X
<a href="#">Two-Door XEL Disconnect</a>	X	X	X
<a href="#">One-Six Door Heavy Duty Disconnects (XM)</a>	X	X	
<a href="#">One-Three Door Heavy Duty External Disconnects (XD)</a>	X	X	



# MODULAR ENCLOSURES

## OVERVIEW

Modular Enclosures revolve around a system of parts and accessories, yet provide limitless, collective applications. As the basis for their design and construction, modular units work around each other for users to interact with them and the equipment they hold. Any class of these enclosures can be bolted together to a desired multiple door arrangement, and can operate under an interlock system of up to ten doors. All enclosures provide comprehensive protection from dust, dirt, water, and oils. Below are corresponding industry standards, while the following page highlights each enclosure and its offered finishes.

## INDUSTRY STANDARDS

Modular Enclosure	IS #	UL Listed & CSA Type #	IP #
<a href="#">Single-Door Modular &amp; Modular Disconnect, Left Side Open</a>	3	3R, 12	55
<a href="#">Two-Door Modular &amp; Modular Disconnect, Left Side Open</a>	3	3R, 12	55
<a href="#">Single-Door Modular, Both Sides Open</a>	3	3R, 12	55
<a href="#">Two-Door Modular, Both Sides Open</a>	3	3R, 12	55
<a href="#">Single-Door Industrial Modular Systems(IMS)</a>	3	3R, 12	55
<a href="#">Two-Door Industrial Modular Systems(IMS)</a>	3	3R, 12	55
<a href="#">Single-Door IMS Disconnects</a>	3	3R, 12	55
<a href="#">Two-Door IMS Disconnects</a>	3	3R, 12	55

## CARBON MODULAR FINISHES

Modular Enclosure	ANSI-61 Gray	RAL-7035 Gray
<a href="#">Single-Door Modular &amp; Modular Disconnect, Left Side Open</a>	X	
<a href="#">Two-Door Modular &amp; Modular Disconnect, Left Side Open</a>	X	
<a href="#">Single-Door Modular, Both Sides Open</a>	X	
<a href="#">Two-Door Modular, Both Sides Open</a>	X	
<a href="#">Single-Door Industrial Modular Systems (IMS)</a>		X
<a href="#">Two-Door Industrial Modular Systems (IMS)</a>		X
<a href="#">Single-Door IMS Disconnects</a>		X
<a href="#">Two-Door IMS Disconnects</a>		X



# NON-METALLIC ENCLOSURES

## OVERVIEW

Non-Metallic Enclosures are made to deliver protection for areas of the extremes; whether that be corrosion, ultraviolet rays, or consistently damp conditions. These enclosures are either created with fiberglass that is reinforced with compression molded polyester, or an impact-resistant polycarbonate compound. Demonstrating effective flexibility to allow the user the options to have windowed or windowless enclosures, oil resistant or continuous memory gaskets, and pre-molded mounting strips or multiple bosses, these enclosures have it all to meet your requirements. Below are corresponding industry standards, while the following page highlights each enclosure and material type.

## INDUSTRY STANDARDS\*

\*Bolded numbers do not have an applicable CSA Type Number.

Non-Metallic Enclosure	IS #	UL Listed & CSA Type #	IP #
PB (Fiberglass)	5	4, 4X, 12	66
Screw Cover Junction (Fiberglass)	5	4, 4X, 12	66
Wall-Mount (Fiberglass)	5	4, 4X, 12	66
Junction (Fiberglass)	5	4, 4X, 12	66
Junction w/ Window (Fiberglass)	5	4, 4X, 12	66
Polycarbonate	6	<b>3R</b> , 4, 4X, 12	66
Polycarbonate w/ Window	6	<b>3R</b> , 4, 4X, 12	66
Polycarbonate PB	6	<b>3R</b> , 4, 4X, 12	66
Polycarbonate Screw Cover	6	<b>3R</b> , 4, 4X, 12	66

## NON-METALLIC MATERIALS

Non-Metallic Enclosure	Light Gray Fiberglass	RAL-7035 Polycarbonate
PB (Fiberglass)	X	
Screw Cover Junction (Fiberglass)	X	
Wall-Mount (Fiberglass)	X	
Junction (Fiberglass)	X	
Junction w/ Window (Fiberglass)	X	
Polycarbonate		X
Polycarbonate w/ Window		X
Polycarbonate PB		X
Polycarbonate Screw Cover		X



# THERMAL MANAGEMENT

## OVERVIEW

The Thermal Management class of accessories offers plenty of reliable options to effectively provide climate control to a workspace. Utilized for indoor and outdoor application, the Enviro-Therm® line of air conditioners, and thermoelectric coolers are designed with an internal closed loop system to provide protection from dust, oils, and water. Along with many replacement and additional accessories, Thermal Management accessories offer an array of possibilities to improve the quality work..



# ACCESSORIES

## OVERVIEW

Accessories offer plenty of reliable options to provide additional components. From a folding shelf for extra workspace to a hinged window kit to view without opening the enclosure. Accessories offer several options to customize an enclosure. Service parts are also available such as replacement filters, keys, hinges and touchup paint.



# CUSTOM STANDARD ENCLOSURES (CSE)

## OVERVIEW

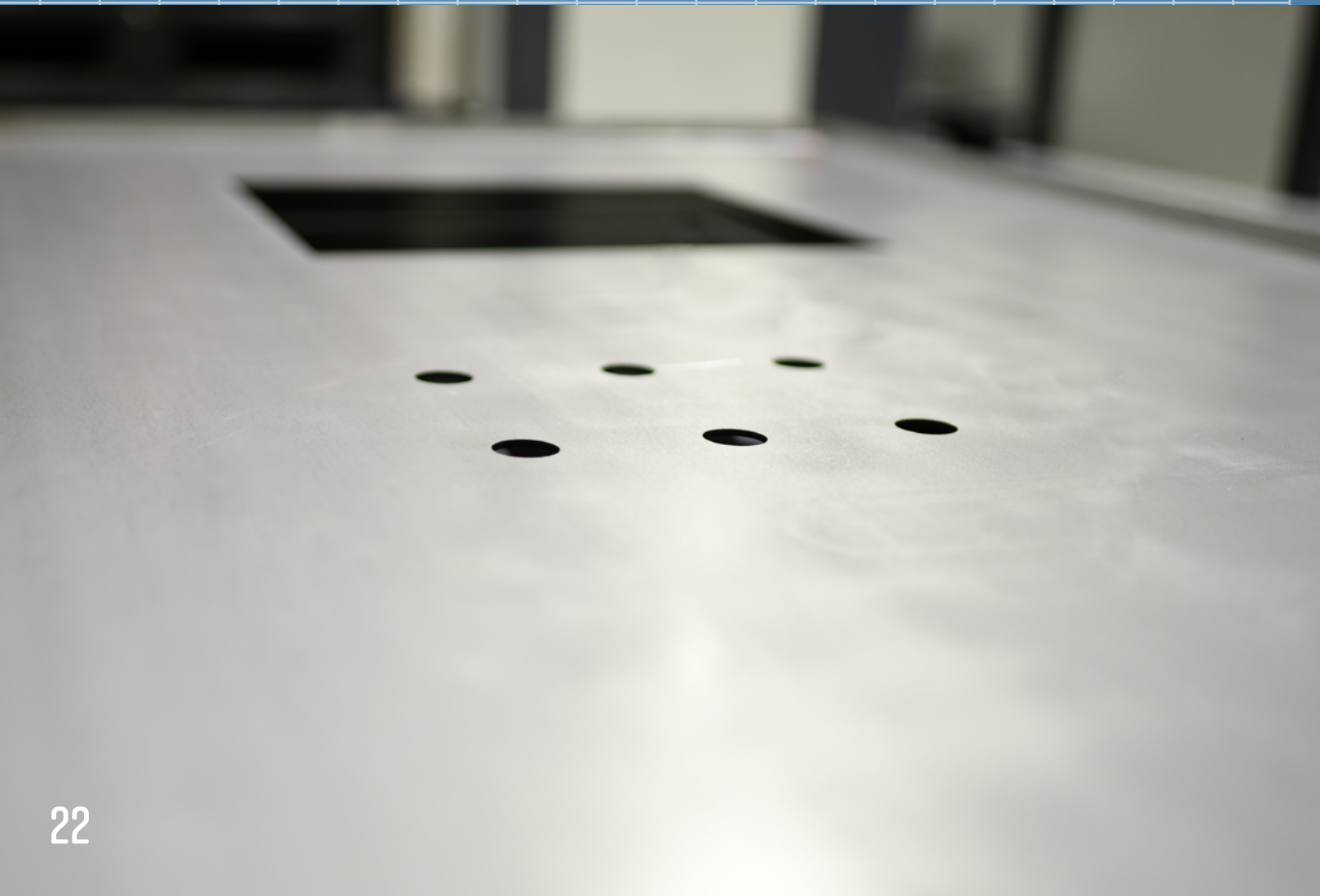
SCE offers a great range of custom standard enclosures to further fit your requirements. This option involves the same design and manufacturing process as stock enclosures but includes your input. The CSE program still grants a fast turnaround time in addition to getting that extra custom touch. The following pages break down features of the program, the ordering process, and the offered powder coat finishes for all our steel enclosures.

## CSE PROGRAM FEATURES

- The ability to apply holes and cutouts to meet your requirements.
- A required material selection for the work environment and specifications.
- Color choice of powder coat finish.
- Personal assistance from our experienced design team.
- A manufacturing guarantee to the highest quality standards.

## CUSTOM OFFERED FINISHES

Before selecting a finish, you must select a proper enclosure material required for the environment or specification. Custom offered finishes apply to carbon steel enclosures, and Type 304 or 316 stainless steel enclosures. On the following pages, all current powder coat finishes are presented. Please note that these colors are close representations with standard print/monitor settings applied and are not intended to match. Color charts may also vary by manufacturer.



# CUSTOM OFFERED FINISHES

**Medical White** White/Full Gloss 125827  
**GMW05** White/Low Gloss 125224  
**GMW06** White/Full Gloss 114407  
**PCT89104** White/Sand Texture 120396  
**P009-WH14** White/Full Gloss 125303  
**SCE-05** White/Full Gloss 101045  
**RAL 9001** White/Full Gloss 102961  
**RAL 9003** White/Full Gloss 125827

**RAL 1001** Beige/Cream - Full Gloss - 102973  
**RAL 1013** Beige/Cream - Full Gloss - 101047  
**RAL 1015** Beige/Cream - Full Gloss - 102920  
**Pantone 288C** Blue/Sand Texture 103329  
**Zircon** Blue/Sand Texture 125827  
**NB** Blue/Low Gloss 103034  
**FED STD 15180** Blue/Full Gloss 114986  
**FED STD 25230** Blue/Full Gloss 103404

**RAL 9010** White/Full Gloss 102959  
**AS4 115561** Gray/Low Gloss 115561  
**Steel It** Gray/Low Gloss 103094  
**Light Platinum** Gray/Sand Texture 125215  
**Platinum Smooth** Gray/Low Gloss 127271  
**Zinc Rich Primer SW 2115** Gray/Low Gloss 115250  
**RAL 9009** Gray/Low Gloss 115816  
**SCE-09** Gray/Low Gloss 101039

**RAL 5000** Blue/Full Gloss 115938  
**RAL 5002** Blue/Full Gloss 116053  
**RAL 5005** Blue/Full Gloss 115397  
**RAL 5007** Blue/Full Gloss 118026  
**RAL 5009** Blue/Full Gloss 102939  
**RAL 5010** Blue/Full Gloss 102943  
**RAL 5012** Blue/Full Gloss 114978  
**RAL 5014** Blue/Full Gloss 102940

**Stardust** Silver/Low Gloss 103408  
**RAL 9011** Black/Sand Texture 101065  
**ANSI 70** Gray/Full Gloss 112497  
**RAL 7000** Gray/Full Gloss 115783  
**RAL 7030** Gray/Full Gloss 114234  
**RAL 7032** Gray/Full Gloss 102394  
**RAL 7032** Gray/River Texture 102969  
**RAL 7035** Gray/Full Gloss 102962

**RAL 5015** Blue/River Texture 102945  
**RAL 5015** Blue/Full Gloss 105271  
**RAL 5017** Blue/Full Gloss 112112  
**RAL 5019** Blue/Full Gloss 106630  
**RAL 5024** Blue/Full Gloss 102941  
**Vista Green** Green/Full Gloss 125827  
**Paletex** Green Hybrid - Low Gloss - 103393  
**Munsell 10GY9/1** Green/Low Gloss 107583

**RAL 7035** Gray/River Full Gloss - 121664  
**RAL 7035** Gray/River Low Gloss - 102967  
**RAL 7036** Gray/Full Gloss 102946  
**RAL 7044** Gray/Full Gloss 102937  
**RAL 7045** Gray/Full Gloss 108106  
**RAL 9002** Gray/Full Gloss 102958  
**Sand Dollar** Beige/Cream - River Texture - 128366  
**Taupe** Beige/Cream - Sand Texture - 101048

**RAL 6001** Green/Full Gloss 118406  
**RAL 6005** Green/Full Gloss 115919  
**RAL 6021** Green/Full Gloss 116185  
**RAL 6027** Green/Full Gloss 117244  
**NPVP 3.75YR6/14** Orange/Full Gloss 127701  
**RAL 2004** Orange/Full Gloss 115609  
**RAL 8023** Orange/Full Gloss 103045  
**RAL 1018** Yellow/Full Gloss 102923

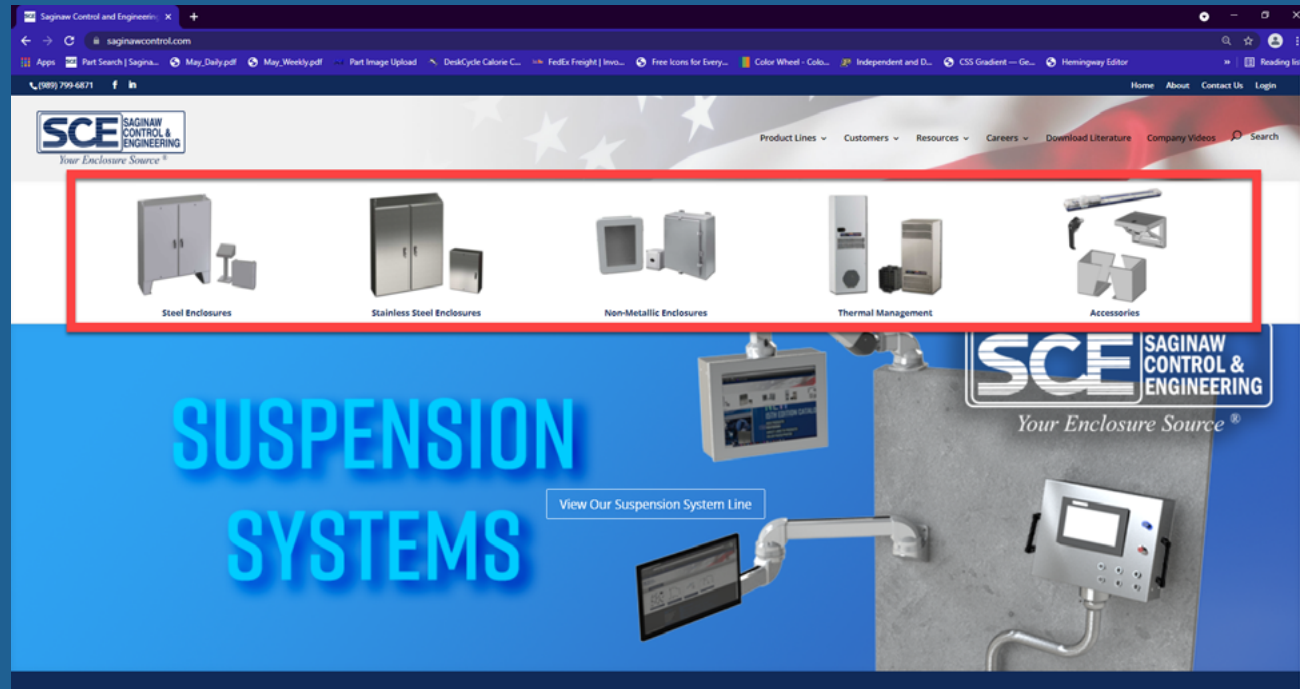
**SMS** Beige/Cream - Low Gloss - 103397  
**Pantone 4535C** Beige/Cream - Low Gloss - 114280  
**BFS** Beige/Cream - Full Gloss - 116201  
**Munsell 10Y9/1** Beige/Cream - Full Gloss - 107622  
**Munsell 5Y8.25/1.5** Beige/Cream - Full Gloss 114083

**BN040** Brown/Low Gloss 103413  
**SW2076** Brown/Low Gloss 113829  
**Desert Tan Flat** Tan/Low Gloss 127027  
**RAL 3000** Red/Full Gloss 115875  
**RAL 3003** Red/Full Gloss 118450

# HOW TO ORDER

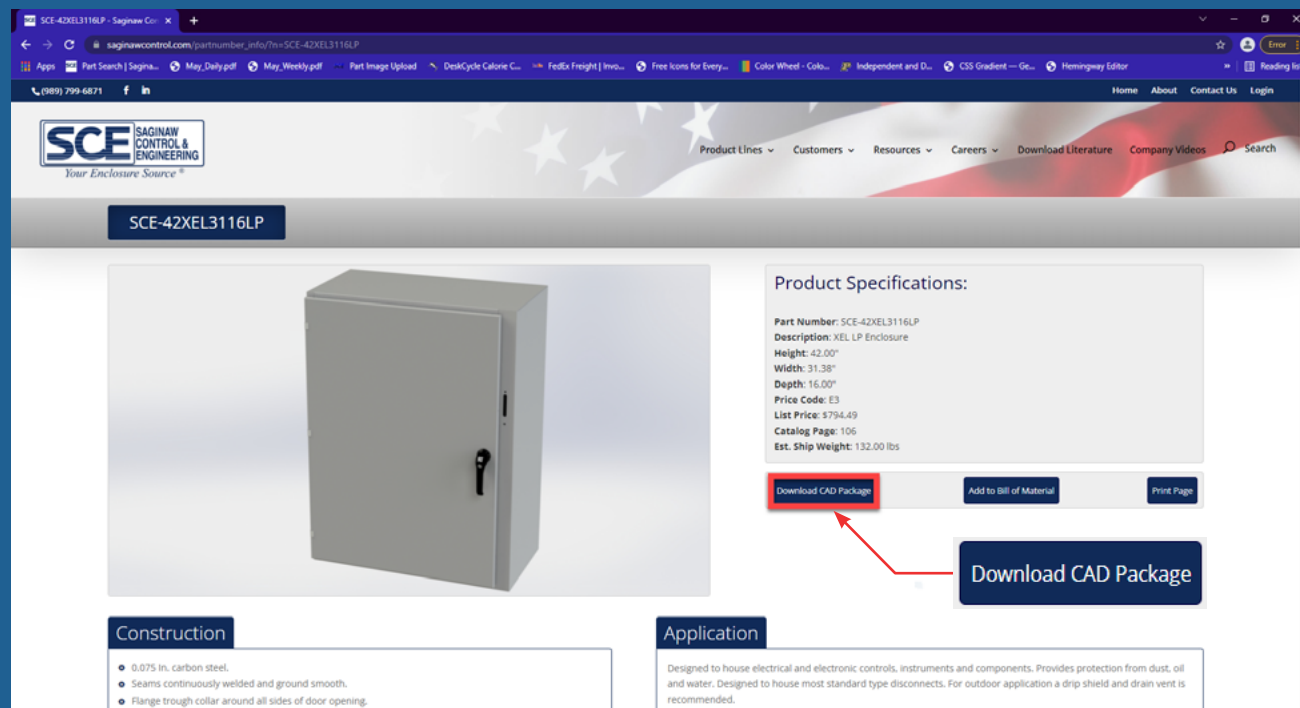
·First, visit our website at: <https://www.saginawcontrol.com/>.

·From here, choose an enclosure product line, pictured at the top of the home page (outlined in red).

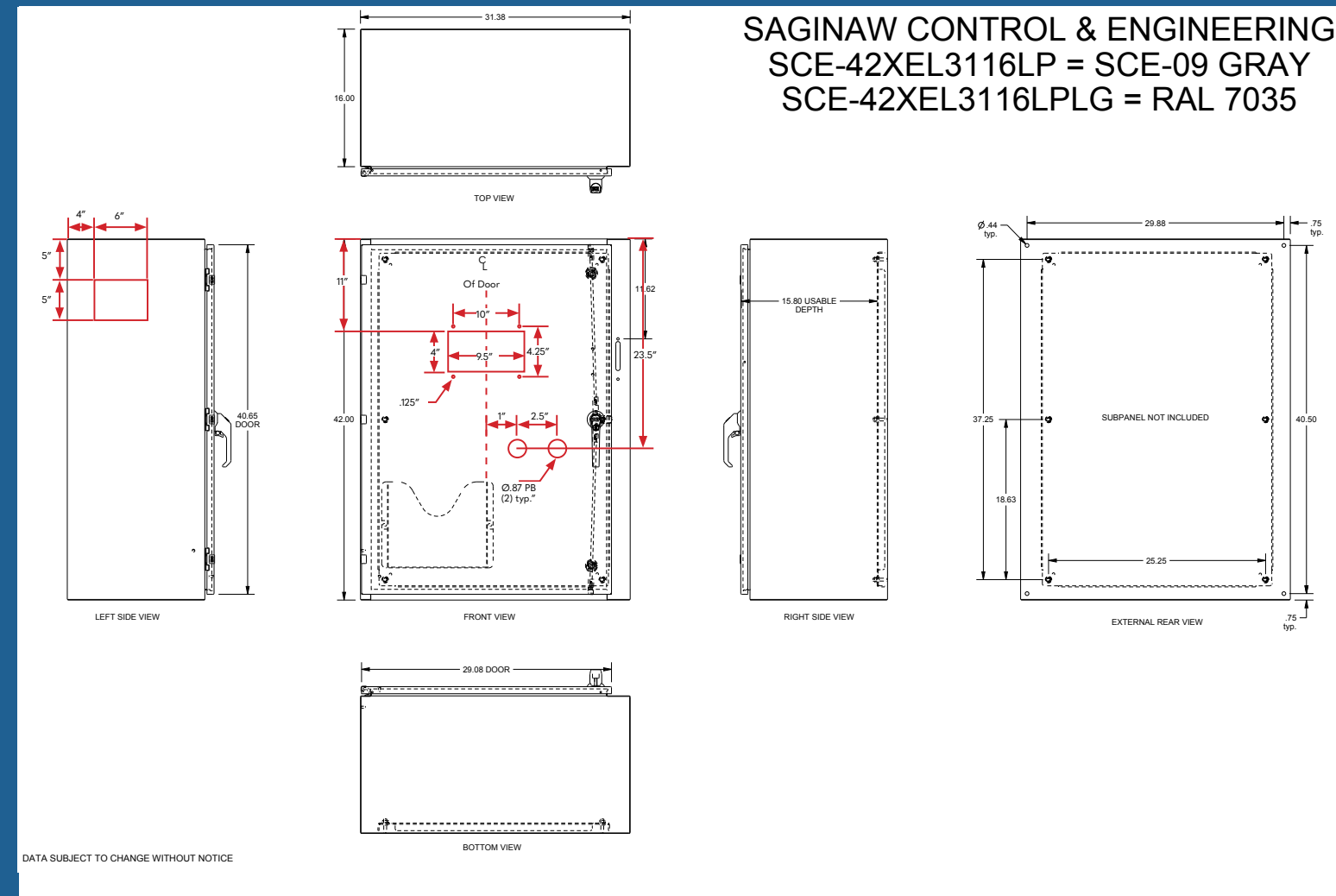


·Once an enclosure is chosen, view its Product Specification list.

·Download the Product's CAD Package, referenced below.



·Add the necessary holes, cutouts and dimension.



·In order to be opened by our design team, save the drawings electronically as a **.dwg** or **.dxf** file. (PDFs are also helpful for quick viewing).

·Resubmit your drawings through email to **CSE@SaginawControl.com**. Also include the quantity required per shipment.

·Look for a quote via email within one to two business days. Our teams will review your files, permitted they are setup accordingly.

# OUR MANUFACTURING LOCATIONS



OUR DISTRIBUTION CENTERS