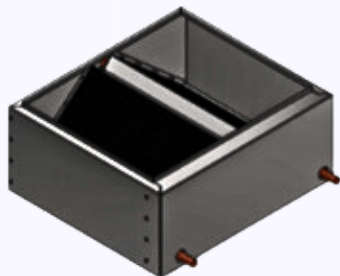


HPX High Performance Series Cased Hot Water Coils



- Built to ARI 410 Certification
- Galvanized Steel 18 Ga. frame
- Aluminum Fins, .0055 Thickness
- Copper Tubing, 3/8" w/ .012 wall
- BTU outputs from 40,000 to 140,000
- Horizontal/Vertical Installation
- Full one year warranty
- Call for other performance criteria ratings

Dimensional Data

H2O COIL MODEL #	Width"	Height"	Depth"	Supply"	Connection"
HPX-2-1425	14 1/4	10	22	12 1/4 x 19	7/8 OD
HPX-2-1750	17 1/2	10	22	15 1/2 x 19	7/8 OD
HPX-2-1850	18 1/2	10	21	16 1/2 x 18	7/8 OD
HPX-2-1975	19 3/4	10	22	17 3/4 x 19	7/8 OD
HPX-2-2125	21 1/4	10	22	19 1/4 x 19	7/8 OD
HPX-2-2250	22 1/2	10	22	20 1/2 x 19	7/8 OD
HPX-2-2350	23 1/2	10	21	21 1/2 x 18	7/8 OD
HPX-2-2450	24 1/2	10	22	22 1/2 x 19	7/8 OD
** HPX-2-2650	26 1/2	10	21	24 1/2 x 18	7/8 OD

Performance Data

H2O #	CFM	APD	GPM	WPD	BTU 180 EWT
HPX-2-1425	800	.10	6	3.2	61,400
HPX-2-1750	1200	.15	6	2.4	81,800
HPX-2-1850	1200	.16	8	2.9	83,300
HPX-2-1975	1400	.20	6	2.4	88,600
HPX-2-2125	1600	.21	7	3.2	100,800
HPX-2-2250	1800	.23	7	2.4	109,000
HPX-2-2350-T	1600	.19	8	4	105,100
HPX-2-2450	2000	.24	7	2.4	118,000
** HPX-2-2650-T	2000	.23	8	3.7	121,500

IN STOCK

All Coils Ratings based on 55 degree EAT
 EWT Correction Factors: .835 @ 160°, .670 @140°, .507 @ 120°
 ** While quantities last