

WASHINGTON
NATIONAL OPERA

2026/27
SEASON

Timothy O'Leary
GENERAL DIRECTOR AND CEO

Francesca Zambello
ARTISTIC DIRECTOR

Robert Spano
MUSIC DIRECTOR

BOLD.
FORWARD.
TOGETHER.



SCOTT SUCHMAN

MADAMA BUTTERFLY | NIXON IN CHINA
ODYSSEY | O'KEEFFE: KISS THE SKY
MOZART'S IDOMENEO: A TROJAN TALE | LA TRAVIATA



SCOTT SUCHMAN

WASHINGTON
NATIONAL
OPERA



“The company’s success in supporting our rich cultural fabric should be celebrated.”

The New York Times

Dear Friends:

As we step into our future as an independent company, three words have guided us: Bold. Forward. Together.

BOLD. We invite you to embark on a season unlike any in our history—one defined by artistic ambition, fearless creativity, and extraordinary talent. From beloved classics by Mozart, Verdi, and Puccini to groundbreaking contemporary works by John Adams and a world premiere opera-ballet by Christopher Tin and Kelley Rourke, this season is filled with productions that are immersive, daring, and emotionally resonant. We welcome world-class artists like Renée Fleming, Thomas Hampson, Christine Goerke, Isabel Leonard and more, presenting each work in a venue chosen to deepen the experience—from grand theaters to our completely new theater concept, the Revolutionary Stage. And this bold momentum continues beyond the coming year: we’re thrilled to announce that the previously cancelled *Fellow Travelers* has been rescheduled for the 2027–2028 season.

FORWARD. The past year brought an unexpected season of transition and reinvention as we celebrate our 70th anniversary as a company. But while change shaped our path, it does not define our future. This season embraces discovery: new venues, new ideas, and new opportunities to welcome audiences into the power of live performance. This year, as America marks 250 years, we also celebrate the spirit of creative freedom that has long shaped our country’s cultural life. As President John F. Kennedy once said, “Change is the law of life. And those who look only to the past or the present are certain to miss the future.”

TOGETHER. None of this would be possible without you. To every friend who has stood beside us on this journey: thank you. The support we have received as we chart our future as an independent company has been deeply moving. We hope you will join us on this creative adventure as we boldly move forward together!

Warm regards,

Timothy O’Leary
GENERAL DIRECTOR AND CEO

Francesca Zambello
ARTISTIC DIRECTOR

NEW PRODUCTION

Madama Butterfly

PUCCINI | ILLICA & GIACOSA

One of opera’s most powerful stories of love, hope and heartbreak set in turn-of-the-century Nagasaki.

COMPANY PREMIERE

Nixon in China

ADAMS | GOODMAN

A riveting, reimagined production about the historic clash between global titans in “the week that changed the world.”

COMPANY PREMIERE | SUBSCRIPTION ADD-ON

Special Concert: *We the People*

Featuring Renée Fleming, Thomas Hampson, and Marian Anderson Award Winner Amber Monroe.

SUBSCRIPTION ADD-ON

Odyssey

MOORE | ROURKE

A family-friendly, fantastical adventure with Odysseus, inspired by Rick Riordan’s beloved Percy Jackson children’s books.

SUBSCRIPTION ADD-ON

American Opera Initiative:

WOLF | LAMBS

MARLOR | BIERMAN

WORLD PREMIERE

O’Keeffe: Kiss the Sky

TIN | ROURKE

Groundbreaking new ballet-opera brings the life and vision of Georgia O’Keeffe to the stage in a vivid fusion of music, movement, and theater.

NEW PRODUCTION

Mozart’s Idomeneo:

A Trojan Tale

MOZART | VARESCO

Mozart’s magnificent score meets Francesca Zambello and Kelley Rourke’s re-imagining of this a powerful story of war, sacrifice, and family.

WNO REVIVAL

La traviata

VERDI | PIAVE

Verdi’s love story confronts societal constraints, ending in tragedy and loss.

THANKS TO OUR SEASON SPONSORS

GENERAL DYNAMICS

Jacqueline Badger Mars

Dallas Morse Coors

Join the Movement

Washington National Opera enters the 2026/27 season as a fully independent company—bold in vision, forward in spirit, and powered by you.

Join us as we transform the opera experience across the Washington, D.C. region—from a reimagined DAR Constitution Hall, to Harman Hall, to Arena Stage at the Mead Center for American Theater, to The Music Center at Strathmore—each space designed to bring you closer to the art than ever before.

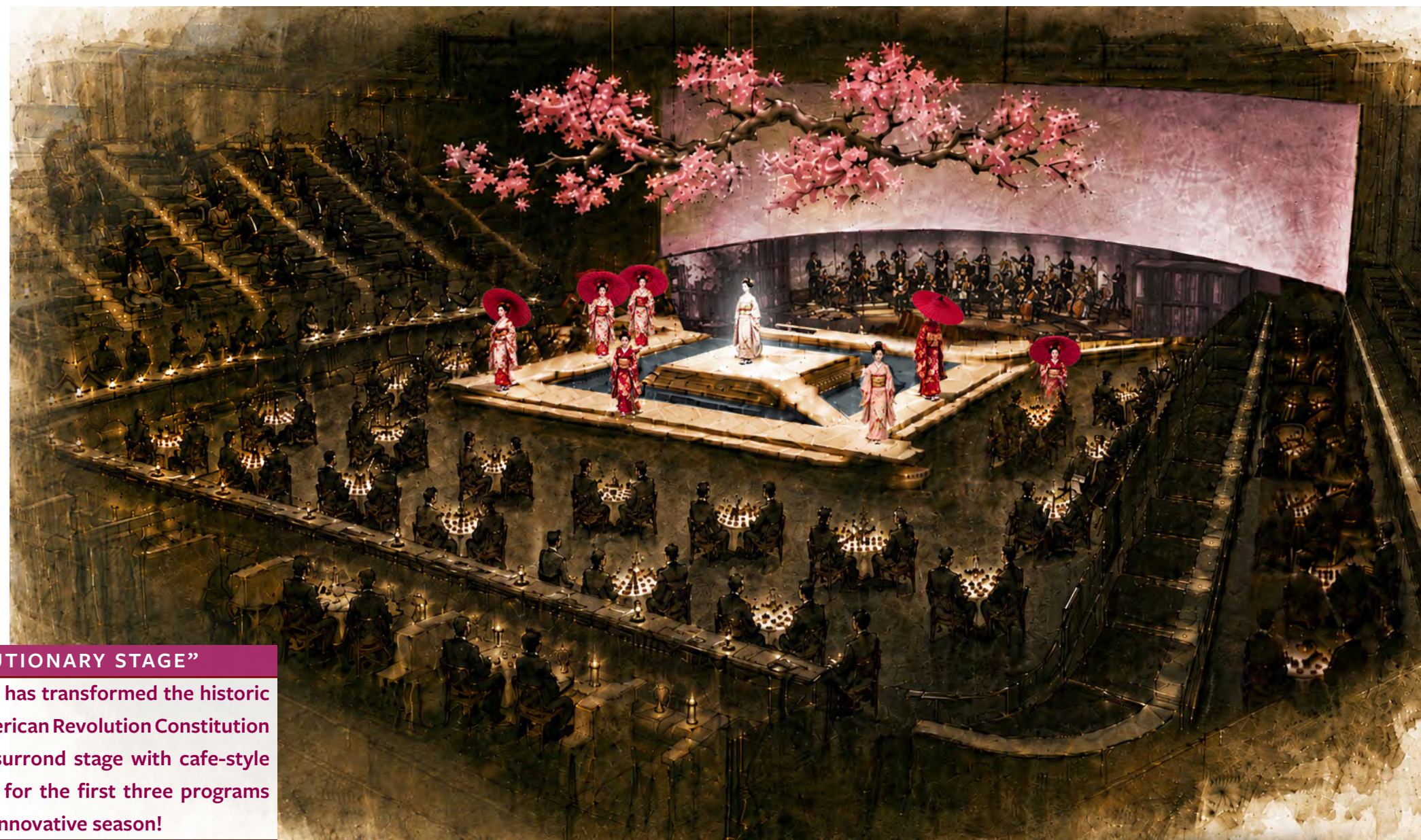
At DAR, discover opera in a newly immersive 270-degree thrust setting, where orchestra and action surround you, and the story unfolds all around. Sip, savor, and experience opera as a living, social, unforgettable event.

**THIS IS NOT JUST A SEASON—
IT'S A MOVEMENT.**

“A REVOLUTIONARY STAGE”

WNO'S artistic team has transformed the historic Daughters of the American Revolution Constitution Hall into a vibrant, surround stage with cafe-style seating—your home for the first three programs in WNO's fresh and innovative season!

OUR MISSION WASHINGTON NATIONAL OPERA inspires, connects, and enriches through timeless storytelling that shapes opera's future and reflects the American and human experience.



2026/27 Venues

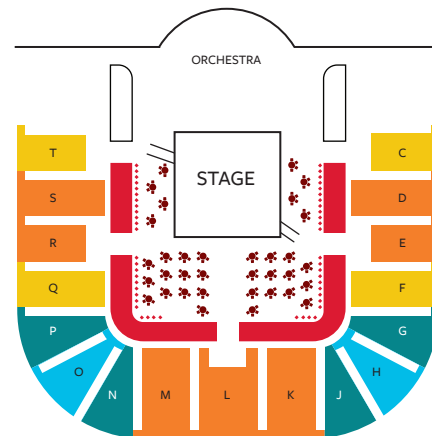
This season, Washington National Opera expands its reach across the region, bringing world-class performances to a dynamic collection of venues, each offering a unique artistic and experience. Together, these spaces form an exciting new home for the company, connecting audiences with opera in fresh and inspiring ways.



DAR CONSTITUTION HALL
1776 D ST NW
WASHINGTON, DC 20006

DAR Constitution Hall is a historic venue just steps from the White House in Washington, D.C. Built in 1929 by the Daughters of the American Revolution, it features the city's largest auditorium and a distinctive U-shaped balcony—completely renovated into WNO's novel "Revolutionary Stage," a 270-degree surround stage with cafe style seating and two bars.

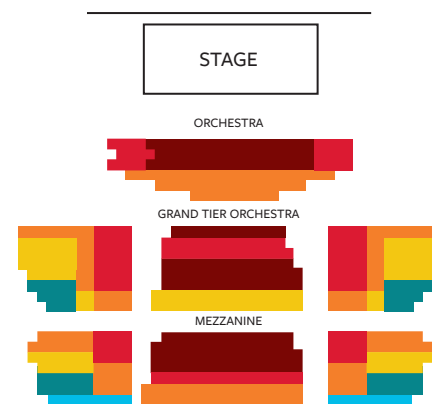
For your visit: Metered, limited street parking is available. There are parking garages located in the area on New York and Pennsylvania Avenues and 17th and 18th Streets. The DAR is accessible by Metro on the orange, blue and red lines.



HARMAN HALL
AT SHAKESPEARE THEATRE COMPANY
610 F ST NW
WASHINGTON, D.C. 20004

Sidney Harman Hall is a modern, versatile theater that opened in 2007. Seating 761, it offers flexible staging for a wide range of productions, with adjustable acoustics.

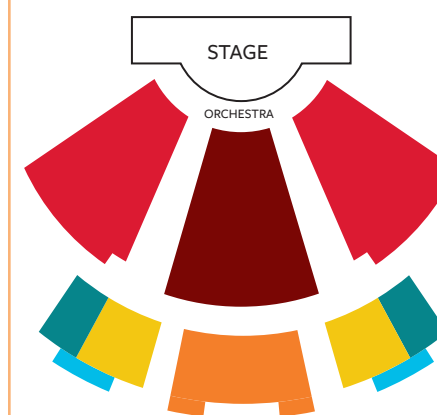
For your visit: The Colonial Parking, The Penn Quarter Garage-InterPark and LAZ garages are privately-owned garages. Consider ride-share services or Metro for hassle-free transport. Gallery Place-Chinatown Station is one block from Harman Hall. The vibrant Penn Quarter boasts numerous nearby fine and casual eateries.



ARENA STAGE AT THE MEAD CENTER FOR AMERICAN THEATER
1101 SIXTH STREET SW
WASHINGTON, DC 20024

The Kreeger Theater inside Arena Stage boasts a fan-shaped space with a modified thrust stage. It pairs state-of-the-art technology with refined amenities, including newly installed furnishings in rich deep-blue tones.

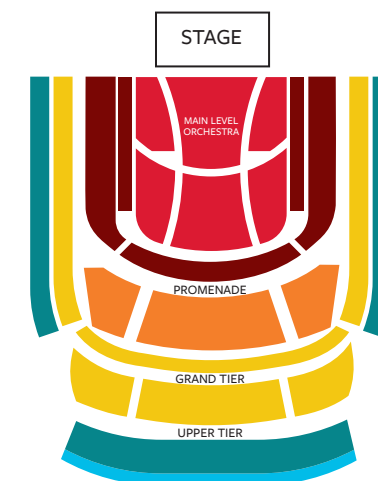
For your visit: Guests can access the entrance to the parking garage by traveling west on Maine Avenue, across from the District Wharf. For Metro, take the green line to the Waterfront station. Check out Arenastage.org for pre-order boxed meal options, restaurant partnerships and local eateries.



THE MUSIC CENTER AT STRATHMORE
5301 TUCKERMAN LANE
NORTH BETHESDA, MD 20852

With its soaring glass walls and windows throughout, beautiful natural light fills interior spaces of the Music Center, and the accents of natural wood make the spaces warm and inviting. Inside, the 1,976-seat concert hall provides pitch-perfect acoustics.

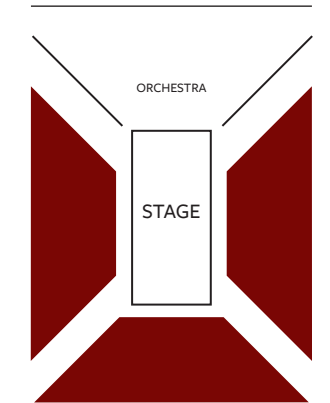
For your visit: Parking is available in the Grosvenor-Strathmore Metro garage off Tuckerman Lane, which is also your stop of the Metro's red line. For dining, enjoy Strathmore's onsite Allegro Kitchen at the Prelude Buffet, open 90 minutes before each show.



WNO STUDIO
6925 WILLOW ST. NW, 3RD FLOOR,
WASHINGTON, D.C. 20012

WNO's own rehearsal space becomes the concert hall for an insider's look at how operas get made.

For your visit: Street parking is available, or a small lot at 7000 Carroll Ave. Historic Takoma Park offers quaint and unique restaurants within walking distance. For Metro, take the red line to Takoma station, the studio is a short walk, less than 10 minutes away.



“Washington National Opera has acted in service of its audience and in protection of the art form. That’s what an opera company is for.”

-THE WASHINGTON POST

NEW PRODUCTION ON THE REVOLUTIONARY STAGE:

Puccini: *Madama Butterfly*

COMPOSER

Giacomo Puccini

LIBRETTISTS

Luigi Illica
Giuseppe Giacosa

Sung in Italian

2 hours and 40 minutes,
including a 25-minute
intermission

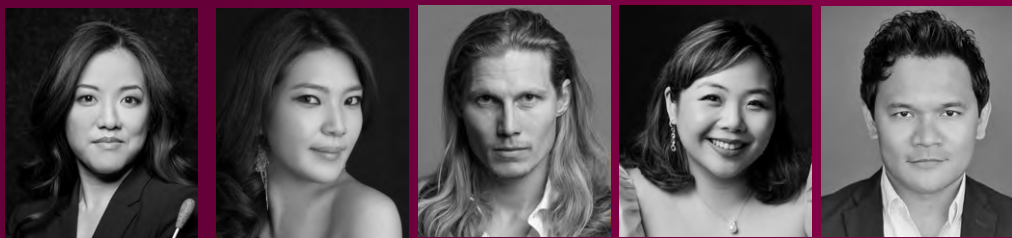
DAR CONSTITUTION HALL

Puccini’s *Madama Butterfly* remains one of opera’s most enduring works, telling a love story as fragile and fleeting as its namesake. In turn-of-the-century Nagasaki, American naval officer Pinkerton marries the young geisha Cio-Cio-San, known as Butterfly. Innocent and devoted, she builds her life around his promise, until betrayal shatters her world and leads to one of opera’s most unforgettable finales.

In this striking new production, directed by E. Loren Meeker and designed by Walt Spangler, WNO’s innovative “Revolutionary Stage” becomes the bustling port of Nagasaki. Evocative period costumes, choreography by Japanese movement specialist Kanji Segawa, and designs by Florence Klotz draw audiences close to Butterfly’s emotional journey.

Korean soprano Karah Son makes her company debut in the title role, joined by tenor Matthew White as Pinkerton and former Cafritz Young Artist Michelle Mariposa as Suzuki. Japanese-German conductor Erina Yashima leads the orchestra, bringing Puccini’s luminous score—including the Act I love duet and “Un bel dì”—to ravishing life.

CONDUCTOR Erina Yashima	SCENIC DESIGNER Walt Spangler	PROJECTIONS DESIGNER Alexander V. Nichols	SUZUKI Michelle Mariposa
DIRECTOR E. Loren Meeker	LIGHTING DESIGNER Duane Schuler	CIO-CIO-SAN Karah Son	GORO Rodell Rosel
CHOREOGRAPHERS Kanji Segawa & Jessica Lang	COSTUME DESIGNER Florence Klotz	PINKERTON Matthew White	



Erina Yashima Karah Son Matthew White Michelle Mariposa Rodell Rosel

DAR CONSTITUTION HALL

WASHINGTON, D.C.

Saturday, November 7, 2026 at 7 PM

Friday, November 13, 2026 at 7 PM

Sunday, November 15, 2026 at 2 PM

Wednesday, November 18, 2026 at 7 PM

Friday, November 20, 2026 at 7 PM

IN NAGASAKI,
LOVE TAKES FLIGHT
ON FRAGILE WINGS.

KARLU DADEL



In gratitude for an exceptional, substantial, and transformative contribution from the **Dallas Morse Coors Foundation**, Washington National Opera dedicates this production of *Madama Butterfly* to the foundation’s benefactor, **Dallas Morse Coors**, in recognition of his philanthropic legacy and passion for the classical canon.

WNO’s production of *Madama Butterfly* is generously supported by **Betsy and Ed Cohen**

COMPANY PREMIERE ON THE REVOLUTIONARY STAGE

Adams: *Nixon in China*

COMPOSER

John Adams

LIBRETTIST

Alice Goodman

DAR CONSTITUTION HALL

Nixon. Kissinger. Mao. In 1972, political titans converge in China for “the week that changed the world.” But beyond the media frenzy lies another story: the private lives behind history. America’s leading opera singers, superstar soprano Renée Fleming and acclaimed baritone Thomas Hampson in their return to the WNO stage, play America’s leading former first couple, Richard and Pat Nixon.

Celebrated as a 20th-century classic, John Adams’s *Nixon in China* revisits the landmark diplomatic encounter between President Richard Nixon, Chairman Mao, and Henry Kissinger. Blending political spectacle with intimate human reflection, the opera moves between public image and private uncertainty, culminating in the haunting question: “How much of what we did was good?”

Robert Spano conducts this reimagined production, directed by Elkhanah Pulitzer, with rare archival film footage by Bill Morrison and Scenic Design by Alexander V. Nichols, expanding the work’s dialogue between history and memory. Kathleen Kim appears as Madame Mao, and Jessica Lang choreographs the iconic Chairman Mao dances.

Sung in English with Projected English Titles

2 hours and 45 minutes, including a 25-minute intermission

CONDUCTOR

Robert Spano

COSTUME DESIGNER

Elisabeth A. Scott

PAT NIXON

Renée Fleming

DIRECTOR

Elkhanah Pulitzer

LIGHTING DESIGNER

Duane Schuler

MADAME MAO

Kathleen Kim

CHOREOGRAPHER

Jessica Lang

PROJECTIONS DESIGNER

Bill Morrison

MAO TSE-TUNG

John Matthew Myers

SCENIC DESIGNER

Alexander V. Nichols

RICHARD NIXON

Thomas Hampson



Robert Spano



Thomas Hampson



Renée Fleming



Kathleen Kim



John Matthew Myers

DAR CONSTITUTION HALL

WASHINGTON, DC

Saturday, November 14, 2026 at 7 PM

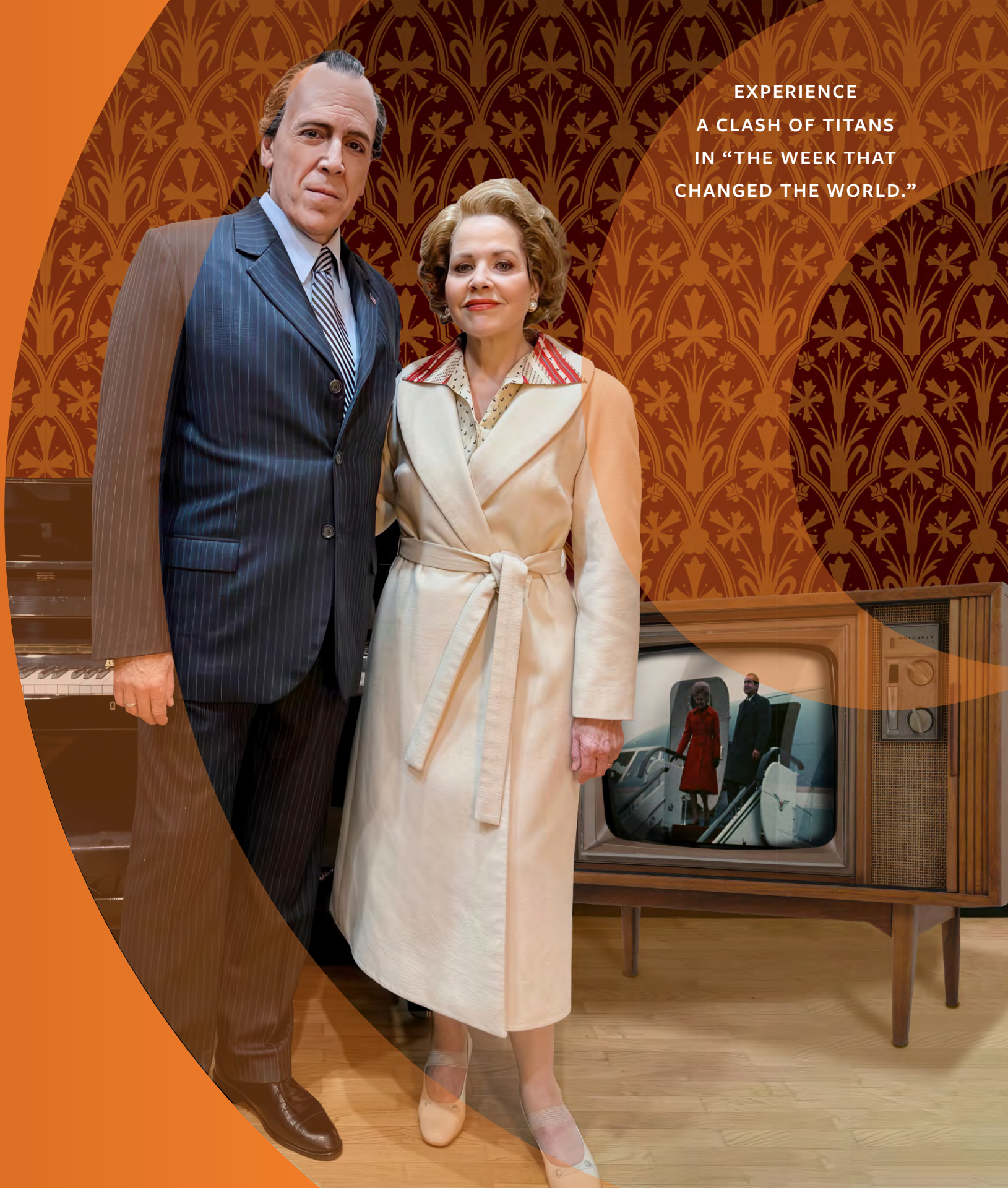
Thursday, November 19, 2026 at 7 PM

Saturday, November 21, 2026 at 2 PM

WNO’s production of *Nixon and China* is generously supported by Robert L. Turner and Peter N. Speliopoulos

Thomas Hampson and Renée Fleming are generously sponsored by Noémi Neidorff

EXPERIENCE
A CLASH OF TITANS
IN “THE WEEK THAT
CHANGED THE WORLD.”





SCOTT SUCHMAN

SPECIAL CONCERT

We the People



SUBSCRIPTION
ADD-ON

CONDUCTOR
Robert Spano

FEATURING
Washington National
Opera Orchestra

DAR CONSTITUTION HALL
WASHINGTON, DC

Sunday,
November 22, 2026
4 PM

DAR CONSTITUTION HALL

We the People is a powerful concert experience that reminds us that freedom is not merely a national ideal, but a human right. Through some of opera's most stirring masterpieces, the evening traces the universal struggle for liberation and dignity. From the spiritual yearning of Bellini's *I Puritani*, to the songs of resistance in Verdi's *Nabucco*, to the emotional fire of *Il Trovatore* and beyond, these works embody the spirit of *risorgimento* - Italian for the "rising again" of a people.

At the center of this sweeping musical journey are three extraordinary voices: Renée Fleming, Thomas Hampson, and Amber R. Monroe. *We The People* is a reminder that the desire to be free is one of humanity's oldest and most urgent songs—and it is still being written.

MARIAN ANDERSON VOCAL AWARD WINNER



Amber Monroe

Amber Monroe

Named for the barrier-breaking contralto, the **Marian Anderson Vocal Award** is presented annually by WNO to a young American singer.

This year's winner is Cafritz Young Artist alumna Amber Monroe, who is emerging as one of American opera's compelling young voices. Her recent seasons include major debuts and returns such as *Aida* with Washington National Opera and in *St. Gallen* in Switzerland, Mary Johnson in *Fellow Travelers* with Seattle Opera, and *Serena* in *Porgy and Bess* at WNO, plus debuts with the Boston and Baltimore symphony orchestras.

COMPANY PREMIERE

Moore: *Odyssey*



SUBSCRIPTION
ADD-ON:
HOLIDAY
OPERA

COMPOSER

Ben Moore

LIBRETTIST

Kelley Rourke

Sung in English with
Projected English Titles

50 minutes

ARENA STAGE

Ben Moore and Kelley Rourke's *Odyssey* brings myth to life in a vibrant, family-friendly 70-minute adventure. This imaginative world is inspired by Rick Riordan's beloved fantasy series that introduces young readers to Greek gods and characters through the eyes of the demigod Percy Jackson.

Blending fantastical adventure with contemporary energy and large-scale puppetry, this production reimagines the timeless journey of Odysseus for a new generation.

Featuring WNO's Youth Chorus alongside the Cafritz Young Artists and presented with orchestra in an intimate theater setting, *Odyssey* offers an exciting and accessible introduction to opera for families and first-time audiences alike.

CONDUCTOR

Donald Lee III

SET DESIGNER

Ryan McGettingan

PRODUCTION

Francesca Zambello

COSTUME DESIGNER

Erik Teague



Donald Lee III

KREEGER THEATER OF ARENA STAGE

AT THE MEAD CENTER

FOR AMERICAN THEATER

WASHINGTON, DC

Friday, December 18, 2026 at 5 PM
Saturday, December 19, 2026 at 2 PM
Saturday, December 19, 2026 at 5 PM
Sunday, December 20, 2026 at 2 PM
Sunday, December 20, 2026 at 5 PM

HEROES, MONSTERS, AND
MORTALS COLLIDE ON AN
EPIC JOURNEY HOME!



KAYLEEN BERTRAND



American Opera Initiative: **WOLF | LAMBS**



**SUBSCRIPTION
ADD-ON**

COMPOSER
JL Marlor

LIBRETTISTS
Clare Fuyuku
Bierman

1 hour 40 minutes

WNO STUDIO

WNO continues its commitment to expanding the repertoire through its popular American Opera Initiative, which mentors emerging composers and librettists as they create new works, performed by **WNO Cafritz Young Artists**. AOI welcomes back alumni composer **JL Marlor** and librettist **Clare Fuyuku Bierman** for a double-bill. The first work, **CRY, WOLF** is a 2025 AOI commission that tells the story about young men on a college campus who use love, fear, and genuine care for one another to push themselves down deep ideological rabbit holes online. It is paired with a 40-minute world premiere from the same team: **LAMBS** follows three cheerleaders on the same college campus as they navigate the violence and sacrifices that they have been driven to through cheer.

WNO STUDIO
WASHINGTON, DC

Friday, January 15, 2027, 7 PM
Saturday, January 16, 2027, 7 PM

SCOTT SUCHMAN

WORLD PREMIERE

Tin: O’Keeffe: Kiss the Sky

COMPOSER
Christopher Tin

LIBRETTIST
Kelley Rourke

Sung in English with
Projected English Titles

2 Hours and 5 Minutes,
including one 25 minute
intermission

HARMAN HALL

O’Keeffe: Kiss the Sky is a groundbreaking new ballet-opera that brings the life and vision of Georgia O’Keeffe into a vivid fusion of music, movement, and theater. With music by Grammy Award® winner Christopher Tin, a libretto by Kelley Rourke, direction by Francesca Zambello, and choreography by Jessica Lang, the production unites a world-class creative team and an international cast led by Isabel Leonard, Christine Goerke, and William Burden under the baton of George Manahan. Centered on O’Keeffe’s rise as one of America’s most iconic artists, the work explores the forces that shaped her voice—from her transformative desert landscapes to the complex relationships that both constrained and inspired her.

CONDUCTOR
George Manahan

SCENIC DESIGNER
Lawrence E. Moten III

GEORGIA O’KEEFFE
Isabel Leonard

DIRECTOR
Francesca Zambello

COSTUME DESIGNER
Constance Hoffman

MABEL DODGE
Christine Goerke

CHOREOGRAPHER
Jessica Lang

LIGHTING DESIGNER
A.J. Guban

ALFRED STIEGLITZ
William Burden



George Manahan



Isabel Leonard



Christine Goerke



William Burden

HARMAN HALL AT

SHAKESPEARE THEATRE COMPANY

WASHINGTON, DC

Friday, March 12, 2027 at 7 PM
Sunday, March 14, 2027 at 2 PM
Thursday, March 18, 2027 at 7 PM
Sunday, March 21, 2027 at 2 PM
Friday, March 26, 2027 at 7 PM

Major support
for *O’Keeffe: Kiss the
Sky* provided by **Denise
Littlefield Sobel**

WNO’s production
of *O’Keeffe: Kiss the
Sky* is possible by a
generous gift from
the **Half Windham
Foundation**

Isabel Leonard is
generously sponsored
by the **Howard and
Sarah D. Solomon
Foundation**

THE UNTAMED BEAUTY OF
O’KEEFFE’S AMERICA—
PAINTED IN MUSIC AND MOVEMENT.



PHIL GROSHONG

NEW PRODUCTION

Mozart's Idomeneo: A Trojan Tale

COMPOSER

Wolfgang
Amadeus Mozart

LIBRETTIST

Giambattista
Varesco

Sung in Italian

2 Hours and 5 Minutes,
including one 25 minute
intermission

HARMAN HALL

You love *The Marriage of Figaro*. Now discover a different side of Mozart.

In *Idomeneo: A Trojan Tale*, Mozart trades comedy for mythic drama in a powerful story of war, sacrifice, and family. Returning home after the Trojan War, King Idomeneo makes a desperate bargain with the gods to save his son—only to face the devastating cost of that promise.

Reimagined by Francesca Zambello and Kelley Rourke, this theatrical adaptation draws inspiration from ancient Greek theater, placing raw human emotion at the center of Mozart's magnificent score. Connecting Mozart's ravishing arias and ensembles, a newly created character, the Trojan Woman, guides the story forward, while the orchestra performs onstage in a fully immersive production. Featuring acclaimed tenor Gregory Kunde in the title role, alongside current Cafritz Young Artists, *Idomeneo* reveals Mozart at his most intimate, urgent, and emotionally powerful.

CONDUCTOR

Robert Spano

SCENIC DESIGNER

Lawrence E. Moten III

LIGHTING DESIGNER

A.J. Guban

PRODUCTION

Francesca Zambello

COSTUME DESIGNER

Lynly A. Saunders

IDOMENEO

Gregory Kunde



Robert Spano



Gregory Kunde

HARMAN HALL AT

SHAKESPEARE THEATRE COMPANY

WASHINGTON, DC

Saturday, March 20, 2027 at 7 PM
Thursday, March 25, 2027 at 7 PM
Saturday, March 27, 2027 at 2 PM

WNO's production
of *Mozart's Idomeneo: A
Trojan Tale* is generously
supported by the
Eugene V. and Clare E.
Thaw Charitable Trust



FOR FAMILY,
EVERY BARGAIN HAS A PRICE.

DIEGO REBEL PHOTOGRAPHY / ASPEN MUSIC FESTIVAL AND SCHOOL

Verdi: *La traviata*

COMPOSER
Giuseppe Verdi

LIBRETTIST
Francesco
Maria Piave

Sung in Italian with
Projected English Titles

2 hours and 30 minutes,
including a 25-minute
intermission

THE MUSIC CENTER AT STRATHMORE

At the center of Parisian high society, Violetta lives for pleasure while concealing a fatal illness. When Alfredo declares his love, she dares to believe in a different future—until scandal and family honor intervene. She’s the life of every party, but time is running out.

This elegant production by Francesca Zambello features sumptuous costumes by Tony Award-winner Jess Goldstein, inspired by the paintings of John Singer Sargent. From the sparkling brindisi to the poignant “Addio del passato,” *La traviata* remains one of opera’s most captivating and devastating love stories. For the performance on April 30, WNO Cafritz Young Artists take centerstage in the lead roles!

CONDUCTOR
Valentina Peleggi

LIGHTING DESIGNER
A.J. Guban

PRODUCTION
Francesca Zambello

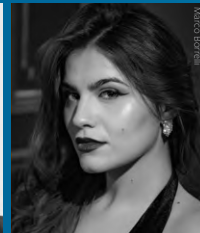
VIOLETTA
Francesca Pia Vitale

COSTUME DESIGNER
Jess Goldstein

ALFREDO
Ben Bliss



Valentina Peleggi



Francesca Pia Vitale



Ben Bliss

THE MUSIC CENTER
AT STRATHMORE

Thursday, April 29, 2027 at 7 PM
Friday, April 30, 2027 at 7 PM
Saturday, May 1, 2027 at 7 PM

Major support for
La traviata provided
by Jacqueline
Badger Mars

SHE’S THE LIFE
OF THE PARTY. BUT LOVE
COMES AT A PRICE.



SCOTT SUCHMAN

Artist Spotlight

BE ON THE LOOKOUT
FOR THESE GREAT
TALENTS IN OUR
NEW SEASON!

Madama Butterfly



KARAH SON **CIO-CIO-SAN | SOPRANO**

Karah Son is a distinguished soprano acclaimed for her captivating performances in some of opera's most iconic roles, particularly Cio-Cio San in Puccini's *Madama Butterfly*—a role she has performed in nearly every major opera company in the world.



MATTHEW WHITE **PINKERTON | TENOR**

Matthew White, praised for his “attractive, healthy voice” (*The New York Times*), has appeared as Don José (*Carmen*) and Pinkerton (*Madama Butterfly*), *Don Carlo*, *Des Grieux*, and *Rodolfo*, among other notable roles. A Deutsche Grammophon recording artist, he is a Grand Prize winner of the Gerda Lissner Competition.



MICHELLE MARIPOSA **SUZUKI | MEZZO-SOPRANO**

Michelle Mariposa, a 2025 Laffont Competition Grand Finals winner and 2023 Sullivan Award recipient, is praised for her “rich, powerful mezzo.” Her 2024/25 season included debuts with Washington National Opera and a return to Opera Theatre of Saint Louis, plus concerts with the International Meistersinger Akademie.



RODELL ROSEL **GORO | TENOR**

Rodell Rosel, a GRAMMY nominee, appears regularly with the Metropolitan Opera, Lyric Opera of Chicago, Los Angeles Opera, Houston Grand Opera, and Royal Opera House. Renowned for character roles, he debuted at the Met in *Der Rosenkavalier* and has created roles in works by Paul Moravec and Jake Heggie.

Nixon in China



THOMAS HAMPSON **RICHARD NIXON | BARITONE**

Thomas Hampson, widely regarded as one of today's most innovative musicians, has performed over 80 operatic roles and recorded more than 170 albums. A GRAMMY-nominated artist and major international award recipient, he appears this season in *Nixon in China* at the Paris Opera and in concerts with leading orchestras worldwide.



RENÉE FLEMING **PAT NIXON | SOPRANO**

Renée Fleming is one of the most acclaimed singers of our time, performing at the world's leading opera houses and concert halls. A 2023 Kennedy Center Honoree and five-time GRAMMY Award winner, she is also a recipient of the U.S. National Medal of Arts. Her recent projects include *Voice of Nature: the Anthropocene* and appearances in major venues including Carnegie Hall and the Metropolitan Opera. She serves as a WHO Goodwill Ambassador for Arts and Health and is a leading advocate for the intersection of arts, neuroscience, and wellbeing.



KATHLEEN KIM **MADAME MAO | SOPRANO**

Kathleen Kim is a frequent guest artist at the Metropolitan Opera, where she has appeared in a wide range of roles including Tytania, Olympia, Blondchen, Oscar, and Zerbinetta under conductors such as James Levine, Fabio Luisi, and Kirill Petrenko. She recently returned in the acclaimed revival of *The Hours*.



JOHN MATTHEW MYERS **MAO TSE-TUNG | TENOR**

Praised for his “strong, pleasant timbre” (*Opera Magazine*) and “warm tenor of considerable promise” (*Opera News*), **John Matthew Myers** has appeared with leading houses including the Metropolitan Opera, Opéra National de Paris, and Teatro alla Scala. He recently performed Mao in *Nixon in China* and Florestan in *Fidelio*.

Artist Spotlight

O’Keeffe: Kiss the Sky



ISABEL LEONARD **GEORGIA O’KEEFFE | MEZZO-SOPRANO**

Isabel Leonard is a renowned American 3-time GRAMMY Award-winning mezzo-soprano, celebrated for her starring roles at the Metropolitan Opera and leading global stages. Known for versatile performances in opera (*Carmen*, *Cenerentola*), recitals, and film (*Maestro*), she is a frequent Met Live in HD host and advocate for arts education.



CHRISTINE GOERKE **MABEL DODGE | SOPRANO**

Christine Goerke has appeared at leading opera houses worldwide, including the Metropolitan Opera, Royal Opera House Covent Garden, La Scala, and the Paris Opera. Acclaimed for dramatic Wagner and Strauss roles such as Brünnhilde, Elektra, and Turandot, she is also an acclaimed concert artist and GRAMMY Award-winning recording performer. She was the recipient of the 2001 Richard Tucker Award, the 2015 *Musical America* Vocalist of the Year Award, and the 2017 *Opera News* Award.



WILLIAM BURDEN **ALFRED STIEGLITZ | TENOR**

William Burden has built an outstanding reputation across Europe and North America. He has appeared at leading opera houses including the Metropolitan Opera, San Francisco Opera, Lyric Opera of Chicago, Opéra National de Paris, and Bayerische Staatsoper, in repertoire ranging from Mozart and Britten to contemporary world premieres.

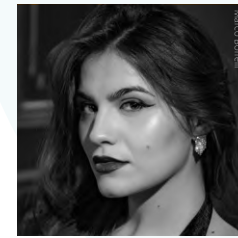
Idomeneo: A Trojan Tale



GREGORY KUNDE **IDOMENEO | TENOR**

Gregory Kunde is regarded as one of the most accomplished singers on the international opera stage, with a 40-year career spanning leading houses worldwide. In 2025/26, he returns to major roles including Radamès (*Aida*), Otello, and Canio (*Pagliacci*), alongside appearances in gala concerts across Europe and China.

La traviata



FRANCESCA PIA VITALE **VIOLETTA | SOPRANO**

Francesca Pia Vitale is regarded as one of the leading talents to emerge from the Accademia del Teatro alla Scala. She won first prize in the prestigious 2022 Neue Stimmen Competition. Recent appearances include Musetta, Norina, Adina, Giulietta, and Angelica at major houses including the Liceu, Teatro Real, Staatsoper Unter den Linden, Opéra Bastille, and Teatro Massimo di Palermo. A frequent performer at Teatro alla Scala since 2018, she opens 2026 at Teatro Regio di Parma and returns to La Scala for her debut as Violetta in *La traviata*.



BEN BLISS **ALFREDO | TENOR**

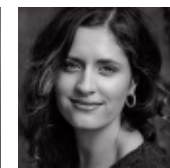
Ben Bliss was most recently praised as “a peer of the best Toms in the opera’s seven-decade history” (Voix des Arts) in *The Rake’s Progress* at the The Metropolitan Opera, where he returned for the 2025-2026 season in *Don Giovanni*. He will make two anticipated role debuts: Duke in *Rigoletto* with the Canadian Opera Company, and the title role in *Idomeneo* with Washington Concert Opera, as well as appearances with Houston Grand Opera, Chicago Symphony, LA Opera, and more.

The 2026/27 Cafritz Young Artists

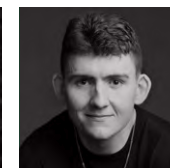
RETURNING



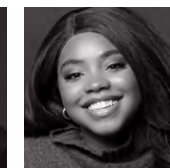
Chandler Benn
baritone



Lauren Carroll
soprano



Robert Frazier
bass baritone



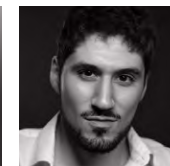
Viviana Goodwin
soprano



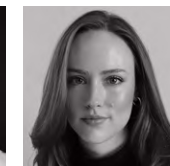
Hakeem Henderson
tenor



Thandolwethu Mamba
baritone



Atticus Rego
bass



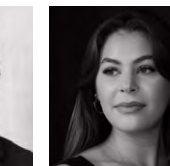
Veronica Siebert
mezzo-soprano



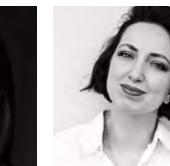
Deven Shah
pianist



Reed Gnepper
tenor



Anna Maria Vacca
mezzo-soprano



Anna Gershtein
pianist

INCOMING

With the Cafritz Young Artist Program, WNO champions the next generation of singers, pianists, and coaches. Under the direction of Christopher Cano, this premier resident training program develops exceptional young singers and pianists at a pivotal stage in their careers—many of whom go on to perform on the world’s leading opera stages.

Our 2026/27 season marks the program’s 25th anniversary. Throughout their training, Cafritz Young Artists are featured prominently in WNO performances. This season, The Cafritz Young Artists will comprise the full cast of *Mozart’s Idomeneo: A Trojan Tale* and the performance of *La traviata* on April 30.

Major support for the Cafritz Young Artist Program provided by **The Morris and Gwendolyn Cafritz Foundation**

Subscribe today!

SUBSCRIBER ADVANTAGE

Check out all of the exclusive benefits that full series subscribers get, compared to single ticket buyers. Call, email, or go online for complete details.

BEST SEATS

EARLY ACCESS TO THE SEASON

You get the opportunity to subscribe first, and seats are assigned well before individual tickets go on sale to the general public.

BEST SEATS

Enjoy them all season long, for all the performances in your full series.

TICKETS


Buy tickets all in one place and avoid using multiple sales options like Ticketmaster.

Restrictions to ticket savings and exchanges may apply. No-fee exchanges are available up to 48 hours before each performance. You only pay any applicable difference in the ticket price of the new performance. Tax, tip, alcohol, and Intermission Bar purchases are excluded from dining savings.

FLEXIBLE EXCHANGES


We're here for you when the unexpected happens! We've got your back with flexibility and unlimited exchanges so you can feel secure in your subscription purchase.


 **NO EXCHANGE FEES**
If something comes up, we'll exchange your tickets and waive the service fees every time.

 **UNLIMITED EXCHANGES**
There's no limit to the number of times you can exchange your tickets. Switch them out as often as you need. Exchanges must be made at least 48 hours prior to your performance.

EXCLUSIVE SAVINGS

 **10% OFF YOUR SERIES**
Save on all the performances in your full series.

 **SERIES PRICES "LOCKED IN"**
No matter the demand, pricing for a full series remains the same, for as long as that full series is offered.

 **10% OFF OTHER SHOWS**
Save on select performances and educational events as add-on options now, or later in the season.



“Washington National Opera continues to expand our idea of who opera is for and whose story gets told”

~ DC THEATER ARTS

HOW TO ORDER

Go online to
WASHNATOPERA.ORG/SUBSCRIBE



Call the Subscriptions Office at 202-796-0071, weekdays 10 AM-5 PM.

Renewing subscribers can mail your completed renewal form to:

Washington National Opera
6955 Willow St. NW, #377, Washington, DC 20012

We will do our best to help you get the seats of your choice or as close to them, however online purchases will be confirmed in real-time.

Questions? Email subs@washnatopera.org and a WNO team member will be happy to assist you!



DONATE ONLINE

Please consider helping WNO during this historic moment of transition as we set the stage for the future of our National Opera company. Your support directly supports our artists, our productions, our commitment to the future of opera through our Cafritz Young Artists program and American Opera Initiative, our dedication to artistic excellence, and our mission to make opera accessible to all.

Scan the QR code to get the latest information on donor membership benefits, sponsorship opportunities, and more.



SCOTT SUCHMAN

MADAMA BUTTERFLY | PUCCINI

NIXON IN CHINA | ADAMS

SPECIAL CONCERT: WE THE PEOPLE

ODYSSEY | MOORE

AMERICAN OPERA INITIATIVE: WOLF | LAMBS | MARLOR

O'KEEFFE: KISS THE SKY | TIN

IDOMENEO: A TROJAN TALE | MOZART

LA TRAVIATA | VERDI

THANKS TO OUR
SEASON SPONSORS

GENERAL DYNAMICS

Jacqueline Badger Mars

Dallas Morse Coors