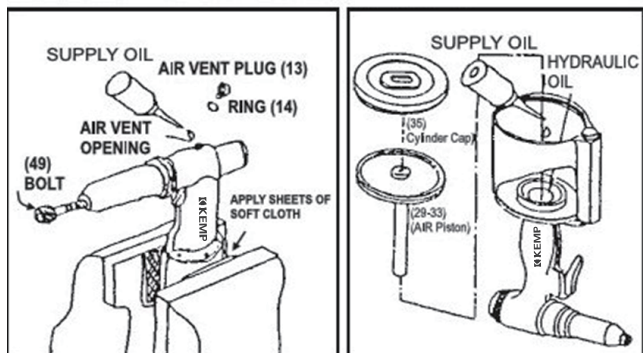
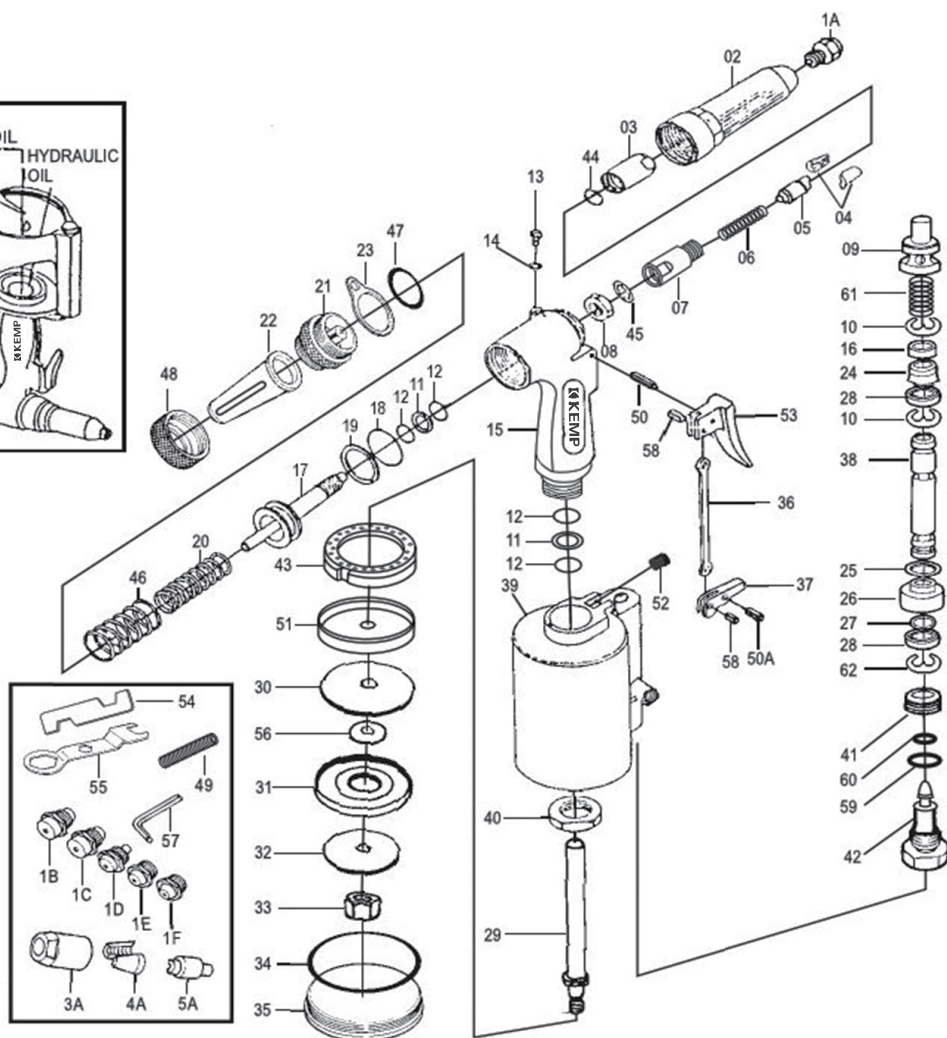
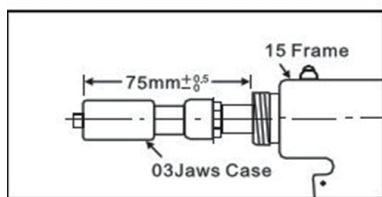


ENERGY SAVING TYPE ADDING OIL METHOD



ADJUSTING LENGTH



NO.	PART NO.	DESCRIPTION	Qty	NO.	PART NO.	DESCRIPTION	Qty	NO.	PART NO.	DESCRIPTION	Qty
1A	141 11 302 001	Nose Piece 6.4m/m(1/14")	1	18	141 11 302 018	O Ring	1	43	141 11 302 043	Rubber Cushion	1
1B	141 11 302 201	Nose Piece 6.0m/m(7/32")	1	19	141 11 302 019	Back Up Ring	1	44	141 11 302 044	Jaw Case O Ring	1
1C	141 11 302 301	Nose Piece 4.8m/m(3/16")	1	20	141 11 302 020	Return Spring (Inner)	1	45	141 11 302 045	Washer Ring	1
1D	141 11 302 401	Nose Piece 4.0m/m(5/32")	1	21	141 11 302 021	Frame Cap	1	46	141 11 302 046	Return Spring (Outer)	1
1E	141 11 302 501	Nose Piece 3.2m/m(1/8")	1	22	141 11 302 022	Safety Cap	1	47	141 11 302 047	Frame Cap O Ring	1
1F	141 11 302 601	Nose Piece 2.4m/m(3/32")	1	23	141 11 302 023	Hanger Clip	1	48	141 11 302 048	Cap Nut	1
02	141 11 302 002	Nose Housing 93L	1	24	141 11 302 024	Air Valve Seal	1	49	141 11 302 049	Bolt Plug (3/16")	1
03	141 11 302 003	Jaw Case (3/16"~1/4")	1	25	141 11 302 025	O Ring	1	50	141 11 302 050	Pin 3x20	1
3A	141 11 302 203	Jaw Case (3/32"~3/16")	1	26	141 11 302 026	Valve Seat	1	50A	141 11 302 250	Pin 3x18	1
04	141 11 302 004	Jaws (6x12)(3/16"~1/4")	2	27	141 11 302 027	O Ring	1	51	141 11 302 051	Bumper seat	1
4A	141 11 302 204	Jaws (5x10)(3/32"~3/16")	2	28	141 11 302 028	Ring Seal Washer	2	52	141 11 302 052	Lock Screw	1
05	141 11 302 005	Jaw Pusher (3/16"~1/4")	1	29	141 11 302 029	Air Piston Rod	1	53	141 11 302 053	Trigger (Long)	1
5A	141 11 302 205	Jaw Pusher (3/32"~3/16")	1	30	141 11 302 030	Air Piston Board	1	54	141 11 302 054	Spanner 17 And 19	1
06	141 11 302 006	Jaw Case spring	1	31	141 11 302 031	Cap Packing	1	55	141 11 302 055	Spanner 14, 28, 19	1
07	141 11 302 007	Jaw Case Back Part	1	32	141 11 302 032	Packing Washer	2	56	141 11 302 056	Piston Washer Seat	1
08	141 11 302 008	Jaw Case Lock Nut	1	33	141 11 302 033	Lock Nut	1	57	141 11 302 057	Hex Wrench 3/16", 5mm	2
09	141 11 302 009	Valve Pusher	1	34	141 11 302 034	O Ring	1	58	141 11 302 058	Trigger Pin	2
10	141 11 302 010	E Ring	2	35	141 11 302 035	Cylinder Cap	1	59	141 11 302 059	O Ring	1
11	141 11 302 011	Back Up Ring	2	36	141 11 302 036	Trigger Rod	1	60	141 11 302 060	Seal	1
12	141 11 302 012	O Ring	4	37	141 11 302 037	Trigger Lever	1	61	141 11 302 061	Pusher Spring	1
13	141 11 302 013	Air Blow Plug (5mm)	1	38	141 11 302 038	Valve Tube	1	62	141 11 302 062	E Ring	1
14	141 11 302 014	Packing	1	39	141 11 302 039	Air Cylinder	1				
15	141 11 302 015	Frame	1	40	141 11 302 040	Frame Lock Nut	1				
16	141 11 302 016	Collar for Valve Tube	1	41	141 11 302 041	Nipple Screw	1				
17	141 11 302 017	Oil Piston	1	42	141 11 302 042	End Plug	1				

※ Please Always Ensure The Part No. 13 Air Blow Plug Tight Threaded

A-EBT-HN1-S14T157 A