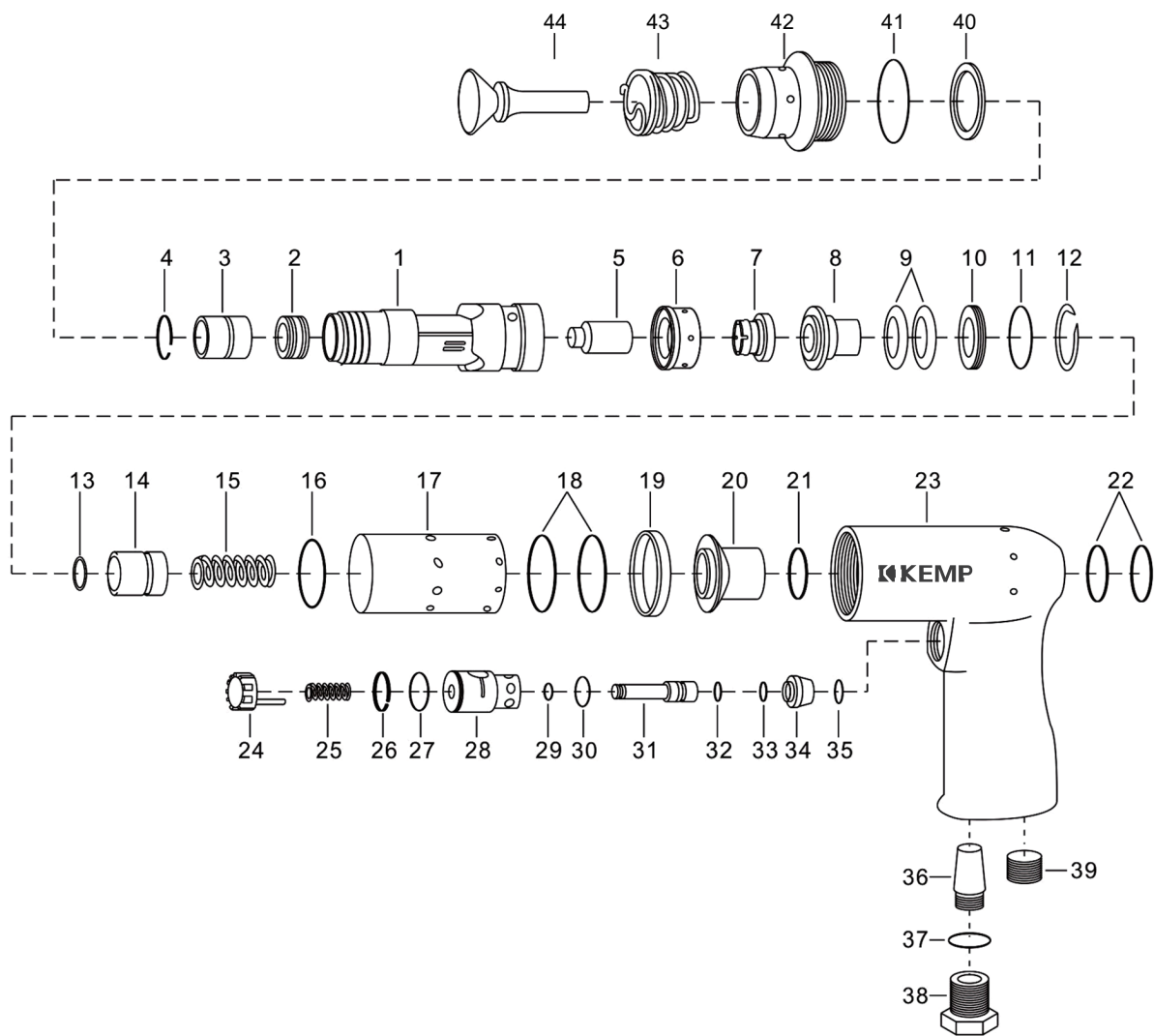


# KEMP A-EHP-PL1-S40B39 3/16" VIBRATION-DAMPED AIR RIVETING HAMMER



NO.	PART NO.	DESCRIPTION	Qty	NO.	PART NO.	DESCRIPTION	Qty
1	146 08 301 001	Cylinder	1	23	146 08 301 023	Handle	1
2	146 08 301 002	Buffer	1	24	146 08 301 024	Push Button	1
3	146 08 301 003	Nozzie Ø10.2mm	1	25	146 08 301 025	Spring	1
4	146 08 301 004	Lock Ring RB 20	1	26	146 08 301 026	Lock Ring	1
5	146 08 301 005	Piston	1	27	146 08 301 027	O-ring (16.1x1.6)	1
6	146 08 301 006	Main Valve Housing	1	28	146 08 301 028	Valve Sleeve	1
7	146 08 301 007	Main Valve	1	29	146 08 301 029	O-ring (5.1x1.6)	1
8	146 08 301 008	Cover	1	30	146 08 301 030	O-ring (13.1 X 1.6)	1
9	146 08 301 009	Cup Spring	2	31	146 08 301 031	Valve Spindle	1
10	146 08 301 010	Support Ring	1	32	146 08 301 032	O-ring (6.1x1.6)	1
11	146 08 301 011	O-ring (26.1 X 1.2)	1	33	146 08 301 033	O-ring (8.1x1.6)	1
12	146 08 301 012	Circlip	1	34	146 08 301 034	Valve Cap	1
13	146 08 301 013	O-ring (8.1x1.6)	1	35	146 08 301 035	O-ring (12.1x1.6)	1
14	146 08 301 014	Piston	1	36	146 08 301 036	Silencer	1
15	146 08 301 015	Spring	1	37	146 08 301 037	O-ring (17.3x2.4)	1
16	146 08 301 016	O-ring (32x2.4)	1	38	146 08 301 038	Adapter 1/4 NPT	1
17	146 08 301 017	Sleeve	1	39	146 08 301 039	Plug 3/8 PT	1
18	146 08 301 018	O-ring (37.8x1.78)	2	40	146 08 301 040	Ring	1
19	146 08 301 019	Filter	1	41	146 08 301 041	O-ring (26.1x1.2)	1
20	146 08 301 020	Cylinder	1	42	146 08 301 042	Casing	1
21	146 08 301 021	O-ring (22.1x1.6)	1	43	146 08 301 043	Retainr	1
22	146 08 301 022	O-ring (25.1x1.6)	2	44	146 08 301 044	Flush Set Ø10.2mm	1