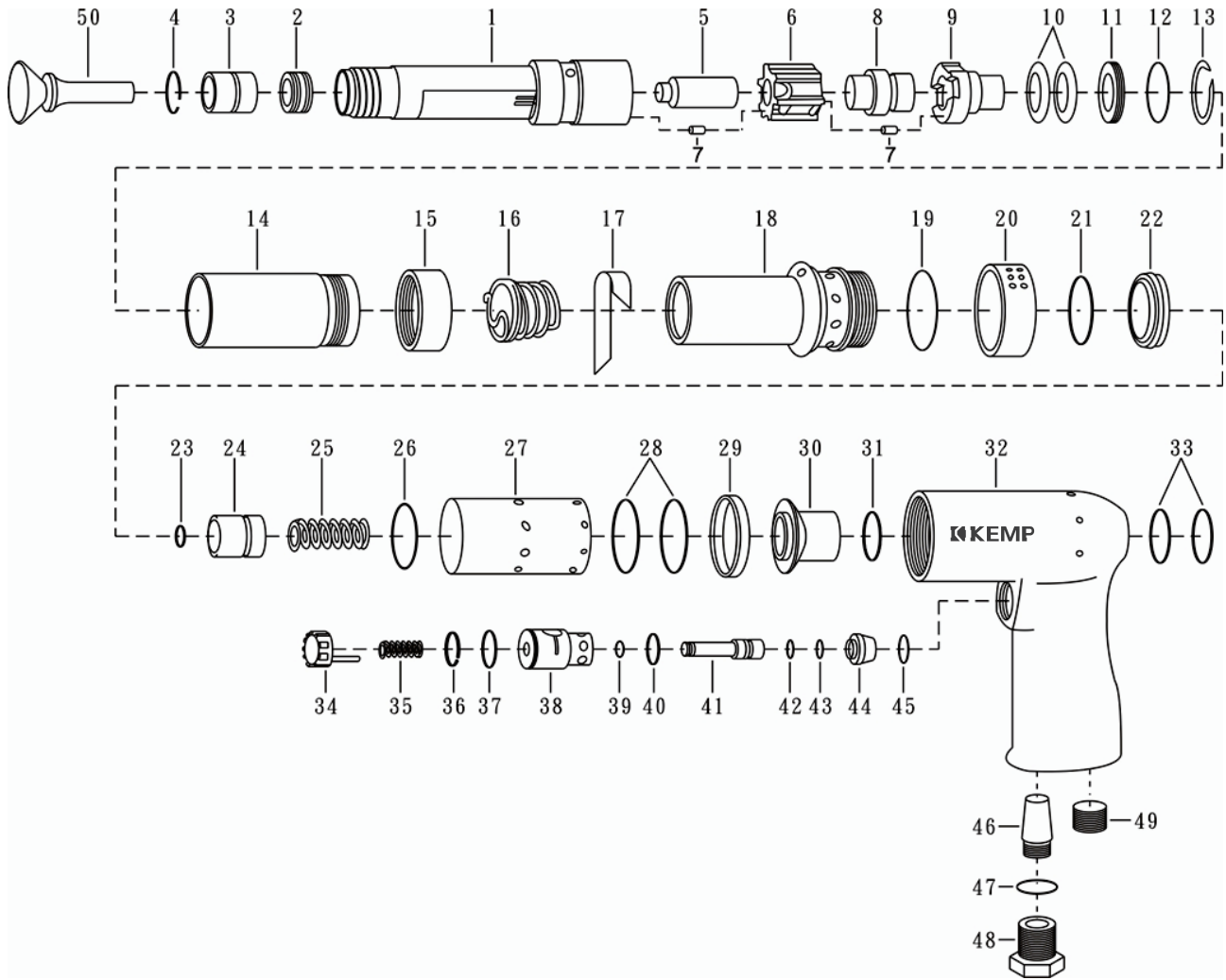


KEMP A-EHP-PL1-S102B21 1/4" VIBRATION-DAMPED AIR RIVETING HAMMER



NO.	PART NO.	DESCRIPTION	Qty	NO.	PART NO.	DESCRIPTION	Qty
1	146 08 307 001	Cylinder	1	26	146 08 307 026	O-ring (32 x 24)	1
2	146 08 307 002	Buffer	1	27	146 08 307 027	Sleeve	1
3	146 08 307 003	Nozzie	1	28	146 08 307 028	O-ring (37.82 x 1.78)	2
4	146 08 307 004	Lock ring (RB 20)	1	29	146 08 307 029	Filter	1
5	146 08 307 005	Piston	1	30	146 08 307 030	Cylinder	1
6	146 08 307 006	Main Valve housing	2	31	146 08 307 031	O-ring (22.1 x 1.6)	1
7	146 08 307 007	Bearing Needle (2 x 9.8)	2	32	146 08 307 032	Handle	1
8	146 08 307 008	Main valve	1	33	146 08 307 033	O-ring (25.1 x 1.6)	1
9	146 08 307 009	Cover	1	34	146 08 307 034	Push button	1
10	146 08 307 010	Cup Spring	2	35	146 08 307 035	Spring	1
11	146 08 307 011	Support ring	1	36	146 08 307 036	Lock ring (19x 1V)	1
12	146 08 307 012	O-ring (26.1 x 1.2)	1	37	146 08 307 037	O-ring (16.1 x 1.6)	1
13	146 08 307 013	Circlip	1	38	146 08 307 038	Valve sleeve	1
14	146 08 307 014	Hand guard	1	39	146 08 307 039	O-ring (5.1 x 1.6)	1
15	146 08 307 015	Nut	1	40	146 08 307 040	O-ring (13.1 x 1.6)	1
16	146 08 307 016	Retainer	1	41	146 08 307 041	Valve spindle	1
17	146 08 307 017	Bearing strip	1	42	146 08 307 042	O-ring (6.1 x 1.6)	1
18	146 08 307 018	Casing	1	43	146 08 307 043	O-ring (8.1 x 1.6)	1
19	146 08 307 019	O-ring (37.82 x 1.78)	1	44	146 08 307 044	Valve cap	1
20	146 08 307 020	Exhaust cover	1	45	146 08 307 045	O-ring (12.1 x 1.6)	1
21	146 08 307 021	O-ring (32 x 2.4)	1	46	146 08 307 046	Silencer	1
22	146 08 307 022	Ring	1	47	146 08 307 047	O-ring (17.3 x 2.4)	1
23	146 08 307 023	O-ring (8.1 x 1.6)	1	48	146 08 307 048	Adapter (1/4" NPT)	1
24	146 08 307 024	Piston	1	49	146 08 307 049	Plug (BSPT 3/8")	1
25	146 08 307 025	Spring	1	50	146 08 307 050	Flush set	1