

A CUSTOM-BUILT CLUB COMMUNITY WITH HOMES RANGING FROM \$20-\$50,000

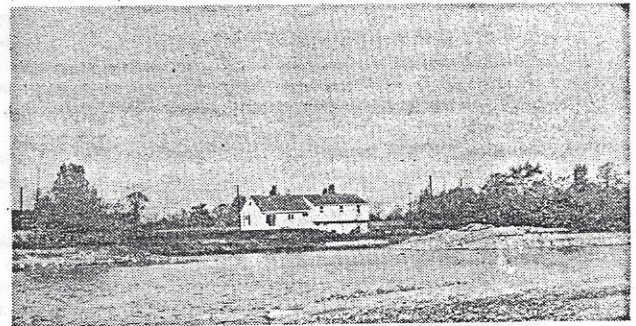
Prices include scenic wooded and lakefront lots



A REALLY
MODERN HOME
 HAS A REALLY
**CLEAN
 FLAMELESS
 ELECTRIC
 KITCHEN**



Lakeside home, air-conditioned year 'round with advanced JET-HEET/COOL and water heating equipment—4 bedrooms with expansion room for a fifth—2½ baths—living, dining, all-electric kitchen, family rooms (all large)—oversized 2-car garages—all the closet and storage space you could possibly desire.



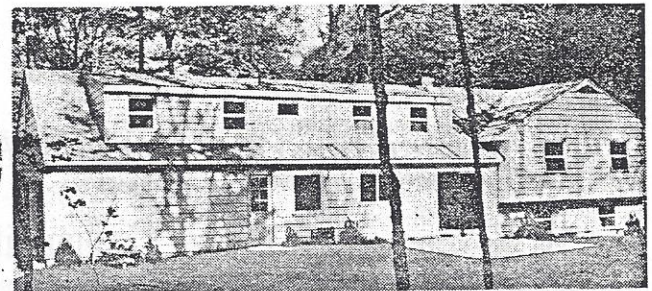
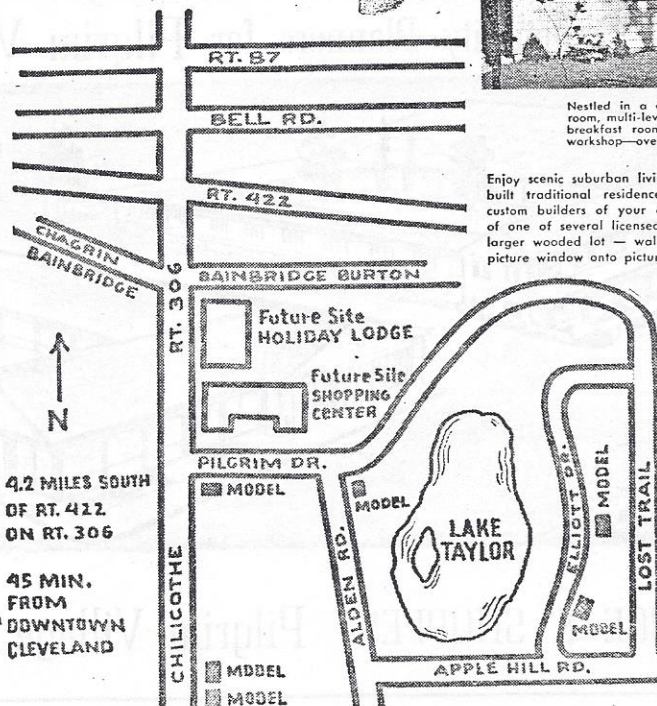
Overlooking the ever-changing panoramic beauty of Lake Taylor, this 4-bedroom home is open for your inspection at PILGRIM VILLAGE. A total of 36 scenic wooded, orchard and meadow lakefront lots surround this 14-acre lake and park area.

GREATER CLEVELAND'S COMPLETE HOME RECREATIONAL AREA . . .

Pilgrim Village

ALL IMPROVEMENTS AT
 NO COST TO PURCHASER

- Scenic Wooded & Waterfront Lots
- Central Sewage System
- Paved Roads
- City Conveniences
- 14-Acre Lake & Park Area
- Swimming Pool
- Riding Trails
- Boating
- Fishing
- New \$300,000 Shopping Center
- New \$300,000 Holiday Lodge with Restaurant & Indoor Pool



Nestled in a densely-wooded lot, with private terrace and pool—6-bed-room, multi-level home—large living, dining, flameless electric kitchen, and breakfast room—walkout recreation room with fireplace, utility room, workshop—oversized 2-car garage.

Enjoy scenic suburban living in one of the authentic 1, 1½, or 2-story custom designed and built traditional residences nestled in this newest and finest lakeside community. Select custom builders of your choice, or benefit from the Pilgrim Village construction experience of one of several licensed contractors. Build your dream home on a wide, scenic, 1-acre or larger wooded lot — walk from your patio into your own apple orchard — look from your picture window onto picturesque maple sugar trails. Visit Pilgrim Village and convince yourself.

This coupon, when completed and deposited at Pilgrim Village, will entitle each family who, during the remainder of 1962, completes arrangements for construction of a house in Pilgrim Village, during the rest of this year or during 1963, to have one of the following electric HOTPOINT appliances installed in that house at no cost to the home buyer.

- Hotpoint RF-35C Electric 30-inch slip in range, or,
- Hotpoint Customline series built-in Electric range and oven, or,
- Hotpoint DA45C Dishwasher-Disposal combination.

NAME _____	
ADDRESS _____	
CITY _____	STATE _____
TELEPHONE No. _____	
(Please list preferred appliance) _____	

Pilgrim Village

PILGRIM VILLAGE DID NOT JUST HAPPEN!

Hundreds of acres of grazing land, orchards and northeast Ohio's choicest maple syrup gathering area is located here. For generations this land was owned by a few families in Geauga County's Bambridge Township.

This is the land that is being introduced to potential home owners as Pilgrim Village.

Two years ago these families formed the Pilgrim Land Company to develop this picturesque property.

Howard Taylor, president of Pilgrim Land Co. and major producer of maple syrup from this area, retained Construction Specifications Consultants Inc. (CSC Inc.), a community planning firm, to co-ordinate this development.

It was decided that this should be a different type of community. A village built for and by the individualistic home owner... a custom-built club community with nearby shopping and recreational facilities.

It was not an easy task to assure the present and future home owners that they would receive, when they decide to live here, the

finest in materials, labor and service. Many firms were contacted and screened so that Pilgrim Village can have nothing but the best.

Other home builders in this land are Kenston Company, who's president is Walter Wren; Charles Wittman Builders, who with his dad have built many homes and now have contracted Better Precision Cut Homes from New Jersey to supply the finest pre-cut lumber that they could find. R. F. Knowles, another quality builder who insists on perfection and can be contacted at Kl. 3-1951. Leonardo Builders, another "Shaker Heights" type builder who can be reached at ED. 8-1700. CSC Inc., headed by Norvel Hill and co-ordinator of Pilgrim Village, is also a home builder and can be reached at ED. 8-5323.

Mr. Hill is an architect and

engineer, as well.

Products and who supply them are of the most importance... For instance, L. P. Gas for our present home owners until natural gas is installed, has been handled by the FramGas Company who has done a tremendous job thus far. Natural gas pipelines presently run through the number two section of Pilgrim Village and it won't be many months before all of our residents are supplied with it.

Hotpoint electric appliances to the acknowledgment of Pilgrim Village have passed the "Performance Test". Barnes water pumps

have been rated number one. "Jet Heat" was by far the best in heating and cooling. Allied Oil Company backs this. Scheirich kitchens supplied by Keeney Schwank were rated as "best" for Pilgrim Village; Pella windows were figured best for Pilgrim Village. The Gunton Company supplies them.

When it came to financing and insurance, there was only Park View Federal Savings and Loan Association in Chagrin Falls who took care of the mortgages in a pleasant and dignified manner and the insurance at Pilgrim thus far was taken care of by Lawyers Title Insurance Co. in Char-

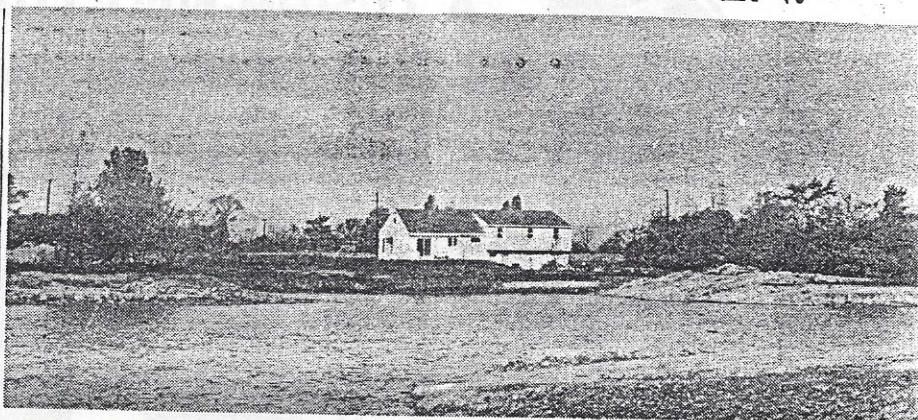
don because of their thorough and courteous assistance. You can contact Park View Federal at CH. 7-7307 and Lawyers Title at AV. 5-2129

Last, but far from least, the labor, how the job is done, was handled by the following firms: Security Septic Tank Co., 4864 Henry St., in Garfield Heights, who is installing the first residential sewage plant in Geauga County. Industrial Crest Electric has done all the electrical work in these homes and will do the job for "Holiday Lodge" and the shopping center.

James Giles did the plumbing work in these

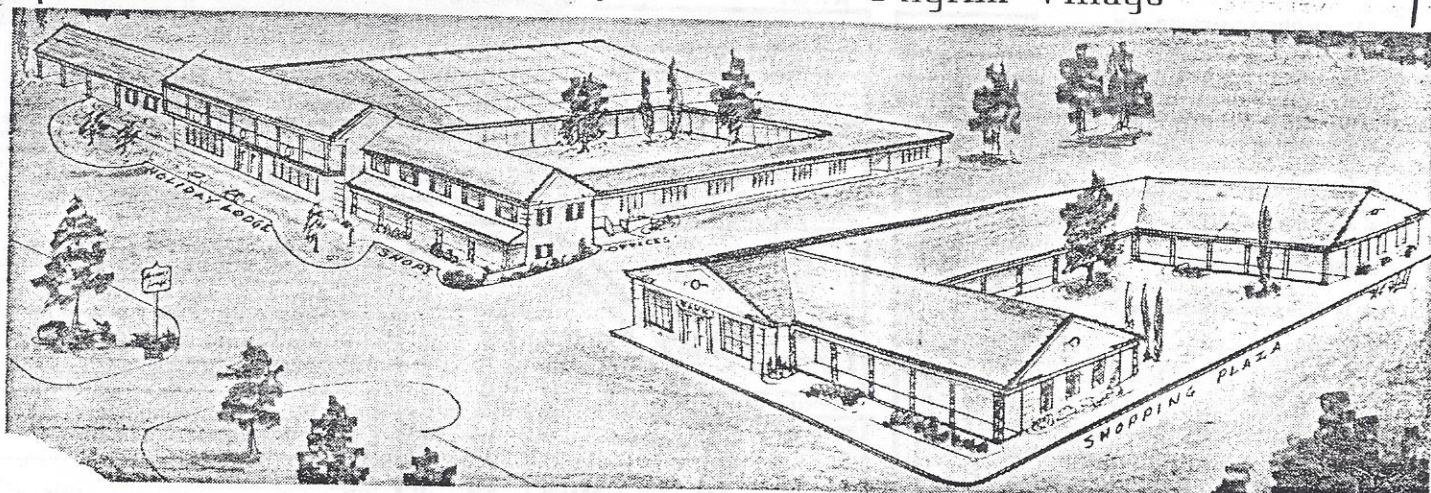
homes and excavation of the lake, sewer plant and roads was taken care of by Northeast Excavating of Newbury, Ohio. Cement was supplied by the Solon Cement Co., 18081 Chilli-cothe Rd.

When it came to lumber and millwork, the "lumberman" was called. That's United Lumber Co. out at 19000 Miles Ave. Fast and careful delivery is the rule with them. The roofing was handled by Art Segedey, owner of Art's Residential Roofing Co. Steve Preckler Floors of Mentor, Ohio (BL. 5-8448) did a fine tile job in the homes. Peter Kinsey supervised promotions for the builders.



CONSTRUCTION SPECIFICATIONS CONSULTANTS CHAGRIN FALLS ED. 8-5323
ENGINEERS... ARCHITECTS... CONTRACTORS...

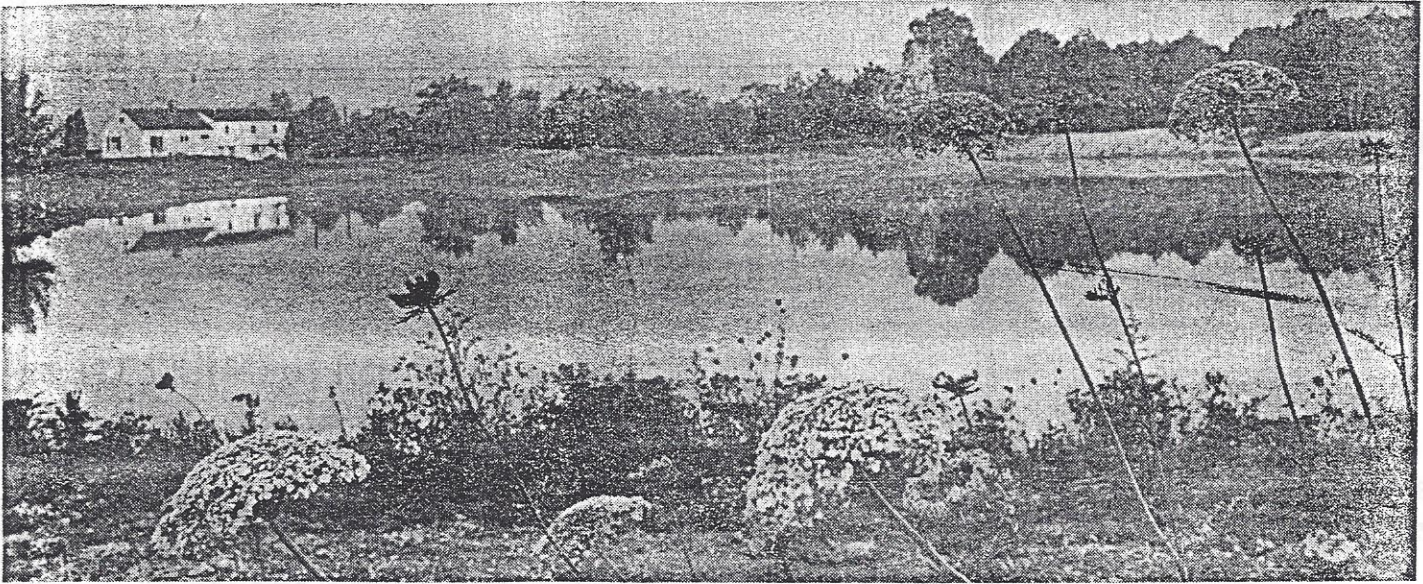
Community Planners for Pilgrim Village



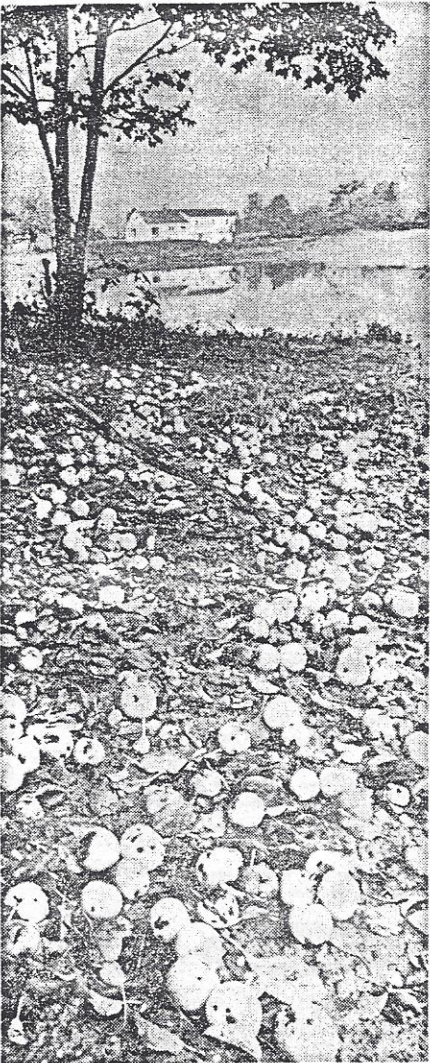
NOW LEASING!

HOLIDAY LODGE & SHOPPES Pilgrim Village DESIGNED by CSC Inc.

Builders Blend Woods, Lake in Custom Project



BLAZING FALL COLORS of wooded Pilgrim Village are mirrored in the first of two lakes to be built in the club-type community.



WINDFALL APPLES from old orchards on the shores of Lake Taylor decorate the autumn landscape in 500-acre Pilgrim Village, in Bainbridge Twp.

6 Models on View in Pilgrim Village

By **ROBERT BORDNER**
Pilgrim Village puts its first six completed homes on display in Bainbridge Township tomorrow.

East of Chillicothe Rd., a couple of miles south of U. S. Rt. 422, the 500 acres of orchards, meadow and scenic Geauga County sugar bush is the site of a club-like community.

Lake Taylor, named for Howard Taylor, president of Pilgrim Village Corp., already reflects the blazing colors of the open woodlands.

Norvel E. Hill, presi-

dent of Construction Specifications Consultants Inc., and director for the development, offers choices now among dozens of lakefront lots or more secluded wooded ones.



BORDNER

All One-Acre Lots

Of 300 lots all larger than an acre in the development, there are 107 in the first phase improved with natural gas, electricity, sanitary sewers, central sewage treatment, and paid-for pavement.

Homes are all to be custom-built in the \$20,000 to \$50,000 class. Lots range from \$4200 to \$7200 depending on topography

and view.

The Pilgrim Club will maintain and manage the lake for swimming, boating, fishing and skating. A second lake and an outdoor pool to be built next summer also will be given to the club. Park, picnic and playground areas will be managed by the club, too.

Shopping Facilities

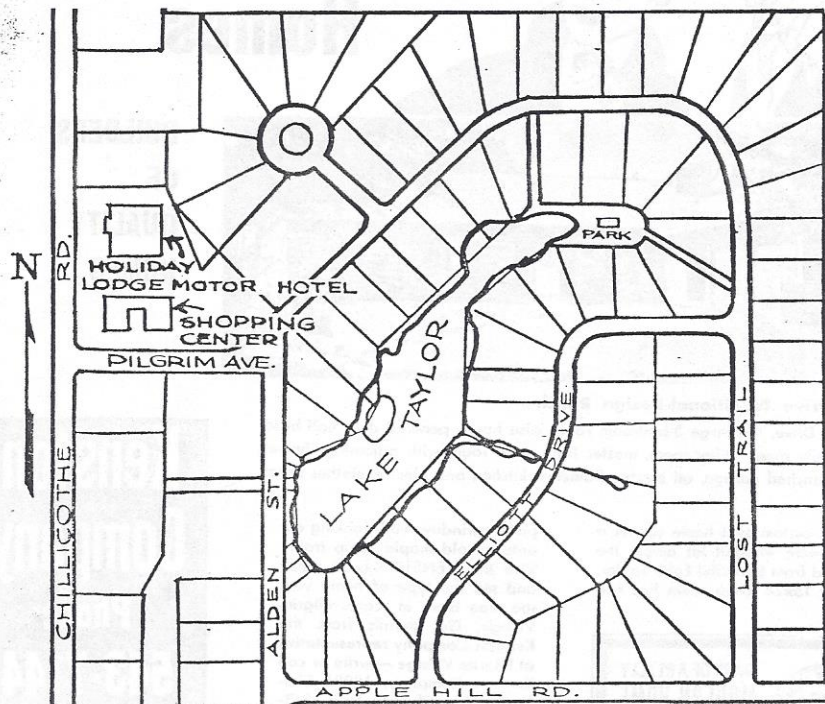
A \$300,000 shopping center and a \$300,000 Holiday Lodge Motor Hotel will serve Pilgrim Village. Inwood Corp. is handling the commercial developments.

Four of the six model homes on show tomorrow

already are owner-occupied. These owners are participating in the event.

All homes to be built must be to Pilgrim Village specifications aimed at protecting the homeowners. None can be placed closer than 20 feet from a side lot line. There also are set-backs from both street and rear lot lines.

Mrs. Fred Siegrist, office manager for Construction Specifications Consultants Inc., has her office in her home at 55 Lost Trail, on Lake Taylor, and is available also by phone, 543-9797 Chagrin Falls.



PILGRIM VILLAGE MAP shows the first of three major sections along with the sites of the Holiday Motor Lodge and the shopping center

that are to service the Bainbridge Twp. development.

Only the **FINEST** in Kitchen Cabinets
AT Pilgrim Village
SCHEIRICH
BRONZEGLOW BIRCH
 by
KEENEY - SCHWANK
 & ASSOC., INC.

distributors of the finest products
 in the kitchen equipment field

9800 Madison

631-2990

For a custom home on a choice
 site in Pilgrim Village call on us
 at no obligation to you. Our
 building plans are co-ordinated
 and approved by Pilgrim Village
 Corp.

"Homes of Quality and Distinction"

R. F. Knowles, Builder

KL 3-1951

CH. 8-5195

 **REMCON**
 LOW VOLTAGE
 REMOTE CONTROL
 SWITCHES
 and ELECTRIC WIRING by
INDUSTRIAL
CREST ELECTRIC
COMPANY
 RESIDENTIAL - COMMERCIAL - INDUSTRIAL
 SERVICE REPAIRS
 ELECTRIC HEATING
EV. 1-8900
 NO JOB TOO LARGE OR TOO SMALL

Why use an umbrella?



Carey
 FIRE-CHEX
 STA-SEAL TAB
 SHINGLES
 With 25-Year
 Surety Bond

- Roof Repairing
- Reroofing
- New Spouting,
Cleaning, Repairing
- Chimney Rebuild-
ing, Repairing

ART'S
RESIDENTIAL
ROOFING

Established in 1941
 Art Segedy, Proprietor
 7707 Country Lane

247-7722
 Kingswood 3-4403

NEW 1963 COLOR TV AT PILGRIM VILLAGE



ZENITH
COLOR TV

No Printed Circuits for
 greater dependability!

ALL CONNECTIONS ARE
 HANDWIRED, HAND SOLDER-
 ED. NO PRODUCTION SHORT-
 CUTS!

THE TALBOT, MODEL 5027.
 FINE FURNITURE, CONSOLE
 STYLING. STARTING \$589.95
 AT

BRUSH FURNITURE CO.

5195 MAYFIELD RD.

HI. 9-1500

NEW! **BARNES**
405 SERIES

Submersible Water Systems!
 AT PILGRIM VILLAGE

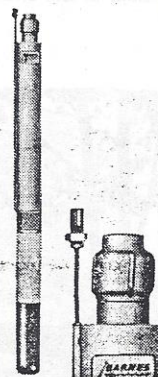
- Pumps under water
- More water — more pressure
Up to 895 gals. per hour
- Oil lubricated, ball bearing
motor costs less to run
- Exclusive "Teflon U-Cup Seal"
stops flow back, cuts water bill

CLEAN - FRESH - HEALTHY WATER
 ALL THE TIME AT PILGRIM VILLAGE

INSTALLED BY

JAMES GILES
 Plumbing & Heating
 CHAGRIN FALLS, OHIO

DISTRICT SALES:
 A. R. COLEMAN



See Kenston Company's
Pilgrim Village
Homes

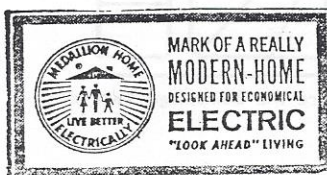


Elliott Drive Traditional-Design Ranch

On Elliott Drive, this large 3-bedroom ranch also has a paneled den, half-base-
 ment, family room, utility room, master bath, mud room with adjoining shower,
 2½-car attached garage, all electric flameless kitchen and electric clothes dryer.

This custom-built home sits on a
 1½-acre wooded lot across the
 road from beautiful Lake Taylor.
 The 15x24 living room has two

picture-window walls looking out
 onto an old maple syrup trail.
 Visit this KENSTON-built ranch
 and see the type of home you,
 too, can have in scenic Pilgrim
 Village. Get details from the
 Kenston Company representative
 at Pilgrim Village — write or call
 Kenston Company, 18081 Chillicothe Rd.,
 Chagrin Falls—543-7144.



BUILDERS
OF
QUALITY
HOMES

Kenston
Company
 Phone
543-7144
 18081 Chillicothe Rd.
 Chagrin Falls, Ohio

BEFORE YOU BUILD
OR BUY ... LOOK FOR
THE PELLA WINDOWS

BUYING?

Ask the man if the home you're looking at has Pella Windows. If it does, it is a good indication that the builder is using quality materials. Over the years Pella Windows have been a mark of quality.

BUILDING?

If you're planning on building a new home, by all means give careful consideration to the appearance, convenience and construction of the windows you will eventually choose. There are so many outstanding features about Pella Windows that you must see for yourself. BUT the most convenient of all Pella advantages is ROLSCREENS.

Imagine owning a home fully furnished with screens that roll up and down like window shades! ... Screens that NEVER have to be taken down, stored, painted, etc.

Dual glazing eliminates the need for old-fashioned storm windows.

Remember poor windows can ruin the best home. You'll never be sorry you decided on Pella Windows.

COMPARE IN FULL
 SIZE BEFORE
 DECIDING VISIT
 OUR DISPLAY
 ROOMS.



EAST: 19801 MILES AVE. (Main Office) GR 5-0400
West: 20160 CENTER-RIDGE ROAD 333-1800
Akron: 720 E. GLENWOOD AVENUE PO 2-0081
Mansfield: 187 MARION AVENUE LA 4-1831

Open Thurs. Eve. to 9, Sat. 'til Noon

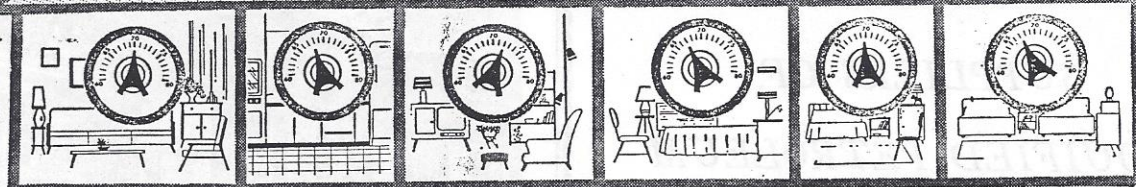


Pilgrim Village Homes

USING THE NEW JET-HEET SYSTEM

Clean . . . Comfortable living.
High efficiency of operation.
Absolute cleanliness. Minimum of heat loss.
Assured fuel savings. Lower installation cost.

**Individually
controlled comfort
in every room — Winter and Summer**



USE A COMPLETELY NEW APPROACH TO BUILT-IN YEAR ROUND HOME COMFORT

THE FIRST REALLY NEW DEVELOPMENT IN 30 YEARS. IT'S CALLED THE JET-HEET SYSTEM. IT'S DIFFERENT — IT'S SIMPLE — IT'S MODERN AS THE JET AGE ITSELF. THE JET-HEET SYSTEM IS IN REGULAR USE AT THE SOUTH POLE — WHERE IT GETS DOWN TO 100 DEGREES BELOW ZERO. SO YOU KNOW IT'LL DO A JOB IN YOUR HOME.

AND . . . with the Jet-Heet system, you can easily add air conditioning, now or later, with no structural alterations required. Use the same ducts and registers, simply add the companion Jet-Cool air conditioner. Now you, too, can have perfect home comfort! No need to be burdened with "horse and buggy" heating in the jet age. Jet-Heet answers your heating needs, whether in a new or older home, single-level or multi-level, summer cottage, converted farm house, or multi-family home.

SOLD & SERVICED BY

ALLIED OIL COMPANY

A DIVISION OF ASHLAND OIL & REFINING COMPANY

Fuel Oil Specialists

STANDARD BUILDING
P. O. BOX 6479
CLEVELAND 1, OHIO.

You can have a warm-hearted home all winter long with Allied Fuel Oil.

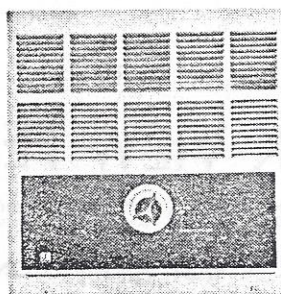
Jet-Heet oil fired equipment—Heating oils—Oil Burner service.



**STARTS CLEAN!
BURNS CLEAN!
STAYS CLEAN!**

Unique "Aspirating" Registers with built-in thermostats.

Each Jet-Blend wall register "breathes" in cool air and blows out warm air. The special thermostat, opens and closes the register to blend exactly the right amount of cool and warm air to the desired room warmth. The thermostatic register in each room has a range of 63 to 77 degrees F., and may be adjusted to maintain any temperature within these limits.



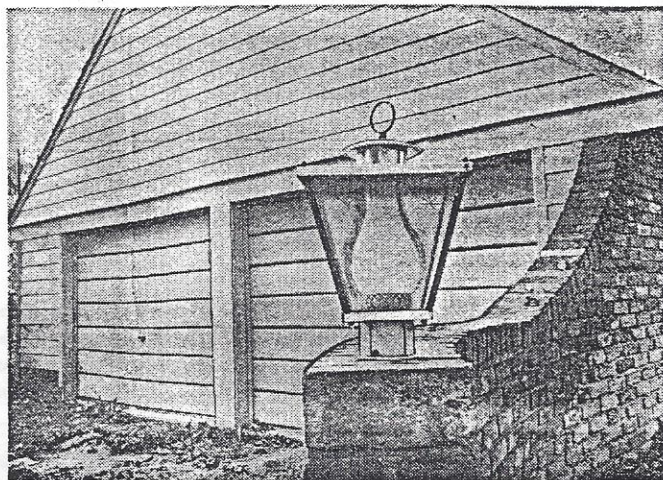
Pilgrim Village Homes

CHILlicothe RD., SOUTH OF RT. 422

PILGRIM VILLAGE

OPEN ALL DAY
SATURDAY
AND
SUNDAY
TILL 7 P. M.
6 MODEL HOMES

OLD BRICK wing wall leads to double garage and forms the first-floor front wall of the model open this weekend at 18179 Chillicothe Rd. Builder is Paul Ternovacz of Hiram. Realtor is Lyndall Hughes of Chagrin Falls. Price is \$33,900.



FRAMGAS CO.

SUPPLIERS OF
LIQUIFIED PETROLEUM
GAS

to

PILGRIM VILLAGE

111 Bainbridge Rd.

Chagrin Falls, Ohio

CHestnut 7-7383

FIRST MODEL—Early American ranch on Pilgrim Ave., just off Chillicothe Rd., was built by Carney & Herr of Hiram, and is shown this weekend by Lyndall Hughes of Chagrin Falls. Price is \$33,900.



COLONIAL SIGN and rustic rail fence indicate the tone of the new subdivision in the Geauga County sugar bush country.

2 Pilgrim Models Ready

Two of the six model homes on display at Pilgrim Village, Bainbridge Twp., are ready for occupancy according to Norville E. Hill, director for the corporation.

The other four are already owner-occupied, but will be opened to the public Sunday because residents are pleased with the new community.

Will Show Model

Lyndall Hughes will show the model at 18179 Chillicothe Rd. It is a traditional brick-and-frame one-and-a-half story, with four bedrooms, two baths, two fireplaces, family room and full basement with outside entrance.

The other model on the south side of Pilgrim Ave., just off Chillicothe Rd., is a Cape Cod frame with full basement, four bedrooms, two baths, recreation room and built-in oven, range, disposer. There is a charcoal arch in the family room for grilling indoors. Hughes is showing this one, too.

Both have attached two-car garages.

Home Financing
For
Pilgrim Village

BY

PARK VIEW FEDERAL

SAVINGS AND LOAN ASSOCIATION

50 EAST WASHINGTON ST.

CHAGRIN FALLS, OHIO

WHAT: Pilgrim Village, custom home development. Six models, four owner-occupied, will be on display.

WHERE: In Bainbridge Township, east of Chillicothe Rd., two miles south of U.S. Rt. 422.

WHEN: Models are open all day Sunday.

SPECIAL FEATURES: Man-made lake, another going in; 500 acres of orchards and meadows for country living; all city improvements in and paid for by the builder.

CH. 7-7307

Lodge Will Settle at Pilgrim Village

Holiday Lodge, a \$300,000 resort-type motor hotel, with special emphasis on year-around swimming, will offer facilities for guests of all ages.

Inwood Corp. of Cleveland, Sandy Lavin, president, is building the Lodge in the northwest corner of Pilgrim Village.

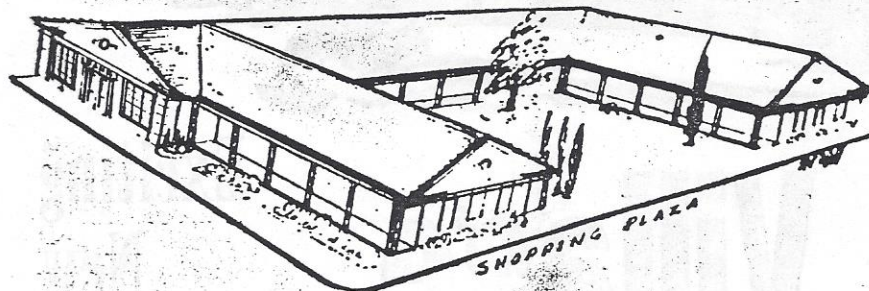
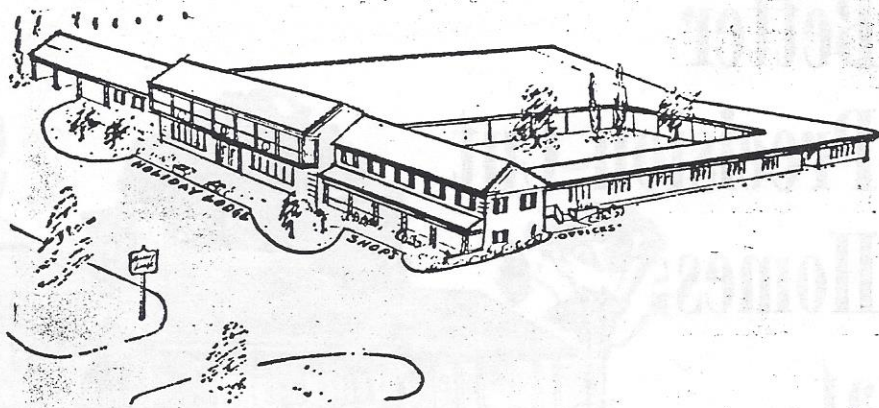
Party and assembly rooms, an indoor ballroom, outdoor dance terrace, restaurant and snack bar are included in the plans.

To avoid room rental

expense for Village residents, and to make the swimming and community facilities available to the local school districts, there will be locker facilities with some form of membership requirements.

The pool will be a 35x75-foot AAU standard, heated, and supervised by instructors.

HOLIDAY LODGE at Pilgrim Village will serve local residents on a club membership basis as well as the motoring public.



SHOPPING CENTER FOR PILGRIM VILLAGE is to be built for Inwood Corp. of Cleveland as a \$300,000 commercial service for residents of Bainbridge Township's new Pilgrim Village. Site is on the 12-acre northwest corner of the development, adjacent to the new \$300,000 Holiday Lodge, which will be constructed first. Both have access from Chillicothe Rd., about two miles south of Rt. 422, which is to be re-located as a freeway into Cleveland.

Aircraft Principle Used in Homes' Heat Systems

A new, high-speed, small duct oil-burning heating system manufactured by Jet-Heat Inc. of Englewood, N. J., is a feature of the homes in Pilgrim Village that go on show tomorrow.

Using the jet aircraft principle, the fuel is burned at some 200 degrees hotter than ordinary. A high-velocity heat exchanger transfers this to the air pumped to each room.

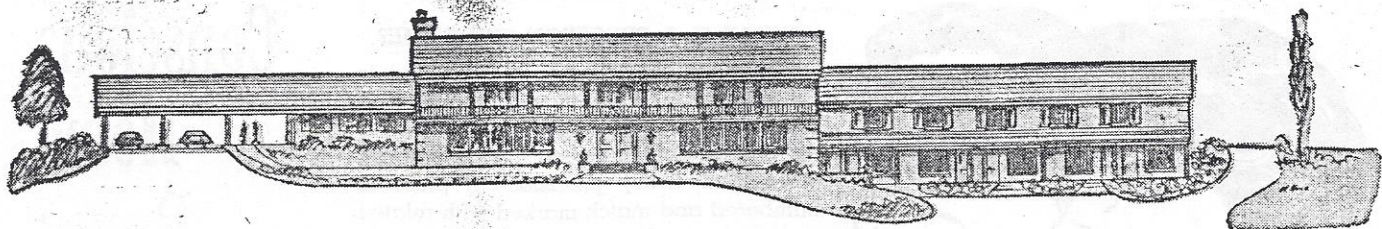
Small, heavily-insulated tubes, only two inches in inside diameter, distribute the hot air at high speed, instead of the lower speeds of the large duct type of system.

These tubes are flexible and can be snaked through walls, even in homes already completed.

Each room has its own thermostat-controlled air blender that takes in cool air from the floor of the room, mixes it with the high temperature air delivered from the furnace, and delivers the heat desired to the upper part of the room.

New HOLIDAY LODGE at Pilgrim Village

by Innwood Corporation Bainbridge Township



Complete Family Recreation Facilities

- INDOOR POOL
- RESTAURANT
- CABANAS & ROOMS
- DANCE PATIO
- STEAM ROOMS
- OTHER RECREATIONS
- ASSEMBLY ROOMS
- PRIVATE PARTIES
- OFFICE SPACE
- CUSTOM SHOPS

Adjacent to shops and spacious parking

For information on office space and memberships

Call: EV. 1-8900 or Write: 4703 Anderson Rd.

Cleveland 21, Ohio

35'x75' AAU Indoor Pool
built by

Bel-Aire Pools

of Cleveland
10311 Barrett Ave.
UL. 1-4780

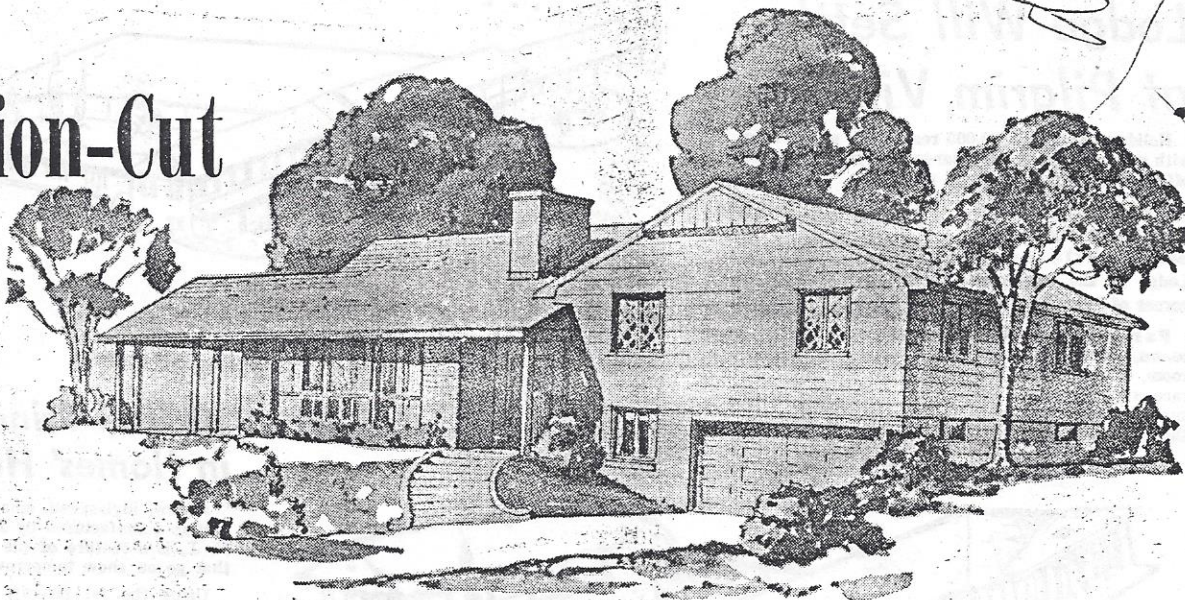
HOLIDAY LODGE

Designed by

CONSTRUCTION SPECIFICATIONS CONSULTANTS, Inc.

36 Sugarbush Lane, Chagrin Falls, Ohio

Better Precision-Cut Homes at



Pilgrim Village

- **FINEST MATERIALS**
Kiln-dried lumber and only well known quality building products
- **COMPLETE HOUSE PACKAGE**
No extras to buy. They are delivered in the package when needed.
- **EASILY FINANCED**
Construction to suit the highest building regulations.
- **SAVE TIME AND DOLLARS**
Minimum labor costs, controlled construction costs.

4-LEVEL, 3-BEDROOM HOME
2 FULL BATHS
2-CAR ATTACHED GARAGE
BUILT-IN EXPANSION SPACE
FINISHED FAMILY ROOM

FEATURING

Hotpoint

FLAMELESS ELECTRIC APPLIANCES

WHAT IS A PRECISION-CUT HOME?

Every piece of lumber is precision-cut to the architect's plan to master jigs and templates by power tools. All the waste—all the cutting and fitting on the job site are eliminated. Every precision-cut piece is numbered and match-marked with related pieces to speed erection—to reduce erection to a hammer and nail job. Scores of labor hours are saved. A Precision-Cut Home is a tighter, sturdier home with built-in savings in time and money.

See this home

at **PILGRIM VILLAGE**

MADE BY
BETTER PRECISION-CUT HOMES
8533 TRANSIT RD.
EAST AMHERST, N. J.
Phone: 634-4400



Exciting
New
Building
Method
for the
Quality
Conscious
Home
Buyer



BUILDER
AT

Pilgrim Village

CHAS. H. WITTMAN
TAYLOR-MAY RD.
543-9723 CHAGRIN FALLS

MARK OF A REALLY
MODERN-HOME
DESIGNED FOR ECONOMICAL
ELECTRIC
"LOOK AHEAD" LIVING

