

TTL Linear LED Series

ParagonLED®

10W~140W

Linear High Temperature lighting

“A real innovation in extreme environment LED lighting.”



Engineered and tested for reliable operation you can count on in temperatures ranging from **-80°C(-112°F) to 115°C (239°F)**



Game changing LED module design (see details below). Replaceable to reduce the cost of long term ownership.



PVDF corrosion resistant coating over a die-cast aluminum housing + stainless steel hardware for incredible durability. 1,000 hour salt-fog test yielded no corrosion. [ASTM B117-19/ASTM D610-08(2019)]



Chemical repellent housing to stand up in areas where industrial chemicals are used or produced.



Instantaneous activation of lighting function, without the need for standby time.

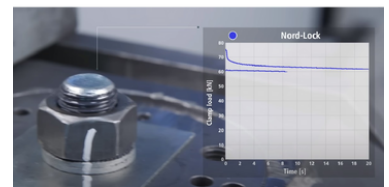
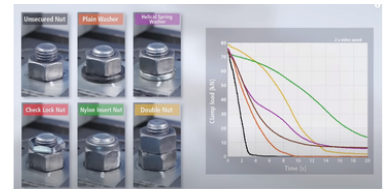


Provide better eye protection and workplace safety.

We use Nord-Lock washers for optimized safety performance.

NORD-LOCK
PART OF THE NORD-LOCK GROUP

Nord-Lock wedge-locking washers consistently outperform alternative locking methods when it comes to securing bolted joints. This is proven by the results of thousands of Junker tests carried out for customers all over the world by Nord-Lock engineers. When exposed to transverse vibrations underneath the bolt head, alternative locking methods such as plain washers, helical spring washers, check lock nuts, nylon inserted nuts and double nuts all show a loss of clamp load – loosening the bolt and exposing the joint to failure unless frequently retightened. So, Nord-Lock engineers would usually recommend wedge-locking washers to achieve the most secure bolted joint.



The heart of the TTL series is its revolutionary

DRIVER-ON-BOARD LED MODULE.

A marvel of engineering and innovative manufacturing processes, this proprietary module gives the TTL series outstanding light performance even in extreme hot and cold temperatures and requires no separate driver.

Over-Engineered

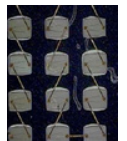
We use 12 IC current control chips when 4 would be enough for extra durability. Tested to 200° C without failure.

No Load Shedding

As modules approach their max. rated temperature, lumen output will not decrease. Reducing output at high temp. is a common occurrence with other high temp. lights.

1.2 mil Gold Wire

TTL series LEDs are connected with gold wire for enhanced durability under heavy thermal cycle stress.



No Harmonic Distortion

Quality components and advanced circuit design results in longer fixture life and no line noise generated by the TTL series.

No Inrush Current

Inrush current has been engineered out of the module preventing large line voltage drops at start-up protecting the fixture and other equipment.

Waterproof/Thermal Coating

Special silicone based coating creates a waterproof seal around the module and dissipates heat for increased durability.



SPECIFICATIONS

Voltage	120VAC / 277VAC / 347VAC / 480VAC / 600VAC / 250VDC
Wattage	10W~140W
Color Temp	4000K / 5000 K
Housing	C5M(standard) / PVDF optional
Color	Black(standard) / White optional
Lens	Flat tempered glass lens
Efficacy	125 lm/W (10W / 20W / 35W)
CRI	>70
Beam Angle	110°
Cable Gland	Stainless steel
Power Cord	AWM style 4476 _600V and 200°C rated
Surge Protection	15kv~30kv
Ambient Temp.	-80°C (-112°F) to 125°C (248°F)

LUMENS

10W	20W	30W
1,250 lm	2,500 lm	4,305lm

(one unit, 5000K)

WARRANTY

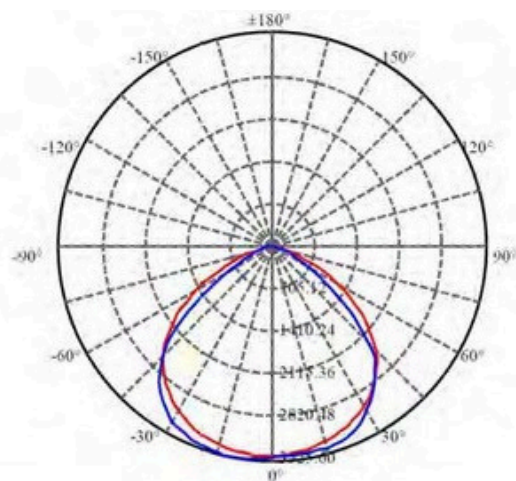
Ambient Temperature	Warranty Length
65° (149°F) Max Ambient Temp.	7 Year Limited Warranty
85° (185°F) Max Ambient Temp.	3 Year Limited Warranty
100°C (212°F) Max Ambient Temp.	2 Year Limited Warranty

Ordering Information

Example:TTL-040-50-120V-2

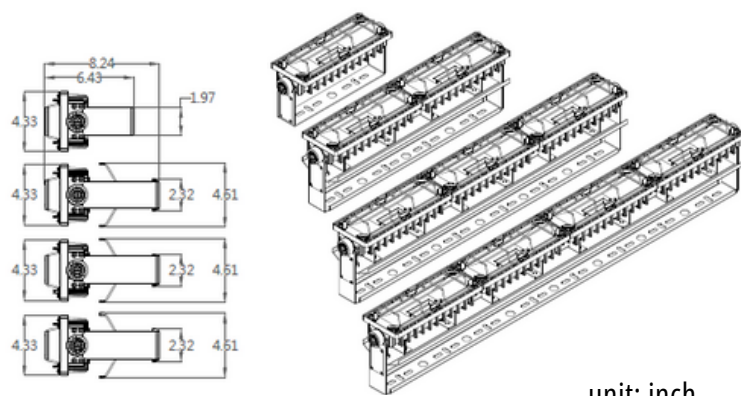
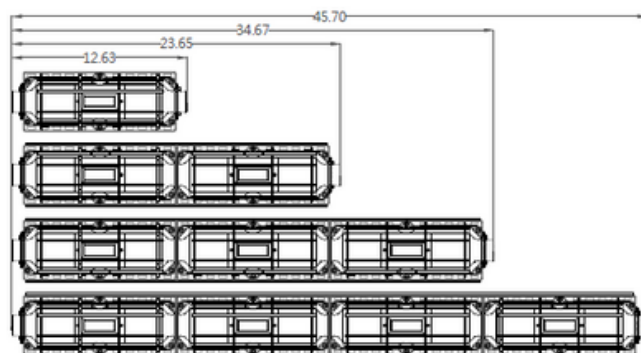
Series	Wattage	Color Temperature	Voltage	Unit
TTL	010 10W	40 4000K	120V 120VAC	1 one unit
	020 20W	50 5000K	277V 277VAC	2 two units
	035 35W		347V 347VAC	3 three units
	020 20W		480V 480VAC	4 four units
	040 40W		600V 600VAC	
	070 70W		250V 250VDC	
	030 30W			
	060 60W			
	105 105W			
	40 40W			
	80 80W			
	140 140W			

Photometrics



C0/C180: ————
C90/C270: ————

Dimensions



unit: inch

one	1.95Kg(4.30lbs)
Two	3.79Kg(8.36lbs)
Three	5.37Kg(11.84lbs)
Four	7.5Kg(16.5lbs)