

WORKBOOK FOR ELEMENTARY STUDENTS

RAINFOREST HABITAT

Created by AnnMarie Goss, age 9
August 2023



RAINFOREST

The rainforest is a hot, tropical forest that receives over 100 inches of rainfall a year.

Have you ever heard of the Equator ? It is an imaginary line that goes around the middle of the earth. Rainforest habitats are located near the equator.

There are four layers in the rainforest. Starting at the top: Emergent Layer, Canopy, Understory, Forest Floor.

In the Rainforest, there are very beautiful plants. Some of those are:

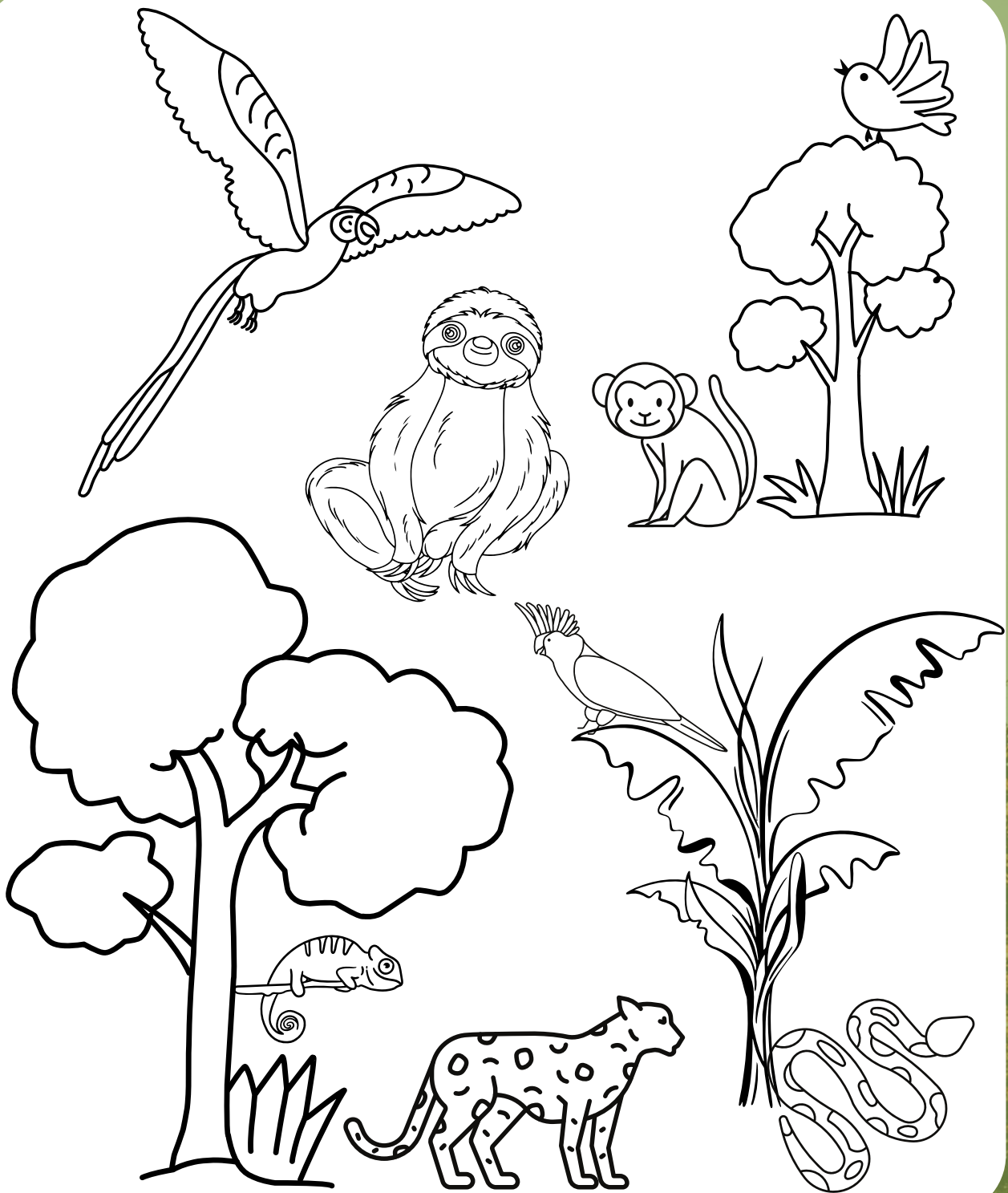
Decomposers like mushrooms,
Epiphytes like orchids and bromeliads,
and vines like lianas

Lots of awesome animals live in the Rainforest.

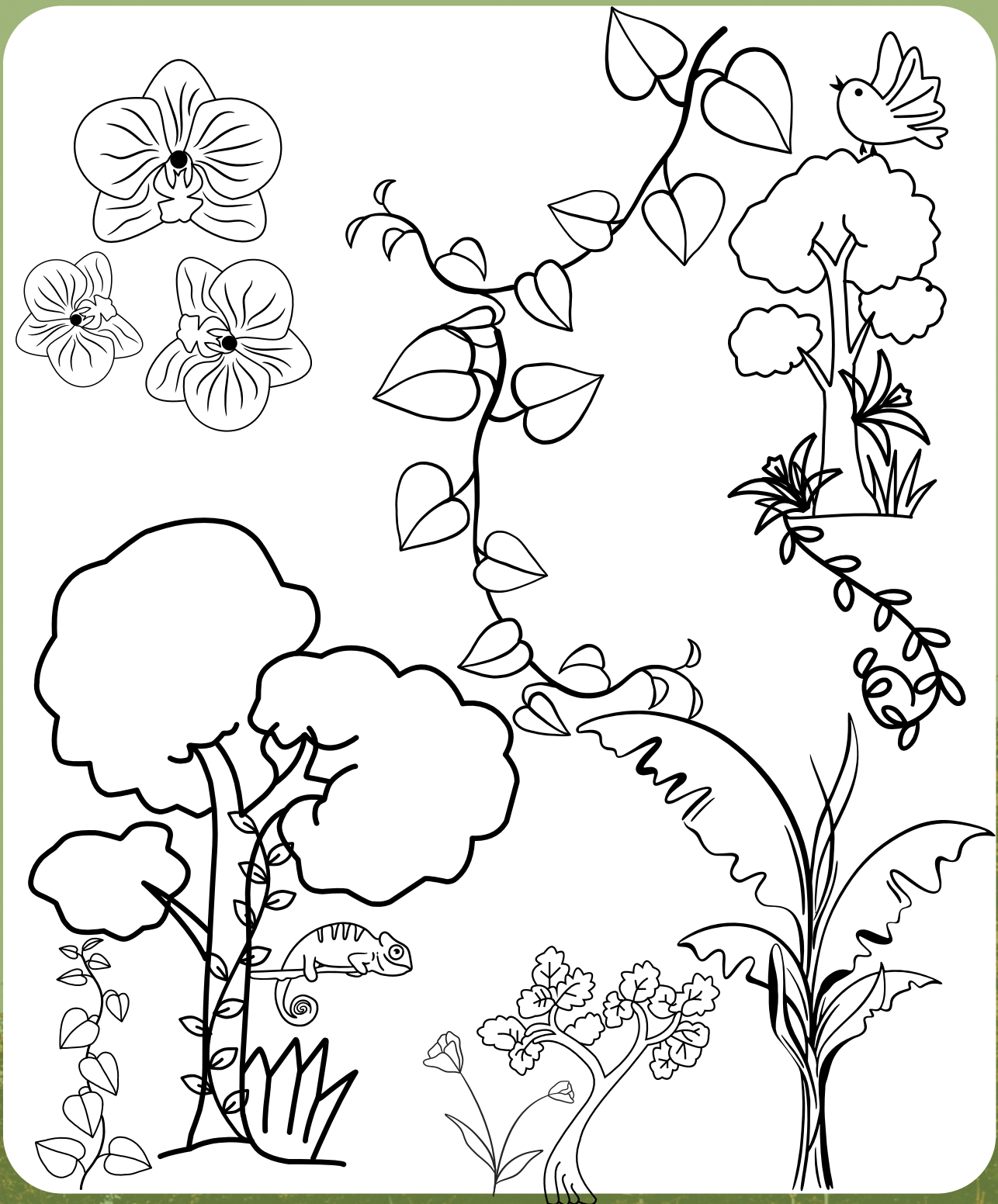
Here is a list of some of them:

Arthropods
Chameleons
Gorillas
Jaguars
Macaws
Monkeys
Pythons
Sloths

Rainforest Animals



Rainforest Plants



DEFINITIONS

Arthropod: invertebrate animal having jointed legs and a segmented body



Bromeliad: a plant having colorful flowers and long, thick leaves that collect rain water for animals



Canopy: the layer above the understory that consists of leaves and branches



Chameleon: a lizard who can change colors to blend in with its surroundings



Decomposer: an organism or fungus that eats dead material



DEFINITIONS

Emergent Layer: the highest layer that is made by the tops of tall trees



Epiphyte: plants that grow on other plants without harming them



Forest Floor: the bottom layer that consists of rich soil, dead leaves, and other material



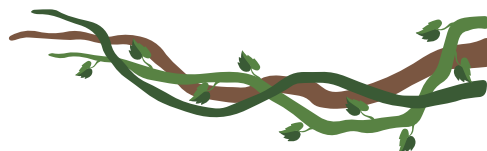
Gorilla: a large, intelligent ape with long arms who walks on it's knuckles



Jaguar: a large cat with a yellowish coat and black spots



Liana: a woody vine that climbs up trees

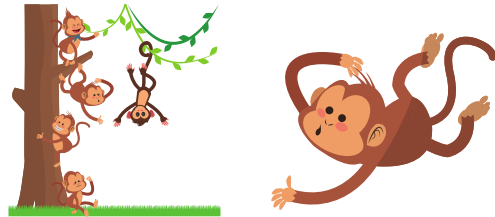


DEFINITIONS

Macaw: a long-tailed parrot with bright feathers



Monkey: a small primate with a long tail who typically lives in trees



Python: a large, nonpoisonous, constricting snake

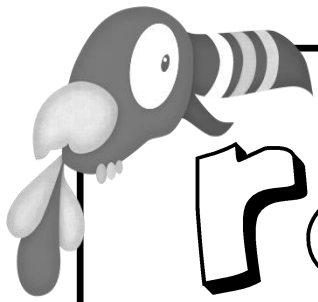


Sloth: an extremely slow-moving mammal who spends most of its' live hanging upside down in trees



Understory: the lower layer of the forest where smaller trees and plants live

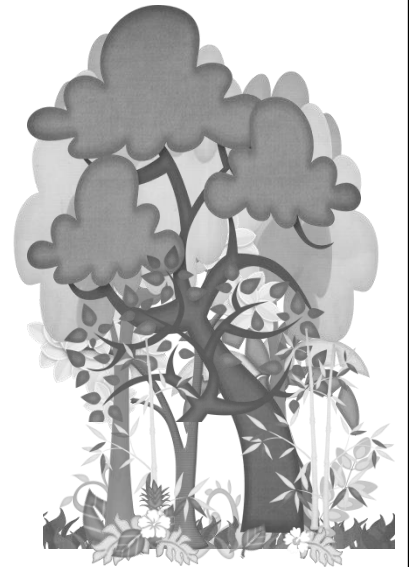




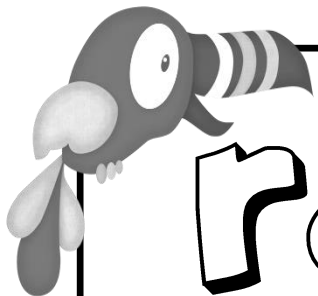
rainforest

1

habitat



The *rainforest* is a hot, tropical forest that receives over 100 inches of rainfall a year.



rainforest

1

habitat



The *rainforest* is a hot, tropical forest that receives over 100 inches of rainfall a year.



Rainforest habitats are located near the equator. The equator is an imaginary line that goes around the middle of the earth.

~Label the equator~



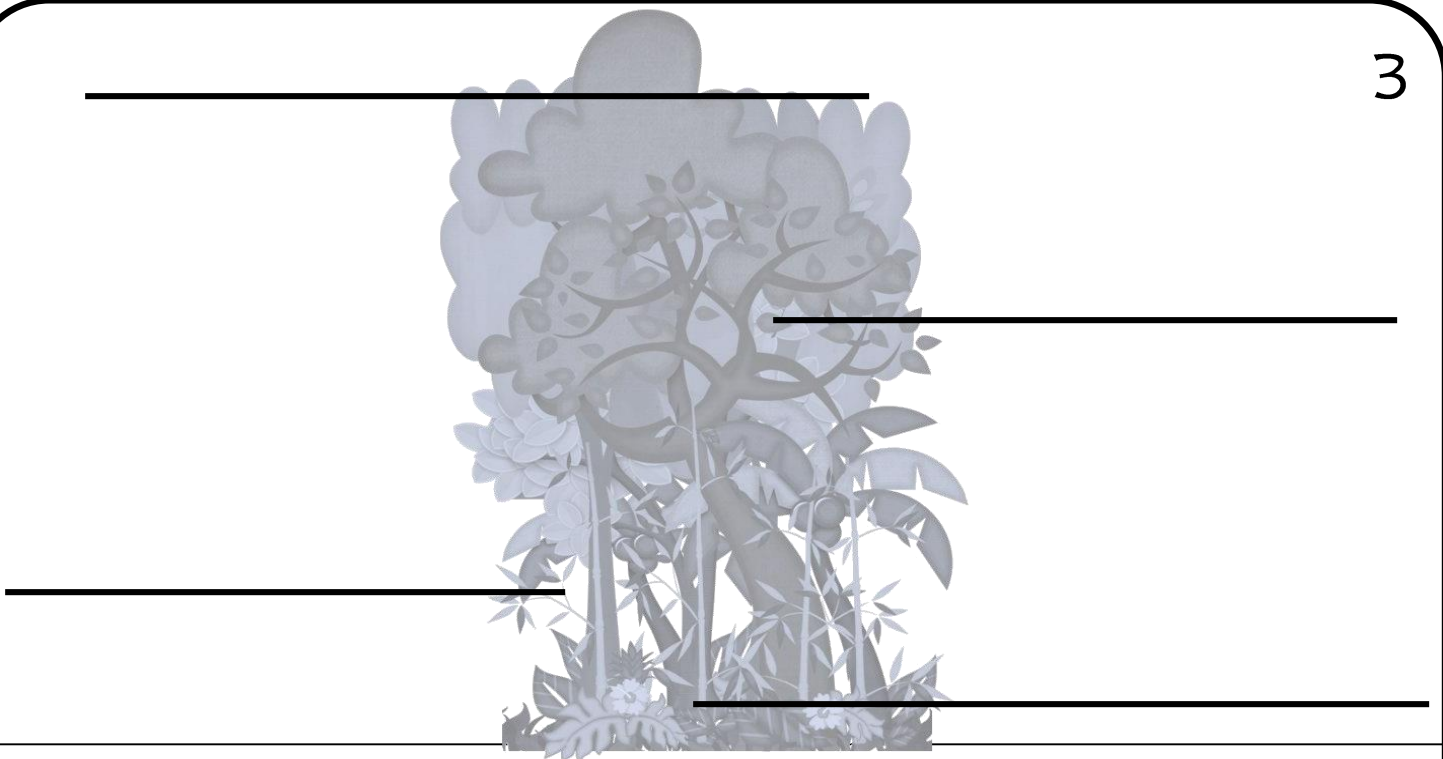
Rainforest habitats are located near the equator. The equator is an imaginary line that goes around the middle of the earth.

~Label the equator~



There are 4 layers to the rainforest; *emergent layer, canopy, understory, and forest floor.*

~Label the 4 layers of the rainforest~



There are 4 layers to the rainforest; *emergent layer, canopy, understory, and forest floor.*

~Label the 4 layers of the rainforest~

The *emergent layer* consists of tall trees reaching towards the sun. Here you will find many birds, such as the *macaw*, perched high up in the trees.

~Draw the emergent layer~

The *emergent layer* consists of tall trees reaching towards the sun. Here you will find many birds, such as the *macaw*, perched high up in the trees.

~Draw the emergent layer~

The *canopy* is the main layer of the rainforest. It forms a roof over the forest below. Here you might find a *monkey* swinging from tree to tree.

~Draw the canopy layer~

The *canopy* is the main layer of the rainforest. It forms a roof over the forest below. Here you might find a *monkey* swinging from tree to tree.

~Draw the canopy layer~

The *understory* doesn't get much light and remains very damp. It has small trees, ferns, and shrubs. Here you might find *jaguars*, *pythons*, or *chameleons* creeping among the plants.

~Draw the understory layer~

The *understory* doesn't get much light and remains very damp. It has small trees, ferns, and shrubs. Here you might find *jaguars*, *pythons*, or *chameleons* creeping among the plants.

~Draw the understory layer~

The *forest floor* is the bottom of the rainforest. Here you might find *gorillas* and *arthropods*, as well as *decomposers* which break down the dead material on the ground.

~Draw the forest floor~

The *forest floor* is the bottom of the rainforest. Here you might find *gorillas* and *arthropods*, as well as *decomposers* which break down the dead material on the ground.

~Draw the forest floor~

More than $\frac{2}{3}$ of the world's plants can be found in rainforests. *Epiphytes*, such as orchids and *bromeliads*, add amazing color to the rainforest. *Lianas* can also be found climbing their way up trees.

~Draw some plants you would find in the rainforest~

More than $\frac{2}{3}$ of the world's plants can be found in rainforests. *Epiphytes*, such as orchids and *bromeliads*, add amazing color to the rainforest. *Lianas* can also be found climbing their way up trees.

~Draw some plants you would find in the rainforest~

Name _____

Fact

Finders



1. What is the rainforest? _____

2. What are some animals that you might find in the rainforest? _____

3. What are some plants that you might find in the rainforest? _____

4. Tell about each layer of the rainforest and where it's located.

*emergent layer: _____

*canopy: _____

*understory: _____

*forest floor: _____

5. Write an interesting fact that you learned about the rainforest. _____

A large rectangular box with a decorative, scalloped border, intended for writing an interesting fact about the rainforest.

Name _____

Rainforest Habitat

Use the word bank below to label the layers of the *rainforest*.

canopy
emergent layer
forest floor
understory

