

Rock



House



- Guest Manual
- Info You Need
- Local Attractions
- Safety Info

Rock



House



A Little History

The Rock House was built by Louie and Sandy for their 9 year old daughter Clara in 2010.

Many slumber parties ended in screams when a raccoon jumped onto the roof or a thunderstorm interrupted the non-slumbering pre-teens.

After Clara grew up and went to college The Rock House was rennovated, the outdoor tub and outdoor kitchen were added and wi-fi installed. Its new life as a nature retreat for guests has been joyful.

Your hosts: Sandy Maine began her career as an Adirondack-Wilderness guide in the 1990's and worked for private individuals as well as SUNY Potsdam Wilderness Workshop. She also developed and ran the wilderness Outdoor Recreation with

Education (ORWE) program for youth in Massena in the 80's. As a compliment to her guide services she developed a body care manufacturing business and has since become a prominent influence not only in soapmaking as a craft, but also in inspiring those who shared her passion to turn their craft into thriving entrepreneurial ventures. Sandy is currently the founder and owner of Adirondack Fragrance & Flavor Farm - where innovative "farm-to-body care" products are happening in her boutique factory just down the road!!

Lou Maine has been trapesing around the Adirondacks and the St. Lawrence Valley as a Land Surveyor for many years. Lou is well versed in local history, carpentry, alternative energy, star gazing, and rehabbing his antique canoe collection.



Property Overview

The Rock House was fully renovated in the summer of 2019. It is supplied with electric power from a solar and battery storage system with automatic generator back up. Hot spring water for bathing and washing is supplied by an energy efficient on-demand hot water heater.

For your good health and enjoyment a Finnish sauna with a shower is located behind the outdoor tub in a small building called The Hawk House Sauna. Let Sandy know if you would like it fired up!

There is an outhouse. It is clean and pleasant.

Refrigeration is supplied by a small electric refrigerator and there is also a microwave. You may also enjoy the firepit for grilling or sitting around the campfire.

In 2021 we added a nice pavilion with a fully equipped outdoor kitchen and picnic area.

You will be able to access WiFi at the cabin.
The password is: rockhouse

Setting: The Rock House is located in the Northwest corner of the Adirondack Park. We are next to the St. Lawrence County recreational trail system.

Enjoy our 160-acre parcel in a perfectly private setting with many interesting birds, huge trees, mosses, ferns, mushrooms and river creatures like beaver, trout and otter. There are over four miles of marked private trails for hiking, skiing, or snowshoeing along the river and with loops into the woods. With Potsdam only 15 miles away you have the best of both the civilized and the natural world when staying at our cabin.

Though we are avid pet lovers we have chosen to not allow pets. We look forward to hosting guests who will enjoy the natural solitude, privacy and esthetic comforts of The Rock House, river and beautiful forest trails on our tranquil 160-acre property.

Though you are assured complete privacy during your stay, your hosts Sandy and Lou Maine are only a call or text away should you need any assistance.

(315) 212 7143 cell (315) 328 4129 land line



Checking in & out

At Check - in:

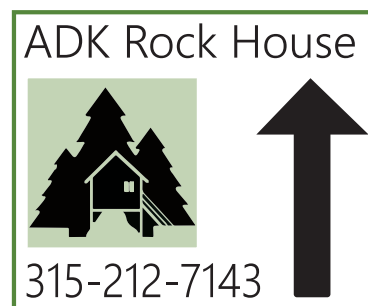
Your hosts, Sandy or Lou, will greet you at their home (Green Farm house) at 1150 Sylvan Falls Road, Potsdam, NY, at a mutually agreeable time. You can call or text (315) 212-7143 if you plan to be early or late. You will see the logo for the ADK Riverside Cabin on a sign post at entrance of driveway.

Sandy or Lou will show you to The Rock House. If you prefer self check-in you will find The Rock House unlocked. It's located behind the Farm house at 1150 Sylvan Road. Look for the sign for The Rock House.

- Check in is from 3-9 pm unless other arrangements have been made.
- Check out is at 11AM. Feel free to remain and enjoy the trails until 3pm
- For Self Check-in contact Sandy before arrival
- Cancel within 24 hours of check-in and the first night is non-refundable.
- Cancel up to 24 hours before check-in to get a refund, minus Airbnb service fees.
- Airbnb service fees are refunded only if the reservation is cancelled within 48 hours of booking and the guest has not checked-in yet.

At Check-out:

- Please remove sheets and pillow cases from beds and place them in a pillow case along with any used towels.
- Please bring laundry and any garbage to farm house porch.
- Please wash up your dishes and clean the grill and grilling utensils if you used them
- All food waste should be placed in the compost container.
- Please remove any food or drink from the refrigerator that you brought to the cabin.
- Leave the door UNLOCKED and windows closed
- Turn OFF lights





Creature Comforts

Provided:

- Fresh linens, comforters, blankets & pillows.
- Towels, soap, shampoo, conditioner. Toilet paper.
- Firewood for campfires is \$5 per square
- Lantern
- Spring water for drinking
- Verizon Cellular (3 bars), Wifi password: rockhouse
- Sauna (wood fired) with shower
- Outdoor tub with hot & cold running water and privacy fence

Remember to bring:

- Raingear, swim wear, beach towels, footwear suitable for enjoying the woods
- Hats, gloves, outerwear
- Fresh foods / cooking & eating utensils
- Cell phone charger
- Passport or enhanced license if planning to visit Canada
- Bug spray, sunscreen
- Day pack



Off Grid Living and Other Things to Know

- Futon Couch folds out into double bed. Linens, pillows, and blankets provided.
- Solar panels will charge 8 deep cycle batteries and will provide for your electrical needs. If we have a lack of sun and the batteries need to be charged you will may hear a generator running.
- Please avoid using hairdryers, curling irons, toasters or any device that generates heat as these will run the batteries low and possibly cause an electric shut down.
- The electric heater may be turned on for a short time (10 minutes) to warm, the cabin if needed. Do not leave it on for long or it will deplete stored energy. Repeat as needed.
- If there is a power outage use candles and / or flashlights and your hosts will reboot the system. This is a rare occurrence but not unheard of when living off grid.

Handling food and other waste:

- Do not leave food outside The Rock House even if it's in a cooler. Clean the grill and kitchen before retiring for the night and douse the firepit with water until completely out.
- We suggest putting coolers in your car for the night.
- Raccoon are very sly and will maraud for food at night Please help us be very uninteresting to wildlife by not leaving food outside!!
- Bear sitings are very rare. If you do see a bear it's just passing through. Keep your distance and you'll be safe. ADK bears are vegetarians and only attack if provoked.
- Please do not throw food, plastic or paper waste into the outhouse pit.
- Please do not burn plastic or foil in the fire pit.



Safety Information

Trails & River Tram: We will provide you with a map of over 4 miles of private woodland trails which are well marked and maintained. Enjoy the use of our trails for hiking, fishing and swimming. Enjoy kayaking or canoeing on the river. Kayaks and gear are provided. (See map for location) All recreational activities are at your own risk. Your cell phone will probably not work once you get out of range of the cabin so plan accordingly.

Campfires: Fires must be started with paper, and kindling... never kerosene or gasoline. Please keep your fire reasonable in size. Split and seasoned firewood is provided at The Rock House fire pit. All fires must be extinguished with water before retiring for the night. Firewood is \$5.00 a square or feel free to collect your own from dead & down trees in the surrounding forest. If there is a wind, fires are not allowed.

Fire Extinguisher: Located near refrigerator.

First Aid: There is a first aid kit on bottom shelf in cabin. For emergencies contact 911 and your host.

River: Depending upon rain levels and time of the year the high water level will be as much as 4 feet and low water as little as 2 feet deep. Normally the water levels in JUNE – SEPT are 2-3 feet. Enjoy the rush and excitement of spring breakup in April and May but do not enter the water during that time unless you are a kayaker familiar with Class 4 rapids.

Swim Hole: The location of the “clothing optional” swim hole is identified on your map. The water gradually deepens from the dock at 1 ft to the rock at 6 feet deep. The water is usually very comfortable for swimming June 1- September 30. If the tram is on the island side please return later, other guests may be using the swimming hole.

Kayaks: 2 kayaks and gear are located on the Tram Trail (see map). Guests in our 3 cabins are welcome to use them. If the kayaks are not there stop back later! Enter river and go downstream for approx. 1 mile. When you see a bridge turn around and go back! There are class 4 rapids past the bridge which should only be attempted by VERY experienced white water kayakers.



Out and About

Canoeing and Kayaking

At one time the small rivers of the North Country were the focus of commerce. Today, the rivers are quiet; the surviving mills are no longer the center of activity. Few if any other areas can offer so many rivers with such easy and numerous access points. There are more than 200 rivers, ponds and lakes in St. Lawrence County and we are also part of the Adirondack Park, which boasts more than 3,000 bodies of water.

As the rivers finish their rush out of the mountains they begin but never fully settle down. Waterfalls and low water rapids are numerous along all the rivers and dams often block the way. Motor boats play in the longer sections of river but most rivers see little or no traffic.

You hardly need a guide to canoe or kayak in the area. Every stretch of river is worth exploring and usually has easy access.

Closest to home: You need only to take a short walk from The Rock House door to access a nice 1 mile kayaking experience on the St. Regis River. Head down stream until you see the bridge. Don't go past the bridge unless you want to run some class III rapids! Only experienced kayakers with helmets should attempt going past the bridge!



Some other favorite options:

Lower Oswegatchie River

Starting near Gouverneur and flowing 65 miles to Ogdensburg, this section of the Oswegatchie is a gentle section. The river is wide and slow-moving here as it passes through rolling hills, rock ledges, marshes, and pasture land. There are scenic cliffs along the shore near Oxbow. There are carries at the dams and most of the rapids can be portaged or run by experience paddlers. There are various access points along the route to create varying trip lengths.

Grasse River: Canton to Madrid

Canoeing from the boat launch on Route 68 just outside the village of Canton to the dam in Madrid. This is a full-day trip of about 12 miles.

South Branch Grasse River

16 miles, 5 portages, access is off the Tooley Pond Road at various points.

Raquette River: Potsdam

The dam in Potsdam backs up the river nearly two miles and is a great place for a quick paddle or fishing. Access is in Ives Park, behind the Clarkson Inn, 1 Main Street, and there is a public parking area next to the Inn's parking.

Cranberry Lake

The Cranberry Lake region is one of the largest remote areas remaining in the State. The Lake covers 11 square miles and has 55 miles of shoreline, over 40 of which are State land. There are also 42 primitive campsites along the shoreline.

Winter sports

Snowmobiling, ATV's, Shoeshoeing, Sking, etc.

SLC Snowmobile Association

Trail Map www.slcsa.org

Other resources for XC skiing, snowshoeing and more
www.northcountryguide.com

Local Guide Services by David Burnham

GrassRiverAdventures.com

315-854-0422

HUNT . FISH . CAMP . HIKE . PADDLE



Waterfalls

Harper Falls: Harper Falls is on the North Branch of the Grasse River. View the interactive trail map for Harper's Falls Trail on STLCtrails.com/harpersfallstrail

Directions: From the intersection to the trail parking is ½ mile on the Donnerville Road which is dirt and gravel and is shared with ATV users, so please use caution as there are several blind hills and turns. Starting from Donnerville Road and walking up the river toward Harper Falls offers a relaxing trek, with a couple of hills and small creek crossings.

While walking up you may notice the path has stone walls along the edge. These are the remnants of an old sawmill. This mill was made during the time the town of Donnerville was active and running.

Stone Valley: The trails in Stone Valley is one of the most popular nature walks in the North Country. Following the shores of the Raquette River through Colton, the scenery is amazing. There are a series of waterfalls that continue for a mile or more along the trail, which extends for two or more miles. During the spring, the power of the highwater from the snow melt in the Adirondacks is impressive. In winter months expect the beginning of the trail to slippery and use caution when walking along the river.

There are a series of signs along the path describing some of the geological features of the area. To the geologists this is a unique area, the connection of the Adirondack Mountains and the St. Lawrence Lowlands. Watch for the signs posted on the trees to learn more.

View the interactive trail map for Stone Valley Trail on STLCtrails.com/stonevalleytrail

Directions: From Route 68, turn left on to Route 56 in Colton. At the Hepburn Library, turn right. There are two access points to the trails, one before the bridge near the Colton Historical Society, and one across the bridge near the Colton Fire Department. If you are coming from Route 56 north, take a left at the Hepburn Library.

Sylvan Falls: 1.5 miles on River past Sandy and Lou's farm house. Beautiful twin waterfalls, flat rocks at base to sit and enjoy!

Tooley Pond: The land along Tooley Pond Road is the Northern River Flow-Tooley Pond Tract, which is a section of the New York DEC public lands, allowing access to this simply amazing place. A 16-mile section of the South Branch of the Grasse River meanders within the tract. Along this stretch, six major waterfalls exist with a variety of named rapids. The falls include: Rainbow Falls, Bulkhead Falls, Flat Rock Falls, Twin Falls, Sinclair Falls and Basford Falls. They range from the 40 foot drop of Rainbow Falls to the gentle sloped falls at Sinclair Falls, a perfect place to have lunch. The South Branch of the Grasse has excellent kayaking and canoeing with easy carries around the falls, if you do not desire to take the express route. There is also an enjoyable hike up Tooley Pond Mountain at the southern end of the road.

In 1866 the town of Clarksboro was established near Twin Falls on the shore of the Grasse River. An iron furnace and water-run sawmill were built to support the town. The foundation of the sawmill can still be seen at the

top of Twin Falls. Iron was mined in this region until the 1950s when the mines closed because of low iron prices. Exploring this area can reveal the unique history of the County and show some of the best hidden waters.

View the interactive trail map at STLCtrails.com/tooleypond

Directions to Tooley Pond Road: From the south or east: Turn north on Tooley Pond Road from NY Route 3, about a mile west of Cranberry Lake (Right-hand turn). From the north and west: Tooley Pond Road is located three-quarters of a mile east of Degrasse, along St. Lawrence County Route 27.

Directions to the Falls: Some of the falls can be seen from the road, while others are a short walk along trails. The mileage below is for starting at the northern end of Tooley Pond Road in Degrasse. There are no parking areas for many of the falls, so one will have to pull to the side of the road as far as possible.

Basford Falls: 1.4 miles- follow trail to falls. (photo upper right). View the interactive trail map at STLCtrails.com/basfordfalls

Sinclair Falls: 2 miles- Sinclair Falls is located just South of Lake Gorge Road. There is a small information stop in the parking lot. View the interactive trail map at STLCtrails.com/sinclairfalls

Twin Falls: 3.1 miles- Before this there is a dirt road giving a good view of both falls. After this is the top of the falls, where the mill was located.

Stewart Rapids: 3.3 miles- Can be seen from the road, large turn in the river.

Bulkhead Falls: 3.5 miles- Right before turn in the road, follow old road marked no vehicles to the falls.

Rainbow Falls: 6.1 miles- Look for a clearing marked off with boulders. Follow old road to the river, cross foot bridge to island and continue walking on path until you see the falls. View the interactive trail map at STLCtrails.com/rainbowfalls

Copper Rock Falls: 8.6 miles- Look for red blaze on tree along with sign including fishing regulations. This is the beginning of the trail, follow white marked path to water and falls. View the interactive trail map at STLCtrails.com/copperrockfalls

Lampson Falls: The most popular waterfall in St. Lawrence County, is easily accessed at the Degrasse State Forest on Route 38. An impressive falls at an estimated 40 feet tall and 100 feet wide. Lampson is a shallow and broad-faced falls, which can have huge amounts of water flowing over it during peak melt season in the spring. During the summer it calms and becomes a much quieter setting. At the bottom of the falls a small beach has formed allowing for swimming and picnicking. The 15 minute walk into this area is well worth it.

View the interactive trail map at STLCtrails.com/lampsonfalls

Directions: The access for Lampson Falls is the Grasse River Recreation Area on Route 27 in Clare, just north of Degrasse. Look for the brown and yellow DEC sign at a gated road. Park on the road side and head down the dirt road.



Day Trip Ideas

There are lots of things to do in the North Country and southern Ontario. Here are selected day trips in the region.

ADIRONDACK FISH HATCHERY, 103 Fish Hatchery Rd., Lake Clear, state fishhatchery raises land-locked, Atlantic salmon, 518-891-3358, dec.ny.gov/outdoor/21664.html.

ADIRONDACK FLYING SERVICE, 27 Airport Ln., Lake Placid, 20-minute scenic flights over Adirondack High Peaks, flyanywhere.com/adirondack_scenic_flights, 1-866-439-2399.

ADIRONDACK MENNONITE HERITAGE FARM, 8778 Erie Canal Rd., Croghan, a historical farm recognized by the National and State Registries of Historic Places and built by the Moser brothers who settled in Lewis County in the 1830s. The property consists of an 1840's Greek Revival style house, two 1874 barns, granary, and garage. Today the farm is run as a historical learning center dedicated to the preservation of Mennonite faith and culture and the way of life of Lewis County farmers. 315-346-1122, mennoniteheritagefarm.com

ADIRONDACK MUSEUM, Museum's exhibits and programs tell the stories of how people have lived, worked, played and traveled in the Adirondack region since the early 1800s. Twenty buildings on 32 acres of grounds and gardens, 22 engaging indoor and outdoor exhibits, historic buildings, incredible collections, great gardens, magnificent views, and on-going programs and special events offer a variety of interesting activities for the whole family. Route 30, Blue Mountain Lake, 518-352-7311, adirondackmuseum.org May be closed in 2020 due to covid.

ADIRONDACK PARK VISITOR INTERPRETIVE CENTER, 8023 Route 30, Paul Smiths, 518-327-6241, adirondackvic.org, a 6.5-mile interpretive trail system with signs explaining ecology, summer hiking, cross country skiing, snowshoeing, exhibits of Adirondack history.

AKWESASNE MOHAWK CASINO RESORT, 873 State Route 37, Akwesasne, open 24-7, hundreds of exciting gaming machines, dozens of table games, native harvest buffet, Pair-A-Dice lounge, gift shops, buses welcome, 1-877-99 CASINO or mohawkcasinocom

ALMANZO WILDER HOMESTEAD, 177 Stacy Rd., Burke, near Malone, home of real life character of Laura Ingalls Wilder's Little House book, store, museum, 518-483-1207, almanzowilderfarm.com

AMERICAN MAPLE MUSEUM AND HALL OF FAME, 9756 St Rte. 812, Croghan; artifacts, maple syrup manufacturing equipment, logging tools, antiques; 315-346-1107; www.americanmaplemuseum.org

ANTIQUE BOAT MUSEUM, 750 Mary St., Clayton, abm.org, Over 200 antique freshwater boats, motors, and engines. Boat building classes, boat shows, speedboat rides. 315-686-4104.

AUSABLE CHASM, 2144 Rt 9, Ausable Chasm, 518-834-7454, won-

ders, nature trails, scenic vistas, rafting, kayaking, tubing ausablechasm.com.

BLUE MOUNTAIN LAKE BOAT LIVERY, Rte. 28, Blue Mountain Lake scenic boat trip, 1916 wooden launches, tours, rentals, instructions, sailing, canoeing, camping, 518-352-7351, boatlivery.com/index.html.

BOLDT CASTLE, on Heart Island, Alexandria Bay, boldtcastle.com. Accessible by boat, 120 room Rhineland castle belonging to George Boldt, begun as a gift for his wife, but abandoned at her untimely death. Undergoing magnificent restoration. 315-482-9724 or 315-482-2501.

CHATEAUGAY FISH HATCHERY, 134 Fish Hatchery Rd., off Route 11, Chateaugay, lake, brook, rainbow and brown trout. Free. 518-497-6151, dec.ny.gov/outdoor/21664.html.

CLAYTON OPERA HOUSE, performance and community center, 403 Riverside Drive, Clayton, 315-686-2200. Variety of performances throughout the summer season. claytonoperahouse.com

DOBISKY VISITOR'S CENTER, 100 Riverside Ave., Ogdensburg; nestled along the banks of the St. Lawrence River with a boater's lounge with showers and laundry facilities, meeting rooms that hold over 100 people, a large roofed outdoor deck, kitchen area, food and beverage concessions and handicap accessible restrooms. There is a marina, gazebo, "Kids Kingdom Park," tennis courts, basketball courts, skateboard park, pool, entrance for Maple City Recreation Trail - all within walking distance from the Dobisky Visitor's Center; 315-393-1980. Ogdensburg.org/facilities/facility/details/Dobisky-Visitors-Center-8

ENCHANTED FOREST/WATER SAFARI, 3183 Route 28, Old Forge, watersafari.com. Over fifty water rides and attractions including "Tidal Wave Pool" and the "Amazon," a family river ride. 315-369-6145.

EVANS MILLS SPEEDWAY, 28412 Steinhelmer Rd., Evans Mills. 315-221-9180

FORT HENRY, KINGSTON ONTARIO Both museum and spectacular historic site of 19th Century British military fortress. Experience the realm of 19th Century military life, guided tours, performances and demonstrations. forthenry.com. 1 Fort Henry Dr., off County Rte. 2, Kingston, Ontario, Canada. 1-(613)-542-7388.

FREDERIC REMINGTON ART MUSEUM, 303 Washington St., Ogdensburg; over 2,500 Remington-related items including oil paintings, bronze sculptures, published works, letters, journals, photographs, studies, watercolors, sketches, more; info: fredericremington.org/, 315-393-2425 EMERALD

Call ahead or visit website to make an appointment. Well run establishment. 518-637-1012 or 518-891-3727

FORT TICONDEROGA, 100 Fort Ti Road, Ticonderoga, (518) 585-2821. Renactments of battles from Seven Years' War and American Revolution, overlooking Lake Champlain. Museum, costumed interpreters, demonstrations, gardens, museum store, restaurant, picnic grounds. fort-ticonderoga.org

Day Trip Ideas

GREAT CAMP SAGAMORE, 4 miles south off Rte 28, Raquette Lake. Former summer home of Alfred Vanderbilt family, built 1897 by William West Durant. 27 buildings, tours, courses, retreats, 315-354-5311. sagamore.org

JOHN BROWN FARM STATE HISTORIC SITE, 115 John Brown Rd., Lake Placid. Home and burial site of famed abolitionist leader of 1850 raid on National Arsenal at Harpers Ferry, Va. 518-523-3900, nysparks.state.ny.us/historic-sites/29/details.aspx

LAKE PLACID OLYMPIC SITE, Lake Placid-Wilmington area, 1932 and 1980 Olympic Museum and Hall of Fame, video highlights, uniforms, equipment, Olympic ski jump complex, Mt. Van Hoevenberg Olympic Sports complex. (518) 523-1655 or whiteface.com/facilities.

MINNA ANTHONY COMMON NATURE CENTER, 44927 Cross Island Rd., Fineview exit 51 off I-81 near Alexandria Bay; bird walks, cross country skiing, trails, fishing. 315-482-2479 or nysparks.com/environment/nature-centers/2/details.aspx

MOHAWK INTERNATIONAL SPEEDWAY NYS Hwy. 37, Hogansburg. May through September, modifieds, pro-stocks, semi-pros, bandits, slick track enduro facebook.com/MIRtrack

NEW YORK STATE ZOO AT THOMPSON PARK, 1 Thompson Park, Watertown. Dedicated to New York's wild animals and wild places, black bears, wolverines, Adirondack fire trail. 315-782-6180, nyszoo.org/

OGDENSBURG COMMAND PERFORMANCES, 1100 State St., Ogdensburg; entertainment productions; info or upcoming schedule: 315-393-2625 or www.ILoveTheatre.org

OLD MCDONALD'S CHILDREN'S VILLAGE, North Harbor Rd., 14369 County Rte. 145, Sackets Harbor. Children's farm animal village with Wizard of Oz hayride, mini-golf, pick pumpkins, visit animals, 315-583-5737; OldMcDonaldHasAFarm.com

RAQUETTE LAKE NAVIGATION COMPANY, Raquette Lake, boat tours, cruise and dine, scenic excursions, moonlight cruises, fall foliage, camps of J.P. Morgan, Vanderbilt and Huntington, private charters. 315-354-5532 or raquettelakenavigation.com

SANTA'S WORKSHOP, Off Route 83, Wilmington. Alpine village with Santa Claus, helpers, live reindeer, animal park, storybook characters, children's rides, crafts, musical shows, (518) 946-2211 or northpoleny.com

SIX FLAGS GREAT ESCAPE AND SPLASHWATER KINGDOM, Route 9, Lake George. Over 135 rides, shows, and attractions. 518-792-3500 or sixflags.com/greatEscape/index.aspx

GRASSE RIVER ADVENTURES, Professionally guided trips. Hunt - Fish - Hike - Paddle. Call David Burnham, Certified Guide at 315-854-0422 GrassRiverAdventures.com

SCI-TECH CENTER OF NORTHERN NEW YORK, 154 Stone St., Watertown. Hands-on science center, more than 40 interactive exhibits, specialty art classes and programs, school tours, birthday parties. 315-788-1340 or scitechcenter.org

SINGER CASTLE ON DARK ISLAND Chippewa Bay on the St. Lawrence Seaway. Frederick G. Bourne of New York City (a contemporary of George Boldt) had this castle built as a hunting retreat for his family. Italian stonecutters cut granite to shape this 3-story, 28-room castle with a 5-story clock tower and elaborate boathouse.

Boat tours are offered from Chippewa Bay by Schermerhorn Harbor Shuttle, 315-324-5966 and from Alexandria Bay by Uncle Sam Boat Tours, 877-253-9229. Charter group tours can also be arranged. Info: 1-877-327-5475, or singercastle.com

STONE MILLS AGRICULTURAL MUSEUM, 30950 Route 180, LaFargeville. Museum telling the development of the agricultural industry in Northern, NY, historical materials relating to farm and farmhouse in Jefferson, St. Lawrence, Lewis & Oswego Counties. 315-658-2353 or stonemillsmuseum.org

THOUSAND ISLANDS ARTS CENTER, 314 John St., Clayton, formerly the Handweaving Museum & Art Center, preservation and promotion of traditional arts and handcrafts, Handweaving Museum, gallery exhibits, craft shows, gift shop, pottery classes, events. 315-686-4123 or iartscenter.org

THOUSAND ISLANDS LAND TRUST (TILT), 135 John St., Clayton, non-profit organization working to conserve the natural beauty, diverse wildlife habitats, water quality and outdoor recreation opportunities of the 1000 Islands region over 8,200 acres of land, over 30 miles of trails that are open to the public, year round. 315-686-5345, info@TILandTrust.org, www.TILandTrust.org

UNCLE SAM BOAT TOURS, 45 James St., Alexandria Bay. Tours of the St. Lawrence Seaway and Thousand Islands. For departure times: 315-482-2611, sboatours.com

UPPER CANADA VILLAGE Authentic buildings comprise this village from the 1860's. Period costuming and activities capture the seasons and cycles of rural village life. 13740 County Rd 2, Morrisburg, Ontario, Canada. 613-543-4328 or uppercanadavillage.com Very cool! Great for kids!

WATER SLIDE WORLD, exit 21 off I-87, 2136 Rte. 9, Lake George. Wave pool, 35 water slides, volleyball. 518-668-4407, waterslideworld.net

WHITE PINE CAMP TOUR, White Pine Road, Paul Smiths, guided walking tour of historic Adirondack Great Camp, served as summer White House in 1926 for Pres. Calvin Coolidge, public tours Wednesdays late June through Sept. and Saturdays late June through early Sept. Info, reservations: 518-327-3030 or whitepinecamp.com

WHITEFACE MOUNTAIN MEMORIAL HIGHWAY, Wilmington, whiteface.com/activities/whiteface-veterans-memorial-highway, panoramic views of the Adk High Peaks, along a five-mile toll road, elevator to top, historic toll house, castle and tunnel. 518-946-2223.

THE WILD CENTER, A 31-acre campus in Tupper Lake featuring live exhibits, hiking and naturalist guides. Theaters with films, hands-on nature, hundreds of live animals from rare native trout, to river otters, to turtles Info: 518-359-7800 or wildcenter.org



Dining & Things to do Close By

Please call ahead in case of COVID business disruptions.
(Check www.northcountryguide.com for listings of all local restaurants, diners and fast food options)

Your Host's Selected Favorites:

1844 House

On Route 11 about half way between Potsdam and Canton, this American Bistro has, in my opinion, the best food in the area. Full disclosure, the owners are good friends of mine but I still think it's the best! Reservations recommended. Price - upper range for the area.

Jakes on the Water

Take Rt 56 south past SUNY Potsdam and Jakes is just outside the hamlet of Hannawa Falls. Always a great dining and bar choice! Beautiful setting, good service, adventurous chef. Food is good. Price mid-upper range for our area.

Maxfield's

Located in downtown Potsdam on Market St. near the bridge to Fall Island, this is a multi-purpose establishment. In addition to having good food the bar caters to an older crowd during the day and a student crowd at night.

Cactus Grill

The Grill is located on Raymond St. just off Market St. Raymond is across the intersection from Elm St. by the University Bookstore. It's consistent, Mexican fare.

Mc Duff's

Market street in Potsdam. Bar & great bar food.

Rainy day things to do close by:

Tour the Adirondack Fragrance Farm Factory and Outlet Store on Rt 72 Parishville.

www.adkfragrancefarm.com Owned by your host Sandy Maine.

Call Helen Condon 315 265 4722 and ask to visit her rug braiding studio. It's amazing! www.adirondackrugbraiding.com

Don't miss The Birchbark Book Shop at 40 Ashton Road, in Potsdam, Open 1-6 PM on Saturday and Sunday. Over 80,000 used books, local history, vintage records and magazines. Great Kids section too! You can find them on Facebook.

Parishville Museum, 1785 Main Street, in Parishville. A rich collection of the towns industry and logging history and more! (315) 265-6180
Call Town Clerk for Museum Hours. They vary by season.

Sergi's

Great Italian food and pizzeria. Family run. Market Street Potsdam Mahogany Ridge Bar & Grill Locally owned by Chef Kirk Rabideau. Excellent local cuisine. Fun bar, romantic atmosphere, great service, reasonably priced. About a 30 minute drive from here. South Colton 315-274-0351

Thai Cuisine Restaurant

Located on the other side of Fall Island from Maxfield's. I like the food and appreciate that it's prepared well and fresh.

Mama Lucia's

This restaurant is located in the old train depot that is visible from the bypass (Sandstone Drive) and is at the end of Depot St.. Depot St. is off Market St. by Subway and McDuff's. Very good Italian!

Royal India Grill

Home Made Authentic Cuisine. Food is excellent. Service and prices are good. 8 Market St, Potsdam

The Timber Tavern

A locally owned bar and restaurant open 7 days a week. It's on Rt 72 just past Parishville. The food is pretty good and very reasonably priced. A local favorite if you don't want to drive all the way to Potsdam!

The Cedar Lodge

A very backwoods local bar/restaurant that caters to locals and snowmobilers. It's small and cozy! The people are friendly, the food is good, portions are huge and you can't beat the prices!

Mahogany Ridge in South Colton

Owner is chef and his wife is hostess. Friendly bar and homemade meals are above average and reasonably priced too!



Enjoy a visit to our Finnish wood-fired cedar sauna.

It's located between the Farm House and The Rock House in a small green building. Fresh towels, firewood and fire starter are provided. It takes approx 90 minutes to get the sauna up to temperature.

If you have heart disease or other underlying health issues please read health cautions information posted in the sauna dressing room.

Rock



House

St. Lawrence County Museums & Galleries

NORTH COUNTRY CHILDREN'S MUSEUM

A cultural and educational center for North Country families committed to hands-on, minds-on learning. NCCM is located at 10 Raymond Street in Potsdam, NY. The museum's permanent exhibits celebrate the cultural and geographic resources of the North Country and provide opportunities for children and their families to play and learn together. Changing programs and activities daily.
Open Wed-Sun 10am-5pm. 315-274-9380. northcountrychildrensmuseum.org.

FREDERIC REMINGTON ART MUSEUM

Dedicated to collecting, exhibiting, preserving and interpreting the art and archives of Frederic Remington. 303 Washington St., Ogdensburg.
Hours: Oct. 16 through May 14, Wednesday through Saturday 11 a.m. to 5 p.m., Sunday 1 to 5 p.m.; May 15 through Oct. 15, Monday through Saturday 10 a.m. to 5 p.m., Sunday 1 to 5 p.m.; info: 315-393-2425, www.fredericremington.org

ST. LAWRENCE COUNTY HISTORICAL ASSOCIATION

Silas Wright House/Museum, 3 E. Main St., Canton; permanent and rotating exhibits; museum and its archives are open Tuesday-Thursday, from noon-4 p.m., Friday, noon-6 p.m., and Saturday, 10 a.m.-4 p.m. Museum admission is free; archives admission \$5, \$2.50 for students.
Info: 315-386-8133, slcha.org

ST. LAWRENCE POWER & EQUIPMENT MUSEUM

1755 State Highway 345, Madrid. Preserving the history of how people in the North Country lived and how new technologies helped shape their lives.
Regular exhibits open 2nd and 4th Saturdays, 10 am to 2 pm, June through October or by appointment. Groups welcome. www.slpowermuseum.com.

HAWKINS POINT VISITORS CENTER

Free, 21 Hawkins Point Road, Massena; operated by New York Power Authority, state-of-the-art exhibits and panoramic views of St. Lawrence River and NYPA's St. Lawrence-FDR Power Project, interactive displays and hands-on learning about energy, electricity and the North Country, Barnhart Island, Massena.
Open 7 days a week from 9 a.m. to 5 p.m. from Memorial Day through Columbus Day. Open 5 days a week (Monday - Friday) from 9 a.m. to 5 p.m., the rest of the year. Info: 315-764-0226, Ext 7166302 or 800-262-NYPA; <http://www.nypa.gov/communities/visitors-centers/hawkins-point>

NICANDRI NATURE CENTER

19 Robinson Bay Rd., Massena, in Robert Moses State Park, 315-705-5022, massenanaturecenter.com. Exhibits and programs designed to promote public awareness, appreciation and respect for the environment through exploration, education, and outdoor recreation.

POTSDAM PUBLIC MUSEUM

Civic Center, 2 Park Street. Info: 315-265-6910, potsdampublic-museum.org, permanent and featured exhibits on local history and decorative arts.
Open 10 a.m.-4 p.m. Tues.-Sat. Adm. free.

THE TAUNY CENTER

(Traditional Arts in Upstate New York), a non-profit membership organization dedicated to documenting and presenting traditional culture and folk life of Northern New York, permanent and changing exhibits, workshops and demonstrations.
53 Main St., Canton, 315-386-4289, TAUNY.org.

RICHARD F. BRUSH GALLERY

St. Lawrence University, Canton. Info: 315-229-5174. Programs of rotating exhibitions during the academic year, representing regional, national and international artists in a variety of media. Also oversees the university's permanent collection -- strengths in 20th century American photography, prints, portfolios and artists' books. Individuals and school groups are welcome for guided tours of exhibitions, during academic year open Monday-Thursday noon to 8 p.m., Friday and Saturday noon to 5 p.m., free admission, stlawu.edu/gallery.

ROLAND GIBSON GALLERY, SUNY POTSDAM

Art museum with collection and exhibitions of 20th century and contemporary art. 315-267-3290, 315-267-2245, Tues-Thurs 1-7pm, Fri & Sat. 1-5pm; closed Monday & Sunday; closed during school recesses and between exhibits. potsdam.edu/museum.

ST. LAWRENCE COUNTY ART GALLERY

Potsdam Town Hall, 18 Elm St.; exhibits of current local art, rotating every four to six weeks.
Free; info: 315-265-6860, slcartscouncil.org.

CELINE G. PHILIBERT MEMORIAL CULTURE CENTRE & MUSEUM

200 E. Orvis St., Massena, 315-769-8571, massena.us/178/Museum, exhibits include general store, doctor's office, early street lights, musical instruments and others.
Open Monday through Friday, 10 a.m.-4 p.m.

AKWESASNE LIBRARY AND CULTURAL CENTER,

321 Rt. 37, Hogansburg, on the St. Regis Indian Reservation. Historical & contemporary Mohawk artifacts, utilitarian & fancy ash splint & sweetgrass baskets, traditional crafts.
Info: 518-358-2461 akwesasneculturalcenter.org/museum.

GOUVERNEUR MUSEUM

30 Church St., 315-287-0570, gouverneurmuseum@centralny.twcbc.com; gouverneurmuseum.org.
Open year-round, Wednesdays and Saturdays from 1 to 3 p.m., free admission. Museum houses artifacts scrapbooks, and mineral specimens from the Gouverneur area.

Rock



House

St. Lawrence County Museums & Galleries

SUSAN C. LYMAN HISTORICAL MUSEUM

39 Main St., Norwood, Victorian era rooms, railroad, firefighting & school memorabilia. Open Tuesdays and Thursdays in May through September from 2 to 4 p.m. Info: 315-353-2372 or norwoodny.org/museum.htm.

OGDENSBURG PUBLIC LIBRARY

312 Washington St., 315-393-4325; historical and genealogical materials relating to Ogdensburg, including Hasbrouck correspondence collection, Gen. N. M. Curtis Civil War papers; list of manuscripts available at ogdensburgpubliclibrary.org/node/46.

CANTON TOWN & VILLAGE COLLECTION

Second floor of the Canton Municipal Building, Main St., a mini-museum with town/village archives, photographs, maps/artifacts. Contact Linda Casserly, town & village historian, 315-386-1633, call ahead for special appointments and tours, antonnewyork.us/history.

NORFOLK HISTORICAL MUSEUM

42 1/2 West Main St., Open Tues. & Thurs.
Noon to 5 p.m., 315-384-4575, norfolknymuseum.com.

OLD MEETING HOUSE MUSEUM

696 E. DeKalb Rd., DeKalb
Junction, dekalbnyhistorian.org Wednesdays 11 a.m. - 3 p.m., Thursdays 4 to 7 p.m. during winter, and by appointment. Info: DeKalb Historical Association, 315-347-1900.

HOPKINTON TOWN MUSEUM

7 Church St., Hopkinton,
Info: 315-328-4187
townofhopkinton.com/hopkinton-historical-group-andmuseum.html
Information on the Adirondacks on display.

WALKER HOUSE MUSEUM

191 County Route 31, Madrid, operated by Madrid Historical Society. Open the second and fourth Saturdays of the month from June through October from 10 a.m. to 2 p.m. Info: 315-322-0605 or 315-322-4203, madridhistoricalsociety.com.

COLTON TOWN MUSEUM

Main St., across from the town hall, coltonmuseum.org/more

PARISHVILLE MUSEUM

E. Main Street. July and Aug. Wed 1 - 3 p.m., 6 - 8 p.m.; 315-265-4232. Thirteen rooms in 19th century style.
parishvilleny.us/museum.html.

MORRISTOWN GATEWAY MUSEUM

309 Main St.,
315-375-4910; morristowngatewaymuseum.org/about.html.

HAMMOND MUSEUM

Main Street (NYS Hwy. 37), Hammond, 2-4 p.m. Wednesdays and 10 a.m.-4 p.m. Saturdays mid-May through September, 315-324-5517
blacklakeny.com/hammondmuseum.

OGDENSBURG DIOCESE ARCHIVES

622 Washington St., Ogdensburg; 315-393-2920,
dioogdensburg.org

PIERREPONT MUSEUM

Next to town hall, old school house, open 10 a.m. to 1 p.m. Saturdays May 30 - Sept. 30 or by appointment. Historian: 315-379-0804 or barbra2030@twc.com
townofpierrepont.com/historyhistorian.html

LADIES FIRST GALLERY

208 Front St., Rensselaer Falls, Sally White Hartman,
315-344-8882.

OSWEGATCHIE RIVER HOUSE MUSEUM

Rensselaer Falls. 315-344-8882.

CLARKSON UNIVERSITY CHEEL CAMPUS CENTER LOBBY

Potsdam, features periodic art displays.

MOORE MUSEUM

3 Main St., Waddington, 315-388-5967; May to midSeptember, Tues. - Thurs. 1-4 p.m. or by appointment. 400 family histories and about 50 house histories available for research, in conjunction with Waddington Historical Society; also memorabilia from Waddington history and diorama that shows what happened to land during construction of St. Lawrence Seaway/Power Project.

Historian may be e-mailed at wadhist@northnet.org from 1 to 3 p.m., free admission.

Museum houses artifacts scrapbooks, and mineral specimens from the Gouverneur area.



Regional Museums & Galleries

THE WILD CENTER

45 Museum Dr., Tupper Lake. "Stunning," says NY Times. The Center, including the brand new Wild Walk, its elevated trail across the treetops, is an all-day attraction. It includes 81-acres of outdoors, a 54,000-square-foot museum with movies and live animals, guided canoe paddles and hands-on everything. For all ages. Hours: Memorial Day to Labor Day, 10 a.m. to 6 p.m., 7 days a week; Labor Day to Columbus Day, 10 a.m. to 5 p.m. Closed April, Thanksgiving Day, Christmas Day and New Year's Day.

Info: 518-359-7800, www.wildcenter.org

LAKE PLACID CENTER FOR THE ARTS

17 Algonquin Dr., Lake Placid, hours may vary, free admission;

Info: 518-523-2512 or lakeplacidarts.org

THOUSAND ISLANDS ARTS CENTER

314 John St., Clayton, formerly the Handweaving Museum & Art Center, preservation and promotion of traditional arts and handcrafts, Handweaving Museum, gallery exhibits, craft shows, gift shop, pottery classes, events, tiartscenter.org, 315-686-4123.

Open Monday- Friday 9 a.m.-5 p.m, Saturday 10 a.m.-4 p.m., Sunday 11 a.m.-3 p.m.

ADIRONDACK LAKES CENTER FOR THE ARTS

Blue Mountain Lake, adirondackarts.org, Concerts, theatre, art exhibits, workshops and classes for children and adults.

Info: 518-352-7715.

WINTER OLYMPIC MUSEUM

2634 Main St., at the Olympic Center in Lake Placid, exhibits, displays, memorabilia of the Winter Olympic Games.

Open daily, 10 a.m.-5 p.m. Admission: \$7, \$5 juniors and seniors.

Info: 518-302-5326 or

whiteface.com/activities/lake-placid-olympic-museum.

ADIRONDACK MUSEUM

Six million acres of Adirondack Park surround the museum and form the basis of the museum's exhibits and programs telling the stories of how people have lived, worked, played and traveled in the Adirondack region since the early 1800s. Twenty buildings on 32 acres of grounds and gardens, house exhibits on logging, boats and boating, mining, outdoor recreation, transportation, rustic furniture, and on-going programs and special events. 9097 State Route 30, Blue Mountain Lake 518-352-7311, adkmuseum.org, 10 a.m.-5 p.m. daily late May through mid October.

May be closed in 2020 due to Covid.

JEFFERSON COUNTY HISTORICAL SOCIETY

228 Washington St., Watertown. Hours: Closed Sun & Mon. Tues-Fri.

9 a.m. to 4:30 p.m. Saturday 9 a.m.-4 p.m.

Archives by appointment.

Info: 315-782-3491, jeffersoncountyhistory.org.

ADIRONDACK ARTISTS GUILD GALLERY

52 Main St., Saranac Lake, 518-891-2615, adirondackartistsguild.com, Hours: Mon. - Sat. 10 a.m. to 5p.m., Thurs until 7 p.m., Sun. 11

a.m. to 3 p.m.

WILDER HOMESTEAD

177 Stacy Road, Burke, www.almanzowilderfarm.com. 518-483-1207.

Childhood home of Almanzo Wilder, whose memories of growing up in NNY were written as "Farmer Boy" by his wife Laura Ingalls Wilder. Open daily May through October and for one weekend in early December. Guided tours of the period decorated home, historically recreated barns, 1860s-era one-room school house, museum and gift shop. Special events throughout the season with Civil War re-enactors, a Harvest Festival, music, food vendors, children's games, and demonstrations.

Open 10 a.m.-4 p.m. Monday through Saturday and noon-4 p.m. on Sunday.



Antique Stores (within a one-hour drive)

Canton

THE GLASS BUBBLE

Old and new collectibles, Depression glass, jewelry (over 4000 pieces), Bisque dolls, Graniteware, some, some small furniture, ironstone, coins, some paper money, comic books, Nippon, some military memorabilia, cookie jars, cups and saucers.

Open 8 a.m. to 9 p.m., Monday through Sunday, year-round.

Terry Faucher, Proprietor, 1278 Old DeKalb Rd., 315-386-3228.

GRASSE RIVER ANTIQUES

Buy and sell glass and china. Depression glass.

Open by chance or appointment; 315-322-5706; wishlist@twc.com; Marion McIntosh, Prop., 2905 County Rte. 14, between Madrid and Morley, watch for sign.

K & M ANTIQUES & COLLECTIBLES

167 Hale Rd., 315-386-2756, Karen Averill and Mavis Bush, proprietors; costumjewel@gmail.com; large collection of vintage costume jewelry. Featuring antique pins and coins; wide selection of collectibles.

CLASSY COLLECTIBLES

5933 US-11, Plaza, Canton; 315-714-2395.

TOAD HOLLOW TREASURES

233 Chapel Hill Road, Colton. Tom & Debbie Taillon, 315-265-7287 or 315-261-0784. Open by appointment, by chance, or at Classy Collectibles, Canton, or Massena Market Place. Buys and sells general lines of antiques & collectibles.

Dekalb Junction

OLD GENERAL STORE

4352 U.S. Hwy. 11, 315-347-1340; multi-dealer shop featuring a large variety of antiques and collectibles ranging from glassware to furniture and primitives. Buying individual items or estates. Owner, Paul Hitchman, www.facebook.com/The-Old-General-Store-Antique-Shop-DeKalb-Jct-NY-209574209783753

TREASURED ANTIQUES

3 School St. and Route 11, 315-347-1604, [hiddentreasures](http://hiddentreasures.com), rare finds and trendsetters of antiques and collectibles, <https://treasuredantiques.wordpress.com/>, www.facebook.com/TreasuredAntiques.

Gouverneur

ANTIQUES AND COLLECTIBLES

887 U. S. Hwy. 11, Gouverneur, Melodie Kirby, 315-287-4543 or 315-528-5195. Coca-Cola items, Star Wars, sheet music, records, games, GI Joe items, tin toys, pedal cars and tractors, robots, metal lunch boxes, books and more.

Open by appt. only or www.storesonline.com/site/antiquescollectibles.

Gouverneur can't

KOBWEB KORNER

1050 US Highway 11, 315-287-4984, Ron

Burt, burt_song@yahoo.com, proprietor; antique & collectible flea market. Multi-vendors. A little bit of everything from toys to furniture.

Located at TheRed Barn House. May through Oct. daily 11 a.m.

to 6 p.m.; Nov. through April by chance or appointment.

Hammond

LAKESIDE TREASURES & MARINA

3675 County Route 6, 315-375-4436, constantly changing inventory, 2,500 square feet of antiques and collectibles,

primitives, furniture, fishing tackle, glass, tools, gifts, closed Wednesdays.

<https://www.facebook.com/Lakeside-Treasures-117583244928206/>

Helena

LANTRY'S ANTIQUES

Sharon Lantry, Depot St., Helena, 315-769-5641.

General line of early country furniture, china, paintings, prints, primitives. Open year round by chance or appointment.

Heuvelton

BREAKABLE COLLECTIBLES

Erwin & Becky Selleck, 61 Rensselaer St., 315-344-2480. Decorative

smalls including glassware, time pieces, ephemera and costume jewelry.

Upstairs in the "yellow bedroom" at The General Store in DeKalb Junction. Also open at home by appointment or chance.

Email ecbs45@verizon.net.

FLO'S TRINKETS

Tom & Flo Woodward, 714 East Rd., 315-344-8820 or 315-344-8893, large collection of old costume jewelry, glass & pottery, old & new collectibles. Open Saturdays or by appointment. Take Rt. 812 of Heuvelton toward Rt. 11. Take first right onto East Rd., 2 miles up on the left.

Lawrenceville

ANY OLDE THING

Laura Murphy, 11484 US Hwy 11, 315-389-4900 or 315-328-5911. Booths located at The Paperback Browser. Kitchen collectibles, pottery and glass, books, old tools, bottles, music items, furniture, ephemera and country collectibles.

Open Fri. & Sat. from Jan. to mid-May, 10 a.m.-4 p.m.; Thurs.-Sat.

mid-May to Dec., 10 a.m.-4 p.m. Call to be sure of hours. Email lauraj.murphy@yahoo.com.

DUE NORTH BY DESIGN

315-769-7828, duenorth@twcny.rr.com, booth in paperback browser and peddlers closet, vintage furniture and home decor, specializing in painted furniture.



Antique Stores (within a one-hour drive)

Lawrenceville

THE PEDDLER'S CLOSET AND PAPERBACK BROWSER

Route 11, North Lawrence, 315-389-4900, <https://www.facebook.com/The-Peddlers-Closet-at-Paperback-Browser-139524>.
Open Thursday, Friday and Saturday, 10 a.m.-4 p.m. Various antique and home decor dealers with booths.

Madrid

EMPORIUM ANTIQUES AND NEWTIQUES

4690 County Route 14, Madrid, between Madrid and Chase Mill, 315-276-8875. Open by appointment or by chance or at Classy Collectibles in Canton. Features antiques and collectibles, over 1,000 items.

Massena

FABULOUS FINDS BOUTIQUE & CONSIGNMENT

Cynthia Aracadi, 535 South Main St., 315-514-1334. Antiques, collectibles, coins, jewelry, clothing. Red building past the railroad track on the left. Open Tues.-Sat., 9 a.m.-6 p.m. Consignment Tues.-Thurs. Email - fab.findsboutique@hotmail.com. <https://www.facebook.com/FabulousFindsNY>.

MASSENA MARKETPLACE

John Gardner, 528 South Main St., 315-705-4258. Homecrafted furniture, toys, dolls, lamps, china and glass, jewelry and coins, books and paper, new and old primitives. Oct.-May, closed Tues.; May-Oct. open 7 days per week - Sun.-Wed., 10 a.m.-5 p.m., Thurs & Fri., 10 a.m.-6 p.m., Sat. 9 a.m.-6 p.m. <https://www.facebook.com/MassenaMarketplace/>.

MOLLY'S ANTIQUES & COLLECTIBLES

315-769-3196 or sblais1@twcny.rr.com. Variety of items including primitives, tools, furniture, new and old collectibles, flea market treasures. Massena Market Place, S. Main Street & Classy Collectibles, Canton. Buy, sell or trade. Steven Blais, proprietor.

NORTH RACQUETTE ANTIQUES

928 North Racquette River Road; Carol Hartle, proprietor; 315-769-5697; specializing in furniture, glass, china, lamps, picture frames and a general line of fine antiques; open Friday through Sunday 10 a.m. to 4 p.m., Monday through Thursday; by chance or appointment year round, heated shop. Look for green sign.

Morristown

MARE'S WARES

Varied line of traditional antiques, artist-made pottery, and unique one-of-a-kind gifts; scenic Route 37 just outside Morristown, in the same building as the famous "Evan's House - Home of The Muskie," mixture of the traditional, contemporary, and outrageous; by chance or appointment at 315-375-8214, or mareswares@hotmail.com <https://www.facebook.com/Mares-Wares-Arts-Fest-127924893899044/>

Norfolk

NORTH COUNTRY PINS AND PAPER

Jason Clark, 617-312-8594, Norfolk. Buying and specializing in vintage pin backs, advertising, ephemera and smalls. Especially interested in railroad, tobacco, gambling, sewing, Americana, gasoline, political, olympic, labor, World's Fair, space, maps, bottle openers, military medals, paper dolls and academia items that fit within the previously mentioned categories. Also interested in German steins, Steiff animals, hand crafted baskets and items handcrafted by our Native American Indian neighbors. www.biblio.com/bookstore/northcountry-pins-and-paper-norfolk.

Norwood

ASHLEY HOUSE

1 Park St., 315-353-4609, multi-dealer shop offering a wide variety of quality furniture, antiques, collectibles, and new gifts, set in a stately brick home; always buying quality pieces and estates. <https://www.facebook.com/ashleyhousehomedecor>

STICKNEY'S ANTIQUES

Carlton Stickney, 315-384-4764. Glassware, pottery, porcelains, lamps and small furniture. Booth at Massena Marketplace and Market Barn, St. Hwy. 11 in Malone. Glassware at Pear Tree in Canton.

WILLOW CREEK CHAIRS

Renee Baxter, 1137 Old Market Rd., 353-2543. Antiques, refinishing, upholstery, caning and rush work. Located in Knapps Station. Mon.-Sat. 10 a.m. to 5 p.m. Ogdensburg

O'DONOGHUE'S COUNTRY ANTIQUES

Robert O'Donoghue, Arnold Rd., 315-393-1505. Country furniture, quilts, baskets, decoys, decorative accessories. Open by chance. Also at The Old General Store in DeKalb Junction. Email rslr@verizon.net.

Potsdam

ARGENT'S JEWELRY & COIN SHOP

32 Market Street, 315-265-6389. <https://www.facebook.com/argentsjewelry>
Antiques, estate jewelry, collectibles

JOE BERNER ANTIQUES

315-265-3184, www.jbagold.com/. Antiques and collectibles wanted, one piece or entire estates.

BEST FRIENDS THRIFT SHOP

8 Raymond St., Potsdam, 315-262-4959. <https://www.facebook.com/Best-Friends-Thrift-Shop-Potsdam-NY-168744249805215/>
Antiques and collectibles, along with thrift store style items.

Rock



House

Antique Stores (within a one-hour drive)

Potsdam

BIRCHBARK BOOKSHOP

75,000 books, also rustic and modern furniture built by owner and Fred Peryer; open year-round.

Hours: 1-6 p.m. Saturday & Sunday.

Directions: South on Route 56 past Potsdam College to Route 72 on left, after 4.5 miles, just past sign for Parishville Center, turn right onto Ashton Road, bear left at Y in road, third house on left.

Also at Evans and White Ace Hardware,
Maple St., Potsdam.

<https://birchbarkbookshop.wordpress.com/>

NORTH COUNTRY NEIGHBORS

6 Main St., downstairs, Potsdam, 315-268-1055; 5,500 sq. ft. flea market featuring over 50 vendor booths; used, vintage and antique items including books, toys, home accents and smalls of every kind. Cathy Connolly, owner. <https://www.facebook.com/North-Country-Neighbors-109316925766200>

WHO KNOWS WHAT

"Potsdam's new quaint emporium," 2 Elm St.,
315-250-3951; www.facebook.com/argentsjewelry/
Call for hours.

TREASURES COVE, THRIFT & GIFT STORE

22 Market St., Potsdam;
t.c.treasures.cove@gmail.com or 315-261-4113;
<https://www.facebook.com/Biz4Us/>; Laura and Jay Taylor, proprietors;
vintage vinyl, clothing, thrift items, some antiques.

Raymondville

ICE HOUSE ANTIQUES

8705 NYS Hwy. 56, Raymondville; Darian and Stacy Maslin, proprietors. Open by chance or by appointment. Carrying a varied line of primitives, antiques, collectibles, glassware, pottery, tools, furniture, lighting, toys, jewelry, kitchen collectibles, ephemera, vintage linens and clothing. Adding new inventory daily.

315-384-6043; sdmaslin@yahoo.com,

<https://www.facebook.com/Ice-House-Antiques-344054709055857>

Rensselaer Falls

RIVER HOUSE WARES & RESTORATION

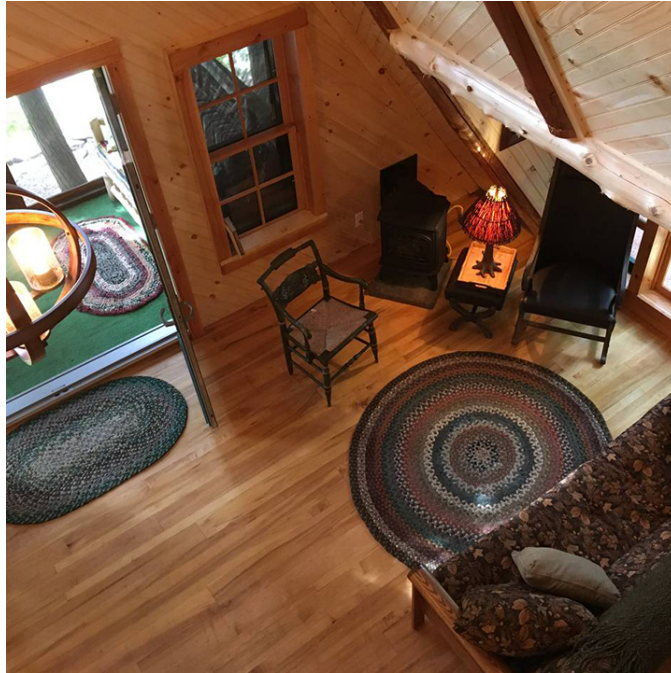
Over 2,500 period doors (12"-54" wide) and windows (small pane) in stock. Thousands of architectural restoration materials, vintage hardware, trim moldings, spindles, shutters, porch posts, railings, unique light fixtures, cast iron floor registers, claw foot bathtubs, pedestal sinks, toilets, urinals, fireplace fronts and more. 1950's vintage bowling alleys for counters and islands and oak and cherry stairway rails. Open by chance or appointment. Call David at 315-262-7986
Featured on an episode of The Pickers in 2018!

VINTAGE PAPER

A collection of original advertisements about automobiles, soda pop, toys, trains and large collection of local historical photographs.
Open by chance or appointment. Call David at 315-262-7986



Airbnb & Adirondack by OwnerRental Properties
at 1150 Sylvan Falls Road
Hosted by Sandy & Lou Maine



ADK Riverside Cabin A Frame
Right on the water!



ADK River Overlook Cabin - Overlooking
the river. Spectacular views & soundscape.



The Rock House - Up in the trees! Private tub
and firepit!

