



Out and About

Hiking

There are lots of good hiking trails in St. Lawrence County. Some of the best are:

Stone Valley

Trail goes along both sides of the Raquette River from Colton north to the Brown's Bridge road and back, making it possible to do a 7.5-mile loop if desired. Trailheads in Colton are on each side of the bridge over the river just above the Colton Dam and parking is available at both places. Dramatic views and overlooks of many waterfalls and rapids and some informational plaques. (<http://northcountrynow.com/hiking>)

Lampson Falls

There is a short .8 mile round trip hike in to this tremendous waterfall on the Grasse River, with excellent viewing opportunities. Take County Route 27 south out of Canton, heading towards Degrasse. After crossing the Pierrepont-Russell Road, it is 5.8 miles more. Watch for a large brown DEC sign on the right (west side) for the Grasse River Wild Forest. Park on the roadside and walk down the gated road. About .3 miles in there will be a wide path to the left – this leads to the top of the falls. From there you can follow a trail that runs alongside the river down to the base of the falls, or return to where you turned off and continue on that trail, bearing to the left. When you reach the large pool at the base of the falls, you can find trails that continue left onto the rock ledges directly across from the falls, providing outstanding views. If you watch for trail markers, you can continue walking a bit further downstream along the river. There used to be a wooden bridge across the river and more trails, but the bridge was washed out a number of years ago. Once you reach the site of the old bridge, you can take an old logging road back to the where you parked your car. (<http://northcountrynow.com/hiking>)

Red Sandstone Trail in Potsdam

History and scenery combine in this 3.5-mile trail along west bank of Raquette River between Hannawa Falls and Potsdam. Interpretive markers display a map. See where some of the famous "Potsdam Sandstone" came from. Park near the Hannawa Falls Fire Department on Mill St., just off State Hwy 56 in Hannawa Falls. Follow the blue diamond trail markers. Trail terminates at the northern tip of Sugar Island. Return to Mill St. or walk out the dirt roads to the Back Hannawa Road. (<http://northcountrynow.com/hiking>)

Southville State Forest – River Hill Trail

A mere 5 miles away, this is the closest hike to the cabin. Turn right out of the driveway and take the first left (Livingston Rd) and follow it to the end in West Stockholm. Turn left and go about 2.5 miles until you see the sign for the Southville Forest. The River Hill Trail is on the right side of the road. This trail is also good for cross-country skiing. It's about 2.3 miles total and can be done as a loop. Part of the trail drops down and follows alongside the river.

Robert Moses State Park Natural Trails

Off Route 37, Massena; approx. 6 miles of trails lead to overlook the St. Lawrence River; picnic & collecting areas; free cross-country ski, snowshoe rentals for use on Nature Center trails; info: 705-5022 or [www.massenanaturecenter.org \(http://northcountrynow.com/hiking\)](http://northcountrynow.com/hiking)

Indian Creek Nature Center

Excellent bird watching site, with 4.5-mile network of trails, located in Upper and Lower Lakes State Wildlife Management Area between Canton and Ogdensburg. Trail system includes observation tower and bird-blind overlooking the refuge, boardwalk trail accessible to people with disabilities, picnic pavilion, learning center and restroom facilities. Drive northwest on Route 68 from Canton about 4.9 miles and turn left onto route 14 (there is a sign to Rennselaer Falls). Proceed about 3.9 miles to a parking area turn off on the left and watch for signs. <http://www.indiancreeknaturecenter.us/> (<http://northcountrynow.com/hiking>)

Just outside St. Lawrence County:

The Pinnacle

Recently opened and marked half-mile hike up a small mountain just outside of Santa Clara perfect for beginning hikers and children. Open rocky cliff with views towards north and west. Take Route 11B east from Potsdam, turn south onto Route 458 in Nicholville. Continue past St. Regis Falls and about 1/4 mile after crossing bridge over St. Regis River in Santa Clara. Watch for a dirt road to the left with a large brown DEC sign. Turn left onto the road and follow signs for about two miles to parking area. Trailhead is directly across from the parking area. Due to regulations related to the Santa Clara Tract Easement, trail is closed to the public during big game season for deer. (<http://northcountrynow.com/hiking>)

Azure Mountain

The fire tower atop Azure Mountain has recently been restored by the Azure Mountain Friends, making this a popular two mile round trip hike. Elevation is only 2,518 feet, but this little mountain offers fantastic views of the High Peaks region to the south and east. A volunteer fire tower interpreter is often on duty on weekends to answer questions about the tower and can help identify distant mountains. Great hike for kids, but it is steep and caution should be used on the open cliffs on the summit. Take Route 11B east from Potsdam to Nicholville, then turn south onto Route 458. About four miles past St. Regis Falls, turn right onto Blue Mountain Road. Continue about 7 miles and watch for the small sign and trailhead parking area on the right. (<http://northcountrynow.com/hiking>)



Out and About

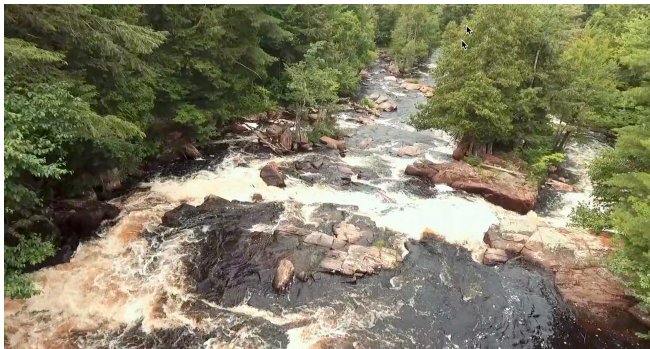
Canoeing and Kayaking

At one time the small rivers of the North Country were the focus of commerce. Today, the rivers are quiet; the surviving mills are no longer the center of activity. Few if any other areas can offer so many rivers with such easy and numerous access points. There are more than 200 rivers, ponds and lakes in St. Lawrence County and also part of the Adirondack Park, which boasts more than 3,000.

As the rivers finish their rush out of the mountains they begin but never fully settle down. Waterfalls and low water rapids are numerous along all the rivers and dams often block the way. Motorboats play in the longer sections of river but most rivers see light if any traffic.

You hardly need a guide to canoe or kayak in the area. Every stretch of river is worth exploring and usually has easy access.

Closest to home: You need to take only a few steps from the cabin door to access a nice 1 mile kayaking experience on the St. Regis River. Head down stream until you see the bridge. Don't go past the bridge unless you want to run some class III rapids!



Some other favorite options:

Lower Oswegatchie River

Starting near Gouverneur and flowing 65 miles to Ogdensburg, this section of the Oswegatchie is a gentle section. The river is wide and slow-moving here as it passes through rolling hills, rock ledges, marshes, and pasture land. There are scenic cliffs along the shore near Oxbow. There are carries at the dams and most of the rapids can be portaged or run by experience paddlers. There are various access points along the route to create varying trip lengths.

Grasse River: Canton to Madrid

Canoeing from the boat launch on Route 68 just outside the village of Canton to the dam in Madrid. This is a full-day trip of about 12 miles.

South Branch Grasse River

16 miles, 5 portages, access is off the Tooley Pond Road at various points.

Raquette River: Potsdam

The dam in Potsdam backs up the river nearly two miles and is a great place for a quick paddle or fishing. Access is in Ives Park, behind the Clarkson Inn, 1 Main Street, and there is a public parking area next to the Inn's parking.

Cranberry Lake

The Cranberry Lake region is one of the largest remote areas remaining in the State. The Lake covers 11 square miles and has 55 miles of shoreline, over 40 of which are State land. There are also 42 primitive campsites along the shoreline.

Kayaking and Canoeing section courtesy of the St. Lawrence County Chamber of Commerce. (<http://www.northcountryguide.com/pages/paddle>)

Winter sports

Winter sports, snowmobiling, ATV's ECT:

SLC Snowmobile Association- Trail Map www.slcsa.org

Other resources for XC skiing, snowshoeing and more
www.northcountryguide.com



Out and About

Dining

(check www.northcountryguide.com for listings of all local restaurants, diners and fast food options)

Your Hosts Selected Favorites:

1844 House

On Route 11 about half way between Potsdam and Canton, this American Bistro has, in my opinion, the best food in the area. Full disclosure, the owners are good friends of mine but I still think it's the best! Reservations recommended.

Jakes on the Water

Take Rt 56 south past SUNY Potsdam and Jakes is just outside the hamlet of Hannawa Falls. Always a great dining and bar choice! Beautiful setting, good service, adventurous chef. Food is good. Price mid-upper range for our area.

Maxfield's

Located in downtown Potsdam on Market St. near the bridge to Fall Island, this is a multi-purpose establishment. In addition to having good food the bar caters to an older crowd during the day and a student crowd at night. Service can be less than stellar at times but I can't say I've had a bad meal (although people I know have)

Cactus Grill

The Grill is located on Raymond St. just off Market St.. Raymond is across the intersection from Elm St. by the University Bookstore. It's consistent, if mediocre, Mexican fare.

Thai Cuisine Restaurant

Located on the other side of Fall Island from Maxfield's, this restaurant is run by a Thai woman and her family. Like most restaurants in Potsdam, servers and kitchen help are drawn from the local students so the service can be iffy. I like the food but even when I don't, I appreciate that it's prepared well and fresh.

Mama Lucia's

This restaurant is located in the old train depot that is visible from the bypass (Sandstone Drive) and is at the end of Depot St.. Depot St. is off Market St. by Subway and McDuff's.

The Timber Tavern

The Timber Tavern is a locally owned bar and restaurant and is open 7 days a week. It's on Rt 72 just past Parishville. The food is pretty good and very reasonably priced. A local favorite if you don't want to drive all the way to Potsdam!

The Cedar Lodge

A very backwoods local bar/restaurant that caters to locals and snowmobilers. It's small and cozy! The people are friendly, the food is good, portions are huge and you can't beat the prices!

Rainy day things to do close by:

Tour the Adirondack Fragrance Farm Factory and Outlet Store on rt 72 Parishville. www.adkfragrancefarm.com Owned by your host Sandy Maine.



Call Helen Condon 315 265 4722 and ask to visit her rug braiding studio. It's amazing! One of her rugs (the larger one) is on the cabin living room floor. www.adirondackrugbraiding.com

Don't miss The Birchbark Book Shop at 40 Ashton Road, Potsdam, NY!! Open 1-6 Pm on Saturday and Sunday. Over 80,000 used books, local history, vintage records and magazines. Great Kids section too! You can find them on Facebook.

Parishville Museum, 1785 Main Street, Parishville, NY 13672

A rich collection of the towns industry and logging history and more!

(315) 265-6180 Call Town Clerk for Museum Hours. They vary by season.



Out and About

St. Lawrence County Museums & Galleries

NORTH COUNTRY CHILDREN'S MUSEUM, a cultural and educational center for North Country families committed to hands-on, minds-on learning. NCCM is located at 10 Raymond Street in Potsdam, NY. The museum's permanent exhibits celebrate the cultural and geographic resources of the North Country and provide opportunities for children and their families to play and learn together. Changing programs and activities daily. Open Wed-Sun 10am-5pm. 315-274-9380. northcountrychildrensmuseum.org.

FREDERIC REMINGTON ART MUSEUM, dedicated to collecting, exhibiting, preserving and interpreting the art and archives of Frederic Remington. 303 Washington St., Ogdensburg. Hours: Oct. 16 through May 14, Wednesday through Saturday 11 a.m. to 5 p.m., Sunday 1 to 5 p.m.; May 15 through Oct. 15, Monday through Saturday 10 a.m. to 5 p.m., Sunday 1 to 5 p.m.; info: 315-393-2425, www.fredericremington.org

ST. LAWRENCE COUNTY HISTORICAL ASSOCIATION, Silas Wright House/ Museum, 3 E. Main St., Canton; permanent and rotating exhibits; museum and its archives are open Tuesday-Thursday, from noon-4 p.m., Friday, noon-6 p.m., and Saturday, 10 a.m.-4 p.m. Museum admission is free; archives admission \$5, \$2.50 for students. Info: 315-386-8133, slcha.org

ST. LAWRENCE POWER & EQUIPMENT MUSEUM, 1755 State Highway 345, Madrid. Preserving the history of how people in the North Country lived and how new technologies helped shape their lives. Regular exhibits open 2nd and 4th Saturdays, 10 am to 2 pm, June through October or by appointment. Groups welcome. www.slpowermuseum.com.

HAWKINS POINT VISITORS CENTER, free, 21 Hawkins Point Road, Massena; operated by New York Power Authority, state-of-the-art exhibits and panoramic views of St. Lawrence River and NYPA's St. Lawrence-FDR Power Project, interactive displays and hands-on learning about energy, electricity and the North Country, Barnhart Island, Massena. Open 7 days a week from 9 a.m. to 5 p.m. from Memorial Day through Columbus Day. Open 5 days a week (Monday - Friday) from 9 a.m. to 5 p.m., the rest of the year. Info: 315-764-0226, Ext 7166302 or 800-262-NYPA; <http://www.nyga.gov/communities/visitors-centers/hawkins-point>.

NICANDRI NATURE CENTER, 19 Robinson Bay Rd., Massena, in Robert Moses State Park, 315-705-5022, massenanaturecenter.com. Exhibits and programs designed to promote public awareness, appreciation and respect for the environment through exploration, education, and outdoor recreation.

POTSDAM PUBLIC MUSEUM, Civic Center, 2 Park Street. Info:

315-265-6910, potsdampublicmuseum.org, permanent and featured exhibits on local history and decorative arts. Open 10 a.m.-4 p.m. Tues.-Sat. Adm. free.

THE TAUNY CENTER, (Traditional Arts in Upstate New York), a non-profit membership organization dedicated to documenting and presenting traditional culture and folk life of Northern New York, permanent and changing exhibits, workshops and demonstrations. 53 Main St., Canton, 315-386-4289, TAUNY.org.

RICHARD F. BRUSH GALLERY, St. Lawrence University, Canton. Info:

315-229-5174. Programs of rotating exhibitions during the academic year, representing regional, national and international artists in a variety of media. Also oversees the university's permanent collection -- strengths in 20th century American photography, prints, portfolios and artists' books. Individuals and school groups are welcome for guided tours of exhibitions, during academic year open Monday-Thursday noon to 8 p.m., Friday and Saturday noon to 5 p.m., free admission, stlawu.edu/gallery.

ROLAND GIBSON GALLERY, SUNY Potsdam, Art museum with collection and exhibitions of 20th century and contemporary art. 315-267-3290, 315-267-2245, Tues-Thurs 1-7pm, Fri & Sat. 1-5pm; closed Monday & Sunday; closed during school recesses and between exhibits. potsdam.edu/museum.

ST. LAWRENCE COUNTY ART GALLERY, Potsdam Town Hall, 18 Elm St.; exhibits of current local art, rotating every four to six weeks. Free; info: 315-265-6860, slcartsCouncil.org.

CELINE G. PHILIBERT MEMORIAL CULTURE CENTRE & MUSEUM, 200 E. Orvis St., Massena, 315-769-8571, massena.us/178/Museum, exhibits include general store, doctor's office, early street lights, musical instruments and others; open Monday through Friday, 10 a.m.-4 p.m.

AKWESASNE LIBRARY AND CULTURAL CENTER, 321 Rt. 37, Hogansburg, on the St. Regis Indian Reservation. Historical & contemporary Mohawk artifacts, utilitarian & fancy ash splint & sweetgrass baskets, traditional crafts; info: 518-358-2461 akwesasneculturalcenter.org/museum.

GOVERNEUR MUSEUM, 30 Church St.,

315-287-0570, gouverneurmuseum@centralny.twcbc.com; gouverneurmuseum.org. Open year-round, Wednesdays and Saturdays from 1 to 3 p.m., free admission. Museum houses artifacts scrapbooks, and mineral specimens from the Gouverneur area.

SUSAN C. LYMAN HISTORICAL MUSEUM, 39 Main St., Norwood, Victorian-era rooms, railroad, firefighting & school memorabilia. Open Tuesdays and Thursdays in May through September from 2 to 4 p.m. Info: 315-353-2372 or norwoodny.org/museum.htm.

OGDENSBURG PUBLIC LIBRARY, 312 Washington St., 315-393-4325; historical and genealogical materials relating to Ogdensburg, including Hasbrouck correspondence collection, Gen. N. M. Curtis Civil War papers; list of manuscripts available at ogdensburgpubliclibrary.org/node/46.

CANTON TOWN & VILLAGE COLLECTION, second floor of the Canton Municipal Building, Main St., a mini-museum with town/village archives, photographs, maps/artifacts. Contact Linda Casserly, town & village historian, 315-386-1633, call ahead for special appointments and tours, antonnewyork.us/history.

NORFOLK HISTORICAL MUSEUM, 42 1/2 West Main St., Open Tues. & Thurs. Noon to 5 p.m., 315-384-4575, norfolknymuseum.com.

OLD MEETING HOUSE MUSEUM, 696 E. DeKalb Rd., DeKalb Junction, dekalbnyhistorian.org Wednesdays 11 a.m. - 3 p.m., Thursdays 4 to 7 p.m. during winter, and by appointment. Info: DeKalb Historical Association, 315-347-1900.

HOPKINTON TOWN MUSEUM, 7 Church St., Hopkinton, Info: 315-328-4187, townofhopkinton.com/hopkinton-historical-group-and-museum.html. Information on the Adirondacks on display.

WALKER HOUSE MUSEUM, 191 County Route 31, Madrid, operated by Madrid Historical Society. Open the second and fourth Saturdays of the month from June through October from 10 a.m. to 2 p.m. Info: 315-322-0605 or 315-322-4203, madridhistoricalsociety.com.

COLTON TOWN MUSEUM, Main St., across from the town hall, coltonmuseum.org/more/.

PARISHVILLE MUSEUM, E. Main Street. July and Aug. Wed 1 - 3 p.m., 6 - 8 p.m.; 315-265-4232. Thirteen rooms in 19th century style. parishvilleny.us/museum.html.

MORRISTOWN GATEWAY MUSEUM, 309 Main St., 315-375-4910; morristowngatewaymuseum.org/about.html.

HAMMOND MUSEUM, Main Street (NYS Hwy. 37), Hammond, 2-4 p.m. Wednesdays and 10 a.m.-4 p.m. Saturdays mid-May through September, 315-324-5517, blacklakeny.com/hammondmuseum.

OGDENSBURG DIOCESE ARCHIVES, 622 Washington St., Ogdensburg; 315-393-2920, dioogdensburg.org/.

PIERREPONT MUSEUM, next to town hall, old school house, open 10 a.m. to 1 p.m. Saturdays May 30 - Sept. 30 or by appointment. Historian: 315-379-0804 or barbra2030@twc.com, townofpierrepont.com/historyhistorian.html.

LADIES FIRST GALLERY, 208 Front St., Rensselaer Falls, Sally White Hartman, 315-344-8882.

OSWEGATCHIE RIVER HOUSE MUSEUM, Rensselaer Falls. 315-344-8882.

CLARKSON UNIVERSITY CHEEL CAMPUS CENTER LOBBY, Potsdam, features periodic art displays.

MOORE MUSEUM, 33 Main St., Waddington, 315-388-5967; May to mid September, Tues. - Thurs. 1-4 p.m. or by appointment. 400 family histories and about 50 house histories available for research, in conjunction with Waddington Historical Society; also memorabilia from Waddington history and diorama that shows what happened to land during construction of St. Lawrence Seaway/Power Project. Historian may be e-mailed at wadhists@northnet.org.





Out and About

Regional Museums & Galleries

THE WILD CENTER, 45 Museum Dr., Tupper Lake. "Stunning," says NYTimes. The Center, including the brand new Wild Walk, its elevated trail across the treetops, is an all-day attraction. It includes 81-acres of outdoors, a 54,000-square-foot museum with movies and live animals, guided canoe paddles and hands-on everything. For all ages. Hours: Memorial Day to Labor Day, 10 a.m. to 6 p.m., 7 days a week; Labor Day to Columbus Day, 10 a.m. to 5 p.m. Closed April, Thanksgiving Day, Christmas Day and New Year's Day. Info: 518-359-7800, www.wildcenter.org.

LAKE PLACID CENTER FOR THE ARTS, 17 Algonquin Dr., Lake Placid, hours may vary, free admission; Info: 518-523-2512 or lakeplacidarts.org.

THOUSAND ISLANDS ARTS CENTER, 314 John St., Clayton, formerly the Handweaving Museum & Art Center, preservation and promotion of traditional arts and handcrafts, Handweaving Museum, gallery exhibits, craft shows, gift shop, pottery classes, events, tiartscenter.org, 315-686-4123. Open Monday-Friday 9 a.m.-5 p.m., Saturday 10 a.m.-4 p.m., Sunday 11 a.m.-3 p.m.

ADIRONDACK LAKES CENTER FOR THE ARTS, Blue Mountain Lake, adirondackarts.org, Concerts, theatre, art exhibits, workshops and classes for children and adults. Info: 518-352-7715.

WINTER OLYMPIC MUSEUM, 2634 Main St., at the Olympic Center in Lake Placid, exhibits, displays, memorabilia of the Winter Olympic Games; open daily, 10 a.m.-5 p.m. Admission: \$7, \$5 juniors and seniors, 518-302-5326 or whiteface.com/activities/lake-placid-olympic-museum.

ADIRONDACK MUSEUM, Six million acres of Adirondack Park surround the museum and form the basis of the museum's exhibits and programs telling the stories of how people have lived, worked, played and traveled in the Adirondack region since the early 1800s. Twenty buildings on 32 acres of grounds and gardens, house exhibits on logging, boats and boating, mining, outdoor recreation, transportation, rustic furniture, and on-going programs and special events. 9097 State Route 30, Blue Mountain Lake 518-352-7311, adkmuseum.org, 10 a.m.-5 p.m. daily late May through mid October.

JEFFERSON COUNTY HISTORICAL SOCIETY, 228 Washington St., Watertown. Hours: Closed Sun & Mon. Tues-Fri. 9 a.m. to 4:30 p.m. Saturday 9 a.m.-4 p.m. Archives by appointment. Info: 315-782-3491, jeffersoncountyhistory.org.

ADIRONDACK ARTISTS GUILD GALLERY, 52 Main St., Saranac Lake, 518-891-2615, adirondackartistsguild.com, Hours: Mon. - Sat. 10 a.m. to 5 p.m., Thurs until 7 p.m., Sun. 11 a.m. to 3 p.m.

WILDER HOMESTEAD, 177 Stacy Road, Burke, www.almanzowilderfarm.com. 518-483-1207. Childhood home of Almanzo Wilder, whose memories of growing up in NNY were written as "Farmer Boy" by his wife Laura Ingalls Wilder. Open daily May through October and for one weekend in early December. Guided tours of the period-decorated home, historically recreated barns, 1860s-era one-room school house, museum and gift shop. Special events throughout the season with Civil War re-enactors, a Harvest Festival, music, food vendors, children's games, and demonstrations. Open 10 a.m.-4 p.m. Monday through Saturday and noon-4 p.m. on Sunday.





Out and About

Day Trip Ideas

There are lots of things to do in the North Country and southern Ontario. Here are selected day trips in the region.

ADIRONDACK FISH HATCHERY, 103 Fish Hatchery Rd., Lake Clear, state fish hatchery raises land-locked, Atlantic salmon, 518-891-3358, dec.ny.gov/outdoor/21664.html.

ADIRONDACK FLYING SERVICE, 27 Airport Ln., Lake Placid, 20-minute scenic flights over Adirondack High Peaks, flyanywhere.com/adirondack_scenic_flights, 1-866-439-2399.

ADIRONDACK MENNONITE HERITAGE FARM, 8778 Erie Canal Rd., Croghan, a historical farm recognized by the National and State Registries of Historic Places and built by the Moser brothers who settled in Lewis County in the 1830s. The property consists of an 1840s Greek Revival style house, two 1874 barns, granary, and garage. Today the farm is run as a historical learning center dedicated to the preservation of Mennonite faith and culture and the way of life of Lewis County farmers. 315-346-1122, mennoniteheritagefarm.com

ADIRONDACK MUSEUM, Museum's exhibits and programs tell the stories of how people have lived, worked, played and traveled in the Adirondack region since the early 1800s. Twenty buildings on 32 acres of grounds and gardens, 22 engaging indoor and outdoor exhibits, historic buildings, incredible collections, great gardens, magnificent views, and on-going programs and special events offer a variety of interesting activities for the whole family. Route 30, Blue Mountain Lake, 518-352-7311, adirondackmuseum.org.

ADIRONDACK PARK VISITOR INTERPRETIVE CENTER, 8023 Route 30, Paul Smiths, 518-327-6241, adirondackvic.org, a 6.5-mile interpretive trail system with signs explaining the ecology, summer hiking, cross country skiing, snowshoeing, exhibits of Adirondack history.

AKWESASNE MOHAWK CASINO RESORT, 873 State Route 37, Akwesasne, open 24 hours seven days a week, hundreds of exciting gaming machines, dozens of table games, native harvest buffet, Pair-A-Dice lounge, gift shops, buses welcome, 1-877-99CASINO or mohawkcasinom.com

ALMANZO WILDER HOMESTEAD, 177 Stacy Rd., Burke, near Malone, home of Farmer Boy, real life character of Laura Ingalls Wilder's Little House book, store, museum, 518-483-1207, almanzowilderfarm.com

AMERICAN MAPLE MUSEUM AND HALL OF FAME, 9756 State Rte. 812, Croghan; artifacts and maple syrup manufacturing equipment, logging tools, antiques; 315-346-1107; <http://www.americanmaplemuseum.org/>.

ANTIQUE BOAT MUSEUM, 750 Mary St., Clayton, abm.org, Over 200 antique freshwater boats, motors, and engines. Boat building classes, boat shows, speedboat rides. 315-686-4104.

AUSABLE CHASM, 2144 Route 9, Ausable Chasm, 518-834-7454, wonders, nature trails, scenic vistas, rafting, kayaking, tubing ausablechasm.com.

BLUE MOUNTAIN LAKE BOAT LIVERY, Rte. 28, Blue Mountain Lake scenic boat trip, 1916 wooden launches, tours, rentals, instructions, sailing, canoeing, camping, 518-352-7351, boatlivery.com/index.html.

BOLDT CASTLE, on Heart Island, Alexandria Bay, boldtcastle.com. Accessible by boat, 120 room Rhineland castle belonging to George Boldt, begun as a gift for his wife, but abandoned at her untimely death. Undergoing magnificent restoration. 315-482-9724 or 315-482-2501.

CHATEAUGAY FISH HATCHERY, 134 Fish Hatchery Rd., off Route 11, Chateaugay, lake, brook, rainbow and brown trout. Free. 518-497-6151, dec.ny.gov/outdoor/21664.html.

CLAYTON OPERA HOUSE, performance and community center, 403 Riverside Drive, Clayton, 315-686-2200. Variety of performances throughout the summer season. claytonoperahouse.com,

DOBISKY VISITOR'S CENTER, 100 Riverside Ave., Ogdensburg; nestled along the banks of the St. Lawrence River with a boater's lounge with showers and laundry facilities, meeting rooms that hold over 100 people, a large roofed outdoor deck, kitchen area, food and beverage concessions and handicap accessible restrooms. There is a marina, gazebo, "Kids Kingdom Park," tennis courts, basketball courts, skateboard park, pool, entrance for Maple City Recreation Trail - all within walking distance from the Dobisky Visitor's Center; 315-393-1980. ogdensburg.org/facilities/facility/details/Dobisky-Visitors-Center-8

ENCHANTED FOREST/WATER SAFARI, 3183 Route 28, Old Forge, watersafari.com. Over fifty water rides and attractions including "Tidal Wave Pool" and the "Amazon," a family river ride. 315-369-6145.

EVANS MILLS SPEEDWAY, 28412 Steinhelmer Rd., Evans Mills. 315-221-9180 or facebook.com/Evans-Mills-Speedway-341227299259087/.

FORT HENRY, KINGSTON ONTARIO Both museum and spectacular historic site of 19th Century British military fortress. Experience the realm of 19th Century military life, guided tours, performances and demonstrations. forthenry.com. 1 Fort Henry Dr., off County Rte. 2, Kingston, Ontario, Canada. 1-(613)-542-7388.

FREDERIC REMINGTON ART MUSEUM, 303 Washington St., Ogdensburg; over 2,500 Remington-related items including oil paintings, bronze sculptures, published works, letters, journals, photographs, studies, watercolors, sketches, more; info: fredericremington.org/, 315-393-2425.

FORT TICONDEROGA, 100 Fort Ti Road, Ticonderoga, (518) 585-2821. Historical reenactments of battles from Seven Years' War and American Revolution, overlooking Lake Champlain. Museum, costumed interpreters, musket demonstrations, gardens, museum store, restaurant, picnic grounds. fort-ticonderoga.org

GREAT CAMP SAGAMORE, 4 miles south off Route 28, Raquette Lake. Adirondack Great Camp, former summer of Alfred Vanderbilt family, built in 1897 by William West Durant. 27 buildings, tours, courses, retreats, 315-354-5311. sagamore.org

JOHN BROWN FARM STATE HISTORIC SITE, 115 John Brown Rd., Lake Placid. Home and burial site of famed abolitionist leader of 1850 raid on National Arsenal at Harpers Ferry, Va. 518-523-3900, nysparks.state.ny.us/historic-sites/29/details.aspx

LAKE PLACID OLYMPIC SITE, Lake Placid-Wilmington area, 1932 and 1980 Olympic Museum and Hall of Fame, video highlights, uniforms, equipment, Olympic ski jump complex, Mt. Van Hoevenberg Olympic Sports complex. (518) 523-1655 or whiteface.com/facilities.

MINNA ANTHONY COMMON NATURE CENTER, 44927 Cross Island Rd., Fineview exit 51 off I-81 near Alexandria Bay; bird walks, cross country skiing, trails, fishing. 315-482-2479 or nysparks.com/environment/nature-centers/2/details.aspx

MOHAWK INTERNATIONAL SPEEDWAY NYS Hwy. 37, Hogsburg. May through September, modifieds, pro-stocks, semi-pros, bandits, slick track enduro facebook.com/MIRtrack

NEW YORK STATE ZOO AT THOMPSON PARK, 1 Thompson Park, Watertown. Dedicated to New York's wild animals and wild places, black bears, wolverines, Adirondack fire trail. 315-782-6180, nyszoo.org/

OGDENSBURG COMMAND PERFORMANCES, 1100 State St., Ogdensburg; entertainment productions; info or upcoming schedule: 315-393-2625 or www.ILoveTheatre.org

OLD MCDONALD'S CHILDREN'S VILLAGE, North Harbor Rd., 14369 County Rte. 145, Sackets Harbor. Children's farm animal village with Wizard of Oz hayride, mini-golf, pick pumpkins, visit animals, 315-583-5737; OldMcDonaldHasAFarm.com

RAQUETTE LAKE NAVIGATION COMPANY, Raquette Lake, boat tours, cruise and dine, scenic excursions, moonlight cruises, fall foliage, camps of J.P. Morgan, Vanderbilt and Huntington, private charters. 315-354-5532 or raquettelakenavigation.com

SANTA'S WORKSHOP, Off Route 83, Wilmington. Alpine village with Santa Claus, helpers, live reindeer, animal park, storybook characters, children's rides, crafts, musical shows, (518) 946-2211 or northpoleny.com

SIX FLAGS GREAT ESCAPE AND SPLASHWATER KINGDOM, Route 9, Lake George. Over 135 rides, shows, and attractions. 518-792-3500 or sixflags.com/greatEscape/index.aspx

SCI-TECH CENTER OF NORTHERN NEW YORK, 154 Stone St., Watertown. Hands-on science center, more than 40 interactive exhibits, specialty art classes and programs, school tours, birthday parties. 315-788-1340 or scitechcenter.org

SINGER CASTLE ON DARK ISLAND Chippewa Bay on the St. Lawrence Seaway. Frederick G. Bourne of New York City (a contemporary of George Boldt) had this castle built as a hunting retreat for his family. Italian stonecutters cut granite to shape this 3-story, 28-room castle with a 5-story clock tower and elaborate boathouse. Boat tours are offered from Chippewa Bay by Schermerhorn Harbor Shuttle, 315-324-5966 and from Alexandria Bay by Uncle Sam Boat Tours, 877-253-9229. Charter group tours can also be arranged. Info: 1-877-327-5475, or singercastle.com

STONE MILLS AGRICULTURAL MUSEUM, 30950 Route 180, LaFargeville. Museum telling the development of the agricultural industry in Northern, NY, historical materials relating to farm and farmhouse in Jefferson, St. Lawrence, Lewis & Oswego Counties. 315-658-2353 or stonemillsmuseum.org

THOUSAND ISLANDS ARTS CENTER, 314 John St., Clayton, formerly the Handweaving Museum & Art Center, preservation and promotion of traditional arts and handcrafts, Handweaving Museum, gallery exhibits, craft shows, gift shop, pottery classes, events. 315-686-4123 or iartcenter.org

THOUSAND ISLANDS LAND TRUST (TILT), 135 John St., Clayton, non-profit organization working to conserve the natural beauty, diverse wildlife habitats, water quality and outdoor recreation opportunities of the 1000 Islands region. over 8,200 acres of land, over 30 miles of trails that are open to the public, year-round. 315-686-5345, info@TILandTrust.org, www.TILandTrust.org

UNCLE SAM BOAT TOURS, 45 James St., Alexandria Bay. Tours of the St. Lawrence Seaway and Thousand Islands. For departure times: 315-482-2611, sboatours.com

UPPER CANADA VILLAGE Authentic buildings comprise this village from the 1860's. Period costuming and activities capture the seasons and cycles of rural village life. 13740 County Road 2, Morrisburg, Ontario, Canada. 613-543-4328 or uppercanadavillage.com

WATER SLIDE WORLD, exit 21 off I-87, 2136 Rte. 9, Lake George. Wave pool, 35 water slides, volleyball. 518-668-4407, waterslideworld.net

WHITE PINE CAMP TOUR, White Pine Road, Paul Smiths, guided walking tour of historic Adirondack Great Camp, served as summer White House in 1926 for Pres. Calvin Coolidge, public tours Wednesdays late June through Sept. and Saturdays late June through early Sept. Info, reservations: 518-327-3030 or whitepinecamp.com

WHITEFACE MOUNTAIN MEMORIAL HIGHWAY, Wilmington, whiteface.com/activities/whiteface-veterans-memorial-highway, panoramic views of the Adk High Peaks, along a five-mile toll road, elevator to top, historic toll house, castle and tunnel. 518-946-2223.

THE WILD CENTER A 31-acre campus in Tupper Lake featuring live exhibits, hiking and naturalist guides. Theaters with films, hands-on nature, hundreds of live animals from rare native trout, to river otters, to turtles Info: 518-359-7800 or wildcenter.org



Out and About

Antique Stores (within one hour drive)

Canton

THE GLASS BUBBLE, old and new collectibles, Depression glass, jewelry (over 4000 pieces), Bisque dolls, Graniteware, some, some small furniture, ironstone, coins, some paper money, comic books, Nippon, some military memorabilia, cookie jars, cups and saucers. Open 8 a.m. to 9 p.m., Monday through Sunday, year-round. Terry Faucher, Proprietor, 1278 Old DeKalb Rd., 315-386-3228.

GRASSE RIVER ANTIQUES, Buy and sell glass and china. Depression glass. Open by chance or appointment; 315-322-5706; wishlist@twc.com; Marion McIntosh, Prop., 2905 County Rte. 14, between Madrid and Morley, watch for sign.

K & M ANTIQUES & COLLECTIBLES, 167 Hale Rd., 315-386-2756, Karen Averill and Mavis Bush, proprietors; costumejewel@gmail.com; large collection of vintage costume jewelry. Featuring antique pins and coins; wide selection of collectibles.

CLASSY COLLECTIBLES, 2798 Ct. Rt. 21; 315-714-2395.

Colton

TOAD HOLLOW TREASURES, 233 Chapel Hill Road, Colton. Tom & Debbie Taillon, 315-265-7287 or 315-261-0784. Open by appointment, by chance, or at Classy Collectibles, Canton, or Massena Market Place. Buys and sells general lines of antiques & collectibles.

DeKalb Junction

OLD GENERAL STORE, 4352 U.S. Hwy. 11, 315-347-1340; multi-dealer shop featuring a large variety of antiques and collectibles ranging from glassware to furniture and primitives. Buying individual items or estates. Owner, Paul Hitchman, www.facebook.com/The-Old-General-Store-Antique-Shop-DeKalb-Jct-NY-209574209783753/.

TREASURED ANTIQUES, 3 School St. and Route 11, 315-347-1604, hidden treasures, rare finds and trendsetters of antiques and collectibles, <https://treasuredantiques.wordpress.com/>, www.facebook.com/TreasuredAntiques.

Gouverneur

ANTIQUES AND COLLECTIBLES, 887 U.S. Hwy. 11, Gouverneur, Melodie Kirby, 315-287-4543 or 315-528-5195. Coca-Cola items, Star Wars, sheet music, records, games, GI Joe items, tin toys, pedal cars and tractors, robots, metal lunch boxes, books and more. Open by appt. only www.storesonline.com/site/antiquescollectibles.

Gouverneur

KOBWEB KORNER, 1050 US Highway 11, 315-287-4984, Ron Burt, burt_song@yahoo.com, proprietor; antique & collectible flea market. Multi-vendors. A little bit of everything from toys to furniture. Located at The Red Barn House. May through Oct. daily 11 a.m. to 6 p.m.; Nov. through April by chance or appointment.

Hammond

LAKE SIDE TREASURES & MARINA, 3675 County Route 6, 315-375-4436, constantly changing inventory, 2,500 square feet of antiques and collectibles, primitives, furniture, fishing tackle, glass, tools, gifts, closed Wednesdays. <https://www.facebook.com/Lakeside-Treasures-117583244928206/>

Helena

LANTRY'S ANTIQUES, Sharon Lantry, Depot St., Helena, 315-769-5641. General line of early country furniture, china, paintings, prints, primitives. Open year round by chance or appointment.

Heuvelton

BREAKABLE COLLECTIBLES, Erwin & Becky Selleck, 61 Rensselaer St., 315-344-2480. Decorative smalls including glassware, time pieces, ephemera and costume jewelry. Upstairs in the "yellow bedroom" at The General Store in DeKalb Junction. Also open at home by appointment or chance. Email ecbs45@verizon.net.

FLO'S TRINKETS, Tom & Flo Woodward, 714 East Rd., 315-344-8820 or 315-344-8893, large collection of old costume jewelry, glass & pottery, old & new collectibles. Open Saturdays or by appointment. Take Rt. 812 of Heuvelton toward Rt. 11. Take first right onto East Rd., 2 miles up on the left.

Lawrenceville

ANY OLDE THING, Laura Murphy, 11484 US Hwy 11, 315-389-4900 or 315-328-5911. Booths located at The Paperback Browser. Kitchen collectibles, pottery and glass, books, old tools, bottles, music items, furniture, ephemera and country collectibles. Open Fri. & Sat. from Jan. to mid-May, 10 a.m.-4 p.m.; Thurs.-Sat. mid-May to Dec., 10 a.m.-4 p.m. Call to be sure of hours. Email lauraj.murphy@yahoo.com.

DUE NORTH BY DESIGN, 315-769-7828, duenorth@twcnr.com, booth in paperback browser and peddlers closet, vintage furniture and home decor, specializing in painted furniture. <https://www.facebook.com/duenorthbydesign/>.

Lawrenceville

THE PEDDLER'S CLOSET AND PAPERBACK BROWSER, Route 11, North Lawrence, 315-389-4900, <https://www.facebook.com/The-Peddlers-Closet-at-Paperback-Browser-139524...> . Open Thursday, Friday and Saturday, 10 a.m.-4 p.m. Various antique and home decor dealers with booths.

Madrid

EMPORIUM ANTIQUES AND NEWTIQUES, 4690 County Route 14, Madrid, between Madrid and Chase Mill, 315-276-8875. Open by appointment or by chance or at Classy Collectibles in Canton. Features antiques and collectibles, over 1,000 items.

Massena

FABULOUS FINDS BOUTIQUE & CONSIGNMENT, Cynthia Aracadi, 535 South Main St., 315-514-1334. Antiques, collectibles, coins, jewelry, clothing. Red building past the railroad track on the left. Open Tues.-Sat., 9 a.m.-6 p.m. Consignment Tues-Thurs. Email - fab.findsboutique@hotmail.com. <https://www.facebook.com/FabulousFindsNY>.

MASSENA MARKETPLACE, John Gardner, 528 South Main St., 315-705-4258. Homecrafted furniture, toys, dolls, lamps, china and glass, jewelry and coins, books and paper, new and old primitives. Oct.-May, closed Tues.; May-Oct. open 7 days per week - Sun.-Wed., 10 a.m.-5 p.m., Thurs & Fri., 10 a.m.-6 p.m., Sat. 9 a.m.-6 p.m. <https://www.facebook.com/MassenaMarketplace/>.

MOLLY'S ANTIQUES & COLLECTIBLES, 315-769-3196; sblais1@twcny.rr.com. Variety of items including primitives, tools, furniture, new and old collectibles, flea market treasures. Massena Market Place, S. Main Street & Classy Collectibles, Canton. Buy, sell or trade. Steven Blais, proprietor.

NORTH RACQUETTE ANTIQUES, 928 North Racquette River Road; Carol Hartle, proprietor; 315-769-5697; specializing in furniture, glass, china, lamps, picture frames and a general line of fine antiques; open Friday through Sunday 10 a.m. to 4 p.m., Monday through Thursday ;by chance or appointment year-round, heated shop. Look for green sign.

Morristown

MARE'S WARES, varied line of traditional antiques, artist-made pottery, and unique one-of-a-kind gifts; scenic Route 37 just outside Morristown, in the same building as the famous "Evan's House - Home of The Muskie," mixture of the traditional, contemporary, and outrageous; by chance or appointment at 315-375-8214, or mareswares@hotmail.com, <https://www.facebook.com/Mares-Wares-Arts-Fest-127924893899044/>

Norfolk

NORTH COUNTRY PINS AND PAPER, Jason Clark, 617-312-8594, Norfolk. Buying and specializing in vintage pin backs, advertising, ephemera and smalls. Especially interested in railroad, tobacco, gambling, sewing, Americana, gasoline, political, olympic, labor, World's Fair, space, maps, bottle openers, military medals, paper dolls and academia items that fit within the previously mentioned categories. Also interested in German steins, Steiff animals, hand crafted baskets and items handcrafted by our Native American Indian neighbors. www.biblio.com/bookstore/north-country-pins-and-paper-norfolk.

Norwood

ASHLEY HOUSE, 1 Park St., 315-353-4609, multi-dealer shop offering a wide variety of quality furniture, antiques, collectibles, and new gifts, set in a stately brick home; always buying quality pieces and estates. <https://www.facebook.com/ashleyhousehomedecor> .

STICKNEY'S ANTIQUES, Carlton Stickney, 315-384-4764. Glassware, pottery, porcelains, lamps and small furniture. Booth at Massena Marketplace and Market Barn, St. Hwy. 11 in Malone. Glassware at Pear Tree in Canton.

WILLOW CREEK CHAIRS, Renee Baxter, 1137 Old Market Rd., 353-2543. Antiques, refinishing, upholstery, caning and rush work. Located in Knapps Station. Mon.-Sat. 10 a.m. to 5 p.m.

Ogdensburg

O'DONOGHUE'S COUNTRY ANTIQUES, Robert O'Donoghue, Arnold Rd., 315-393-1505. Country furniture, quilts, baskets, decoys, decorative accessories. Open by chance. Also at The Old General Store in DeKalb Junction. Email rslr@verizon.net.

Potsdam

ARGENT'S JEWELRY & COIN SHOP, 32 Market Street, 315-265-6389. <https://www.facebook.com/argentsjewelry/> .Antiques, estate jewelry, collectibles

JOE BERNER ANTIQUES, 315-265-3184, www.jbagold.com/. Antiques and collectibles wanted, one piece or entire estates. BEST FRIENDS THRIFT SHOP, 8 Raymond St., Potsdam, 315-262-4959. <https://www.facebook.com/Best-Friends-Thrift-Shop-Potsdam-NY-168744249805215/> .Antiques and collectibles, along with thrift store style items.

Potsdam

BIRCHBARK BOOKSHOP, 75,000 books, also rustic and modern furniture built by owner and Fred Peryer; open year-round. Hours: 1-6 p.m. Saturday & Sunday. Directions: South on Route 56 past Potsdam College to Route 72 on left, after 4.5 miles, just past sign for Parishville Center, turn right onto Ashton Road, bear left at Y in road, third house on left. Also at Evans and White Ace Hardware, Maple St., Potsdam. <https://birchbarkbookshop.wordpress.com/>

NORTH COUNTRY NEIGHBORS, 6 Main St., downstairs, Potsdam, 315-268-1055; 5,500 sq. ft. flea market featuring over 50 vendor booths; used, vintage and antique items including books, toys, home accents and smalls of every kind. Cathy Connolly, owner. <https://www.facebook.com/North-Country-Neighbors-109316925766200/>.

WHO KNOWS WHAT, "Potsdam's new quaint emporium," 2 Elm St., 315-250-3951; www.facebook.com/argentsjewelry/; call for hours.

TREASURES COVE, THRIFT & GIFT STORE, 22 Market St., Potsdam; t.c.treasures.cove@gmail.com, 315-261-4113; <https://www.facebook.com/Biz4Us/>; Laura and Jay Taylor, proprietors; vintage vinyl, clothing, thrift items, some antiques.

Raymondville

ICE HOUSE ANTIQUES, 8705 NYS Hwy. 56, Raymondville; Darian and Stacy Maslin, proprietors. Open by chance or by appointment. Carrying a varied line of primitives, antiques, collectibles, glassware, pottery, tools, furniture, lighting, toys, jewelry, kitchen collectibles, ephemera, vintage linens and clothing. Adding new inventory daily. 315-384-6043; sdmaslin@yahoo.com, <https://www.facebook.com/Ice-House-Antiques-344054709055857/>.

Rensselaer Falls

RIVER HOUSE WARES & RESTORATION, over 2,500 period doors (12"-54" wide) and windows (small pane) in stock. Thousands of architectural restoration materials, vintage hardware, trim moldings, spindles, shutters, porch posts, railings, unique light fixtures, cast iron floor registers, claw foot bathtubs, pedestal sinks, toilets, urinals, fireplace fronts and more. 1950's vintage bowling alleys for counters and islands and oak and cherry stairway rails. Open by chance or appointment-appointments are chancy. Call Kyle "Fireball" Hartman at 315-344-8882 or 315-344-7247. Consultant Service available. E-mail kyle57@twcny.rr.com or website www.riverhousewares.com.

VINTAGE PAPER, collection of original advertisements about automobiles, soda pop, toys, trains and large collection of local historical photographs. Open by chance or appointment-appointments are chancy. Call Kyle "Fireball" Hartman at 315-344-8882 or 315-344-7247. Consulting services available; E-mail: kyle57@twcny.rr.com or website www.riverhousewares.com.

