



Phoenix Artists Guild

Volume 158

February, 2025



PRESIDENT'S MESSAGE – February 2025



Jo Allebach was an inspiration to all of us. I never saw her when she didn't have a smile on her face. Even with all the medical issues she had had in the past few years, she was an active member of PAG. We can be reminded to work at our craft, enjoy what we do and participate, as she did.

++We will be looking to fill the Recording Secretary position for the remaining year and for next year, as well. Other positions

for next year are 1st VP and Treasurer. We need people to step and help us out. Without these positions filled, next year will be difficult for the remaining board members. Please contact Cindy Chambers, 602-828-0604.



The Madison Center for the Arts Exhibit and Sale

Exhibit dates: March 17 – June 5, 2025

Reception: Thursday, March 27, 2025, 6-7pm VIP, 7-8pm Open to Public

Drop Off: Monday, March 17, 2025 – TBA

Pick Up: Friday, June 5, 2025 – TBA

Deadline is February 24, 2025

Questions call Cindy Chambers-602-828-0604

Entry form on our website.

Cindy Chambers
PAG President



Creative Corner

A GREAT APPROACH TO STARTING A NEW PAINTING

By Elaine Waters

When you begin a new painting, it is very exciting, and you are anxious to start. The problem is.... You really should start the painting in your mind.... With a plan.... You should know what the painting will be about... what is the center of interest... why you have chosen the subject... a basic color plan are you going to include all the things in your resource photo... what will you leave out.... Where is your one light source, is the lighting warm or cool.... is the subject something you know about, or is it just an interesting photo you found somewhere. If you have thought about ALL these things, perhaps you are now ready to begin.

This seems VERY elementary... but consider a vertical or horizontal composition. Lightly draw in horizon line, eye line, and the basic design lines of your composition, then the placement of objects in your composition. You may want to use vine charcoal paint. I don't suggest a pencil because paint sometimes doesn't cover pencil. After this is done, decide if your composition satisfies you.... If it does... THEN you are ready to do an underpainting. There should be NO detail in an underpainting.... You are just making sure your painting plan will work. If it looks good.... YOU ARE READY!

Some artists work forward from the back of the painting... some don't. I start with the dark value areas. When you begin the actual painting... after all this preliminary work... do not do any detail ...especially in anything but the center of interest. Just suggest what is going on.... You don't need to paint each tree in the forest ... just suggest the forest, then the water in the stream... then the placement of the center of interest..... When you feel that all is good... Then you can put more detail in your painting and use more paint. Gradually, work around your painting... and save the detail for the center of interest. Too many times, I have seen too much detail too soon, and then the artist doesn't know how to handle the rest of the painting.

While you have been doing all this painting, you should consider your color plan, the value plan of the composition, and remember to use the proper light and shadows. Many times, inexperienced artists will put the shadows in AFTER the paint is well on its way.... BAD MISTAKE.... Shadows are an important dark value part of your composition.

Many times, an artist will be tired or bored with working on a painting... and will consider it finished before they give it a chance to be the best it can be. Don't rush it... if you think that you can make it a better painting, think about it ... Give it a chance to mature into a great painting.

February Demonstrator – Michael Garcia



Mike Garcia is an award-winning painter and art instructor based in Phoenix, AZ. He is the painting instructor at the Loft Studio in Tempe, where he previously studied classical drawing and painting under Matt Dickson. Mike also regularly teaches classes at Scottsdale Artists' School, and he offers private drawing and painting mentorship in-person and online. In addition to teaching, he frequently exhibits his work in groups and solo shows.

Mike primarily paints portraits and the human figure. His art resides in private collections both locally and internationally. He has selected work available through T.H. Brennen Fine Art in Scottsdale, AZ.

Meeting Agenda

Monday, February 24, 2025
6 – 6:45pm – Critique by Julie Frye
6:45 – 7:15pm – Business Meeting
7:15 – 7:30pm – Social Time
7:30 – 8:30pm – Demonstration Featuring Michael Garcia



Artist of the Month: January

1st - Lynne Rogers

2nd - Pat Washburn

Remember to only enter 1 piece of artwork each month. Also, once you have won, you can't enter another monthly competition during the current year. You are eligible for Artist of the Year, held at the May general meeting.

August – Lois Miller, September - Tim Morrison, October – Alike Kumar

+++++

February Birthdays



Sheila Bellinger

Grant Washburn



ARIZONA ART ALLIANCE REPORT – Grant Washburn PAG Rep.

Upcoming Event:

Madison Center for the Arts – March 17, 2025

Holland Center



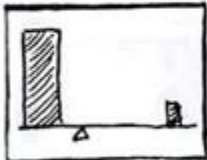
Set Up: Monday, April 7, 2025 – 9:00-10:00am Hang 10-12

PICKUP: Thursday, April 29, 2025 – 9-10am

RECEPTION: Saturday, April 12, 2025 – 3-5pm

Members' Activities:

February — Draw or paint a unique perspective or a closeup of your favorite place (landscape, seascape, cityscape or an abstract). Use the following compositional structure:



Steelyard: A scale with two unequal sized masses, the fulcrum placed toward the larger one. The focal point should be on or near the fulcrum or main weight.

March is springtime! Create art that celebrates spring. Use the following compositional structure:



Circle: Similar to the steelyard, the circle or O composition. It should be roughly indicated, not obvious; as such, it can be a rough circle, also taking on the appearance of a rectangular or irregular opening.

Artist Opportunities

A list of artist opportunities. You can go to their websites for additional information.

- Artlink.com
Azarts.gov/opportunities
Az Art Alliance website
Herbergertheater.org
- phoenix.gov/arts
scottsdalepublicart.org
shemerartcenter.org



Elaine Waters will be having a Fine art Exhibit and Sale located at 2330 W. Mandalay Lane, Phoenix, 85023, February 22, & 23, 2025, 10am to 5pm each day.

Ways and Means will be having a signup sheet if you would like to set up a table to sell art at the General Meetings. The cost will be \$5.00 or 10% of your sales. You must man your table and collect your own money. Julie will have her new Christmas cards and other things available at the September meeting.





Membership forms will be at each of the General meetings and on our website. Annual fees are \$50.00.



Please **remember** to submit your artwork for Back Page art.
Send to Cindy Chambers at: tees2others@gmail.com

Remember also to submit your artwork for Members Monthly Activity and Artist of the Month.



Outreach will be collecting cans of **SOUP** and cans of **CHILI** for the February meeting. We collect for the Valley View Food Bank. Examples, Old glasses will also be collected.

OFFICERS FOR 2023-2024

President	Cindy Chambers
1st Vice President (Program)	Julie Frye
2nd Vice President (Exhibits)	Nancy Donovan
Treasurer	Paula Sandera
Recording Secretary	Jo Allebach
Corresponding Secretary	Sheila Bellinger



For just \$25.00 a year!!!

This includes one additional mid-year image exchange! Then you can change-out again. **Include it in your annual membership dues** – how easy is THAT?!

We are increasing traffic flow and visitors to our site and piquing their interests WHEN THEY GET THERE!

Julie Frye is now your webmaster, (Chuck and Alike Kumar assisting) so get YOUR LINK on the PAG website and get these advantages WORKING for YOU!

Just send the following info. to Julie Frye, juliefrye381@gmail.com, A JPG (as least 300dpi) of one of your pieces

- The title of the piece
- unframed sizes, media
- Your name, email address, website link, (remember-link it back to PAG site, to increase traffic) Organizations to which you belong.

Computer Corner



ARTIFICIAL INTELLIGENCE

You may all be familiar with ChatGPT, and AI assistant that generates realistic conversations. It was developed by an organization called open AI. In this scam, cybercriminals could send you a phishing email that appears to be from OpenAI. The email warns that you will lose access to ChatGPT unless you update your payment method and pay a subscription fee.

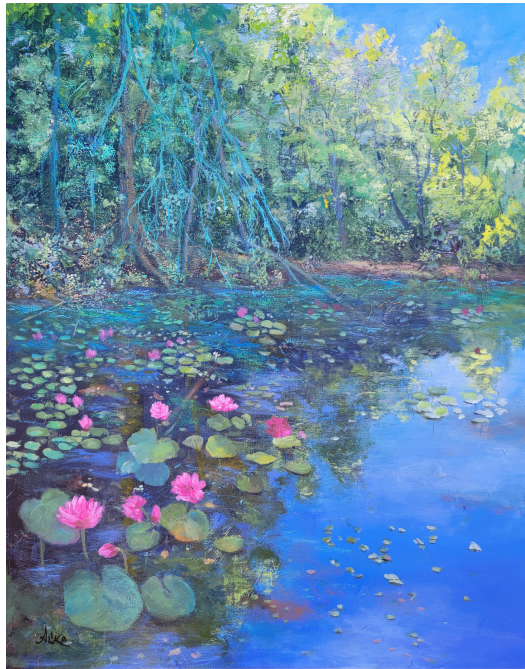
The email appears to be legitimate, and it even contains the OpenAI logo and an official support email address in the text. But like many phishing scams, the email also includes a link to a fake webpage asking for your personal data and credit card information. If you click the link and enter your information, your subscription to ChatGPT will not be renewed, instead, the cybercriminals will have stolen your personal information and money!

- When you receive an email, stop and look for red flags. If you have doubts, always visit the official website to verify the email you received is legitimate.
- Always hover your mouse over links in email. Watch out for spelling mistakes, unusual domains, or suspiciously long URL's that can hide a website's true domain.

BACK

PAGE

ART



“Dappled – II”, Acrylic by Alika Kumar



Arizona Art Supply
The largest Fine Art Supply Retailer in the Southwest
Serving Arizona Artists for over 65 years.

Is a proud supporter of Phoenix Artists Guild.
PAG Members Receive 20% Off All Non-Sale Items!
www.arizonaartsupply.com
Phoenix—Tempe—Scottsdale—Sun City—Tucson

Meetings:

4th Monday of Month
AAG Building
18411 N. 7th Avenue, Phoenix

Contacts:

Cindy Chambers - President
Pat Washburn – Membership

Membership \$50.00 per year/May-April