



# Phoenix Artists Guild

Volume 142

April, 2023



## PRESIDENT'S MESSAGE - April 2023

Inspiration: It's all around us. The world is full of ideas and ways to inspire us to create.

Look to NATURE . Grab a sketchbook and head outdoors. From a single rose petal to an eagle soaring overhead. You only have to look around.

INTERNET & SOCIAL MEDIA: Looking at other artist works is a way to get inspiration. Pinterest has all kinds of materials for ideas. Watch your time on the internet, set a timer so you can stay focused.

PEOPLE around you. Pay attention to the people you see every day, a stranger on the street, kids playing at a park.

NETWORKING: is a great to find inspiration. Attend exhibitions and events

where other artist exhibit their work and talk to them. Meeting and chatting with creative people can be inspirational and fun.

**LOOK  
WHAT'S  
NEW!**

## Members Activities:



**April** It's April Fool's Day and a chance for rain and storms.

**Challenge:** Create a work that includes rain or raindrops.



**May** This month Look at all the things you thought you knew with careful observation and **create**.



# Creative Corner

## How Can I Paint Better Trees? Study Your Resource!

By Elaine Waters

In a painting class in Anchorage about 55 years ago, the instructor, a very good colorist... was asked by one of the students, "What color brown do I use for the tree trunk?" The instructor turned around and said to her... "NEVER PAINT A TREE TRUNK BROWN!". So, I cannot tell you how to paint trees.... You need to answer these questions yourself, then you will learn how to paint trees. If possible, have a photo resource, or an actual landscape tree (or trees). Please do not copy someone else's painting. What kind of trees are these trees? Is it a forest, or are they trees spread about? What do the trunks look like? Skinny, broad and strong, does it change width from the bottom to the top.? Do I see the whole trunk, or do I just see bits and pieces of it? Is it all the same color or VALUE...or do those things vary? Is the trunk one color, or should I use different colors next to each other?

Does the color and value of the trunk colors change because of the cylindrical shape of the trunk? Generally, there are 5 (yes I said 5) value planes to a cylindrical tree trunk. We don't see them because some are on the "other side" of the tree. But we have to know that they are there.

What kind of branches does it have? How do the branches grow out of the trunk? Do they grow from all over the trunk or do they grow out from a Knob at the top of the tree? Do they all grow UP, or do they bend down when they get heavier. Note: Branches grow out from the backside as well the front of the tree. They don't just grow out of the sides of the tree. Are they big and strong or are they little and fragile looking? Are they the same color as the trunk? What kind of foliage does it have? Needles, leaves, fronds (as in palm fronds).

What is the general shape of the tree.... Short trunk and round branches and foliage or tall trunk with elongated round foliage area? You may have both kinds or even more kinds in your resource photo. It is your painting... you can move them around to wherever you please.... As long as they fit into your composition.

The foliage of the central part of the tree is usually darker and thicker than the foliage nearer to the tips of the branches. If you remember this fact, your tree will have a three dimensional look, otherwise, it may look flat.

What colors do I use to paint the trunks and the foliage? You can use any color you want. Usually, foliage is some sort of green. Any mixtures of yellow and blue will work... but you usually must consider warm and cool and value contrasts. Avoid using Sap Green and Viridian straight out of the tube.... They MUST be modified. Use grayed palette colors for the trunks.

How do I paint realistic shadows of the trees? Use transparent colors... thinly so that you can still see the lands, roads and grasses near the trees. Don't paint them too dark and with mud and remember a shadow is JUST an interruption of light... it is not a REAL THING. Well, painting trees is a HUGE subject, but certainly one worth paying attention to. And... by the way.... The painting instructor who was trying to teach his class about painting trees, actually, bought one of my landscapes. I guess he liked my trees!

## April Demonstrator – Marless Fellows



My life as an artist started when I was quite young watching my father draw little elephant which was magical to me. I think that planted a creative seed in me and the passion grew.

Growing up living on a small ranch with my family and raising horses and animals inspires me today to paint the western way of life. This drives me to keep the simple yet beautiful west alive through my paintings.

My medium is oil because it gives a painting life like no other. Beautiful color and sharing the emotion in a painting is what seems to give me and my viewer great joy.

I mostly work with linen canvas because when you work this hard you want quality.

Not many things in my life has been this difficult and challenging and yet so wonderfully fulfilling as being artist. When I'm painting something happens and I get lost in the joy of what I am creating. It's a passion that comes from within that keeps me painting daily.

Meeting Agenda

Monday, April 24, 2023  
6 – 6:45pm – Critique  
6:45 – 7:15pm – Business Meeting  
7:15 – 7:30pm – Social Time  
7:30 – 8:30pm – Demonstration Featuring Marless Fellows



Artist of the Month

1<sup>st</sup> Place – Tonnie McBroom

2<sup>nd</sup> Place – Pat Washburn

Remember to only enter 1 artwork piece each month. Also, once you have won, you can't enter the monthly Artist of the Month. You will be eligible for Artist of the Year – held at the May Meeting.

Winners: August-Mary Groves, September-Gary Merrill, October-John Mansour, November-Dean Grissom,  
January-Cindy Chambers, February-Joann Almich



**April Birthdays**



Joann Almich, Jaxine Cummins, Elaine Waters, Tracy Laasch



ARIZONA ART ALLIANCE REPORT – Grant Washburn PAG Rep.

# Artist Information

WHAM Exhibit will be in October 2023. Not too early to start thinking about what you're going to enter



Please **remember** to submit your artwork for Back Page art.  
Send to Cindy Chambers at: [tees2others@gmail.com](mailto:tees2others@gmail.com)

**Remember** also to submit your artwork for Members Monthly Activity and Artist of the Month.

---



Outreach will be collecting non-perishable foods and supplies for Banner Health. Old glasses will also be collected.

## OFFICERS FOR 2022-2023

President	Cindy Chambers
1 <sup>st</sup> Vice President (Program)	Julie Frye
2 <sup>nd</sup> Vice President (Exhibits)	John Mansour
Treasurer	Paula Sandera
Recording Secretary	Jo Allebach
Corresponding Secretary	Sheila Bellinger



Voting will take place for the upcoming election of officers. Nominations from the floor will still be taken for any office. Ballots will be handed out at the meeting.



**For just \$25.00 a year!!!**

**This includes one additional mid-year image exchange!** Then you can change-out again. **Include it in your annual membership dues – how easy is THAT?!**

We are increasing traffic flow and visitors to our site and piquing their interests **WHEN THEY GET THERE!**

Julie Frye is now your webmaster, (Chuck and Alika Kumar assisting) so get YOUR LINK on the PAG website and get these advantages **WORKING** for YOU!

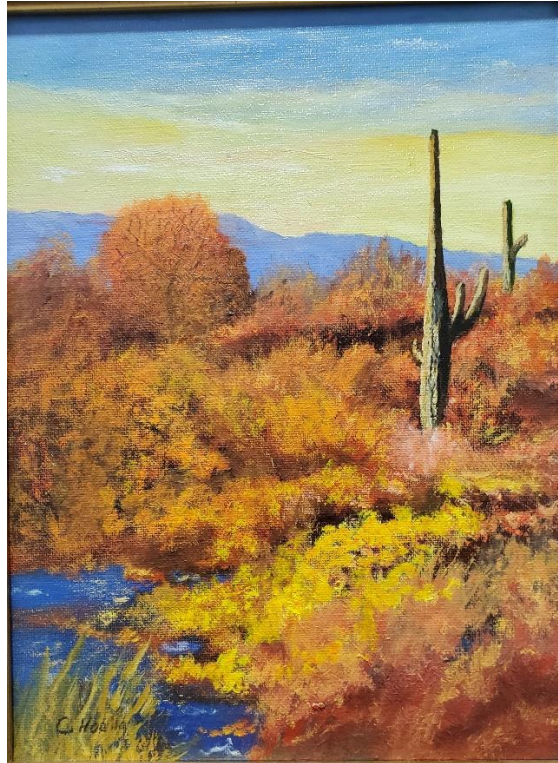
Just send the following info. to Julie Frye, ([juliefrye381@gmail.com](mailto:juliefrye381@gmail.com)), A JPG (**as least 300dpi**) of one of your pieces

- The title of the piece
- unframed sizes, media
- Your name, email address, website link, (remember-link it back to PAG site, to increase traffic)
- organizations to which you belong.


BACK

PAGE

ART



“Seasonal Arizona” Oil by Dr. Carl Hoelle



**Arizona Art Supply**  
The largest Fine Art Supply Retailer in the Southwest  
Serving Arizona Artists for over 65 years.

**Is a proud supporter of Phoenix Artists Guild.  
PAG Members Receive 20% Off All Non-Sale Items!**

**[www.arizonaartsupply.com](http://www.arizonaartsupply.com)**  
Phoenix—Tempe—Scottsdale—Sun City—Tucson

Meetings:

4<sup>th</sup> Monday of Month  
AAG Building  
18411 N. 7<sup>th</sup> Avenue, Phoenix

Contacts:

Cindy Chambers - President  
Pat Washburn – Membership

Membership \$50.00 per year/May-April