



Phoenix Artists Guild

Volume 128

August, 2021



PRESIDENT'S MESSAGE – August 2021

“If you feel something calling you to dance or write or paint or sing, please refuse to worry whether you’re good enough. Just do it.”

Glennon Doyle

GOOD NEWS! The PAG Board has decided that PAG will meet in person, face to face, starting with our August 23 meeting, and will continue to do so thereafter, unless public health guidelines suggest otherwise. ALL ATTENDING WILL BE REQUIRED TO WEAR A MASK, in compliance with CDC Guidelines. We have not been able to do this for too long, and really need to be together again. I hope you will make it a priority to join us.

The PAG Board is announcing a PAG Logo contest. Please submit your entry of a more colorful logo at the October 25 meeting. The Board will determine the winner, and the prize is a one year free PAG membership (a \$40 value.)

PAG membership is down to 24 (previously it was about 70) If you have not renewed your membership, or if you are new to us and considering joining, please do so now. We need

you. We have an impressive list of demonstrators scheduled for upcoming meetings, a number of opportunities coming for showing your work in venues around Phoenix, and we always have a very friendly group to greet you at our meetings.

You can find the Membership form for 2021-2022 on the PAG website (phoenixartistsguild.com) or email Membership Chair Pat Washburn (gwashburn2@cox.net) and she will send you the form.

I hope to see you soon!

Grant Washburn, President



illustrations of.com #434720

Members Activities for each month:

- A. August - Leaves
- B. September – Insect
- C. October – Monochromatic -any subject
- D. November – Glass
- E. January – Cityscape
- F. February – Clouds
- G. March – Abstract
- H. April – Flock of Birds



Creative Corner

CREATING CONVINCING FLESH TONES

Article by Julie Frye

I am aware that not all of you do portrait or figurative work. However, I felt that following the 10-month project painting the 8 Beatitudes for my church, each containing one or more figures, I would share (with those who have an interest) some of the things I learned fulfilling this commission.

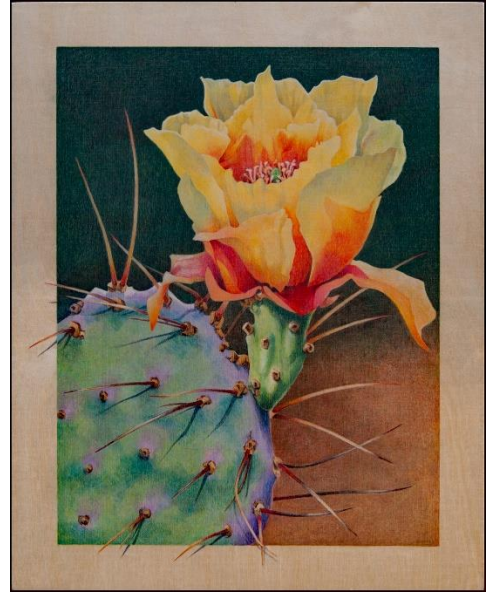
I acquired an excellent resource book recommended by a friend: "Portraits from Life in 29 steps by John Howard Sanden, famous portrait painter. In it, he explains a series of combinations he uses for his work and I found them to be extremely helpful and referred to them almost on a daily basis. The fleshtone palette consists of: Burnt Sienna, Cadmium Orange, Venetian Red, Cadmium Red light, Yellow Ochre and Titanium white. For a base tone, he starts with a mixture of Cadmium Red Light and Yellow Ochre, adding white in various amounts that produces several of the values he sees on his subject's face. He adds small amounts of Cerulean blue to cool and gray the color for the shadow areas. Let's begin with a basic mixture of Y Ochre, Cad. Red Light and white. To warm, add more Cad R. Light or Venetian Red. To cool, add Cerulean Blue. (I found it helpful to experiment with these color mixtures and make a color chart with small swatches to refer to during the painting process. Be sure to label it with the colors used.)

Remember to always establish the light source and direction. Take careful note that the values on the shadow side will be darker and cooler and there may be an off-edge or reflected light somewhere close to the shadow.

Other colors in Sanden's palette are: Ultramarine Blue, Viridian, Alizarin Crimson and Burnt Umber. (This last I avoid like the plague! Always have, always will!)

In Sanden's book there is a chapter dedicated to what he calls the Pro-mix Color System. This is where he shares what colors he mixes to achieve the lights and darks. This is the most referred to section in my book and I learned a lot from it. If you want to really stretch the envelope and make your own chart, you will have 78 flesh tones! Any age, ethnic group or lighting circumstance will be available! The book is available on Abebooks.com (used) for a very reasonable price. The library may have a copy in the artbook section. I highly recommend it! I hope that anyone interested in painting people, will explore some of these thoughts and discover some interesting hues you never thought possible! The bonus is you can use them when painting virtually any subject – Still Life, Landscape, ANYTHING!

Happy painting!



August Demonstrator – Elliott Everson

Elliott Everson is a longtime resident of Arizona and has spent many years hiking and climbing in the desert. Elliott creates his own vision of the plants, lizards and other animals of the Arizona desert working with colored pencil on paper and stone. His favorite medium, colored pencil, is well suited to exploring a variety of effects and textures. When working on natural stone Elliott creates drawings that harmonize the subjects with the drawing surface depicting the life of plants and animals that live among the rocks.

Elliott has participated in and won numerous awards in local, state and national exhibitions. Many of his commissioned works are held in private collections. His cartoons and illustrations have been published in books and brochures.

Elliott graduated with a degree in Art Education from Arizona State University, and has taught classes at the Shemer Art Center, Desert Botanical Garden and Sonoran Desert Museum. He teaches colored pencil workshops at locations in Arizona and nationally.

Elliott is a Juried Member of the Arizona Artists Guild and Arizona Art Alliance. He is a Signature Member and Ten-Year Merit Award recipient of the Colored Pencil Society of America.

You can see Elliott's artwork at: <http://www.elliottEVERSON.com>

Meeting Agenda

Monday, August 23, 2021

6 – 6:45pm – Critique

6:45 – 7:15pm – Business Meeting

7:15 – 7:30pm – Social Time

7:30 – 8:30pm – Demonstration Featuring Elliott Everson



Time to renew your membership. Forms on the website. Still only \$40.00 yearly. Please send in as soon as possible. PAG took in \$700.00 less in 2020. Dues help us with ongoing expenses. We understand things have been a challenge for all of us. It is never to early or late to pay dues.



Artist of the Year

Carmen Timm



August Birthdays



Soonthorn Cheevasit

Chuck Cummins



ARIZONA ART ALLIANCE REPORT -- Grant Washburn PAG Rep.

The AAA is looking forward to a very active year. They are planning a "Gratitude Project," which will feature art displays of original paintings with botanical themes by artists who are members of the Art Leagues that are members of AAA. PAG is a member of AAA, so our members are eligible to submit to this show. The canvases, about 360 altogether, will be displayed in the VA Hospital in Phoenix and in Mayo Clinic and Mayo Hospital in January 2022. This is a way of saying "Thank you!" To the medical workers who have worked above and beyond the call to keep us all safe during the last eighteen months.

AAA will be distributing 6 by 6 canvases to interested artists and will collect the completed work in time to mount the display.

Twelve PAG members have already expressed interest in participating. It is not too late to get on that list – just email or call Grant (gwashburn2@cox.net or 623-215-7849.) Canvases will be available at the August 23rd PAG meeting.

AAA has arranged for two art exhibits at Pinnacle Peak Presbyterian Church in North Scottsdale that will be open to members of PAG to submit work. The shows will be juried. The dates are February to May and May to August 2022. Details and application process will be available soon. Stay tuned!

SLATE OF OFFICERS FOR 2020-2021

President	Grant Washburn
1 st Vice President (Program)	Julie Frye
2 nd Vice President (Exhibits)	Cindy Chambers
Treasurer	Paula Sandera
Recording Secretary	Jo Allebach
Corresponding Secretary	Sheila Bellinger

Artist Information

Elizabeth Peterson passed away on May 11, 2021



50/50 raffle will be at the next general meeting. So, there is time to buy your raffle tickets.



Please remember to submit your artwork for Back Page art.

Remember also to submit your artwork for Members Monthly Activity and Artist of the month.



For just \$25.00 a year!!!

This includes one additional mid-year image exchange! Then you can change-out again.

Include it in your annual membership dues – how easy is THAT?!

We are increasing traffic flow and visitors to our site and piquing their interests WHEN THEY GET THERE!

Julie Frye is now your webmaster, (Chuck and Alike Kumar assisting) so get YOUR LINK on the PAG website and get these advantages WORKING for YOU!

Just send the following info. to Julie Frye, juliefrye381@gmail.com), or me- (chuckc1@cox.newt)

- A JPG (as least 300dpi) of one of your pieces
- The title of the piece
- unframed sizes, media
- Your name, email address, website link, (remember-link it back to PAG site, to increase traffic)
- organizations to which you belong.
-

CHUCK'S COMPUTER CORNER "TIPS":

Are you continually plagued with pop-up requests to download something (that appears to be of interest to you), but hadn't been expected? BEWARE!

Interaction can cause malware to gain access to your computer, such as downloading an email attachment, or installing a rogue program posing as a legitimate software of interest. The malware will "piggyback" unknowingly, to your download. The link can be sent via email, txt messages, or social media posts,

Another tactic is by compromising legitimate websites and imbedding the links within the site. It is very important for anyone with a website to keep up with security updates or risk becoming an unwitting accomplice.

Suggested Preventives: Keep your browsers updated. If you aren't sure how to check for updates for your browser, do a Google search for "updating XXX browser". Google Chrome has a Safety Check feature that will review updates for potential harmful or vulnerable extensions, by typing into the address bar: `chrome://settings/safetyCheck`.

Keep your Windows/Mac system updated. You can setup your updates to be done during non-use hours, such as after you quit for the night and/or before you logon tomorrow. You can do this by going to your Control Panel/Settings, and set your hours of expected operation/usage.

Use an ad-blocker, which gives you total control over what gets downloaded to your computer while surfing, such as: <https://bit.ly/3cMliddo>.

Be wary! Many out there have nothing more interesting to do than being destructive!

Chuck Cummins
Chuckc1@cox.net

People wonder if the glass is half empty or half full miss the point. The Glass is refillable.



“Blue Barn” Watercolor by Cindy Chambers



Arizona Art Supply
 The largest Fine Art Supply Retailer in the Southwest
 Serving Arizona Artists for over 65 years.

**Is a proud supporter of Phoenix Artists Guild.
 PAG Members Receive 20% Off All Non-Sale Items!**

www.arizonaartsupply.com
Phoenix—Tempe—Scottsdale—Sun City—Tucson

Meetings:

4th Monday of Month
 AAG Building
 18411 N. 7th Avenue, Phoenix

Contacts:

Grant Washburn - President
 Pat Washburn – Membership

Membership \$40.00 per year/May-April