



# Phoenix Artists Guild

Volume 121

October, 2020



## PRESIDENT'S MESSAGE – OCTOBER 2020

“In 2006 a high school English teacher asked her students to write a famous author and ask for advice. The only one to respond was Kurt Vonnegut. His advice: ‘Practice any art, music, singing, dancing, acting, drawing, painting, sculpting, poetry, fiction, essay, reportage, no matter how well or badly, not to get money and fame, but to experience becoming, to find out what’s inside you, to make your soul grow.’”

The Phoenix Artists Guild exists to inspire, guide and support you to practice your art in such a way that you experience “becoming”...that you “find out what’s inside you”...that allows your “soul to

grow.” If we can do that, we make a truly significant contribution to the life of our beleaguered world.

If you have not yet renewed your Membership in PAG for 2020 – 2021, I hope you will do so now. In order to pay rent, pay for the use of galleries for shows, to pay demonstrators, and pay judges to judge our shows, we need income.

--THANK YOU to Sheila Bellinger for volunteering to be nominated to be Corresponding Secretary. We will hold an election at our next meeting, and then install our officers for 2020 – 2021.

--Our next meeting is scheduled to be October 26. The Board projects that we will be able to meet in person, but if Covid conditions deteriorate – the Board could decide to cancel. We will let you know about a week before.

--The Board has determined that we will plan **NOT** to have a Holiday Party in December, as is our usual practice. For everyone’s safety, we believe this is the best course.

Grant Washburn



## Creative Corner

### **ENJOY CRITIQUING YOUR OWN ART** **By Elaine Waters**

When Julie and I are critiquing artists' paintings, we make every effort to be thorough, yet not lambasting the artist with every problem of the painting. We know that if some important problems are solved, often the artist will become aware of lesser, yet important problems that need to be addressed. The problems are usually perspective issues (drawing as well as color and value), composition and balance of objects within that composition and inconsistent light and shadow where the light is OK, but the shadows are too dark, too big or small and do not represent how the shadow of the object would actually look.

When I am critiquing, I always consider these things, but I also note other problem areas. If the art is a landscape, I look for placement of the center of interest and think about whether the artist had a plan or did they just keep adding miscellaneous bushes, trees or other things until the canvas space was covered. Adding more spotty items around the canvas usually doesn't strengthen your paintings.... It weakens the painting. I also look for good value contrasts... light and dark values next to each other for impact where you want visual impact.

If the painting is a still life, portrait, or figure, I look for placement of the subject, how the background is handled, actual focal point, warm and cool colors used and the use of light and shadow. Try to avoid using a typical school photo as your resource because the lighting is usually pretty bad. If the painting is a floral, I look for all those things and think especially about the warm and cool colors in a flower. Flower petals and leaves are not just light and dark pinks (or whatever color your flower is) or light and dark green leaves. Use grouping of flowers, not isolated ones and please, don't have them all facing the same direction.

Now, these are the things we look for when we critique.... And you should also look for those things when you critique your own art. Just pretend the art is someone else's art, then you can be as critical as you wish. Have fun with it... it will only make you a better artist!

## Meeting Agenda

Monday, October 26, 2020

6 – 6:45pm – Critique

6:45 – 7:15pm – Business Meeting

7:15 – 7:30pm – Social Time

7:30 – 8:30pm – Demonstration Featuring Diane Freeman



### **October Demonstrator – Diane Freeman**

We welcome Diane (Cramer/Roberts) Freeman who considers herself to be a water-media artist to the October meeting. She will be demonstrating the techniques of watercolor painting on rice paper with a wax resist.

Diane's art training began in Peoria, Illinois at the Academy of Our Lady High School and Illinois Central College. She has worked in various art media throughout the years and has concentrated on using water media to express her artistic talents. Diane studied with Phoenix professional artist, Julie Gilbert Pollard and has focused her watercolors on representational subject matter.

More recently, Diane has been concentrating on experimental watercolor and mixed media, contemporary, abstract, and non-objective paintings. She hopes to intrigue the viewer with her use of design elements and color that opens one's imagination to seeing reality from a different perspective.

She is a member, and President, of the Vanguard Professional Artist Group. This group was founded in 1977 for professional artists with the focus on connecting with other artists to support and encourage each other. She is also a member of the International Society of Acrylic Painters. Diane is a member of WHAM Gallery as well as being the Education Manager there.

You may see Diane's work at her site: [www.dianefreemanartist.com](http://www.dianefreemanartist.com)  
or contact her at: [diane.freeman@wham-art.org](mailto:diane.freeman@wham-art.org)



Time to renew your membership. Forms on the website. Still only \$40.00 yearly. Please send in as soon as possible.

---



*Artist of the Month-September*

*1<sup>st</sup> Place - Julie Frye*

*2<sup>nd</sup> Place - Lois Miller*



At the time of the Newsletter there was no information.

Stay tuned for important updates.

Dr. Carl

PAG Rep.

**OFFICERS FOR 2020-2021**

President	Grant Washburn
1 <sup>st</sup> Vice President (Program)	Pat Washburn
2 <sup>nd</sup> Vice President (Exhibits)	Cindy Chambers
Treasurer	Paula Sandera
Recording Secretary	Jo Allebach
Corresponding Secretary	Sheila Bellinger

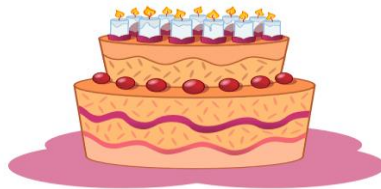


**October Collection – non-perishable canned or boxed (no glass) food.**

**Ongoing – Used eyeglasses for the Lions Club**

+++++

^^^



**BIRTHDAYS – October**

**Nancy Donovan**

**Alika Kumar**

**Victoria Lansing**

**Gary Merrill**

**Beth Ann Whiting**

# Artist Information

**WHAM Art Exhibit** will be December 1 – 30, 2020 – Entry form is on the Website and you can pick them up at the October General Meeting.

Drop Off: Tuesday, December 1, 10am – noon

Pick up: Wednesday, Dec 30, 10am – noon

Reception: Saturday, December 5, 2020 – 5pm-7pm We will be following the CDC guidelines.

Masks will be required. There will be individual drinks and individually wrap light snacks.



Members are asked for the October meeting to bring in art works with a “Trees” theme.



**50/50 raffle will be at the January meeting. So, there is time to buy your raffle tickets.**

**Ways and Means will be raffling off a couple of special items at the next 2 general meetings. Come and find out.**



**Please remember to bring your art work for Artist of the Month.**



**For just \$25.00 a year!!!**

**This includes one additional mid-year image exchange! Then you can change-out again. dues – how easy is THAT?!**

**Include it in your annual membership**

**We are increasing traffic flow and visitors to our site and piquing their interests WHEN THEY GET THERE!**

**Julie Frye is now your webmaster, (Chuck and Alika Kumar assisting) so get YOUR LINK on the PAG website and get these advantages WORKING for YOU!**

**Just send the following info. to Julie Frye, [juliefrye381@gmail.com](mailto:juliefrye381@gmail.com), or me- ([chuckc1@cox.net](mailto:chuckc1@cox.net))**

- **A JPG (as least 300dpi) of one of your pieces**
- **The title of the piece**
- **unframed sizes, media**
- **Your name, email address, website link, (remember-link it back to PAG site, to increase traffic)**
- **organizations to which you belong.**
- 

## **CHUCK'S COMPUTER CORNER "TIPS":**

### **BEWARE the "Unsubscribe" Scams!**

Unfortunately, malicious cyber thieves have long used what appears to be a legitimate message with an unsubscribe option, to perpetrate a variety of scams and attacks.

Do you know/trust the organization? If so, then the unsubscribe option should be safe; if not – (if you've never heard of the company and you never subscribed in the first place), then clicking on the unsubscribe button can be risky!

In the past, the unsubscribe button was simply used by spammers to get you to validate your email address, so they could sell it to other spammers. It validates that your address is in active use. But it also shows the spammers that you opened the message and read it. When an unsubscribe button leads to a website, the scammers can gather additional info such as your general location, which browser you are using, and whether you are running Windows or the MacOS. This can then help them determine the best way to try additional exploits based on the software you are using for email, your browser choice, and your operating system.

Most scam websites will likely attempt to place a tracking cookie on your computer, which allows them to identify you when you visit any of their websites. Today's scammers and cyber thieves are very sophisticated and tend to use the blended attacks, which means they just don't try one thing. One of the most dangerous things that can happen if you click on a rigged unsubscribe button is that the rigged website can attempt to exploit known vulnerabilities that you may not know patched.

Keeping in mind that they can easily know which operating system and browser you're using can be customized to your specific setup. It can't be stressed enough – keep EVERYTHING updated - especially your browsers and operating system.

You can use the Spam Option, bypassing the unsubscribe button and marking the message as SPAM in your email program, which causes future messages from that specific sender to be placed in your JUNK folder, helping spam tracking systems help everyone else. But DON'T use the Spam Option for messages from a company you do business with, if you care about them – it can negatively impact them.

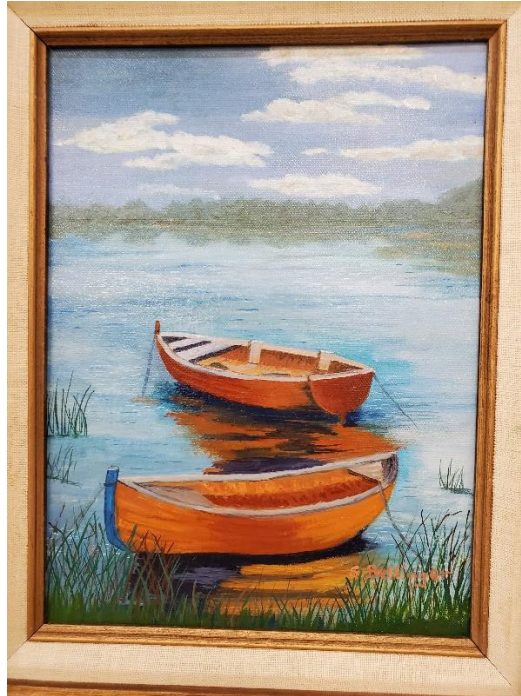
When in doubt - spam it out!

*Chuck Cummins - [Chuckc1@cox.net](mailto:Chuckc1@cox.net)*

BACK

PAGE

ART



“Waiting...” Oil painting, by Sheila Bellinger



**Arizona Art Supply**  
The largest Fine Art Supply Retailer in the Southwest  
Serving Arizona Artists for over 65 years.

**Is a proud supporter of Phoenix Artists Guild.  
PAG Members Receive 20% Off All Non-Sale Items!**

**[www.arizonaartsupply.com](http://www.arizonaartsupply.com)**  
**Phoenix—Tempe—Scottsdale—Sun City—Tucson**

Meetings:

4<sup>th</sup> Monday of Month  
AAG Building  
18411 N. 7<sup>th</sup> Avenue, Phoenix

Contacts:

Grant Washburn - President  
Alika Kumar – Membership

Membership \$40.00 per year/May-April