



# Phoenix Artists Guild

Volume 154

October, 2024



## PRESIDENT'S MESSAGE – October 2024

Hello to All,

October starts the beginning of the holiday season.

Lots of patience will be needed as we enter this busy time of year.

I have seen this information several times and thought I would share it with all of you.



Please remember to enter the Wham Exhibit. Entry fees are essential to the organization.

Hope to see you all at the October meeting.

Cindy Chambers  
PAG President

## Members Activities:

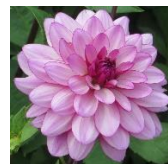


**OCTOBER** – Celebrate

Gratitude!

Use a palette of White-Ultraviolet-Blood orange-Marigold – Clay to create this month.

Suggestions: Food, Fruit, Warm, Bright, Contrast



**NOVEMBER** – Use the color palette of Light Pink, Blush, Raspberry, Dark Brown and Steel Blue to create an art piece of your choice. Topics – Flowers, nature, or spring.



## Creative Corner

### “The Unifying Effect of Light” By Julie Frye

As we all know, light is one of the three requisite factors in seeing. The other two are the object you are looking at, and your position in space. (More particularly, the position of your eyes in space.) We become focused on the object we are looking at – be it an actual scene or still life or person – or a photo (or series of photos) and the light source is very commonly ignored. I have written a Creative Corner article on things to look out for when Plein Aire painting, and probably one or two on painting from photographs. But perhaps we could learn something with a few ideas on the unifying effect of light in our paintings.

**OUTDOOR LIGHT:** Let’s look at the “character of light” outdoors. The yellow color of direct sunlight influences the light side of all objects, and where the blue in that part of the sky, which is away from the sun, influences the shadows. This is perhaps the most usual and commonplace aspect of outdoor light. Also don’t ignore reflected light that can be seen in dense forests, or sunsets, even cloudscapes. As an example, you can expect to find the wall of a canyon which is in shadow to be lighter than the cast shadow seen on the lighted canyon wall. Here, the sunlight bounces off the lighted wall and lights the shadowed wall on the other side.

**INDOOR LIGHTING:** ideally, our painting space will have a good amount of north light which is the best for seeing and matching colors. Lucky me, I have two fluorescent fixtures directly over my easel – one has four COOL bulbs, the other has four WARM bulbs. This combination creates the closest similarity to north light. In incandescent light, the shadows look warm – (the opposite of outdoor light which has warm lights and cool shadows.)

**TWILIGHT:** Here we are back to an outdoor situation after sunset. The cool soft light in which the land is bathed contrasts sharply with the campfires or other sources of light devised by man. Using this kind of light creates an air of mystery, intrigue, serenity., even drama. Romantic and sentimental moods can be recorded by using warm darks to contrast with the cool hues.

It is helpful if you observe for yourself the different times of day and the temperature of the light at different times. Write down your observations and times, noting whether the light is warm or cool, if there is reflected light, what color do you see in cast shadows, do I see cool colors in the distance? All those things carefully noted can be referred back to at your easel OR in a Plein Aire situation.

I MAY BE PREACHING TO THE CHOIR WHEN I SAY DO A VALUE SKETCH – or three – or FIVE! You won’t regret it!

## October Demonstrator – Trevor Swanson



Trevor began his professional career at the remarkable age of 20 and was quickly recognized for his artistic prowess. Within a few years, his paintings were hanging in some of the world's most prestigious art shows, museums and private collections. By the age of 25, he had won several artistic competitions, including the coveted "Artist of the Year" award from the Foundation for North American Wild Sheep. As a result of his exceptional talent, Trevor's reputation has soared to an early prominence in the world of fine art.

Trevor's paintings also reflect his pervasive philosophy on mankind's place within nature. "I see humans as the caretakers of our planet," explains Trevor. "It is our obligation to preserve the Earth's delicate balance for future generations. And the first step is opening our eyes to all its mystery and wonder. There is so much beauty in the world as it is, mine is the task of capturing that beauty to show others what we have to lose." Meticulous and masterful, Trevor Swanson is already an important force within the world of wildlife art. Motivated by his enduring passion, Trevor will continue to pursue his artistic gift, painting the sensational images of nature that touch our hearts, and stay in our mind's eye forever. "I love to lose myself in the rich color and vivid detail of my own brush strokes and discover only later where it has taken me. It gets more exciting all the time. I also love to see the response people have to my work. While sometimes nerve-wracking, it is always deeply rewarding to see how much someone enjoys a painting that I have put my heart into."

Trevor Swanson makes his home in Phoenix, Arizona with his family.

### Meeting Agenda

Monday, October 28, 2024  
6 – 6:45pm – Critique by Elaine Waters  
6:45 – 7:15pm – Business Meeting  
7:15 – 7:30pm – Social Time  
7:30 – 8:30pm – Demonstration Featuring Trevor Swanson



### Artist of the Month:

1<sup>st</sup> – Tim Morrison

2<sup>nd</sup> – Tonnie McBroom

Remember to only enter 1 piece of artwork each month. Also, once you have won, you can't enter another monthly competition during the current year. You are eligible for Artist of the Year, held at the May general meeting.

August – Lois Miller

+++++

### October Birthdays



Nancy Donovan Victoria Lansing



ARIZONA ART ALLIANCE REPORT – Grant Washburn PAG Rep.

*Congrats!*

Congratulations to Julie Frye – she sold a painting at the Olney Gallery!

# Artist Opportunities

A list of artist opportunities. You can go to their websites for additional information.

Artlink.com	phoenix.gov/arts
Azarts.gov/opportunities	scottsdalepublicart.org
Az Art Alliance website	shemerartcenter.org
Herbergertheater.org	

---



There will be a raffle for a Deluxe art box. Included in the wooden box is, oil pastels, sketch and colored pencils, watercolors, paint brushes, etc. Tickets will be a dollar per ticket, 5 tickets for \$6.00.

**Ways and Means** will be having a signup sheet if you would like to set up a table to sell art at the General Meetings. The cost will be \$5.00 or 10% of your sales. You must man your table and collect your own money. Julie will have her new Christmas cards and other things available at the September meeting.



Membership forms will be at each of the General meetings and on our website. Annual fees are \$50.00.



Please **remember** to submit your artwork for Back Page art.  
Send to Cindy Chambers at: [tees2others@gmail.com](mailto:tees2others@gmail.com)

**Remember** also to submit your artwork for Members Monthly Activity and Artist of the Month.

## Upcoming Event:

### WHAM EXHIBIT

EXHIBIT DATES: Friday, November 1, 2024-Saturday, November 30, 2024

RECEPTION: Saturday, November 2, 2024 – 4-6p

DROPOFF: Friday, November 1, 2024 – 10-11am

PICKUP: Saturday, November 30, 2024 – 10-11am

OPEN HOURS: Tuesday – Saturday, 10am – 4pm, closed Monday, Sunday and Holidays

---



Outreach will be collecting canned Pasta's any variety this month for Valley View Food Bank. Old glasses will also be collected.



**For just \$25.00 a year!!!**

**This includes one additional mid-year image exchange!** Then you can change-out again.  
**Include it in your annual membership dues** – how easy is THAT?!

We are increasing traffic flow and visitors to our site and piquing their interests WHEN THEY GET THERE!

Julie Frye is now your webmaster, (Chuck and Alike Kumar assisting) so get YOUR LINK on the PAG website and get these advantages WORKING for YOU!

Just send the following info. to Julie Frye, [juliefrye381@gmail.com](mailto:juliefrye381@gmail.com)), A JPG (as least 300dpi) of one of your pieces

- The title of the piece
  - unframed sizes, media
  - Your name, email address, website link, (remember-link it back to PAG site, to increase traffic)
- Organizations to which you belong.

**Computer Corner**





## **Healthcare Hijinks**

In this scam, cybercriminals are tricking workers into stealing their user credentials. Then, they use those credentials to redirect money from medical insurance payments into their own bank accounts. Healthcare organizations are frequent targets for cybercriminals because they have access to large amounts of data and personal information,

In some cases, the hackers gain access to a user's email account by stealing their credentials through phishing emails. At other times, they call the organization's IT help desk and use social engineering to pretend to be an employee who needs help with accessing their account. Then, they can reset the password and gain access to an organization's financial systems. Once they have accessed the system, they can reroute insurance payments into their own bank accounts.

**Follow these tips to avoid falling victim to a social engineering scam:**

- . Enable multi-factor authentication (MFA) for your accounts. This extra layer of security will make your accounts more difficult to access if your user credentials are stolen.**
- . Be cautious of unexpected emails. Do not click on links or provide personal information without verifying that the email is legitimate.**

This particular scam targets the healthcare industry, **BUT REMEMBER** that similar tactics could be used to target any organization. Any unexpected phone calls or emails should be treated with caution.

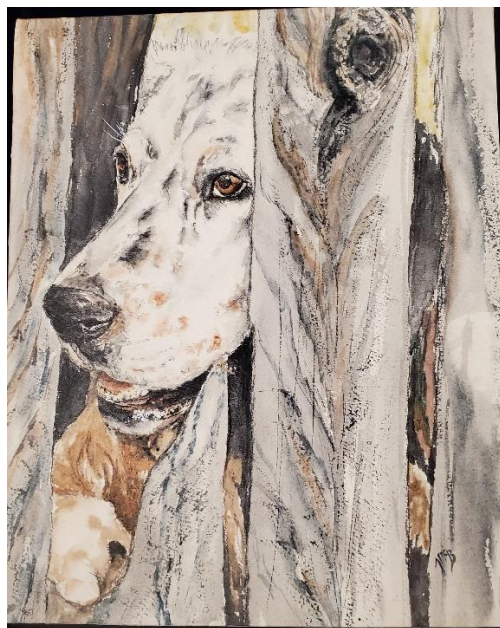
### **OFFICERS FOR 2023-2024**

<b>President</b>	<b>Cindy Chambers</b>
<b>1<sup>st</sup> Vice President (Program)</b>	<b>Julie Frye</b>
<b>2<sup>nd</sup> Vice President (Exhibits)</b>	<b>Nancy Donovan</b>
<b>Treasurer</b>	<b>Paula Sandera</b>
<b>Recording Secretary</b>	<b>Jo Allebach</b>
<b>Corresponding Secretary</b>	<b>Sheila Bellinger</b>

BACK

PAGE

ART



**“Hello Neighbor” Watercolor By Tonnie McBroom**



**Arizona Art Supply**  
The largest Fine Art Supply Retailer in the Southwest  
Serving Arizona Artists for over 65 years.

**Is a proud supporter of Phoenix Artists Guild.**  
**PAG Members Receive 20% Off All Non-Sale Items!**  
**[www.arizonaartsupply.com](http://www.arizonaartsupply.com)**  
**Phoenix—Tempe—Scottsdale—Sun City—Tucson**

**Meetings:**

4<sup>th</sup> Monday of Month  
AAG Building  
18411 N. 7<sup>th</sup> Avenue, Phoenix

**Contacts:**

Cindy Chambers - President  
Pat Washburn – Membership

Membership \$50.00 per year/May-April