



# Phoenix Artists Guild

Volume 167

February 2026



## PRESIDENT'S MESSAGE – February 2026

I want to thank Lynne for leading the new group critique. Also, thanks to all the members that took part in the critique. I received many favorable reports that the new method worked well and was well received.

Please remember to bring your art works for the critique, members activities and artist of the month.

We lost a charter member of Phoenix Artist Guild in January, Dan Gellenbeck.



January 11, 1930 – January 4, 2026

A celebration of Dan's life will be held on April 18, 2026. Keep his family in your thoughts.

Remember an easy way to help PAG is to participate in the 50/50 raffle. Tickets are \$1.00 a piece or 6 for \$5.00.

Pickup for the St. John the Baptist exhibit is Friday, March 6, 2026, 10-11am.

Welcome to our new members, Sam Sargent and Alton Johnston.

Cindy Chambers  
PAG President



## Creative Corner

### **Critiquing Art.... How Important is Liking a Painting? By Elaine Waters**

I am so glad that PAG members now have more responsibility in the matter of critiquing member's art, because NOW.... YOU will think more carefully in critiquing YOUR OWN ART.

So, what are you looking for in critiquing problems?

Use suggestion sheets from other artists who have been critiquing for a long time.

Look at the composition. Is it balanced and is the center of interest (and even more specifically, the Focal Point) in a good place?

Are there good value contrasts in the painting.... Or is the artist depending on splashy color only to grab the viewer's attention?

Does the subject fill the right amount on the canvas or paper?

If the painting is a floral.... Or one flower.... Please do not have the center of the flower at the center of the canvas. I see this too many times and the petals of the flower go off the canvas on ALL sides. This is NOT a good plan.

Are there little spots of color or value contrast in the outer background areas of the center of interest which pulls the attention of the viewer away from the subject?

Are perspective issues handled correctly?

Is there only one light source, or has the artist been careless and changed the light source in the painting? Are the shadows appropriate for the subject?

There are other things the "critique" should think about for judging others and your own art.

## February Demonstrator – Bruce Marion –



### Contemporary Impressionist

Whether you're viewing Bruce Marion's compelling abstracted landscapes, cityscapes, figurative or contemporary wildlife, it's likely his rich colorations and dramatic use of light first catch your eye. His works have a distinctive, glowing quality, as if they're illuminated from within. He achieves this effect by applying multiple layers of paint, using palette knives, brushes, and some unconventional tools (think drywall scrapers and squirt bottles), creating complex surfaces with tremendous depth.

His goal is an expression of feelings and sensations that the viewer can readily share. As Marion explains:

"Artwork touches us on a personal, primitive level- this is why people are so passionate about art. When a piece resonates with you, you feel it in your soul, and it changes you with every viewing. Many people think of art as something to look at, but it's so much more than that. It's really a very interactive, and experiential, medium."

With his wildlife series, the experience goes even deeper:

"Yes, their playful surfaces evoke a very modern feel, but I also try to capture that sense of history with each animal; these are magnificent beasts, with a strength and presence, with a lineage, that stretches so far beyond us - it's both admirable and humbling."

Classically trained, Marion received his BFA in 1978 from the prestigious Art Center College of Design in Pasadena, where he studied with world-renowned artist Pat Nagel, and Lorser Feitelson, the father of Post-Surrealism. He taught at the Otis Parsons Institute of Art in Los Angeles, before moving to Arizona in 2000. His passion to keep art alive in the next generation has led to several grants to implement month-long art programs for Arizona elementary schools. He teaches his two-day workshops, "Breakthrough!" and "Quantum Leap," to aspiring artists across the United States, and has recently taken his teachings overseas. In 2015, he and his wife Lee led a two-week art workshop tour of Greece, followed by another workshop tour of Italy in 2016. He was awarded a major public commission for Sam Houston State University; the ten large works now reside in the new Social Sciences and Humanities building at the Texas college. His streaming online video painting lessons are available at [www.BruceOnArt.com](http://www.BruceOnArt.com).

## Meeting Agenda

**Monday, February 23, 2026**

6 – 6:45pm – Group Critique

6:45 – 7:15pm – Business Meeting

7:15 – 7:30pm – Social Time

7:30 – 8:30pm – Demonstration – Bruce Marion

### **OFFICERS FOR 2025-2026**

President	Cindy Chambers
1 <sup>st</sup> Vice President (Program)	Lois Miller
2 <sup>nd</sup> Vice President (Exhibits)	Nancy Donovan
Treasurer	Tim Morrison
Recording Secretary	Tonnie McBroom
Corresponding Secretary	Sheila Bellinger



### Artist of the Month:

1<sup>st</sup>: Tonnie McBroom

2<sup>nd</sup>: Pat Washburn

Remember to only enter 1 piece of artwork each month. Also, once you have won, you can't enter another monthly competition during the current year. You are eligible for Artist of the Year, held at the May general meeting.

August – Mary Groves, September – Gary Merrill, October – Dean Grissom, November – Lois Miller, January – Tonnie McBroom

+++++

## **February Birthdays**



**February – Sheila Bellinger and Dorothy Huber**



Grant Washburn, Art Alliance Representative

---



**Ways and Means** please remember to buy your 50/50 raffle tickets at the general meetings.

**Members' Activities:**



**February 2026: "Love in All Forms"**

Theme: Not just romance — explore affection, compassion, and connection.

- Prompt Ideas: Parent-child, friendship, self-love, love of nature.
  - Bonus: Create a diptych (two-part artwork).
- 

**MARCH 2026: "Awakening"**

- Theme: As nature stirs, so can creativity — celebrate rebirth and emergence.
- Prompt Ideas: Blossoms, eggs, seedlings, birds, melting snow.

Bonus: Incorporate textures or mixed media.





Membership forms will be at each of the General meetings and on our website. Annual fees are \$50.00.



Please **remember** to submit your artwork for Back Page art.  
Send to Cindy Chambers at: [tees2others@gmail.com](mailto:tees2others@gmail.com)

**Remember** also to submit your artwork for Members Monthly Activity and Artist of the Month.



## OUTREACH

Top 9 items food banks need **MOST**:

Peanut Butter, Canned Proteins, Canned Beans, Pasta and Pasta Sauces, Pantry Staples (flour, sugar), Canned Vegetables, Cooking essentials, Baby Formula and Baby Food





For just \$25.00 a year!!!

**This includes one additional mid-year image exchange!** Then you can change-out again. **Include it in your annual membership dues** – how easy is THAT?!

We are increasing traffic flow and visitors to our site and piquing their interests WHEN THEY GET THERE!

Julie Frye is now your webmaster, (Chuck and Alika Kumar assisting) so get YOUR LINK on the PAG website and get these advantages WORKING for YOU!

Just send the following info. to Julie Frye, [juliefrye381@gmail.com](mailto:juliefrye381@gmail.com), A JPG (as least 300dpi) of one of your pieces

- The title of the piece
- unframed sizes, media
- Your name, email address, website link, (remember-link it back to PAG site, to increase traffic) Organizations to which you belong.

## Computer Corner



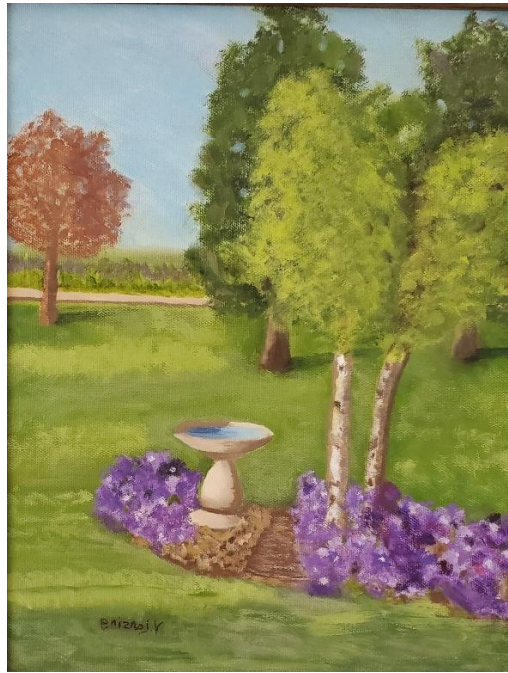
### HOW TO SPOT A COMPUTER SCAM:

- **Unsolicited communication:** If you receive an email, phone call, or text message from someone you don't know, be cautious. Legitimate organizations generally don't contact individuals out of the blue.
- 
- **Urgency:** Scammers often create a sense of urgency to pressure victims into acting quickly. This could involve threats of account suspension, legal action, or other dire consequences.
- 
- **Suspicious links or attachments:** Always check the URL before clicking on any link. Scammers often use URL's that closely resemble legitimate websites but have slight variations.
- 
- **Spelling and grammar mistakes:** Many scam emails contain poor grammar, spelling mistakes, or unusual phrasing.
- 
- **Requests for personal information:** Be wary of any communication that ask for sensitive information, like passwords, social security numbers or bank details.

BACK

PAGE

ART



“Birds Come to Rest” Oil by Victoria Lansing



**Arizona Art Supply**  
The largest Fine Art Supply Retailer in the Southwest  
Serving Arizona Artists for over 65 years.

**Is a proud supporter of Phoenix Artists Guild.**  
**PAG Members Receive 20% Off All Non-Sale Items!**  
**[www.arizonaartsupply.com](http://www.arizonaartsupply.com)**  
**Phoenix—Tempe—Scottsdale—Sun City—Tucson**

Meetings:

4<sup>th</sup> Monday of Month  
AAG Building  
18411 N. 7<sup>th</sup> Avenue, Phoenix

Contacts:

Cindy Chambers - President  
Pat Washburn – Membership

Membership \$50.00 per year/May-April