

CE Stock Colors

We have over **150** stock ink colors! **When placing an order please reference a stock color or PMS match.**

These swatches can be viewed on your monitor for an **approximate** representation of the color. If you have a Pantone color you'd like to use, we can try to match it to one of our closest stock colors or we can match a specific Pantone color for a PMS Mixing Fee.

We use plastisol inks which are the best for specific Pantone colors, because the ink sits on the surface of the garment. Water-based inks and discharge inks have less accuracy, because the ink reacts with the garment color.

Pantone Matching

When you need a specific Pantone color, we use the formula provided by Pantone to mix the color as accurately as possible. There are some acceptable variations of accuracy for mixing Pantone colors, but we do try to match it closest to the actual swatch in the Pantone book.

There is no substitution for the accuracy of the Pantone book. **Viewing color on a computer screen, phone, tablet, etc. will not give you an accurate representation of the finished product.** Other factors, like viewing angle, type of lighting, and background color will affect how the color looks. Here is an example of how ink looks in different light:



Natural Light



Fluorescent Light

For the closest representation, we suggest to lay the Pantone swatch from the book onto the garment background and view it in natural lighting.

CMYK

These are the colors used for process jobs (4-Color Process and 6-Color Process), and are not available for spot colors. Please choose from the ink colors on the following pages.



Cyan



Magenta



Yellow



Black

*** Proof & Production Disclaimer ***

The digital proof is our production team's blueprint for printing your job. Please compare your artwork with the art on the proof. While we are diligent in making sure your art meets your vision as closely as possible, small details could get lost when converting to print ready art due to formatting, locked layers, clipping masks, gradients, etc.

ACTUAL COLORS MAY VARY SLIGHTLY FROM ON SCREEN REPRESENTATION.

Please go by a PANTONE SOLID COATED COLOR GUIDE for better representation of color.

Due to circumstances and variables beyond our control, we cannot guarantee an exact Pantone color match. The allowance for PMS color matching is a shade or tone up or down from the intended color.

When creating gradients in the screen print process we use halftones



PROOF IS NOT TO SCALE. IT IS INTENDED TO SHOW THE APPROXIMATE PLACEMENT ON THE GARMENT
Please go by a ruler for accurate representation of print size. Template sized approximately for Unisex Small
Unless otherwise specified, these placements will be printed in our **STANDARD PLACEMENTS**

Customer is responsible for garment and ink color(s) selection and holds all responsibility for the overall look and combination of the two

Two ply (items with two layers) are only able to be printed with one color and with one print stroke. There is a great margin for error. Prints can have smudging, fading, and imperfections. Prints will most likely differ from piece to piece. Customer holds all responsibility for misprints on these types of garments.

Understanding Your Garment and Print Quality

When ink is applied to different garment colors and fabrics the end result of the print appearance and feel will vary. The print can change from a matte or glossy, a smooth to a textured finish, and have a thinner or heavier ink deposit.

Small lines and details may not be legible, because ink may potentially fill in or drop out due to the nature of the printing process.



Thick textured print



Matte vs Glossy / orange color appears different



Loss of detail due to holes



Distressed / faded



Small text and thin outlines closing in



Pantone match cannot be exact



Halftones/colors appear different



After final artwork approval and receipt of ALL stock a minimum of 3 days is required to complete your order

By approving the proof, you are acknowledging that you have read and understood this information.

REDS



Rust Red
PMS 1815 C



Scarlet
PMS 186 C



Deep Red
PMS 200 C



Cardinal
PMS 201 C



Maroon
PMS 504 C



Garnet
PMS 7421 C



Atomic Orange
PMS 485 C



H Medium Red
PMS 185 C



H Warmer Red
PMS 179 C



H Rust Red
PMS 7524 C



H SF Red
PMS 187 C



H Team Red
PMS 188 C



H Ohio Red
PMS 193 C



H Maroon
PMS 202 C



H Warm Red
PMS 1795 C



H Crimson
PMS 4060 C



H Deep Red
PMS 7621 C

ORANGES



Bright Orange
PMS 021 C



Texas Orange
PMS 1525 C



Light Orange
PMS 158 C



Orange
PMS 1645 C



Peach
PMS 2023 C



Coral
PMS 2348 C



H Tenn Orange
PMS 151 C



H Tangerine
PMS 157 C



H Medium Orange
PMS 1495C



H Bright Orange
PMS 1585 C

YELLOWS



Daisy
PMS Yellow C



Lemon Yellow
PMS 107 C



Light Lemon
PMS 113 C



Rich Yellow
PMS 115 C



Banana Yellow
PMS 1205 C



Medium Yellow
PMS 123 C



Deep Yellow
PMS 1245 C



Light Gold
PMS 137 C



Gold
PMS 1375 C



ELT Light Gold
PMS 2010 C



Old Gold
PMS 2313 C



Vegas Gold
PMS 4515 C



Huskies Gold
PMS 7502 C



True Gold
PMS 7549 C



H Gold
PMS 110 C



H KC Gold
PMS 7562 C



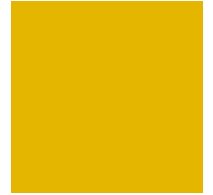
H WV Gold
PMS 124 C



H Team Gold
PMS 130 C



H Medium Yellow
PMS 143 C



H Yellow Gold
PMS 4017 C



H Vegas Gold
PMS 4525 C



H Light Yellow
PMS 7499 C

GREENS



CE Lime Green
PMS 2257 C



Lime Green
PMS 2285 C



Nuka Lime
PMS 2286 C



Jade Green
PMS 2400 C



Seafoam
PMS 333 C



Shamrock
PMS 3415 C



Forest Green
PMS 3425 C



Dark Green
PMS 3435 C



Mint Green
PMS 345 C



Green
PMS 356 C



Apple Green
PMS 360 C



Olive Green
PMS 370 C



Five Stones Green
PMS 371 C



Aquamarine
PMS 7711 C



Dark Teal
PMS 7718 C



H Medium Green
PMS 368 C



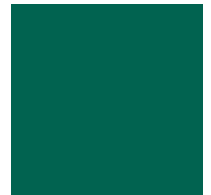
H Bright Green
PMS 7488 C



H Green
PMS 376 C



H Dark Green
PMS 348 C



H Evergreen
PMS 336 C



H Emerald
PMS 335 C



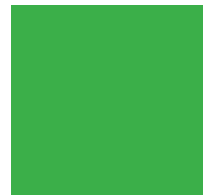
H Hunter
PMS 349 C



H Green
PMS 355 C



H Light Green
PMS 358 C



H Electric Green
PMS 361 C



H Grass Green
PMS 369 C



H Pine
PMS 626 C



H Lime Green
PMS 2300 C



H Sea Green
PMS 5545C

BLUES



Light Blue
PMS 2141 C



University Blue
PMS 2142 C



Dark Sapphire
PMS 2144 C



Metro Blue
PMS 2145 C



Academy Blue
PMS 2147 C



Denim Blue
PMS 2154 C



Blue Wave
PMS 2170 C



Sapphire
PMS 2173 C



CE Brite Blue
PMS 2184 C



Medium Navy
PMS 2189 C



Peacock Blue
PMS 2227 C



Medium Blue
PMS 2728 C



Cobalt
PMS 281 C



Eldon Blue
PMS 284 C



Solar Blue
PMS 285 C



Medium Royal
PMS 288 C



Mild Blue
PMS 2925 C



Powder Blue
PMS 297 C



Sky Blue
PMS 298 C



Retro Blue
PMS 300 C



Light Navy
PMS 533 C



Light Sky Blue
PMS 566 C



Ramblin Blue
PMS 7470 C



Ocean Blue
PMS 7705 C



H Denim Blue
PMS 7691 C



H Light Blue Gray
PMS 5425 C



H Light Blue
PMS 2985 C



H Light Navy
PMS 2955 C



H Medium Blue
PMS 2935 C



H Dark Navy
PMS 2767 C



H Medium Navy
PMS 648 C



H Teal
PMS 631 C



H Medium Teal
PMS 320C



H Deep Blue
PMS 289 C



H Ultramarine
PMS 280 C



H Tufts Blue
PMS 279 C



H Midnight
PMS 282 C



H Royal Blue
PMS 286 C



H Royal Blue
PMS 293 C



H Bills Blue
PMS 287 C



H WV Navy
PMS 295 C



H Turquoise
PMS 306 C



H Light Teal
PMS 324 C



H Blue Gray
PMS 653 C



H Navy
PMS 2766 C



H Dark Blue
PMS 2945 C



H Sky Blue
PMS 2995 C

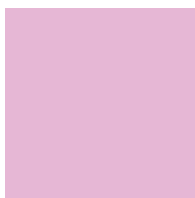
PINKS



Azalea Pink
PMS 223 C



Berry Pink
PMS 219 C



Cancer Pink
PMS 243 C



Medium Pink
PMS 240 C



Hot Pink
PMS Rhodamine Red C



Rubine Red C

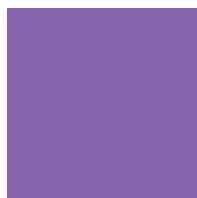
PURPLES



Groovy Purple
PMS 2095 C



Eggplant
PMS 2627 C



Lilac
PMS 265 C



Bright Purple
PMS 266 C



Purple
PMS 669 C



Lavender
PMS 7446 C



Grape
PMS 7671 C



Dark Purple
PMS 7672 C



H Purple
PMS 269 C

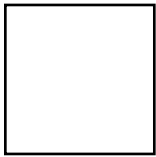


H Iris
PMS 2726 C



H Dark Purple
PMS 2735 C

NEUTRALS



White



Black



Battleship Gray
PMS Cool Gray 6 C



CE Dark Gray
PMS Cool Gray 11 C



Steel Gray
PMS 423 C



Iron Gray
PMS 447 C



Silver Gray
PMS 430 C



Flesh
PMS 481 C



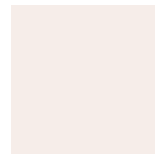
Sand
PMS 453 C



Khaki
PMS 4675 C



Beige
PMS 7506 C



H Off White
PMS 9285 C



H Silver Gray
PMS 427 C



H Oxford
PMS 4132 C



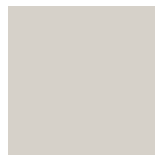
H Gray
PMS 7529 C



H Medium Gray
PMS 429 C



H Warm Gray
PMS 409 C



H Light Gray
PMS Warm Gray 1 C



H Charcoal
PMS Cool Gray 9 C



H Tan
PMS 728 C



H Light Sand
PMS 482 C

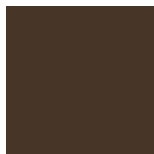


H Light Silver
PMS Cool Gray 1 C

BROWNS



Dark Brown
PMS 476 C



Cool Brown
PMS 7533 C



Derby Brown
PMS 725 C



Clay Brown
PMS 724 C



H Brown
PMS 448 C



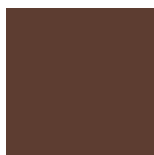
H Brick
PMS 484 C



H Mahogany
PMS 490 C



H Clay Brown
PMS 7526 C



H Dark Brown
PMS 7596 C

METALLICS AND NEONS



Neon Green
PMS 802 C



Neon Orange
PMS 804 C



H Neon Coral
PMS 805 C



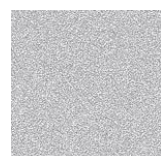
Neon Pink
PMS 806 C



Neon Yellow
PMS 809 C



Metallic Gold
PMS 180 C



Metallic Silver



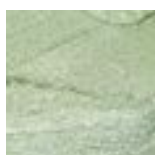
H Metallic Gold
PMS 871 C



H Metallic Gold
PMS 874 C



H Metallic Gold
PMS 8640 C



H Metallic Green
PMS 8341 C