

# CE Stock Colors

We have over **150** stock ink colors! **When placing an order please reference a stock color or PMS match.**

These swatches can be viewed on your monitor for an **approximate** representation of the color. If you have a Pantone color you'd like to use, we can try to match it to one of our closest stock colors or we can match a specific Pantone color for a PMS Mixing Fee.

We use plastisol inks which are the best for specific Pantone colors, because the ink sits on the surface of the garment. Water-based inks and discharge inks have less accuracy, because the ink reacts with the garment color.

## Pantone Matching

When you need a specific Pantone color, we use the formula provided by Pantone to mix the color as accurately as possible. There are some acceptable variations of accuracy for mixing Pantone colors, but we do try to match it closest to the actual swatch in the Pantone book.

There is no substitution for the accuracy of the Pantone book. **Viewing color on a computer screen, phone, tablet, etc. will not give you an accurate representation of the finished product.** Other factors, like viewing angle, type of lighting, and background color will affect how the color looks. Here is an example of how ink looks in different light:



Natural Light



Fluorescent Light

For the closest representation, we suggest to lay the Pantone swatch from the book onto the garment background and view it in natural lighting.

## CMYK

These are the colors used for process jobs (4-Color Process and 6-Color Process), and are not available for spot colors. Please choose from the ink colors on the following pages.



Cyan



Magenta



Yellow



Black

# \*\*\*Proof & Production Disclaimer\*\*\*

The digital proof is our production team's blueprint for printing your job. Please compare your artwork with the art on the proof. While we are diligent in making sure your art meets your vision as closely as possible, small details could get lost when converting to print ready art due to formatting, locked layers, clipping masks, gradients, etc.

**ACTUAL COLORS MAY VARY SLIGHTLY FROM ON SCREEN REPRESENTATION.**

Please go by a PANTONE SOLID COATED COLOR GUIDE for better representation of color.

Due to circumstances and variables beyond our control, we cannot guarantee an exact Pantone color match. The allowance for PMS color matching is a shade or tone up or down from the intended color.

When creating gradients in the screen print process we use halftones



**PROOF IS NOT TO SCALE. IT IS INTENDED TO SHOW THE APPROXIMATE PLACEMENT ON THE GARMENT**  
Please go by a ruler for accurate representation of print size. Template sized approximately for Unisex Small  
Unless otherwise specified, these placements will be printed in our **STANDARD PLACEMENTS**

Customer is responsible for garment and ink color(s) selection and holds all responsibility for the overall look and combination of the two

Two ply (items with two layers) are only able to be printed with one color and with one print stroke. There is a great margin for error. Prints can have smudging, fading, and imperfections. Prints will most likely differ from piece to piece. Customer holds all responsibility for misprints on these types of garments.

## Understanding Your Garment and Print Quality

When ink is applied to different garment colors and fabrics the end result of the print appearance and feel will vary. The print can change from a matte or glossy, a smooth to a textured finish, and have a thinner or heavier ink deposit.

Small lines and details may not be legible, because ink may potentially fill in or drop out due to the nature of the printing process.



Thick textured print



Matte vs Glossy / orange color appears different



Loss of detail due to holes



Distressed / faded



Small text and thin outlines closing in



Pantone match cannot be exact



Halftones/colors appear different



After final artwork approval and receipt of ALL stock a minimum of 3 days is required to complete your order

**By approving the proof, you are acknowledging that you have read and understood this information.**

## REDS



Rust Red  
PMS 1815 C



Scarlet  
PMS 186 C



Deep Red  
PMS 200 C



Cardinal  
PMS 201 C



Maroon  
PMS 504 C



Garnet  
PMS 7421 C



Atomic Orange  
PMS 485 C



H Medium Red  
PMS 185 C



H Warmer Red  
PMS 179 C



H Rust Red  
PMS 7524 C



H SF Red  
PMS 187 C



H Team Red  
PMS 188 C



H Ohio Red  
PMS 193 C



H Maroon  
PMS 202 C



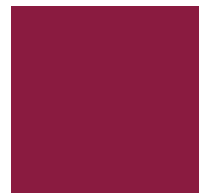
H Warm Red  
PMS 1795 C



H Crimson  
PMS 4060 C



H Deep Red  
PMS 7621 C



H Team Maroon  
PMS 208 C

## ORANGES



Bright Orange  
PMS 021 C



Texas Orange  
PMS 1525 C



Light Orange  
PMS 158 C



Orange  
PMS 1645 C



Peach  
PMS 2023 C



Coral  
PMS 2348 C



H Tenn Orange  
PMS 151 C



H Tangerine  
PMS 157 C



H Medium Orange  
PMS 1495C



H Bright Orange  
PMS 1585 C



H Sun Orange  
PMS 135 C



H Team Orange  
PMS 165 C



H Deep Orange  
PMS 7597 C

## YELLOWS



Daisy  
PMS Yellow C



Lemon Yellow  
PMS 107 C



Light Lemon  
PMS 113 C



Rich Yellow  
PMS 115 C



Banana Yellow  
PMS 1205 C



Medium Yellow  
PMS 123 C



Deep Yellow  
PMS 1245 C



Light Gold  
PMS 137 C



Gold  
PMS 1375 C



ELT Light Gold  
PMS 2010 C



Old Gold  
PMS 2313 C



Vegas Gold  
PMS 4515 C



Huskies Gold  
PMS 7502 C



True Gold  
PMS 7549 C



H Gold  
PMS 110 C



H KC Gold  
PMS 7562 C



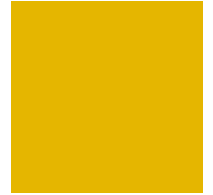
H WV Gold  
PMS 124 C



H Team Gold  
PMS 130 C



H Medium Yellow  
PMS 143 C



H Yellow Gold  
PMS 4017 C



H Vegas Gold  
PMS 4525 C



H Light Yellow  
PMS 7499 C



H Sport Yellow  
PMS 109 C



H Sport Gold  
PMS 116 C



H Athletic Gold  
PMS 1235 C



## GREENS



CE Lime Green  
PMS 2257 C



Lime Green  
PMS 2285 C



Nuka Lime  
PMS 2286 C



Jade Green  
PMS 2400 C



Seafoam  
PMS 333 C



Shamrock  
PMS 3415 C



Forest Green  
PMS 3425 C



Dark Green  
PMS 3435 C



Mint Green  
PMS 345 C



Green  
PMS 356 C



Apple Green  
PMS 360 C



Olive Green  
PMS 370 C



Five Stones Green  
PMS 371 C



Aquamarine  
PMS 7711 C



Dark Teal  
PMS 7718 C



H Medium Green  
PMS 368 C



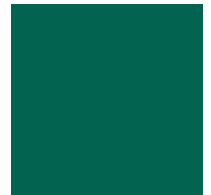
H Bright Green  
PMS 7488 C



H Green  
PMS 376 C



H Dark Green  
PMS 348 C



H Evergreen  
PMS 336 C



H Emerald  
PMS 335 C



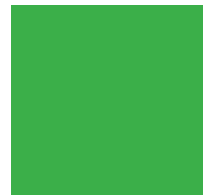
H Hunter  
PMS 349 C



H Green  
PMS 355 C



H Light Green  
PMS 358 C



H Electric Green  
PMS 361 C



H Grass Green  
PMS 369 C



H Pine  
PMS 626 C



H Lime Green  
PMS 2300 C



H Sea Green  
PMS 5545C

## BLUES



Light Blue  
PMS 2141 C



University Blue  
PMS 2142 C



Dark Sapphire  
PMS 2144 C



Metro Blue  
PMS 2145 C



Academy Blue  
PMS 2147 C



Denim Blue  
PMS 2154 C



Blue Wave  
PMS 2170 C



Sapphire  
PMS 2173 C



CE Brite Blue  
PMS 2184 C



Medium Navy  
PMS 2189 C



Peacock Blue  
PMS 2227 C



Medium Blue  
PMS 2728 C



Cobalt  
PMS 281 C



Eldon Blue  
PMS 284 C



Solar Blue  
PMS 285 C



Medium Royal  
PMS 288 C



Mild Blue  
PMS 2925 C



Powder Blue  
PMS 297 C



Sky Blue  
PMS 298 C



Retro Blue  
PMS 300 C



Light Navy  
PMS 533 C



Light Sky Blue  
PMS 566 C



Ramblin Blue  
PMS 7470 C



Ocean Blue  
PMS 7705 C



H Denim Blue  
PMS 7691 C



H Light Blue Gray  
PMS 5425 C



H Light Blue  
PMS 2985 C



H Light Navy  
PMS 2955 C



H Medium Blue  
PMS 2935 C



H Dark Navy  
PMS 2767 C



H Medium Navy  
PMS 648 C



H Teal  
PMS 631 C



H Medium Teal  
PMS 320 C



H Deep Blue  
PMS 289 C



H Ultramarine  
PMS 280 C



H Tufts Blue  
PMS 279 C



H Midnight  
PMS 282 C



H Royal Blue  
PMS 286 C



H Royal Blue  
PMS 293 C



H Bills Blue  
PMS 287 C



H WV Navy  
PMS 295 C



H Turquoise  
PMS 306 C



H Light Teal  
PMS 324 C



H Blue Gray  
PMS 653 C



H Navy  
PMS 2766 C

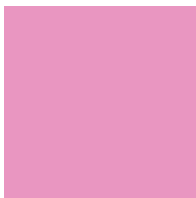


H Dark Blue  
PMS 2945 C



H Sky Blue  
PMS 2995 C

## PINKS



Azalea Pink  
PMS 223 C



Berry Pink  
PMS 219 C



Cancer Pink  
PMS 243 C



Medium Pink  
PMS 240 C



Hot Pink  
PMS Rhodamine Red C



Rubine Red C



H Pale Pink  
PMS 196 C



H Light Rose  
PMS 218 C

## PURPLES



Groovy Purple  
PMS 2095 C



Eggplant  
PMS 2627 C



Lilac  
PMS 265 C



Bright Purple  
PMS 266 C



Purple  
PMS 669 C



Lavender  
PMS 7446 C



Grape  
PMS 7671 C



Dark Purple  
PMS 7672 C



H Purple  
PMS 269 C

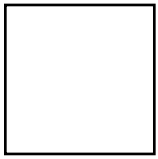


H Iris  
PMS 2726 C



H Dark Purple  
PMS 2735 C

## NEUTRALS



White



Black



Battleship Gray  
PMS Cool Gray 6 C



CE Dark Gray  
PMS Cool Gray 11 C



Steel Gray  
PMS 423 C



Iron Gray  
PMS 447 C



Silver Gray  
PMS 430 C



Flesh  
PMS 481 C



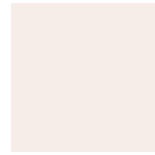
Sand  
PMS 453 C



Khaki  
PMS 4675 C



Beige  
PMS 7506 C



H Off White  
PMS 9285 C



H Silver Gray  
PMS 427 C



H Oxford  
PMS 4132 C



H Gray  
PMS 7529 C



H Medium Gray  
PMS 429 C



H Warm Gray  
PMS 409 C



H Light Gray  
PMS Warm Gray 1 C



H Charcoal  
PMS Cool Gray 9 C



H Tan  
PMS 728 C



H Light Sand  
PMS 482 C



H Light Silver  
PMS Cool Gray 1 C



H Tan Flesh  
PMS 480 C

## BROWNS



Dark Brown  
PMS 476 C



Cool Brown  
PMS 7533 C



Derby Brown  
PMS 725 C



Clay Brown  
PMS 724 C



H Brown  
PMS 448 C



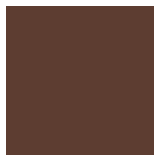
H Brick  
PMS 484 C



H Mahogany  
PMS 490 C



H Clay Brown  
PMS 7526 C



H Dark Brown  
PMS 7596 C

## METALLICS AND NEONS



Neon Green  
PMS 802 C



Neon Orange  
PMS 804 C



H Neon Coral  
PMS 805 C



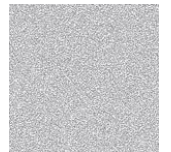
Neon Pink  
PMS 806 C



Neon Yellow  
PMS 809 C



Metallic Gold  
PMS 180 C



Metallic Silver



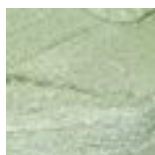
H Metallic Gold  
PMS 871 C



H Metallic Gold  
PMS 874 C



H Metallic Gold  
PMS 8640 C



H Metallic Green  
PMS 8341 C