



# REDEFINING WOMEN'S HEALTH



WHERE WOMEN'S HEALTH MEETS  
PERSONALIZED CARE



# Her WELLNESS



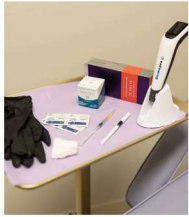


## Welcome to HER Wellness!

Our mission is to empower women through accessible, high-quality healthcare designed to fit seamlessly into their lives. We are a full service Gynecology clinic that provides personalized, compassionate care. We believe in supporting the whole person—addressing physical, mental, and emotional well-being. By leveraging innovative technology, we create a connected, holistic experience that enhances women’s health, wellness, and quality of life—anytime, anywhere.

---

# TABLE OF CONTENTS



PAGE 6

## AESTHETIC TREATMENTS

Each treatment is designed with intention—focusing not only on enhancing your natural beauty, but also on promoting skin health, confidence, and overall well-being.



PAGE 10

## SKINCARE PRODUCTS

We offer a wide range of affordable skin care products for our patients. We thoughtfully chose each brand to address the most common concerns our patients have.



PAGE 17

## SUPPLEMENTS

Each product we offer is third-party tested to ensure purity, potency, and accuracy—so you can trust that what’s on the label is exactly what you’re getting.



PAGE 19

## WEIGHT LOSS

Options include dosing for Semaglutide and Tirzepatide. Medications are available by prescription only after meeting with one of our providers.



PAGE 20

## IV THERAPY

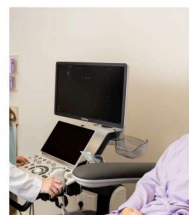
Need a boost? Whether getting over a recent illness or looking to improve mental clarity and feel younger, we’ve got you covered.



PAGE 23

## MENTAL HEALTH

We take a whole-person approach—including your mental health. See what Bridge Lee, PMHNP-BC has to offer as a compliment to our gynecologic services.



PAGE 24

## FERTILITY SERVICES

Explore our services and the benefit of Branch Care for fertility awareness, work-up, and support.

---

## **Women's Health**

Annual Wellness Exams | Menstrual Irregularities  
Preconception Counseling | Birth Control Counseling

## **Hormone Optimization**

Perimenopause | Menopause | Testosterone Therapy  
PCOS | Thyroid Optimization

## **Fertility & Preconception Care**

Evaluation | Ultrasound | IUI | Tubal Patency Testing  
In-Office Labs | PCOS Fertility Care  
Branch Care Collaboration

## **Weight & Metabolic Health**

Medical Weight Loss | GLP-1 Therapy  
Nutrition & Lifestyle Counseling

## **Aesthetics**

Microneedling | Botox & Fillers | PRP Hair Restoration  
Medical Grade Skincare | Acne Treatments

## **Mental Health**

Anxiety | Depression | ADHD | PMDD  
GeneSight testing | Sexual Trauma | Postpartum

# AESTHETICS

---

We offer aesthetic services within our women's health clinic to make self-care more convenient and seamless. By combining wellness and aesthetics in one trusted space, you can address your health and beauty goals in a single visit. It's a thoughtful, integrated approach designed to help you look and feel your best without the need to go elsewhere.



# MICRONEEDLING

We've designed our microneedling services to meet you exactly where you are, with options tailored to a wide range of skin concerns, goals, and comfort levels. Whether you're looking for a gentle refresh or a more advanced, results-driven treatment, we offer customizable approaches to ensure your care feels both effective and appropriate for your needs.

\$250



## RESTORE

Using Growth Factor solution, this level will boost collagen, smooth fine lines, and improve texture and tone

\$350



## REFRESH

Uses Growth Factor serum with the additional after-care kit for increased hydration, improved treatment outcomes, and reduced downtime

\$450



## REGENERATE

Designed to restore, repair, and regenerate aging skin, Biosomes™ leverage advanced engineering to provide a non-invasive and rejuvenating experience for optimal skincare benefits.

\$450



## ELITE GLOW PRP

Uses your own platelets and growth factors to boost collagen and target wrinkles and acne scars

Did you know? You can also microneedle stretch marks and other scarring!  
Customized packages available after consultation!

# BRIGHTENING

Have dull skin or an uneven complexion? Suffer from sun spots or melasma? Our skin brightening solutions may be a good fit for you.

\$50  
add-on



AnteAGE MD® Brightening Solution contains the same powerful rejuvenating growth factors and cytokines as our classic Growth Factor Solution with an added boost of Tranexamic Acid and other melanin synthesis blocking actives.

Use this solution with either the **RESTORE** or **REFRESH** microneedling sessions for \$50



\$146



## BRIGHTENER

The AnteAGE MD® Brightener contains powerful ingredients to reveal glowing, healthy skin. This unique Brightener smooths uneven skin tone and encourages a naturally brighter complexion. Tranexamic acid, engineered peptides, and growth factors combine to fade discoloration without drying or irritation. AnteAGE MD® Brightener can be used daily with any other AnteAGE MD® products and in conjunction with cosmetic treatments.

# NEUROTOXINS & FILLER

## LIP ENHANCEMENT WITH JUVÉDERM ULTRA XC

A smooth hyaluronic acid filler designed to add volume, shape, and hydration to the lips while maintaining a natural look and feel.

- ✓ Adds soft, natural volume
- ✓ Enhances lip shape and symmetry
- ✓ Smooths fine lines around the lips
- ✓ Hydrates for a more youthful appearance

\*Includes lidocaine dental block for added comfort

\$700/  
syringe



## CHEEK & UNDER-EYE REJUVENATION WITH RHA 4 TEOXANE

An advanced hyaluronic acid filler designed to restore volume in the cheeks and support the under-eye area for a smoother, more youthful appearance.

- ✓ Restores lost cheek volume
- ✓ Provides subtle lift and contour
- ✓ Softens under-eye hollows and lines
- ✓ Maintains natural movement and expression

\$700/  
syringe



## DAXXIFY

The first and only frown line treatment with a **peptide formulation**.

- ✓ Quicker onset of action, usually within 2 days
- ✓ Longer lasting results, some up to 6 months
- ✓ Leaves skin looking smoother, brighter, and more refined

\*Daxxify units are usually 2X more than what is used in traditional Botox injections

\$6/  
unit



---

# SKINCARE PRODUCTS

---

We carefully selected our skincare product lines to address the most common concerns we see among our patients—while keeping effectiveness, simplicity, and value top of mind. Each product is chosen for its proven results, ease of use, and ability to fit seamlessly into your daily routine without unnecessary complexity.



# AnteAGE<sup>®</sup>

Regenerative Science

\$212



## SERUM

The AnteAGE MD<sup>®</sup> Biosome<sup>™</sup> Serum restores and protects with a fast absorbing formula of concentrated Biosomes<sup>™</sup>, growth factors, antioxidants and peptides.

\$134



## ACCELERATOR

AnteAGE MD<sup>®</sup> Biosome<sup>™</sup> Accelerator is packed with powerful actives including Biosomes<sup>™</sup>, vitamins C and E, bakuchiol, a retinol alternative, and growth factors to activate repair at the cellular level.



**Purchase the Serum and Accelerator together for best results and 10% off!**

**Also available in 7 day travel size for \$50**

\$40



## CLEANSER

This gentle, foaming cleanser, enriched with essential fatty acids, anti-oxidants, anti-inflammatory botanicals and detoxifying actives will thoroughly cleanse all traces of impurities, excess oil and surface debris, while leaving the skin soft, soothed, hydrated and balanced.

# AnteAGE®

Regenerative Science

\$100



## EYE

Hydrates, reduce puffiness, brightens, and visibly smooths, while also reducing under eye discoloration

\$146



## BRIGHTENER

Contains comprehensive ingredients to brighten and reveal glowing, healthy skin. Tranexamic acid, engineered peptides, and growth factors combine with the addition of biomimetic exosomes to fade discoloration without drying or irritation.

\$120



## MOISTURIZER

AnteAGE® Moisturizer is designed to provide your skin with deep hydration, moisturization, and assist in repairing the skins protective barrier.

\$140



## VAGINAL REJUVENATION SYSTEM

A regenerative vaginal moisturizer. Harnessing the natural power of bone marrow stem cells, AnteAGE® VRS delivers lost bio-signals to restore a youthful micro-environment.



LED light therapy backed by 40+ studies helping you achieve healthier, more radiant skin.

\$395



## CONTOUR

- Reduces fine lines and wrinkles
- Promotes healthier, younger-looking skin
- Unveils a brighter, more radiant complexion

### HOW IT WORKS

Red and near-infrared wavelengths work on a cellular level to stimulate fibroblast activity, support collagen and elastin production, improve elasticity, and reduce the appearance of fine lines and wrinkles.

The red wavelength (633nm) supports cellular repair and circulation, promoting a more vibrant complexion. The near-infrared wavelength (830nm) penetrates deeper layers of the skin to support collagen and elastin production, resulting in plumper, firmer, more youthful looking skin.

**PRO-TIP: PAIR WITH HYALURONIC ACID DURING TREATMENT, FOLLOWED BY PEPTIDE CONCENTRATE POST-TREATMENT FOR SUPERIOR RESULTS**

\$395



## CLEAR

- Reduces active acne, redness, & inflammation
- Helps clear breakouts faster and soften the appearance of acne scarring
- Unveils a brighter, more radiant complexion

### HOW IT WORKS

Acne begins when the sebaceous glands produce excess oil. This oil combines with dead skin cells, clogging pores and contributing to breakouts. Certain skin bacteria, including *C. acnes*, produce natural chemicals called porphyrins, which are sensitive to the blue and red wavelengths used by Omnilux Clear.

The blue light (415nm) targets and neutralizes acne-causing bacteria on the skin's surface. Combined with red light (633nm), Omnilux Clear helps reduce active acne breakouts by supporting the skin's natural recovery process.

**PRO-TIP: PAIR WITH SALICYLIC ACID PRE-TREATMENT, NONI BALANCING SERUM DURING, AND SQUALANE JELLY MOISTURIZER POST-TREATMENT**



PRODUCTS TO COMPLIMENT YOUR LED LIGHT THERAPY DEVICE

\$95



## BLEMISH ERASER

Mini device with blue and red light therapy that targets both expected and surprise breakouts to help calm and clear the appearance of spots and blemishes.

\$95



## SKIN CORRECTOR

Mini device with red and near-infrared light therapy device with clinically proven results for anti-aging and skin rejuvenation.

\$95



## EYE BRIGHTENER

Mini device with red and near-infrared light therapy device with clinically proven results for anti-aging and skin rejuvenation.

Each mini device Includes 14 single-use Hydrocolloid Patches with specific ingredients designed to compliment the device. Refills of the patches are available at \$44 for a box of 20.



PRODUCTS TO COMPLIMENT YOUR LED LIGHT THERAPY DEVICE

\$51



### HYALURONIC ACID

Lock in moisture, soothe, and revive fatigued skin with this concentrated, deeply hydrating serum.

\$58



### PEPTIDE CONCENTRATE

Hydrate and smooth the look of fine lines and fatigued skin with our multi-peptide concentrate.

\$55



### CoQ10 FACE CREAM

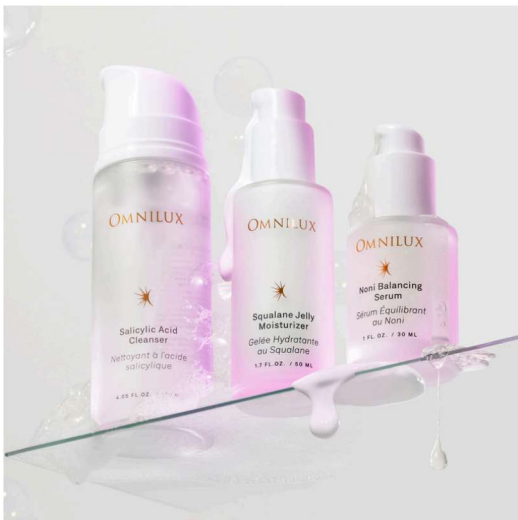
powerful antioxidant to help diminish visible signs of age

\$42



### ANTIOXIDANT EYE CREAM

Hydrate, smooth, and wake up the eye area with this nourishing, antioxidant-rich cream.



**Salicylic Acid Cleanser - PRE LED**  
Gently exfoliates to clean congested skin.

\$37

**Noni Balancing Serum - DURING LED**  
Hydrates and balances the skin

\$45

**Squalane Jelly Moisturizer - POST LED**  
Locks in moisture & soothes distressed skin.

\$48

Buy the bundle to use with your Clear Mask and receive 10% off

# (plated)<sup>®</sup>

Renewosome™ Technology: Scientific Breakthrough in Every Bottle of exosome therapy

\$258



## INTENSE

Intense Serum is clinically proven to:

- Reduce the look of fine lines and wrinkles.
- Even the appearance of dark spots and redness.
- Enhance luminosity and glow.
- Gentle for all skin types.

\$258



## DAILY

DAILY is the perfect follow-up for INTENSE. After 6-12 weeks of using INTENSE, consider transitioning to DAILY for ongoing skincare maintenance.

- Formulated for daily use
- Moisturizing formulation
- Ideal for all skin types

\$379



## HAIR

(plated)<sup>™</sup> HAIR Serum is a scientific breakthrough, harnessing the power of platelet-derived Renewosome™ technology to make your hair look fuller, stronger, and thicker.

\$138



## EYE

Renewosome™ exosome technology designed to address visible signs of aging for the delicate skin around your eyes.

- Dark circles & discoloration
- Puffy eye bags
- Wrinkles, fine lines & crow's feet, and crepey skin
- Excess skin & hooded eyes

---

# SUPPLEMENTS, IV THERAPY, & WEIGHT LOSS

---

---

# THORNE®

Thorne invests in comprehensive testing, sourcing the highest-quality ingredients, and creating the cleanest manufacturing processes to provide unparalleled solutions for your health.

Advanced Bone Support.....	\$27
Advanced Iron Support .....	\$25
Advanced DHA .....	\$30
Ashwagandha .....	\$21
B Complex #6 .....	\$25
Berberine 200mg .....	\$42
Collagen Fit .....	\$53
Collagen Plus .....	\$63
CoQ10 .....	\$49
Hormone Advantage .....	\$47
Magnesium Bisglycinate .....	\$58
Magnesium Glycinate .....	\$25
Melatonin 3 .....	\$15
Meta-Balance Menopause Formula .....	\$45
NiaCel 400 .....	\$70
Ovarian Care .....	\$59
Perimenopause Complete .....	\$52
Prenatal DHA .....	\$30
Pyridoxal 5'-Phosphate .....	\$53
ResveraCel .....	\$58
Rhodiola .....	\$22
Stress B Complex .....	\$25
Stress Balance .....	\$21
Undecylenic Acid .....	\$45
Vitamin C 500mg .....	\$21
Vitamin D 5000 IU .....	\$20
Vitamin D 10000 IU .....	\$26
Vitamin D + K2 .....	\$32
Women's Daily Probiotic .....	\$47
Women's Libido Boost .....	\$53
Womens Multi 50 .....	\$48
Zinc Bisglycinate 30mg .....	\$19

Don't see something you're looking for? Out of stock in the office or want to order at home?

Visit our online store for easy ordering!

<https://www.thorne.com/u/herwellness>

---

# WEIGHT LOSS MEDICATIONS

Pay by the Vial, NOT by the month



## SEMAGLUTIDE w/ Glycine

2MG VIAL

\$175

8MG VIAL

\$275

16MG VIAL

\$375

## TIRZEPATIDE w/ Glycine

20MG VIAL

\$300

40MG VIAL

\$400

60MG VIAL

\$500

**Initial Weight Loss appointments : \$99**

**Follow-up appointments\* : \$50**

\*required every 3 months to evaluate effectiveness, side effects, and appropriate use of the medication

---

# IV THERAPY

ALL IV Therapy infusions include 1 liter of normal saline with Vitamin B complex blend (thiamine, niacinamide, riboflavin, dexpanthenol, and pyridoxine).

\$175



## RECOVERY

The Recovery IV is designed to decrease recovery time, enhance athletic performance, replenish essential nutrients and reduce inflammation.

\$175



## GLOW

Designed to help brighten and rejuvenate the skin, the Glow IV contains Vitamin C, Alpha Lipoic Acid, Glutathione

\$200



## MYER'S COCKTAIL

Comprised of essential multivitamins and other nutrients, this cocktail premix is designed to help alleviate chronic symptoms, including ongoing pain, asthma and more.

\$175



## B-LEAN

Designed to help burn fat and boost metabolism, the B-Lean IV contains Methylcobalamin, L-Taurine, and combination of other B vitamins.

---

# NAD+ THERAPY

What is NAD+, and why does it matter?

Your body runs on energy—but not just the kind you get from food or caffeine. Deep inside your cells is a molecule called NAD+, and it's essential for everything from energy production to brain clarity to healthy aging. Unfortunately, NAD+ naturally declines with age, stress, and toxin exposure—leading to fatigue, brain fog, sleep disruption, and slower recovery.

You can replenish NAD+ directly using safe, medically supervised injections or IV infusions (or both!). Within days, many patients notice better focus, energy, and resilience.

At HER Wellness, we offer both injection and IV NAD+ therapy options, customized to your goals—whether that's daily function or deep longevity.

## NAD+ IV THERAPY

250mg of NAD+ injected over 2-4 hours  
Must receive consultation prior to scheduling IV therapy for medical clearance

Typically start with weekly treatments for 3-4 weeks, then space to once monthly depending on the response



## NAD+ IM or SUB-Q

At home treatment of NAD+. Cost of therapy is dependent on plan established with provider factoring in dose, frequency of injections, and length of time therapy is performed

**Don't want to do injections or an IV?**

You can take a supplement with **nicotinamide riboside** that will be metabolized to NAD+



**ResveraCel  
Niacel 400**





---

# PERSONALIZED WELLNESS & HORMONE CARE

---

---

# GETTING BACK TO YOU

Mental health treatment that goes beyond the diagnosis.  
It's about hormones, burnout, emotional load, and how you function every day.

At HER Wellness, we take a whole-person approach—blending medical care, lifestyle insight, and therapy coordination to support real, lasting change.

Feel like yourself again.



## MENTAL HEALTH SERVICES WE MANAGE

- Anxiety & Depression
- Hormonal Mental Health & PMDD
- Postpartum Care & Life Transitions
- Stress, Burnout,  
& High-Functioning Overwhelm
- Medication Management
- Therapy Referrals



We offer GeneSight Psychotropic Test as part of our comprehensive approach to care. GeneSight is a simple cheek swab test that looks at how your body may process certain medications commonly used to treat anxiety and depression. By providing insight into how your genetics can affect medication response, this test can help guide more personalized treatment decisions and reduce the trial-and-error process often involved in finding the right medication. GeneSight can be a valuable tool in supporting safer, more effective medical management of mental health symptoms.

---

# FERTILITY SERVICES



Through our collaboration with **Branch Care**, we are proud to offer advanced fertility services locally while partnering with one of the top fertility clinics in the Dallas-Fort Worth (DFW) area. This model allows you to receive most of your care close to home, with added oversight from a board-certified Reproductive Endocrinology & Infertility (REI) physician.

## HOW IT WORKS

- You receive fertility testing, monitoring, and many treatments locally at our office
- Your care plan is co-managed & reviewed by a board-certified REI physician
- Only select procedures (egg retrieval and IVF) require travel to DFW

**Branch Care Fee: Monthly subscription fee of \$75**

**We use your insurance when applicable! Self-pay for individual services outline below:**

\$200

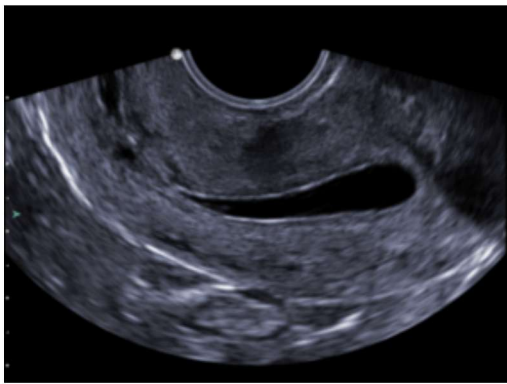
**INITIAL  
CONSULTATION**

\$100

**FOLLOW-UP VISIT**

\$145

**ANTRAL FOLLICLE  
COUNT - ULTRASOUND**



**\$160 SALINE SONOGRAM**

A saline sonogram is an office procedure where a small amount of sterile saline is placed into the uterus during an ultrasound to give a clearer view of the uterine cavity and help identify polyps, fibroids, scar tissue, or other abnormalities that could affect fertility or abnormal bleeding.

**\$260 TUBAL PATENCY TESTING WITH EXEM FOAM**



ExEm® Foam testing is a gentle procedure used to check whether the fallopian tubes are open. A soft foam contrast is placed through the cervix while ultrasound is used to watch the foam move through the uterus and tubes. Unlike a traditional HSG, it does not require radiation and is often more comfortable for patients.

\*pricing does not include Foam, a prescription is sent through insurance. Out of pocket cost is \$250



**\$400 INTRAUTERINE INSEMINATION**

Intrauterine insemination (IUI) is a fertility treatment that places a concentrated sample of healthy sperm directly into the uterus around the time of ovulation. IUI is often recommended for unexplained infertility, ovulation issues, or mild male factor infertility and is less invasive than IVF.

As part of the work-up for infertility, we recommend semen analysis for your partner. This can be performed at either of the local REI clinics, a urologist office, or at-home with Fellow. Testing with Fellow can be ordered on their website.



**Services above do not include medication costs associated with fertility treatments. Medications for ovulation induction are sent to local pharmacies. Other medications are provided through partner pharmacies with Branch Care to lower costs for patients.**

**You do not have to participate in Branch Care to receive fertility services.**

---

# PRO-NOX

At HER Wellness, we understand that gynecologic procedures can cause both physical discomfort and emotional anxiety. For too long, women have been told to simply “deal with it” or “it only hurts a little” – but we believe that is not enough. Your comfort matters, and your experience matters. That is why we chose to offer Pro-Nox™, giving our patients a safe and effective option to feel more relaxed and in control during in-office procedures.

Pro-Nox is a patient-controlled inhaled analgesia system that works quickly and wears off within minutes, allowing you to remain awake and in control throughout your visit. It can be used for gynecologic procedures such as IUD insertions, IUI, hysteroscopy, endometrial biopsies, and even pelvic exams during your annual visit if desired. This system can also be used during aesthetic treatments like microneedling or PRP scalp injections, helping you feel more relaxed during your care.



---

# MEN'S HORMONE THERAPY

BECAUSE MEN'S HORMONE HEALTH IS IMPORTANT TOO



What can Male TRT (Testosterone Replacement Therapy) do?

- ✓ Improved energy
- ✓ Better focus & clarity
- ✓ Increased strength & muscle tone
- ✓ Enhanced mood
- ✓ Improved libido

We provide individualized care with top-quality hormone management tailored to each patient's unique needs. Using lab-guided treatment and ongoing monitoring, we carefully evaluate hormone levels over time to ensure therapy remains safe, effective, and aligned with your symptoms and wellness goals.

\$175

**INITIAL  
CONSULTATION**

\$100

**FOLLOW-UP VISIT**

\$200

**2 MONTH SUPPLY OF  
TESTOSERONE**

**Appointments may be billed to insurance when applicable.  
Medications are cash-pay only.**



FOLLOW US



@HER.WELLNESSLLC



@HERWELLNESSLLC



HER WELLNESS