

DM 10

Battery Powered Digital Pressure Gauge

Ceramic Sensor

class 0.5

Nominal pressure

from 0 ... 1.6 bar up to 0 ... 250 bar

Special characteristics

- ▶ rotatable housing and display
- ▶ LC display
4.5-digit 7-segment display
- ▶ standard battery CR 2450
operation period > 1 500 h

Functions

- ▶ min / max function with reset function
- ▶ auto-zero
- ▶ setting of pressure unit
(bar, mbar, psi, MPa, mH₂O)
- ▶ configuration of switch-off automatic

The compact low-cost digital pressure gauge DM 10 is battery-powered and has an adjustable housing; it is thus extremely suitable for mobile pressure monitoring. The 4.5-digit LC-display indicates the battery status, the measurement value as well as the unit, this enables a fast and precise reading.

It is possible to switch between the most common units (bar, psi, Pa, MPa). Additional functions as auto-zero, min / max values and an automatic switching-off complete the DM 10 profile.

Preferred areas of use are

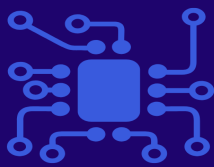


Mobile pressure monitoring
Plant and machine engineering
Pneumatics / hydraulics



Environmental engineering
(water – sewage – recycling)





Input Pressure													
Nominal pressure gauge	[bar]	1.6	2.5	4	6	10	16	25	40	60	100	160	250
Overpressure	[bar]	4	4	10	10	20	40	40	100	100	200	400	400
Burst pressure	[bar]	7	7	15	15	35	70	70	150	150	250	450	450
Vacuum resistance		unlimited											

Performance	
Accuracy ¹	$\leq \pm 0.5 \% \text{ FSO BFSL}$
Measuring rate	1/sec
Long term stability	$\leq \pm 0.3 \% \text{ FSO / year}$

¹ accuracy according to IEC 60770 – minimum value setting (non-linearity, hysteresis, repeatability)

Thermal effects (Offset and Span)	
Tolerance band	$\leq \pm 0.5 \% \text{ FSO / 10 K (typ.)}$ in compensated range 0 ... 50 °C

Permissible temperatures	
Permissible temperatures	medium: -25 ... 85 °C environment: 0 ... 70 °C storage: 0 ... 70 °C

Materials	
Pressure port / housing	stainless steel 1.4301 (304)
Display housing	PA 6.6, Polycarbonate
Seals (media wetted)	FKM others on request
Diaphragm	ceramics Al ₂ O ₃ 96 %
Media wetted parts	pressure port, seals, diaphragm

Miscellaneous	
Display	LC-Display, visible range 36 x 15 mm; 4.5-digit 7-segment-display, digit size 8.5 mm, range of indication ± 1999 decimal place is calculated automatically by device considering range and accuracy - customer-setting not possible
Electromagnetic compatibility	emission and immunity according to EN 61326
Supply	3 V lithium battery (CR 2450)
Data storage	EEPROM (non-volatile)
Ingress protection	IP 65
Installation position	any
Weight	approx. 150 g
Operational life of battery	min. 1 500 h with permanent operation
Mech. operational life	100 million load cycles
CE-conformity	EMC directive 2014/30/EU pressure equipment directive: 2014/68/EU (Modul A) ²

² This directive is only valid for devices with maximum permissible overpressure > 200 bar.

Dimensions (in mm)	

DM 10 Battery Powered Digital Pressure Gauge

Ordering code DM 10

DM 10

□□□ - □□□□ - 0 - □□ - 0K0 - □□□ - □ - □ - □ - □ - □□□

Pressure													
	gauge	M	0	4									
Input													
	[bar]												
	1.6		1	6	0	1							
	2.5		2	5	0	1							
	4.0		4	0	0	1							
	6.0		6	0	0	1							
	10		1	0	0	2							
	16		1	6	0	2							
	25		2	5	0	2							
	40		4	0	0	2							
	60		6	0	0	2							
	100		1	0	0	3							
	160		1	6	0	3							
	250		2	5	0	3							
	customer		9	9	9	9							consult
Accuracy													
	[BFSL]												
	0.5 %						B	8					
	customer						9	9					consult
Mechanical connection													
	G1/4" DIN 3852								3	0	0		
	1/4" NPT								N	4	0		
	customer								9	9	9		consult
Seals													
	FKM									1			
	customer									9			consult
Pressure port													
	Stainless steel 1.4301 (304)									2			
	customer									9			consult
Diaphragm													
	Ceramics Al ₂ O ₃ 96%									2			
	customer									9			consult
Front foil													
	standard										1		
	neutral										N		
	customer										9		consult
Special version													
	standard										0	0	0
	customer										9	9	9
													consult

01.09.2019