

DM 17

Battery Powered Digital Pressure Gauge

stainless steel sensor, welded

class 0.5

Nominal pressure

from 0 ... 6 bar up to 0 ... 600 bar

Special characteristics

- ▶ rotatable housing and display
- ▶ LC display
4.5-digit 7-segment display
- ▶ standard battery CR 2450
operation period > 1 500 h

Functions

- ▶ min / max function with reset function
- ▶ auto-zero
- ▶ setting of pressure unit
(bar, mbar, psi, MPa, mH₂O)
- ▶ configuration of automatic switch-off

Option

- ▶ oil and grease free version
for oxygen application

The compact digital pressure gauge DM 17 is characterized by its long-lasting battery supply as well as its adjustable housing. Thus, the DM 17 is ideal for mobile pressure monitoring. An unusual feature of the DM 17 is the welded pressure sensor. An absolute use in oxygen applications is given and strictest requirements on the particle liberty are fulfilled.

The 4.5-digit LC-display indicates the battery status, the measurement value as well as the unit; this enables a fast and precise reading.

Additional functions like setting of pressure unit, auto-zero, min / max values and an automatic switching-off function.

Preferred areas of use are

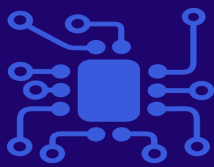


Mobile pressure monitoring
Plant and machine engineering
Pneumatics / hydraulics



Oxygen application





SensaCo Ltd.

Input Pressure													
Nominal pressure gauge	[bar]	6	10	16	25	40	60	100	160	250	400	600	
Overpressure	[bar]	12	20	32	50	80	120	200	320	500	800	1 200	
Burst pressure	[bar]	30	50	80	125	200	300	500	800	1 400	2 000	3 000	
Vacuum resistance		unlimited											
Performance													
Accuracy		≤ ± 0.5 % FSO BFSL											
Measuring rate		1/sec											
Long term stability		≤ ± 0.3 % FSO / year at reference conditions											
Thermal effects (Offset and Span)													
Tolerance band		≤ ± 0.5 % FSO / 10 K (typ.) in compensated range 0 ... 50 °C											
Permissible temperatures													
Permissible temperatures		medium: -25 ... 85 °C				environment: 0 ... 70 °C				storage: 0 ... 70 °C			
Materials													
Pressure port / housing		stainless steel 1.4571 (316Ti) / 1.4301 (304)											
Display housing		PA 6.6, Polycarbonate											
Seal of sensor		none (welded)											
Diaphragm		stainless steel 1.4542 (630)											
Media wetted parts		pressure port, diaphragm											
Miscellaneous													
Display		LC-Display, visible range 36 x 15 mm; 4.5-digit 7-segment-display, digit size 8.5 mm, range of indication ±1999 decimal place is calculated automatically by device considering range and accuracy - customer-setting not possible											
Electromagnetic compatibility		emission and immunity according to EN 61326											
Supply		3 V lithium battery (CR 2450)											
Data storage		EEPROM (non-volatile)											
Ingress protection		IP 65											
Installation position		any											
Weight		plastic: approx. 150 g											
Operational life of battery		min. 1 500 h with permanent operation											
Mech. operational life		100 million load cycles											
CE-conformity		EMC directive 2014/30/EU pressure equipment directive: 2014/68/EU (Modul A) ¹											
¹ This directive is only valid for devices with maximum permissible overpressure > 200 bar.													
Dimensions (in mm)													
<div><div></div><div></div><div></div><div></div></div>													
G 1/2" EN 837				G 1/4" EN 837				1/4" NPT					

DM 17 Battery Powered Digital Pressure Gauge

Ordering code DM 17

DM 17

□□□ - □□□□ - 0 - □□ - 0K0 - □□□ - □ - □ - □ - □ - □□

Pressure											
	gauge	M	0	3							
Input											
	[bar]										
	6.0		6	0	0	1					
	10		1	0	0	2					
	16		1	6	0	2					
	25		2	5	0	2					
	40		4	0	0	2					
	60		6	0	0	2					
	100		1	0	0	3					
	160		1	6	0	3					
	250		2	5	0	3					
	400		4	0	0	3					
	600		6	0	0	3					
	customer		9	9	9	9					consult
Accuracy											
	[BFSL]										
	0.5 %					B	8				
	customer					9	9				consult
Mechanical connection / Seals											
	G1/2" EN837 / without					2	0	0	2		
	1/4" NPT / without					N	4	0	2		
	G1/4" EN 837 / without					4	0	0	2		
	customer					9	9	9	9		consult
Pressure port											
	Stainless steel 1.4571 (316Ti)								1		
	customer								9		consult
Diaphragm											
	Stainless steel 1.4542 (630)								Z		
	customer								9		consult
Front foil											
	standard								1		
	neutral								N		
	customer								9		consult
Special version											
	standard								0	0	0
	oxygen application								0	0	7
	customer								9	9	9
											consult