

## SLS Series

### Model: SLS-LC

Submersible level sensor

- ceramic sensor

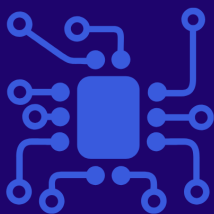


#### Description:

The SLS-LC range of submersible level sensors is crafted using a Ceramic (96% Aluminium Oxide  $\text{Al}_2\text{O}_3$ ) piezo-resistive sensing component, encapsulated in a durable stainless steel enclosure. Combined with Stork Solutions' exclusive cable gland, pressure-tested to 10 bar/100m for permanent submersion, this makes for a resilient and economically priced level measurement tool for diverse applications.

This device offers raw millivolt output, ideal for low energy battery functions, or has an inbuilt microprocessor to deliver amplified outputs like 4-20mA, 0-10V, 0.5 to 4.5V ratiometric. The integrated 16-bit microprocessor facilitates extensive linearisation, temperature adjustment, and calibration, guaranteeing excellent precision, stability, and consistency. Applicable for use in areas such as storage tanks, IBC's & tote measurements, diesel oil tanks.

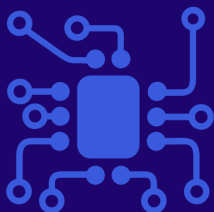
Product Highlights:	Applications include, but not limited to:
<ul style="list-style-type: none"><li>• Level ranges from 0.5m up to 100m</li><li>• Accuracy class: <math>&lt;\pm 0.5\%</math> / <math>&lt;\pm 0.25\%</math></li><li>• Ceramic sensor, high corrosion resistance</li><li>• Passive millivolt output option</li><li>• High resistance, low power consumption</li><li>• Cost effective for OEM solutions</li></ul>	<ul style="list-style-type: none"><li>• OEM installations</li><li>• Storage tanks and vessels</li><li>• IBC &amp; Tote containers</li><li>• Diesel Oil Tank</li><li>• Car wash suds tanks</li></ul>



# SensaCo Ltd.

## Specification:

SLS Series - Submersible level sensor - SLS-LC	
Sensor technology	Piezo-resistive
Output Versions	mV/V (4-wire), 4-20mA (2-wire), 0-5V/0-10V (3-wire), 0.5 to 4.5V (3-wire ratiometric)
Supply voltage	<b>mV:</b> 2-30Vdc / <b>4-20mA:</b> 8-32Vdc / <b>0-5V/0-10V:</b> 13-32Vdc / <b>Ratiometric:</b> 2.7-5.5Vdc
Pressure reference	Gauge (standard), Sealed Gauge, Absolute
Level ranges	3.5, 5, 10, 20, 30, 50, 100mWG
Safe over range	1.5 times rated level
Burst rating	3 times rated level
Accuracy (NL&H)	$\leq \pm 0.5\%$ / $\leq \pm 0.25\%$ (dependant on range)
Long Term Stability:	$\leq \pm 0.10\%$ FS
Response time	<10mseconds
Ambient temperature	-20 °C to +65 °C
Media temperature	-20 °C to +65 °C (non-freezing)
Storage temperature	-20 °C to +80 °C
Temperature effects	Typical thermal zero and span coefficients, TZS: $\pm 0.02\%$ FS/°C, TSS: $< -0.015\%$ /°C
Media wetted parts	316 Stainless Steel, Al <sub>2</sub> O <sub>3</sub> , Viton, EPDM, NBR
Permissible media	All fluids compatible with media wetted parts
Cable sheath material	PVC, PUR, FEP
Pressure connection	Protective self flushing nose cone fitted, G $\frac{1}{4}$ " DIN 3852 male when removed
Environmental Protection	IP68, permanent submersion



# SensaCo Ltd.

## Part Numbering system

SLS-LC - Low Cost Submersible Level Transmitter SLS-LC - X X - X X X X - X X - X X X X X - X X

### Output Type

mV/V  
4-20mA (2-wire)  
0-5V (3-wire)  
1-5V (3-wire)  
0-10V (3-wire)  
0.5 to 4.5V (3-wire)

A  
D  
E  
F  
G  
H

### Accuracy Class

0.50%  
0.25%

A  
B

### Cable Material

PVC  
PUR

A  
B

### Cable Length (m)

2  
3  
5  
10  
15  
20  
25  
30  
40  
50  
100

0 0 2  
0 0 3  
0 0 5  
0 1 0  
0 1 5  
0 2 0  
0 2 5  
0 3 0  
0 4 0  
0 5 0  
1 0 0

Special Length... On request

9 9 9

### Housing Material

316 Stainless Steel

B

### Seal Material

Viton  
(Drinking Water Approved) EPDM  
NBR

V  
E  
N

### Level Range

0 - 3.5mWG  
0 - 5mWG  
0 - 10mWG  
0 - 20mWG  
0 - 30mWG  
0 - 50mWG  
0 - 100mWG

0 3 5 0  
0 5 0 0  
1 0 0 0  
2 0 0 0  
3 0 0 0  
5 0 0 0  
1 0 0 1  
9 9 9 9

Special Range... On request

### Pressure Datum

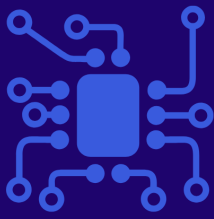
Gauge  
Sealed Gauge  
Absolute

G  
S  
A

### Special Options

None

0 0



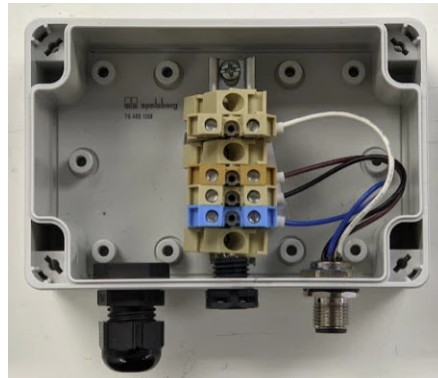
# SensaCo Ltd.

## Accessories:

### NPT Threaded Adaptor



### Vented Junction Box



### Cable Hanger

