

Model: SSTT

Subsea Temperature Transmitter



Description:

The SSTT Subsea temperature transmitter has been developed using a Class A, PT100 sensing element housed in a robust housing capable of withstanding high external pressures. It has the option of a subsea wet-mateable connector in both 2, 3 or 4-pin configuration, depending on the customers preferred mating connectors, offering complete and permanent submersion up to 3000m depth. We can also install customer specified connectors from all the major manufacturers to ensure the sensors interface with your existing infrastructure.

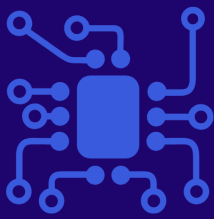
The standard version is made from high quality Duplex Stainless Steel with options of Marine Bronze and Titanium depending on the application requirements.

Product Highlights:

- Options for calibrated temperature range
- Accuracy $<\pm 0.5^{\circ}\text{C}$ / $<\pm 0.25^{\circ}\text{C}$
- High corrosion resistance
- Choice of wetted materials
- Wet-mateable electrical connectors with depth ratings to 4000m
- Choice of mechanical connections
- Optional protruding probe, various lengths

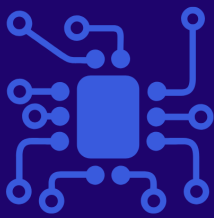
Applications include, but not limited to:

- Oil and gas drilling and exploration
- Deep sea remote or unmanned vehicles
- Subsea equipment
- Submarine installations
- Deep sea dredging suction pipes & pumps
- Subsea Pods

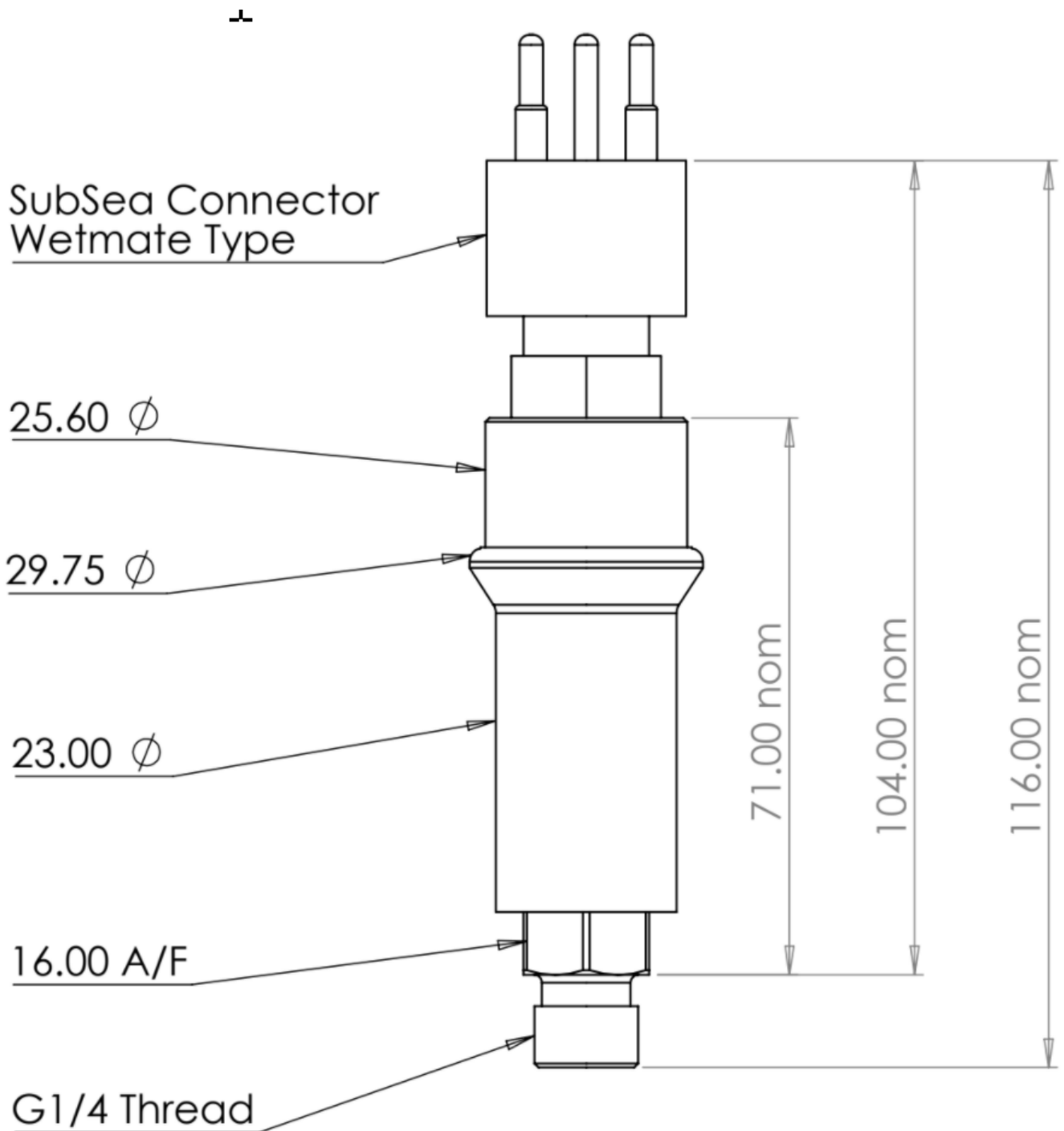


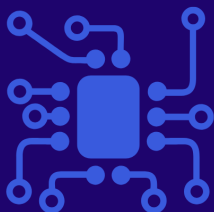
SensaCo Ltd.

| SSTT Specification | |
|-----------------------|--|
| Sensor technology | Resistance thermometer, RTD |
| Output Versions | 4-20mA (2-wire) (Standard) Optional: PT100 / 3-wire, PT100 / 4-wire, PT1000 / 3-wire, PT1000 / 4-wire |
| Supply voltage | 10 - 32V dc |
| Accuracy | $\leq \pm 0.5^{\circ}\text{C}$ / $\leq \pm 0.25^{\circ}\text{C}$ |
| Long Term Stability: | $\leq \pm 0.10$ % FS |
| Sensor Startup time | 4 Seconds |
| Response time | 1 Second |
| Media temperature | - 4 to 60°C, 25 to 140°F |
| Storage temperature | - 40 to 60°C, - 40 to 140°F |
| Media wetted parts | Standard: Duplex UNS31803 Stainless Steel Optional:, Marine Bronze CA104 or Titanium housing, |
| Permissible media | All fluids compatible with media wetted parts |
| Electrical connection | 2-pin, 3-pin or 4-pin Subsea wet-mateable connector (others on request) |
| Pressure connection | G1/4" DIN 3852 male (Standard), 1/4" NPT male, Optional Nose cone |
| Submersible depth | Tested to 3000m |



SSTT Dimensional Drawings

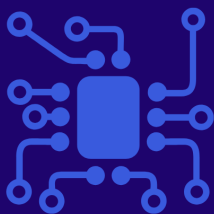




SensaCo Ltd.


SSTT Part Numbering system

| SSTT - SubSea Temperature Transmitter | SSTT | - | X | X | - | X | X | - | X | X | - | X | X | Price (£) |
|---------------------------------------|------|---|---|---|---|---|---|---|---|---|---|---|---|-----------|
| Output Type | | | | | | | | | | | | | | |
| PT100, 3-wire Class A | A | | | | | | | | | | | | | - |
| PT100, 4-wire Class A | C | | | | | | | | | | | | | - |
| PT1000, 3-wire Class A | D | | | | | | | | | | | | | - |
| PT1000, 4-wire Class A | E | | | | | | | | | | | | | - |
| 4-20mA / 2-wire | F | | | | | | | | | | | | | - |
| Other (contact sales) | X | | | | | | | | | | | | | - |
| Probe Length | | | | | | | | | | | | | | |
| None | A | | | | | | | | | | | | | - |
| 25mm | B | | | | | | | | | | | | | £20.00 |
| Electrical Connection | | | | | | | | | | | | | | |
| 2-pin Subsea wet-mateable connector | | | | 2 | | | | | | | | | | - |
| 3-pin Subsea wet-mateable connector | | | | 3 | | | | | | | | | | - |
| 4-pin Subsea wet-mateable connector | | | | 4 | | | | | | | | | | £40.00 |
| Other (contact sales) | | | | X | | | | | | | | | | - |
| Process Connection | | | | | | | | | | | | | | |
| G1/4" male DIN 3852 | | | | | G | | | | | | | | | - |
| 1/4" NPT male | | | | | N | | | | | | | | | - |
| G1/2" male DIN 3852 | | | | | H | | | | | | | | | - |
| Other (contact sales) | | | | | X | | | | | | | | | - |
| Housing Material | | | | | | | | | | | | | | |
| UNS31803 Duplex Stainless Steel | | | | | | D | | | | | | | | £357.00 |
| Marine Bronze CA104 | | | | | | M | | | | | | | | £335.00 |
| Titanium Alloy | | | | | | T | | | | | | | | £560.00 |
| Other (contact sales) | | | | | | X | | | | | | | | - |
| Seal Material | | | | | | | | | | | | | | |
| Viton | | | | | | | V | | | | | | | - |
| EPDM | | | | | | | E | | | | | | | - |
| NBR | | | | | | | N | | | | | | | - |
| Temperature Range | | | | | | | | | | | | | | |
| 0 to +100°C (standard) | | | | | | | A | | | | | | | - |
| 0 to +50°C | | | | | | | B | | | | | | | - |
| -10 to +60°C | | | | | | | C | | | | | | | - |
| 0 to +35°C | | | | | | | D | | | | | | | - |
| 32 to +212°F | | | | | | | E | | | | | | | - |
| 0 to +122°F | | | | | | | F | | | | | | | - |
| 14 to 140°F | | | | | | | G | | | | | | | - |
| 32 to 95°F | | | | | | | H | | | | | | | - |
| Custom | | | | | | | 9 | | | | | | | - |
| Special Options | | | | | | | | | | | | | | |
| None | | | | | | | | | | 0 | 0 | | | - |



SensaCo Ltd.

Accessories:

| Mating Wet-mateable moulded cable cordset | |
|---|---|
|  | |
| Nose Cone | USB Configuration Kit |
|  |  <p><u>USB Configuration Kit</u></p> <p>Part No.: USB Config MKII</p> <p>Allows you to reprogram the temperature range and filtering of the output from the sensor</p> |