



IR remote controller
SIR-25

SWE-73-A

- ❑ low-cost meter in a small case
- ❑ input type defined from menu: 0/4-20 mA; 0/1-5V, 0/2-10V
- ❑ RS-485 / Modbus RTU
- ❑ brightness adjustable in 8 steps
- ❑ signal peak value detection
- ❑ all parameters are freely programmable with remote controller or free configuration software S-Config

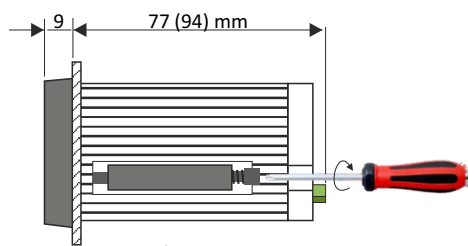
The low-cost **SWE-73-A** is a small, simple digital panel indicator, equipped with two measurement inputs: one current input (0-20/4-20mA) and one voltage input (0-5/1-5/0-10/2-10V). Current input has additionally overcurrent protection circuit, which protects standard resistor. The selection of active input is realised by software and selected input can be changed at any time. Additionally the **SWE-73-A** allows user to select a conversion characteristic of several kinds: linear, square, square root, and user defined (max. 20 points length). The 16-bit A/D converters used in them ensure very high stability and measurement precision. The RS-485 interface makes it easy to set up measurement networks in production process monitoring systems, and also to use the indicators as smart, programmable, digital converters of input signals for computer systems. The meter can be configured with IR remote controller or free S-Config software via the RS-485 communication port. Configuration of the device can also be programmed to the customer's order.

TECHNICAL DATA

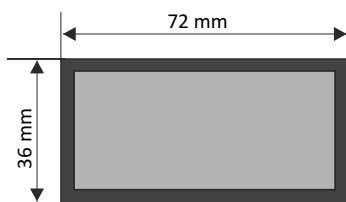
| | |
|-------------------------|--|
| Power supply | 110V AC $\pm 10\%$ separated, 230V AC $\pm 10\%$ separated or 10 \div 30V DC not separated from measurement input |
| Power consumption | for 110V AC and 230V AC: max. 1,5 VA; for 24V DC: max. 1 W |
| Display | LED, red, 4 x 13 mm high, brightness adjustable in 8 steps |
| Displayed values | -999 \div 9999 user programmable also with decimal point (it's possibly to set it according to the order) |
| Input | <u>current</u> : 0-20 mA or 4-20 mA, user programmable (it's possibly to set it according to the order), overload-protected, input current limited to about 50 mA <u>voltage</u> : 0-5V, 1-5V, 0-10V or 2-10V, user programmable (it's possibly to set it according to the order) |
| Accuracy | 0.1% @ 25°C \pm one digit (for 0-10V input) |
| Stability | 50 ppm/°C |
| Communication interface | RS-485, 8N1 and 8N2, 1200 bit/s \div 115200 bit/s, Modbus RTU (not galvanically isolated) |
| Operating temp. | 0°C \div +50°C (standard), -20°C \div +50°C (option) |
| Storage temp. | -10°C \div +70°C (standard), -20°C \div +70°C (depending on option) |
| Protection class | IP 65 (front), available additional frame IP 65 for panel cut-out sealing; IP 20 (case and connection clips) |
| Case | panel mounting; material: NORYL UL94V-0 |
| Dimensions | <u>case (WxHxD)</u> : 72 x 36 x 77 mm (for 10 \div 30V DC); 72 x 36 x 94 mm (for 110V AC and 230V AC) <u>panel cut-out dimensions</u> : 67 x 32,5 mm <u>installation depth</u> : min. 78 mm (for 10 \div 30V DC); min. 95 mm (for 110V AC and 230V AC) <u>board thickness</u> : max. 5 mm |
| Weight | approx. 176 g |



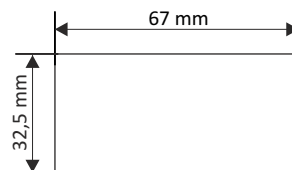
DIMENSIONS



Side view

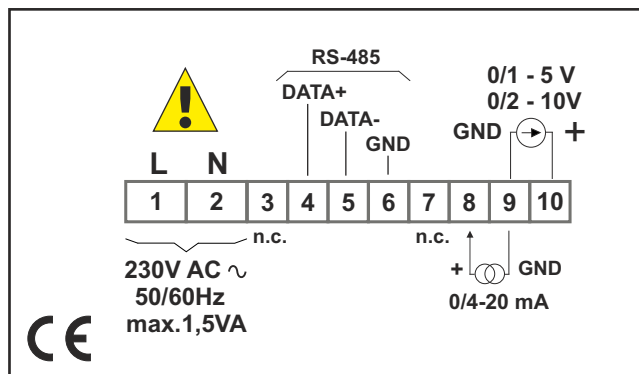


Case dimensions



Panel cut-out dimensions

PIN ASSIGNMENTS



ORDERING

SWE-73-A-X-XX1*-X

power supply:

- 1 : 10 ÷ 30V DC
- 2 : 230V AC
- 8 : 110V AC

options:

- 00 : no options
- 01 : IP 65 frame
- 08 : operating temp. -20°C ÷ +50°C
- 0P : IP 65 frame + operating temp. -20°C ÷ +50°C

units:

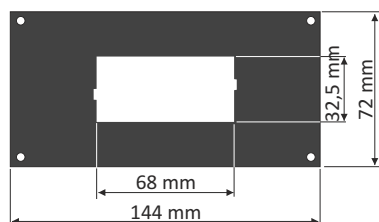
- 0 : no unit on display
- °C
- %
- bar
- m
- l/min
- A
- V
- MPa

- * When configuration of the device should be set by SIMEX it's necessary to determine:
- type of input (0-20 mA, 4-20 mA, 0-5 V, 1-5 V, 0-10 V, 2-10 V)
 - the beginning of measuring range according to 0/4 mA or 0/1/2 V (depending on version)
 - the end of measuring range according to 20 mA or 5/10V (depending on version)





MOUNTING PLATES



SMP-147/73
to mount 72 x 36 mm
size unit in place
of 144 x 72 mm cut-out

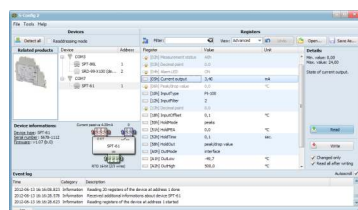
REMOTE CONTROLLER



The **SIR-25** infraRed remote control may be used as external programming keyboard for all SIMEX devices equipped with IR receivers and remote programming functions. Pressing of any local IR controller key, causes transmission of it's code to the device. The remote control features a five-button keyboard, including the **F/Σ/RESET** function button dedicated to the operation of the devices in the following group: counters, flow meters, and tachometers. Functions of particular keys depend on devices features.

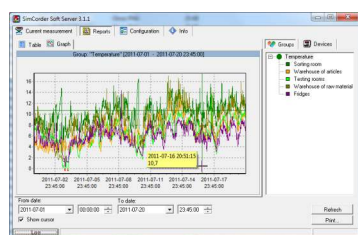
Power supply voltage: 3V DC - 1 lithium battery CR2032 type
Operation range: from 0,5 to 5 m (depend on programmed device features)

SOFTWARE



S-Config 2 is used for the simultaneous detection of devices in multiple Modbus RTU networks and allows user to change the configuration of most of them. For each detected device a list of its registers, which the user can modify, is displayed and also additional informations about device parameters (type, address in the network, etc.).

S-Config software can be downloaded from SIMEX website at www.simex.pl



SimCorder Soft is a visualisation application created to facilitate work with advanced networks of the SIMEX devices, for acquisition, visualisation, reporting, archiving, exporting and printing of measurement data from all network devices. You can download measurements from the devices automatically or on demand. There is a possibility of immediate notification about emergency states via SMS or e-mail, which will often allow to quickly resolve an arising problem while avoiding long and expensive stoppages. You can view the measurement data, emergency states and configuration via the internet at every time.

CONVERTERS



The **SRS-U4** module is designed to connect a USB host to slave devices equipped with RS-485 interface. The PC with special software can be used as a host. The **SRS-U4** unit guarantees full galvanic isolation between USB and RS-485 circuits. The converter can work with any devices equipped with RS-485 interface and contains integrated circuit which supports USB 1.1 and USB 2.0 standards. The main purpose is connection of PC host computer with industrial data acquisition and visualisation systems based on RS-485 interface.

The **SRS-U4** can be also manufactured with DIN mounting adaptor.