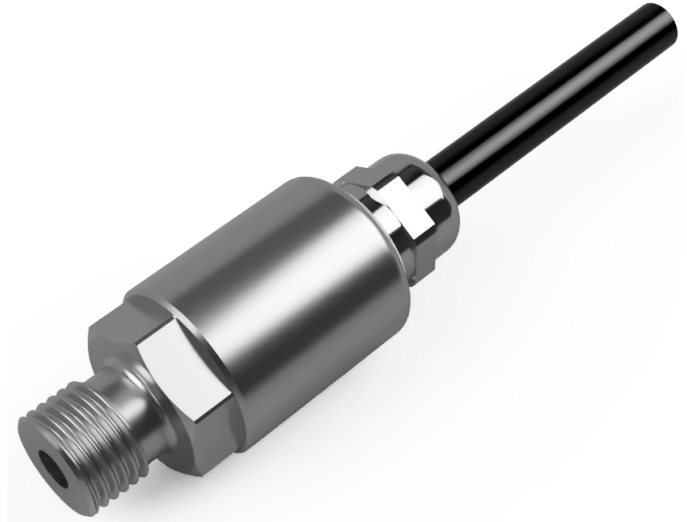


## Titan Series

### Model: TPTLRd

Low Range

Pressure Transmitter - Digital

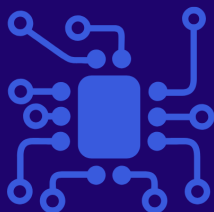


#### Description:

The Titan TPTLRa series of pressure transducers have been developed using a Stainless Steel piezo-resistive silicon sensing element housed in a robust stainless steel housing. It has the option of an integrated Cable outlet or an M12 x 1, 4-Pin connector both offering up to IP67\* ingress protection.

The internal PCB incorporates a versatile microprocessor enabling a range of digital communications including i2c and SPi from a 2.7 - 5.5V dc supply.

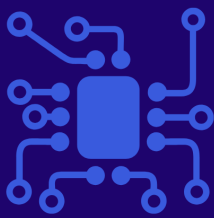
Product Highlights:	Applications include, but not limited to:
<ul style="list-style-type: none"><li>• Pressure ranges from 50mbar up to 20 Bar</li><li>• Accuracy <math>&lt;\pm 0.25\%</math> / <math>&lt;\pm 0.10\%</math></li><li>• Responsive stainless steel sensor</li><li>• I2c and SPi supported</li><li>• High level of temperature compensation</li><li>• Choice of mechanical connections</li><li>• Cost effective for Industrial and OEM solutions</li></ul>	<ul style="list-style-type: none"><li>• OEM installations</li><li>• Laboratory &amp; Research testing</li><li>• Pneumatic testing</li><li>• Medical testing / prototyping</li><li>• Data loggers</li><li>• Aerospace test and research</li><li>• Automotive component testing</li><li>• Academic research</li></ul>



# SensaCo Ltd.

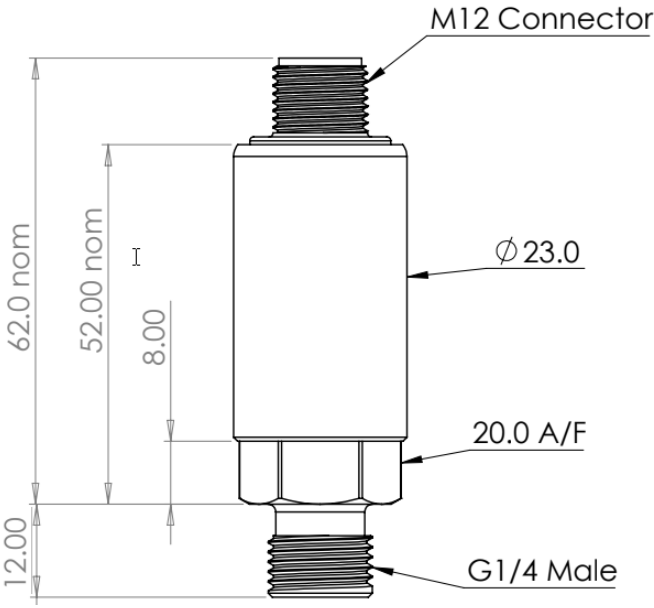
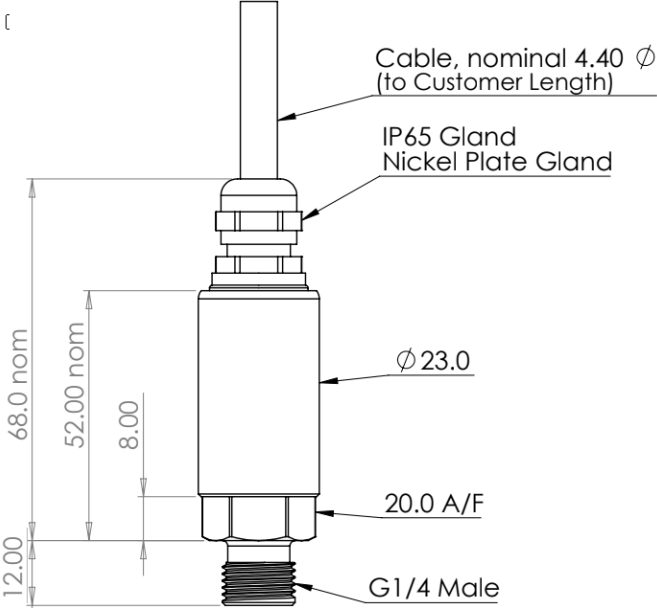


## Specification:

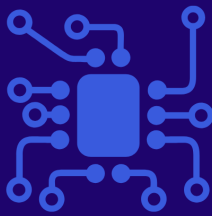
Titan Pressure Transducer - TPTLRd			
Sensor technology	Piezo-resistive, Silicon		
Output Versions	I2c, SPi		
Supply voltage	2.7 - 5.5V dc		
Pressure reference	Gauge (Others available on request)		
Pressure ranges	70, 200, 350, 700, 1000mbar 2, 3.5, 7, 10, 20 Bar		
Safe over pressure	1.5 times rated pressure		
Burst Pressure	3 times rated pressure		
Accuracy (NL&H)	$\leq \pm 0.25\%$ / $\leq \pm 0.10\%$ FS (dependant on range)		
Long Term Stability	$\leq \pm 0.10\%$ FS		
Response Time (ms)	Various Options, Consult Sales		
Ambient temperature	-20 °C to +85 °C		
Media temperature	-40 °C to +125 °C		
Storage temperature	-20 °C to +80 °C		
Temperature effects	Typical thermal zero and span coefficients, TZS: $\pm 0.02\%$ FS/°C, TSS: $< -0.015\%$ /°C		
Media wetted parts	303 & 316 Stainless Steel, Viton		
Permissible media	All fluids compatible with media wetted parts		
Electrical connection	M12 x 1, 4-pin male connector (mating cable sold separately) Cable Outlet with 0.25m screened PVC cable		
Pressure connection	G1/4" DIN 3852 male & female, 1/4" NPT male, 7/16-20 UNF-2A male SAE#4 J514		
Environmental Protection	M12 connector	Gauge reference $\leq 50$ bar: <b>IP65</b>	Absolute, Sealed Gauge reference or $> 50$ bar range: <b>IP67</b>
	Cable Outlet	<b>IP65</b>	



# SensaCo Ltd.

## Dimensional Drawings:

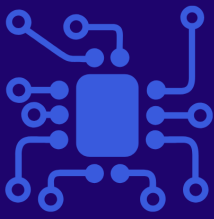
M12 Connector	Cable Outlet
	
	



# SensaCo Ltd.

## Part Numbering system

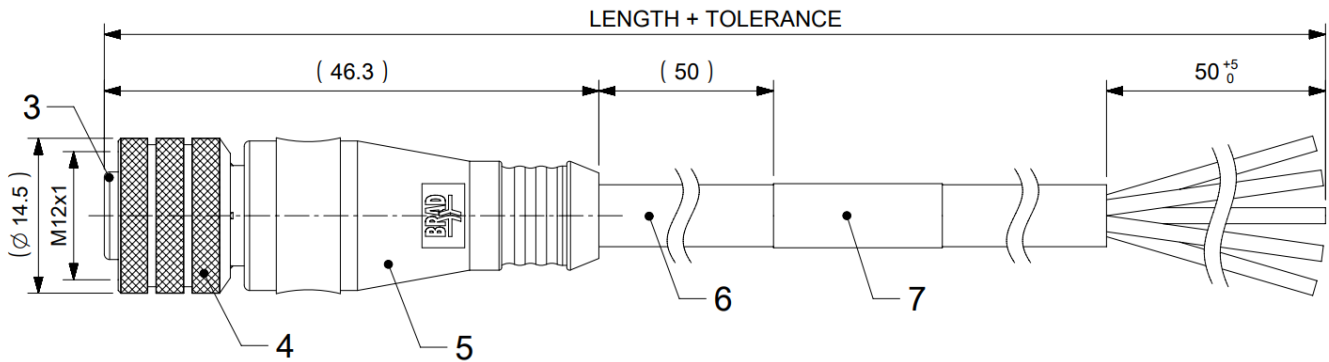
TPTLRd - Titan Low Range Pressi TPTLRd - X X - X X - X X - X X X X X - X X														
Output Type														
i2c	A													
SPi	B													
Accuracy Class														
0.25%	A													
0.10%	B													
Electrical Connection														
Connector M12 x 1, 4-pin male		A												
Cable Outlet IP65		B												
Process Connection														
G1/4" male DIN 3852			G											
G1/4" female DIN 3852			F											
1/4" NPT male			N											
7/16-20 UNF-2A male SAE#4 J514			U											
Housing Material														
303 Stainless Steel			A											
316 Stainless Steel			B											
Seal Material														
Viton				V										
(Drinking Water Approved) EPDM				E										
NBR				N										
Pressure Range														
50mbar						0	0	5	0					
200mbar						0	2	0	0					
350mbar						0	3	5	0					
700mbar						0	7	0	0					
1000mbar						1	0	0	0					
2 Bar						2	0	0	0					
3.5 Bar						3	0	0	0					
7 Bar						7	0	0	0					
10 Bar						1	0	0	1					
20 Bar						2	0	0	1					
5 Psi (example)						P	0	0	5					
10 Psi (example)						P	0	1	0					
Pressure Datum														
Gauge										G				
Special Options														
None												0	0	



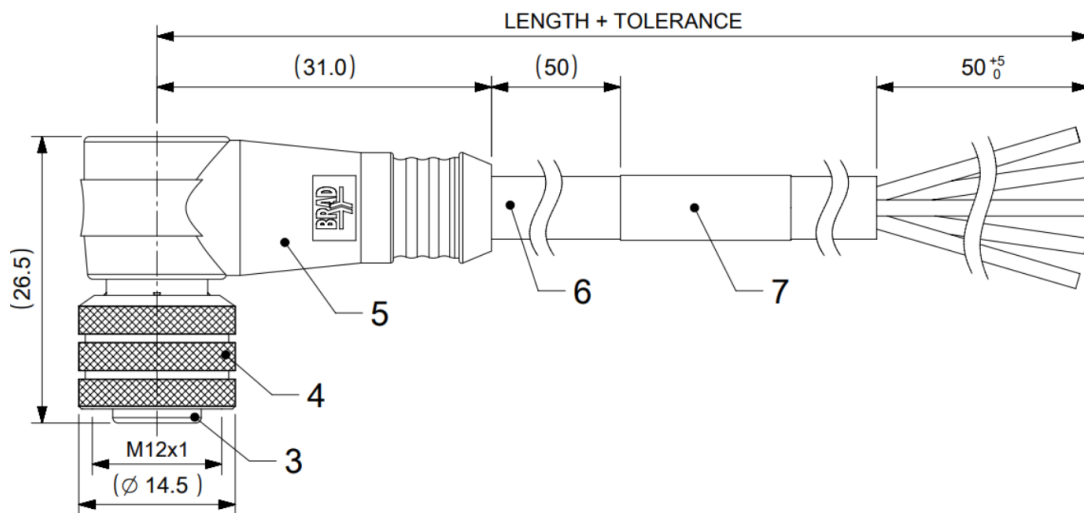
# SensaCo Ltd.

## Accessories:

### Mating M12 cable cordset - Straight



### Mating M12 cable cordset - Right-Angled



### Temperature Reducing Adaptor

