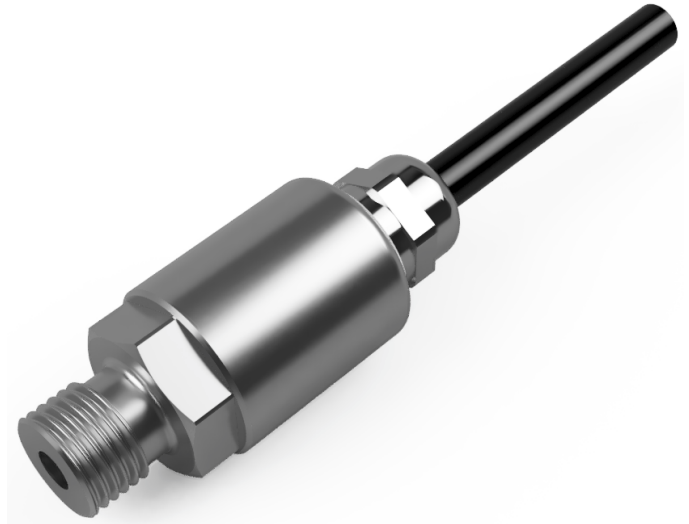


Titan Series

Model: TPTd

Digital Pressure Transmitter



Description:

The Titan TPT series of pressure transducers have been developed using a Ceramic (96% Aluminium Oxide Al_2O_3) piezo-resistive sensing element housed in a robust stainless steel housing. It has the option of an integrated Cable outlet or an M12 x 1, 4-Pin connector both offering up to IP67* ingress protection.

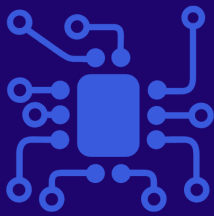
The internal PCB incorporates a versatile microprocessor enabling a range of digital communications including i2c and SPi from a 2.7 - 5.5V dc supply.

Product Highlights:

- Pressure ranges from 0.5 up to 600 bar
- Accuracy $<\pm 0.25\%$ / $<\pm 0.10\%$
- Ceramic sensor, high corrosion resistance
- I2c and SPi supported
- Low power consumption
- Naturally high frequency response from 1kHz up to 75kHz
- Choice of mechanical connections
- Cost effective for OEM solutions

Applications include, but not limited to:

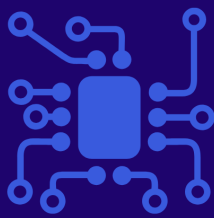
- OEM installations
- Laboratory & Research testing
- Medical testing / prototyping
- Pressure surge detection
- Data loggers
- Automotive component testing
- Academic research



SensaCo Ltd.

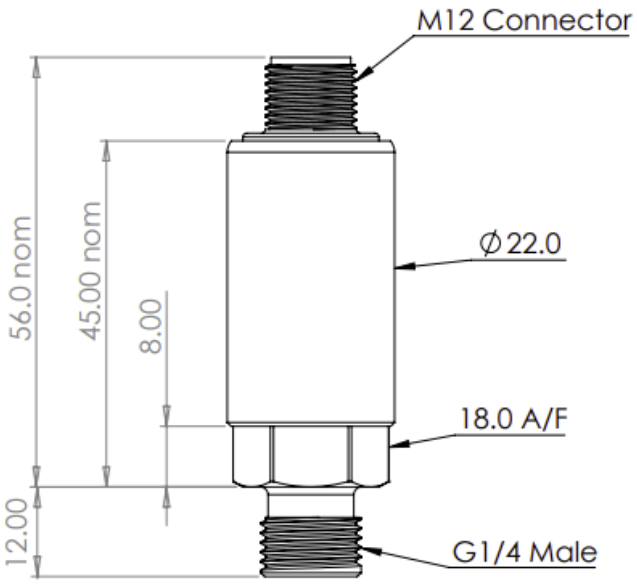
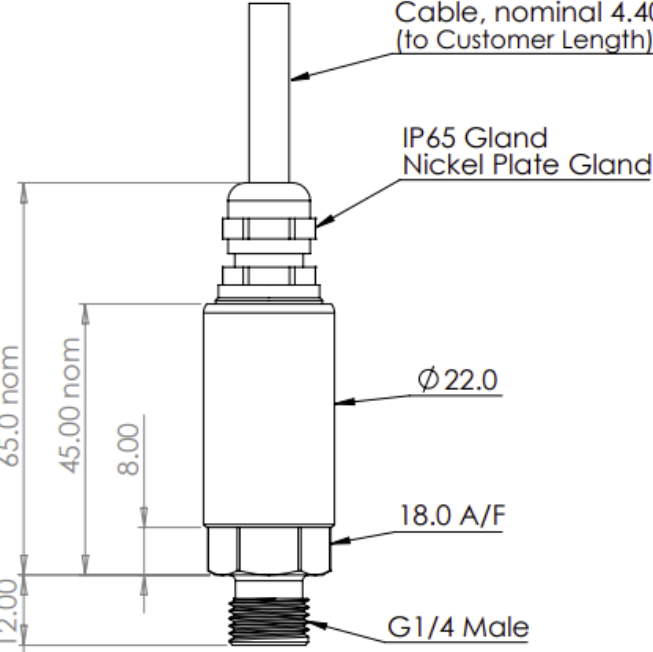


Specification:

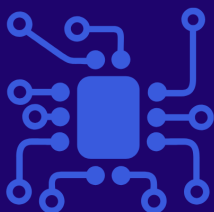
Titan Pressure Transmitter - TPTd			
Sensor technology	Piezo-resistive		
Communications	I2c, SPi		
Supply voltage	2.7 - 5.5V dc		
Pressure reference	Gauge (standard), Sealed Gauge, Absolute		
Pressure ranges	0.5, 1, 2, 5, 10, 20, 50, 100, 200, 400, 600 Bar		
Safe over pressure	1.5 times rated pressure		
Burst Pressure	3 times rated pressure		
Accuracy (NL&H)	$\leq \pm 0.35\%$ / $\leq \pm 0.25\%$ / $\leq \pm 0.10\%$ FS		
Response Time	Various Options, Consult Sales		
Ambient temperature	-20 °C to +85 °C		
Media temperature	-40 °C to +125 °C		
Storage temperature	-20 °C to +80 °C		
Temperature effects	Typical thermal zero and span coefficients, TZS: $\pm 0.02\%$ FS/°C, TSS: $< -0.015\%$ /°C		
Media wetted parts	303 Stainless Steel, Al ₂ O ₃ , Viton		
Permissible media	All fluids compatible with media wetted parts		
Electrical connection	M12 x 1, 4-pin male connector (mating cable sold separately) Cable Outlet with 0.25m screened PVC cable		
Pressure connection	G ¹ / ₄ " DIN 3852 male & female, ¹ / ₄ " NPT male, 7/16-20 UNF-2A male SAE#4 J514		
Environmental Protection	M12 connector	Gauge reference ≤ 50 bar: IP65	Absolute, Sealed Gauge reference or > 50 bar range: IP67
	Cable Outlet	IP65	



SensaCo Ltd.

Dimensional Drawings:

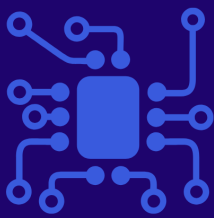
M12 Connector	Cable Outlet
	
	



SensaCo Ltd.

Part Numbering system

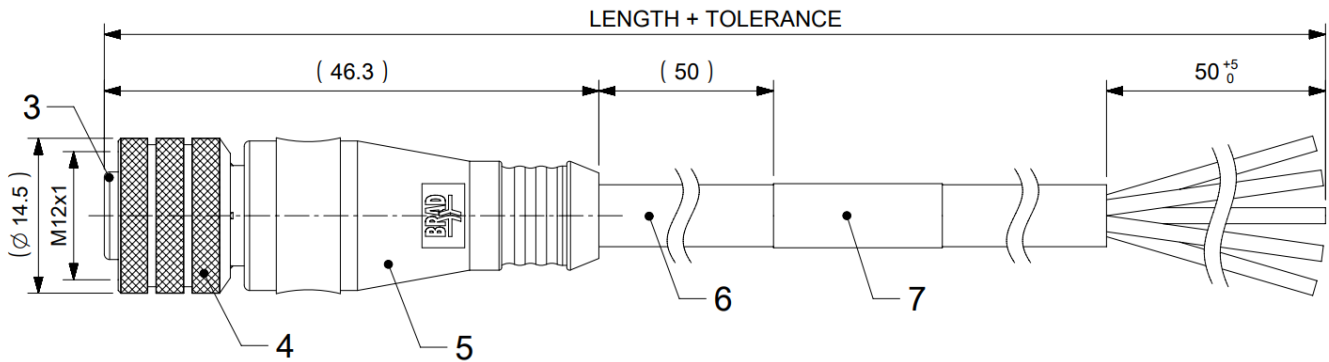
TPTd - Titan Pressure Transmitter	TPTd	-	X	X	-	X	X	-	X	X	-	X	X	X	X	X	-	X	X
Output Type																			
i2c	A																		
SPI	B																		
Accuracy Class																			
0.35%	A																		
0.25%	B																		
0.10%	C																		
Electrical Connection																			
Connector M12 x 1, 4-pin male				A															
Cable Outlet IP65				B															
Process Connection																			
G1/4" male DIN 3852						G													
G1/4" female DIN 3852						F													
1/4" NPT male						N													
7/16-20 UNF-2A male SAE#4 J514						U													
Housing Material																			
303 Stainless Steel						A													
316 Stainless Steel						B													
PVDF						C													
Seal Material																			
Viton								V											
(Drinking Water Approved) EPDM								E											
NBR								N											
FFKM (Chemraz)								C											
Pressure Range																			
0.5 Bar									0	5	0	0							
1 Bar									1	0	0	0							
2 Bar									2	0	0	0							
5 Bar									5	0	0	0							
10 Bar									1	0	0	1							
20 Bar									2	0	0	1							
50 Bar									5	0	0	1							
100 Bar									1	0	0	2							
200 Bar									2	0	0	2							
400 Bar									4	0	0	2							
600 Bar									6	0	0	2							
72 Psi (example)									P	0	7	2							
5000 Psi (example)									P	5	K	0							
Pressure Datum																			
Gauge																G			
Sealed Gauge																S			
Absolute																A			
Special Options																			
None																	0	0	



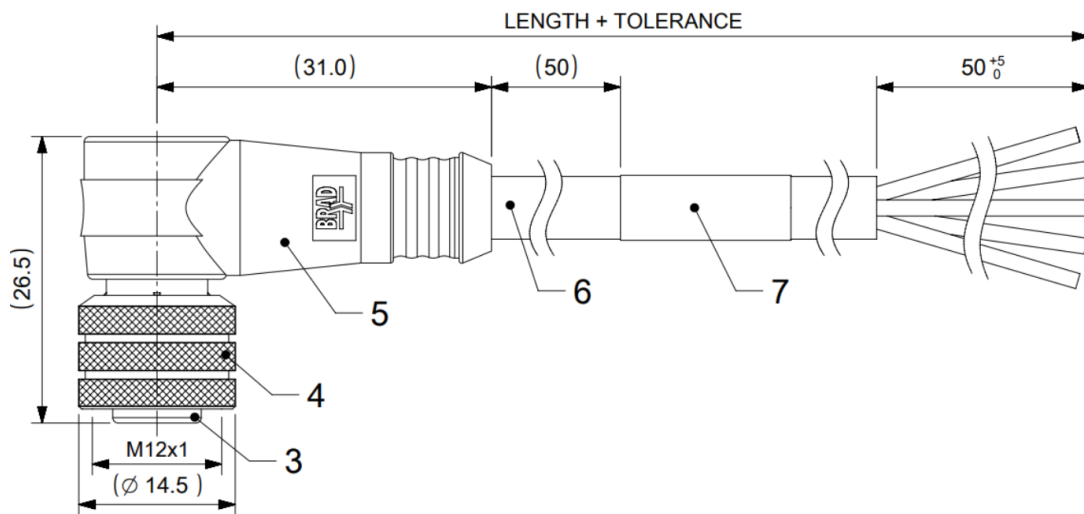
SensaCo Ltd.

Accessories:

Mating M12 cable cordset - Straight



Mating M12 cable cordset - Right-Angled



Temperature Reducing Adaptor

