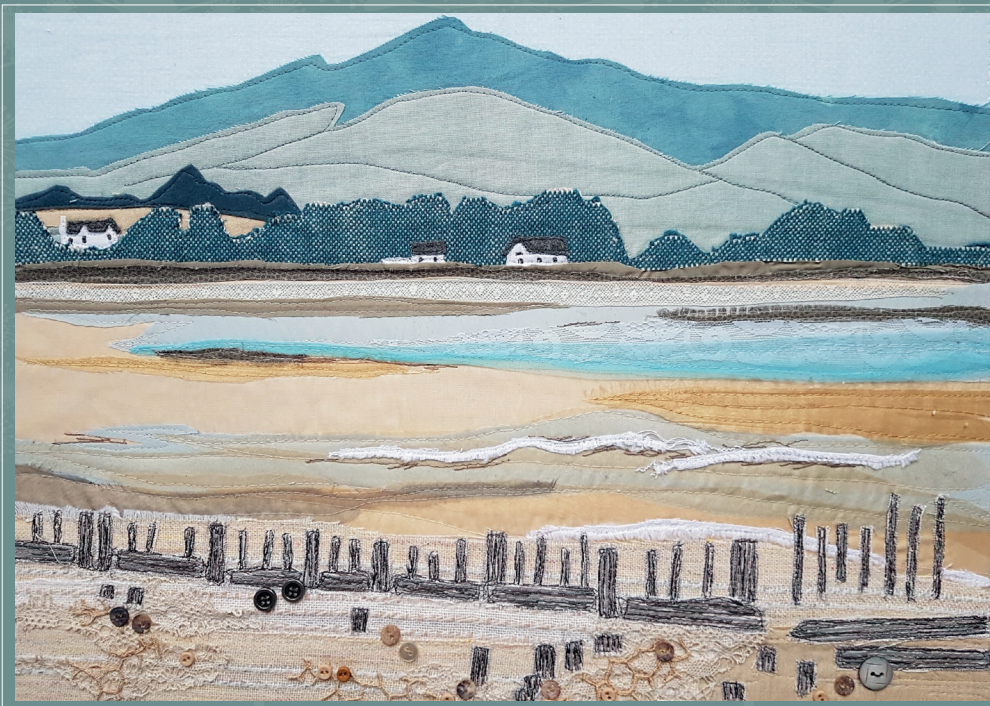


Catalogue



Alison Whateley Design

Textile art for you and your home

Contents

3

Abstract Coastal Range

4

British Flower Range

5

Inspirational Quote Range

6

Seascapes Range

7

Seedheads and Grasses Range

8

Seedheads, Grasses and Flowers Range

9

Limited Edition Range

11

Open Edition Range



Abstract Coastal Range



AWD235



AWD236



AWD237



AWD238



AWD239



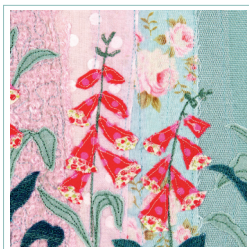
AWD240



Alison Whateley Design

Textile art for you and your home

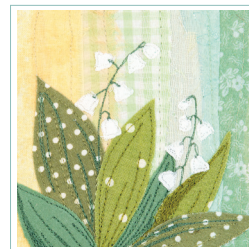
British Flower Range



AWD213



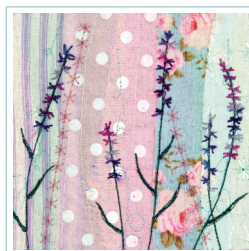
AWD214



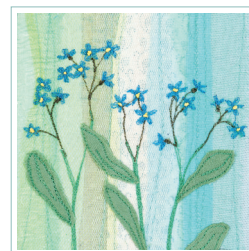
AWD215



AWD216



AWD217



AWD218



Alison Whateley Design

Textile art for you and your home

Inspirational Quote Range



AWD241



AWD242



AWD243



AWD244



AWD245



AWD246



Alison Whateley Design

Textile art for you and your home

Seascapes Range



AWD221



AWD222



AWD223



AWD224



AWD225



AWD226



Alison Whateley Design

Textile art for you and your home

Seedheads and Grasses Range



AWD201



AWD202



AWD203



AWD204



AWD205



AWD206



Alison Whateley Design

Textile art for you and your home

Seedheads, Grasses and Flowers Range



AWD227



AWD228



AWD229



AWD230



AWD231



AWD232



Alison Whateley Design

Textile art for you and your home

Limited Edition Prints



The Golden Moor



Bluebell



Alison Whateley Design

Textile art for you and your home

Limited Edition Prints



The Exe Estuary, Dawlish Warren



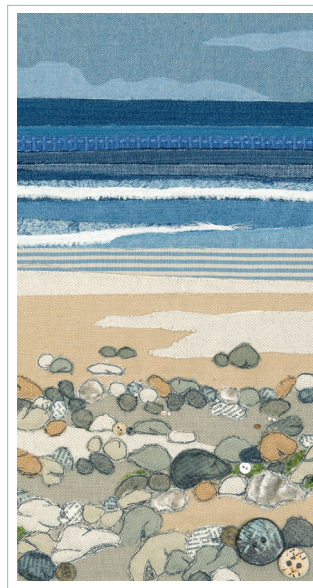
Alison Whateley Design

Textile art for you and your home

Open Edition Prints



I See the Sea

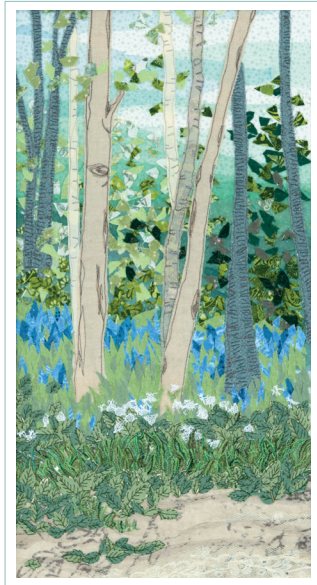


Pebbles


Alison Whateley Design

Textile art for you and your home

Open Edition Prints



The Bluebell Wood



Meadow Magic



Alison Whateley Design

Textile art for you and your home

Open Edition Prints



Down on the beach



Fields of Gold



Singing the Blues



Alison Whateley Design

Textile art for you and your home

Open Edition Prints



Golden Days



Summer's End



Alison Whateley Design

Textile art for you and your home



Alison Whateley Design

Textile art for you and your home

t: 07816 172 292

e: info@alisonwhateleydesign.co.uk

w: www.alisonwhateleydesign.co.uk

https://www.etsy.com/shop/AlisonWhateley?ref=hdr_shop_menu

I am a Devon based textile artist creating contemporary botanical art, landscapes and seascapes, all inspired by the natural world around me.

Working loosely from photographs, but often directly from my imagination, each piece of my work evolves as it is created. I prefer not to use a sketchbook, instead allowing my creativity to guide me as each piece develops. Colour and texture are big influences for me and where possible I prefer to source up cycled textiles for their variety and individuality. It is important to me that these materials can be re purposed and appreciated in a totally different way for years to come.

I have also made the decision to use textiles just as I find them. So I don't dye fabrics or paint onto them at all.

As well as my original artwork my range also includes digital and giclee fine art prints, greeting cards and textile art kits, all of which can be found in my Etsy shop

https://www.etsy.com/shop/AlisonWhateley?ref=hdr_shop_menu

I also welcome commissions of all sizes, and will work with you to get the result you are looking for.

I get great pleasure from passing on my knowledge and skills to others, and run regular workshops close to my home, as well as providing talks and day workshops to groups such as the WI and embroiderers Guild.



Alison Whateley Design

Textile art for you and your home

t: 07816 172 292

e: info@alisonwhateleydesign.co.uk

w: www.alisonwhateleydesign.co.uk

https://www.etsy.com/shop/AlisonWhateley?ref=hdr_shop_menu

