

# STAY SAFE AROUND DOGS AT THE PARK

## PROTECT YOUR DOG



thefamilydog®

## PROTECT YOUR KIDS

### ★ Make sure your dog's collar can't come off

IF YOU KNOW YOUR DOG WILL BARK/GROWL AT OTHERS AT THE PARK:

- \* Have them wear a WELL-FITTING harness
- \* ask yourself - IS THE PARK IS THE RIGHT PLACE FOR YOUR DOG?



### ★ GIVE OTHER DOGS AND PEOPLE PLENTY OF SPACE

MOST DOGS NEED MORE PERSONAL SPACE THAN HUMANS TO FEEL COMFORTABLE.

BE KIND (AND SAFE!)

RESPECT THE FORCEFIELD NO MATTER HOW THE DOG FEELS



### ★ DON'T LET YOUR DOG TO RUN UP ON OTHER DOGS

(MOST DON'T LIKE IT... EVEN IF YOUR DOG IS FRIENDLY!)



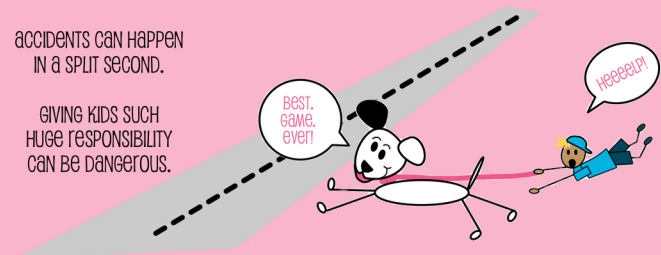
IF YOU SEE ANOTHER DOG, CALL YOURS - AND PUT ON THE LEASH IMMEDIATELY.

IF YOUR DOG DOESN'T COME WHEN CALLED, IT'S SAFER TO ALWAYS KEEP THEM ON LEASH.

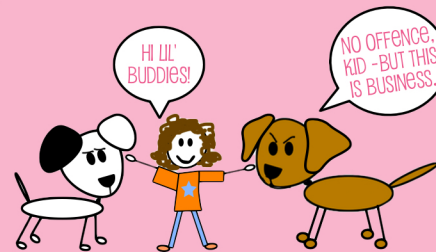
### ★ ONLY ADULTS & KIDS 14+ SHOULD WALK DOGS ALONE

ACCIDENTS CAN HAPPEN IN A SPLIT SECOND.

GIVING KIDS SUCH HUGE RESPONSIBILITY CAN BE DANGEROUS.



### ★ KEEP KIDS OUT OF DOGGIE GREETINGS



DOGGIE GREETINGS CAN BE UNPREDICTABLE. ALWAYS ALLOW DOGS CHOICE, SPACE AND A LOOSE LEASH.

ALLOWING KIDS TO GET IN THE MIDDLE OF THE ACTION IS VERY RISKY.

### ★ TEACH YOUR KIDS TO ASK THE DOG BEFORE PETTING

#### Pat

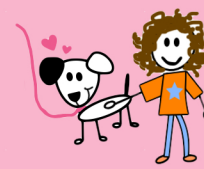
YOUR LEG TO INVITE THE DOG.



DOG APPROACHES = OK TO PET  
NO APPROACH = LEAVE THE DOG BE

#### PET

DOG ON THE BODY (NOT THE HEAD).



KEEP KID FACES AWAY FROM DOGGIE FACES

#### Pause

THE PETTING AFTER 3 SECONDS. DOES THE DOG ASK FOR MORE?



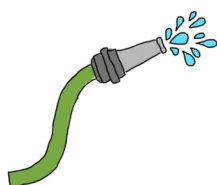
DOG STAYS = MORE PETTING  
DOG WALKS AWAY = ALL DONE!

## IF A DOG FIGHT BREAKS OUT

always  
KEEP HANDS OUT



SPRAY WATER



or

COVER DOG WITH COAT/BLANKET



or

USE A CITRONELLA SPRAY

