

DORMER DETAIL

SCALE: 1/4"=1'-0"

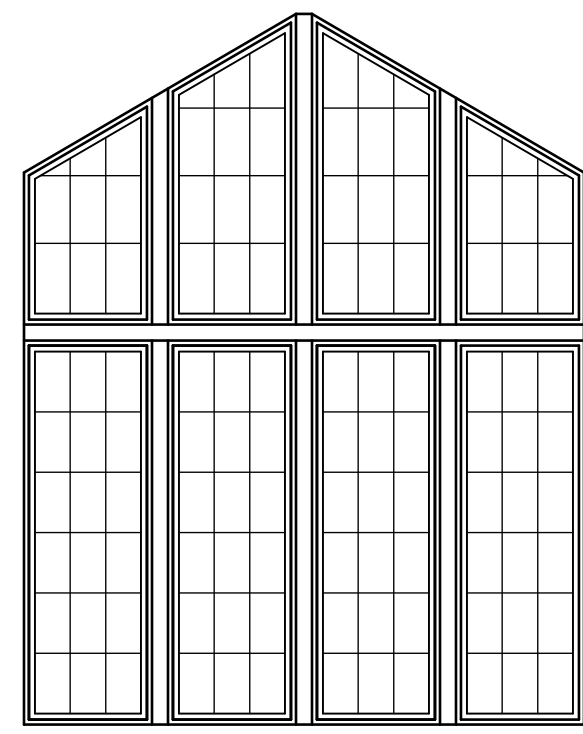


FRONT ELEVATION

SCALE: 1/4"=1'-0"

AREA CALCULATIONS

HEATED (SQ. FT.)		UNHEATED (SQ. FT.)	
1ST FLOOR:	3386	GARAGE:	877
2ND FLOOR:	2178	SCR. PORCH:	579
REC ROOM:	425	PORCH:	676
		STOOP:	77
TOTAL:	5989	TOTAL:	2209
(HEATED)		(UNHEATED)	
OVERALL DIMENSION		UNFINISHED (SQ. FT.)	
WIDTH:	90'-4"	STORAGE:	267
DEPTH:	81'-8"		



REAR ELEVATION

SCALE: 1/4"=1'-0"



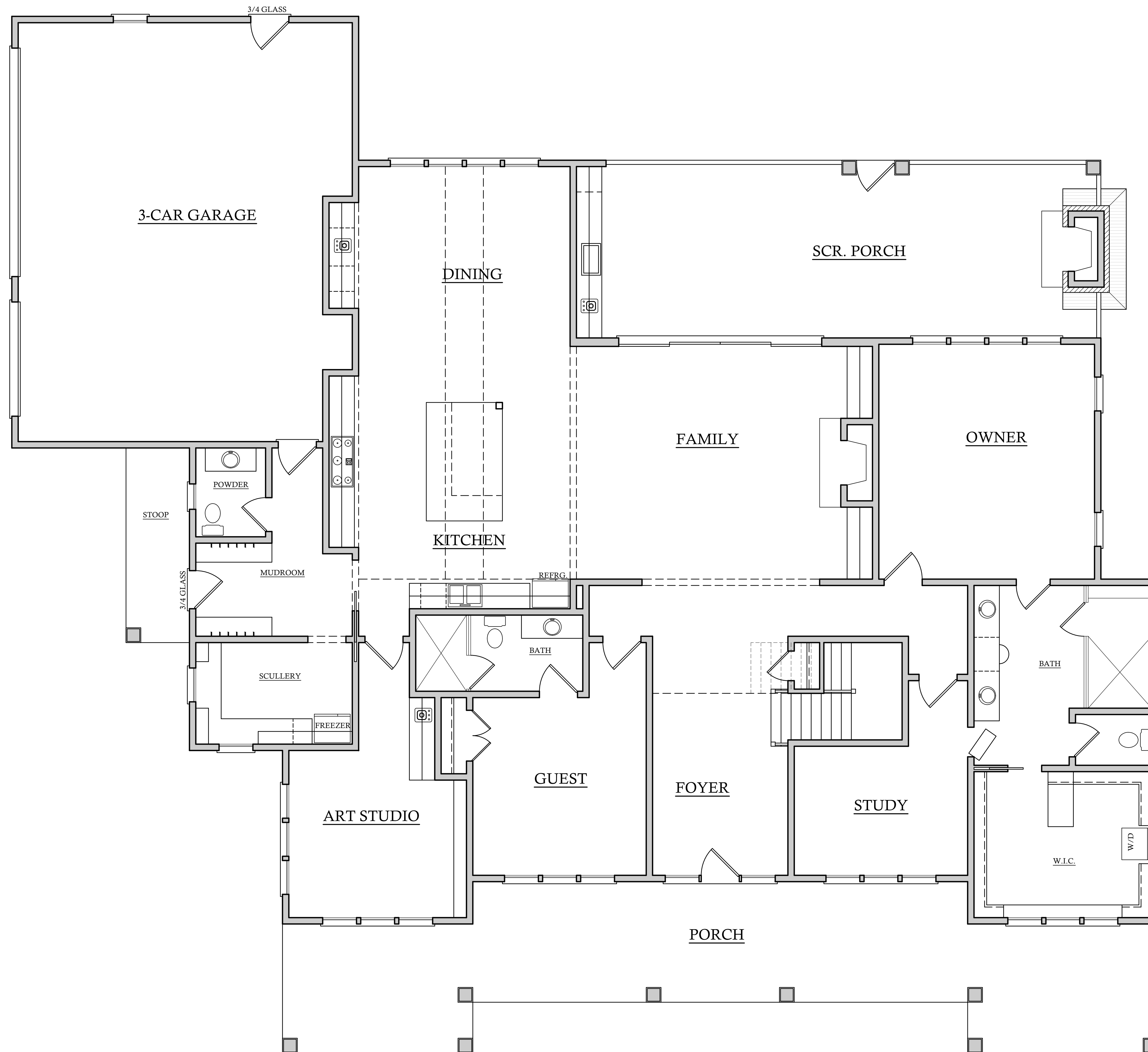
LEFT ELEVATION

SCALE: 1/8"=1'-0"

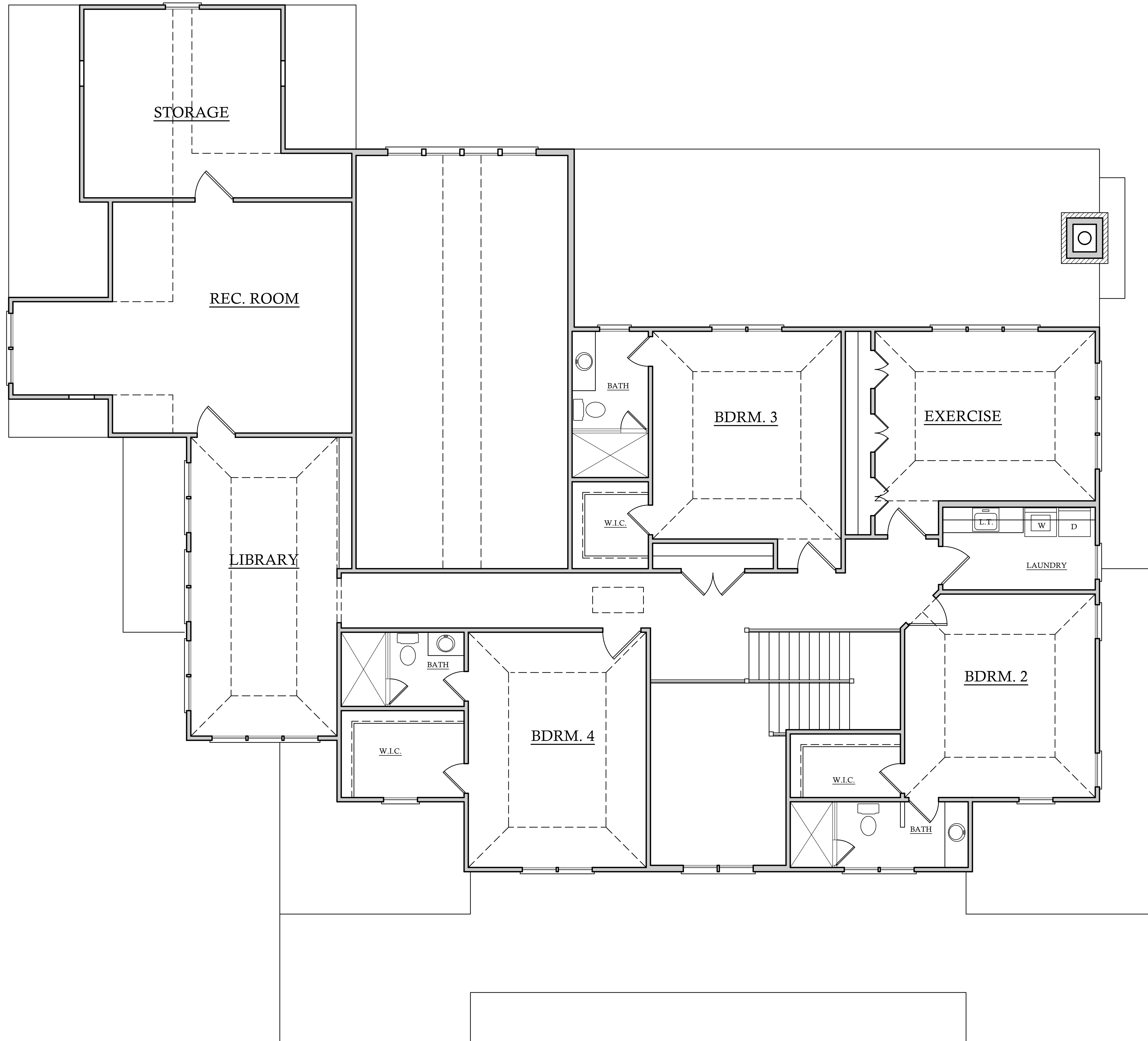


RIGHT ELEVATION

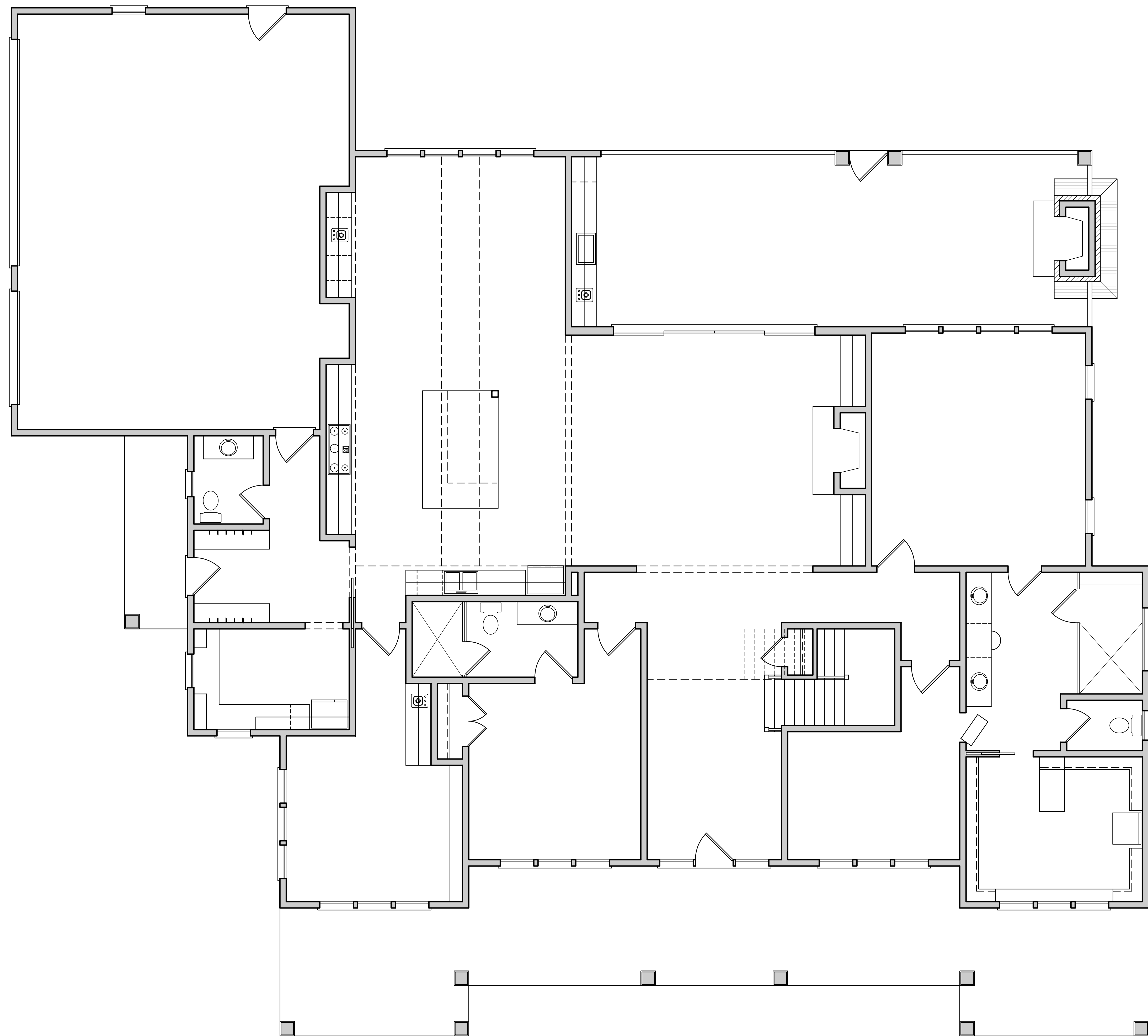
SCALE: 1/8"=1'-0"

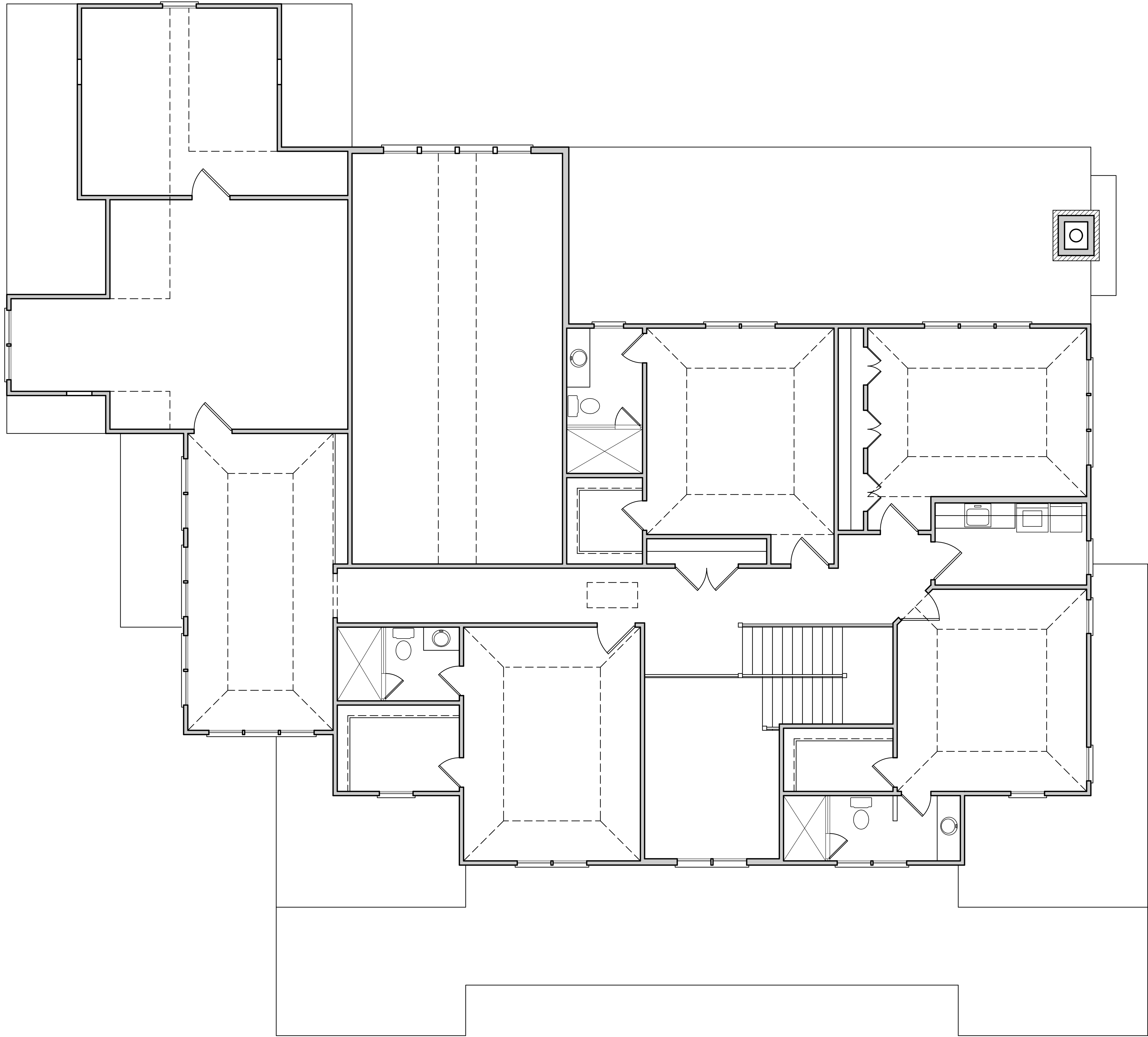


FIRST FLOOR PLAN SCALE: 1/4"=1'-0"
 11'-0" CLG. HGT. U.N.O.
 SET WINDOWS @ 9'-0" U.N.O.



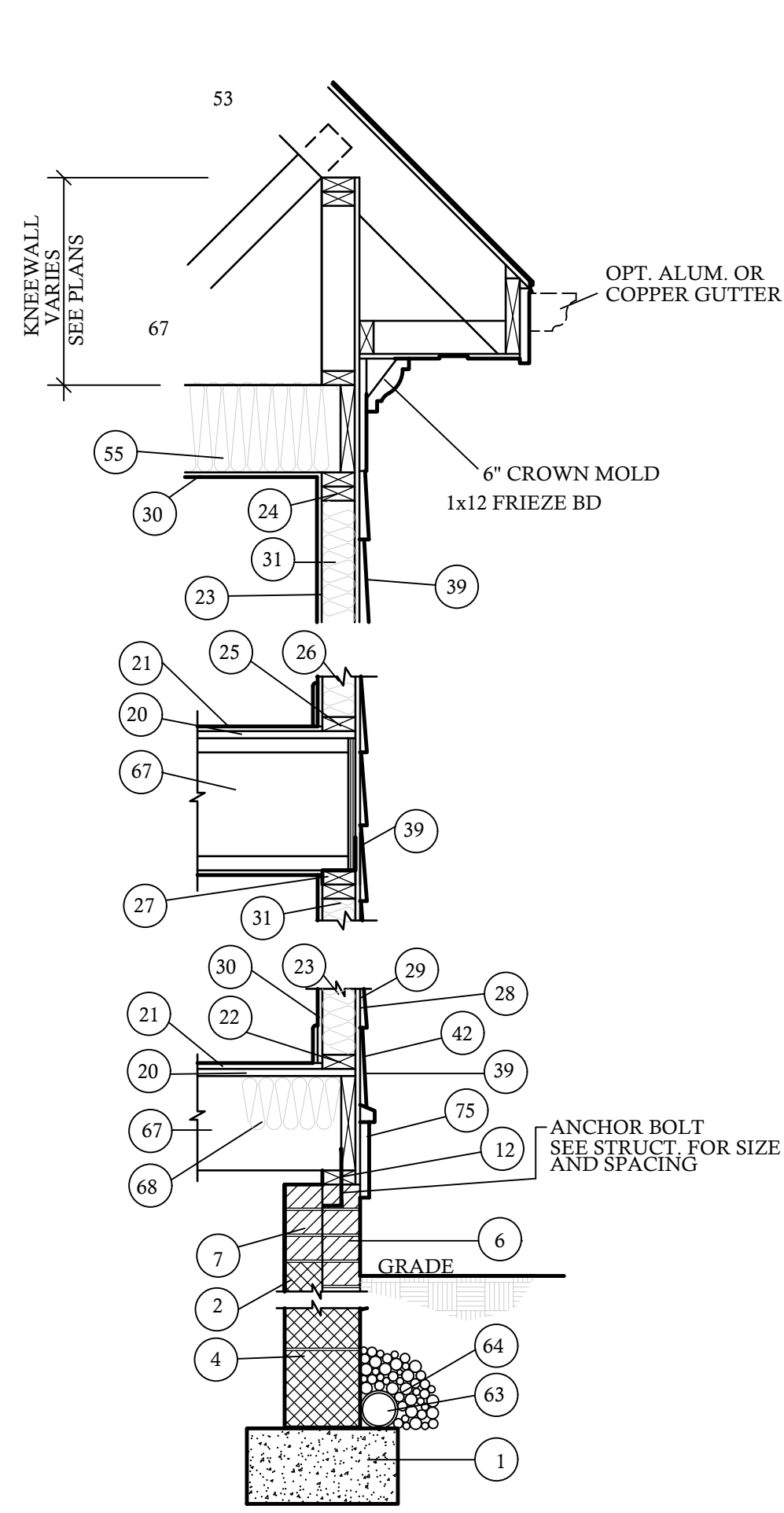
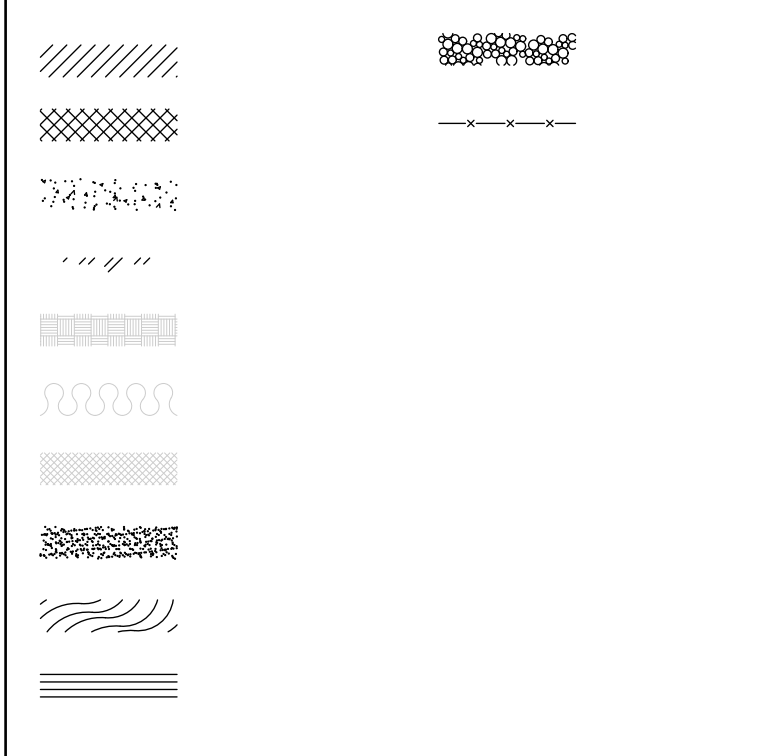
SECOND FLOOR PLAN SCALE: 1/4"=1'-0"
 10'-0" CLG. HGT. U.N.O.
 SET WINDOWS @ 8'-0" U.N.O.



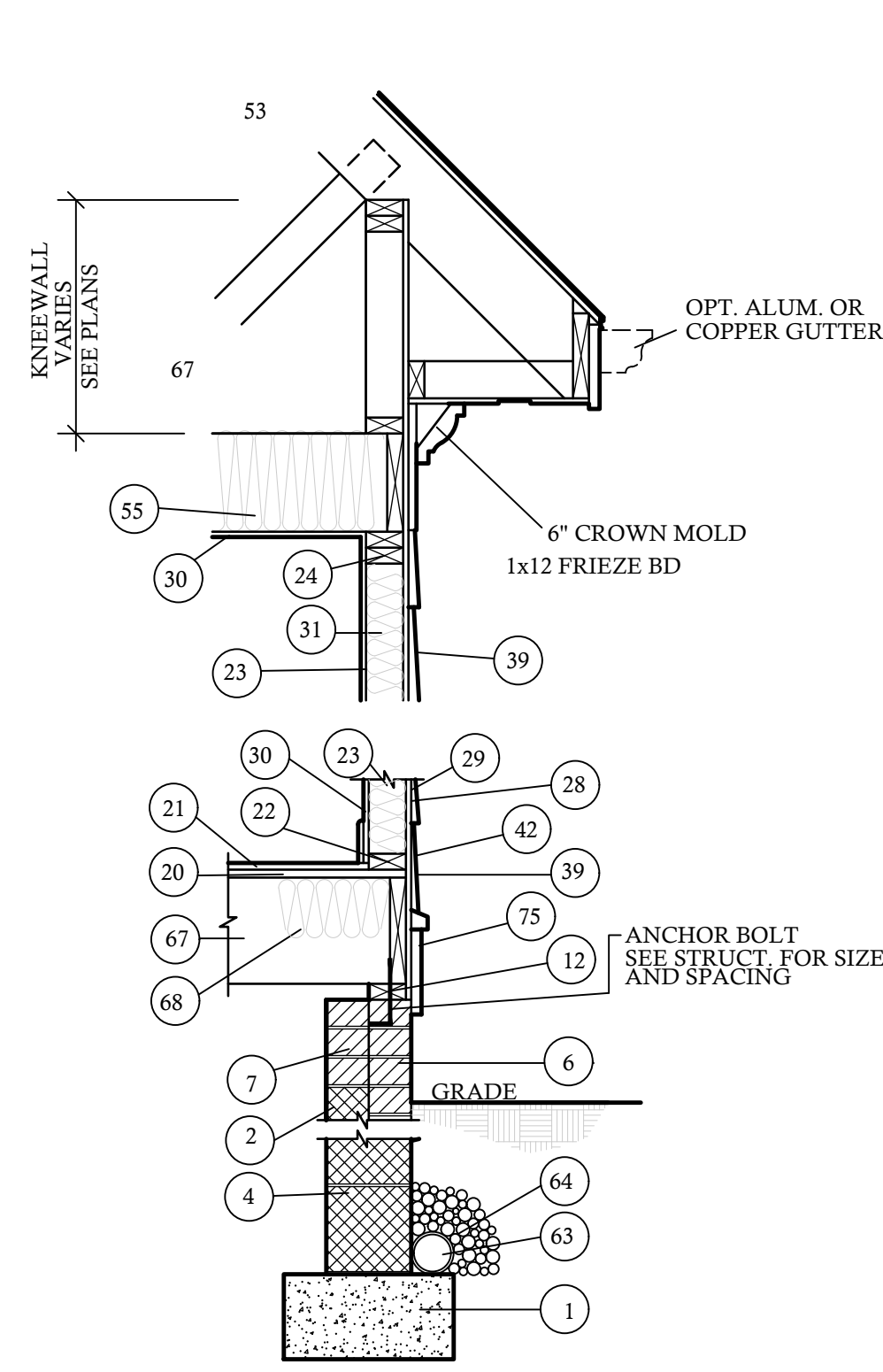


MATERIAL REFERENCE

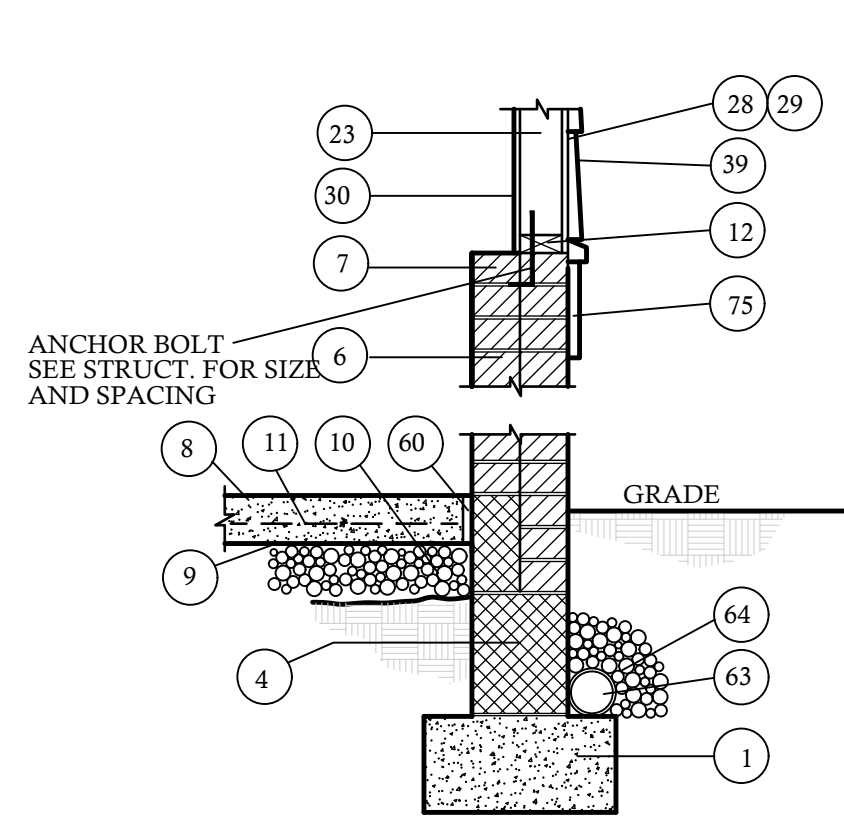
1. CONT. POURED CONC. FOOTING
2. 4 X 8 X 16 C.M.U.
3. 6 X 8 X 16 C.M.U.
4. 8 X 8 X 16 C.M.U.
5. 12 X 8 X 16 C.M.U.
6. BRICK
7. SOLID MASONRY CAP
8. 4" CONCRETE SLAB
9. 4 MIL VAPOR BARRIER
10. 4" STONE BASE
11. 6" X 6" 10-10 W.W.M.
12. 2 X 4 TREATED SILL PLATE
13. 2 X 6 TREATED SILL PLATE
14. 2 X 4 JOIST
15. 2 X 6 BAND
16. 2 X 8 JOIST
17. 2 X 8 BAND
18. 2 X 10 JOIST
19. 2 X 10 BAND
20. A.P.A. RATED SUB-FLOOR
21. A.P.A. RATED UNDERLAYMENT
22. 2 X 4 SOLE PLATE
23. 2 X 4 STUD WALL
24. DBL 2 X 4 TOP PLATE
25. 2 X 6 SOLE PLATE
26. 2 X 6 STUD WALL
27. DBL 2 X 6 TOP PLATE
28. EXTERIOR SHEATHING
29. SHEATHING PAPER
30. 1/2" DRY WALL
31. R-15 BATT INSULATION MIN.
32. BRICK VENEER
33. WALL TIE
34. WEEP HOLES @ 16" O.C. HORZ.
35. FLASHING AS REQ. PER CODE
36. SELF FURRING GALV METAL LATH
37. METAL BEAD
38. STUCCO PLASTER
39. SIDING AS SPECIFIED
40. TPL 2 X BLOCKING
41. WOOD FILLER
42. 1 X FRIEZE BOARD
43. NAILER
44. LOOKOUT
45. 3/8" EXT PLYWOOD SOFFIT
46. SOFFIT VENT
47. SUB FASCIA
48. 1 X FASCIA
49. METAL DRIP STRIP
50. SHINGLES AS SPECIFIED
51. 15 LB FELT PAPER
52. A.P.A. RATED SHEATHING
53. 2 X 8 RAFTER
54. 2 X 6 RAFTER
55. R-38 BATT INSULATION MIN.
56. C.M.U. PIER
57. TREATED 2 X 6 SHIM PLATE
58. ORDER SIZE PER PLAN
59. 2 X 2 LINGER BOARD
60. 1/2" EXPANSION JOINT
61. 1 1/2" RIGID INSULATION (R 5.0 MIN)
62. WATERPROOFING
63. 4" PERFORATED DRAIN TILE (SLOPE TO DRAIN)
64. CRUSHER STONE W/ INFILTRATION BARRIER ABOVE
65. CONC. WASH
66. 2 X 4 RAFTER TIE BACKS PER ENG SPECS. AT MIN EVERY THIRD RAFTER
67. SEE STRUCTURAL SHEETS FOR JOIST DIRECTION & SIZES
68. R-19 BATT INSULATION (MIN.)
69. POURED CONC. FND. WALL
70. OPT. TRIM SEE BLDG.
71. STONE VENEER
72. TRUSSES PER MANUFACTURER
73. STUCCO DRIP CAP
74. STUCCO ON CMU OR CONCRETE WALL
75. BAND W/ DRIP CAP
76. SOFFIT BED MOLD TRIM
77. 2 X 8 TREATED SILL PLATE
78. 2 X 12 JOIST
79. 2 X 12 BAND
80. 66 MIL. OP THRU WALL FLASHING



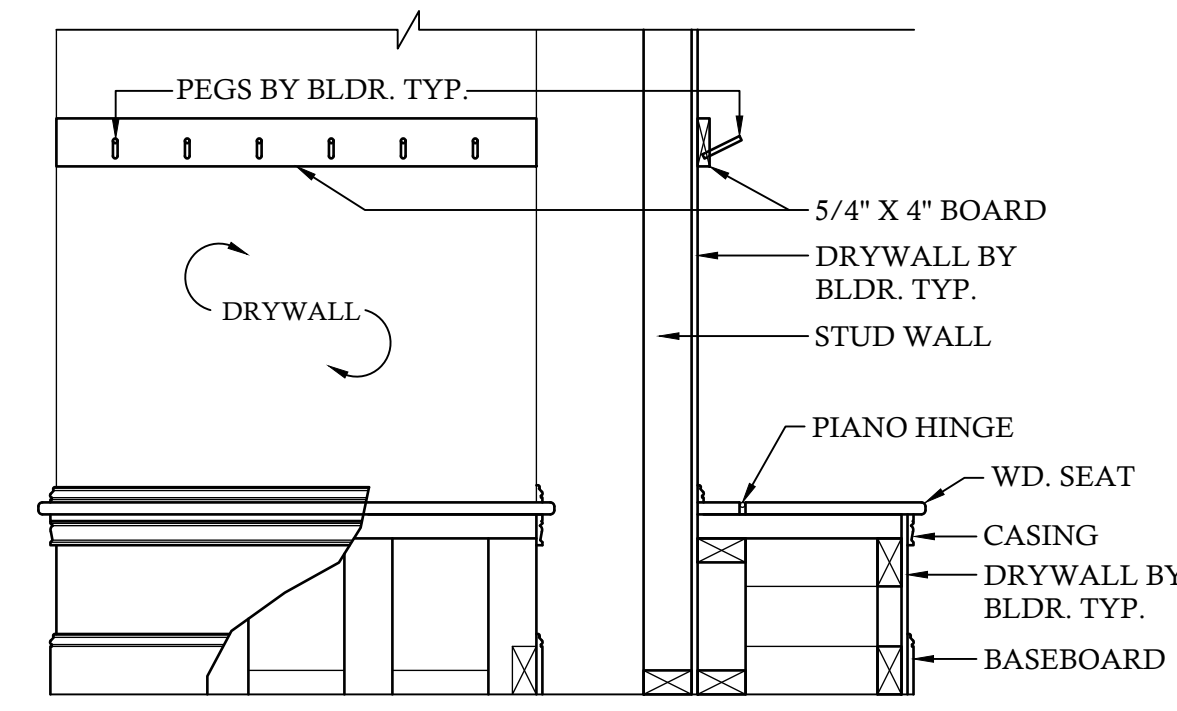
1 TWO STORY WALL W/ SIDING @ 3/4"=1'-0" DESIGNED FOR 115 MPH WINDS



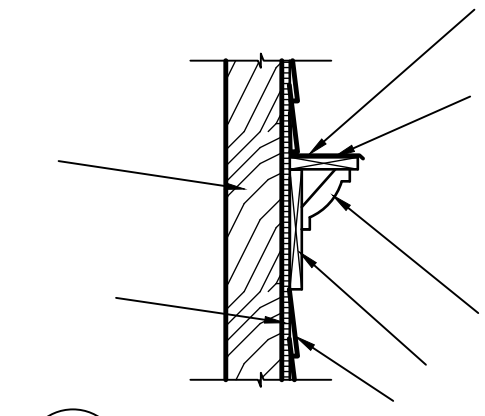
2 ONE STORY WALL W/ SIDING @ 3/4"=1'-0" DESIGNED FOR 115 MPH WINDS



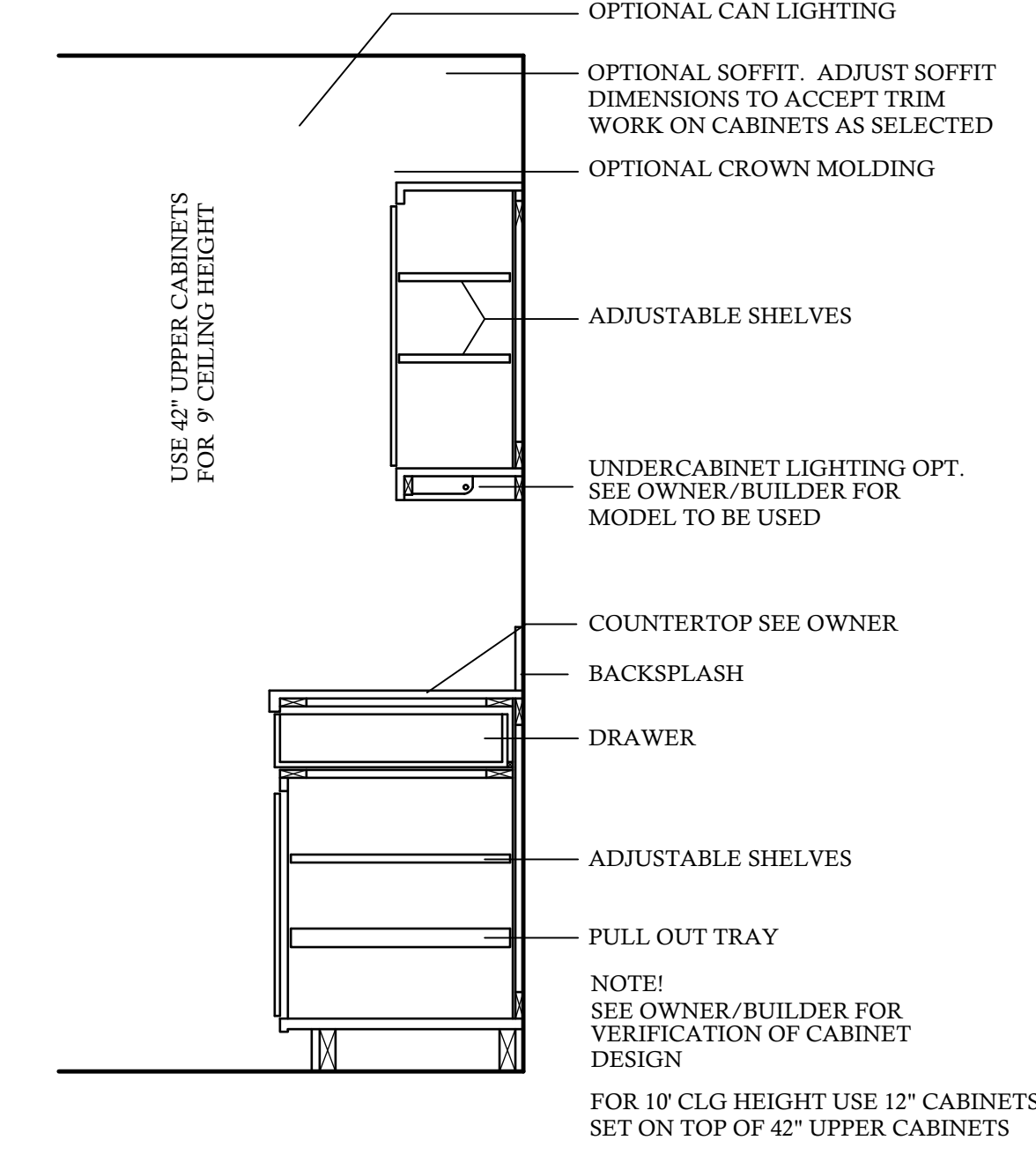
3 GARAGE WALL W/ SIDING @ 3/4"=1'-0" DESIGNED FOR 115 MPH



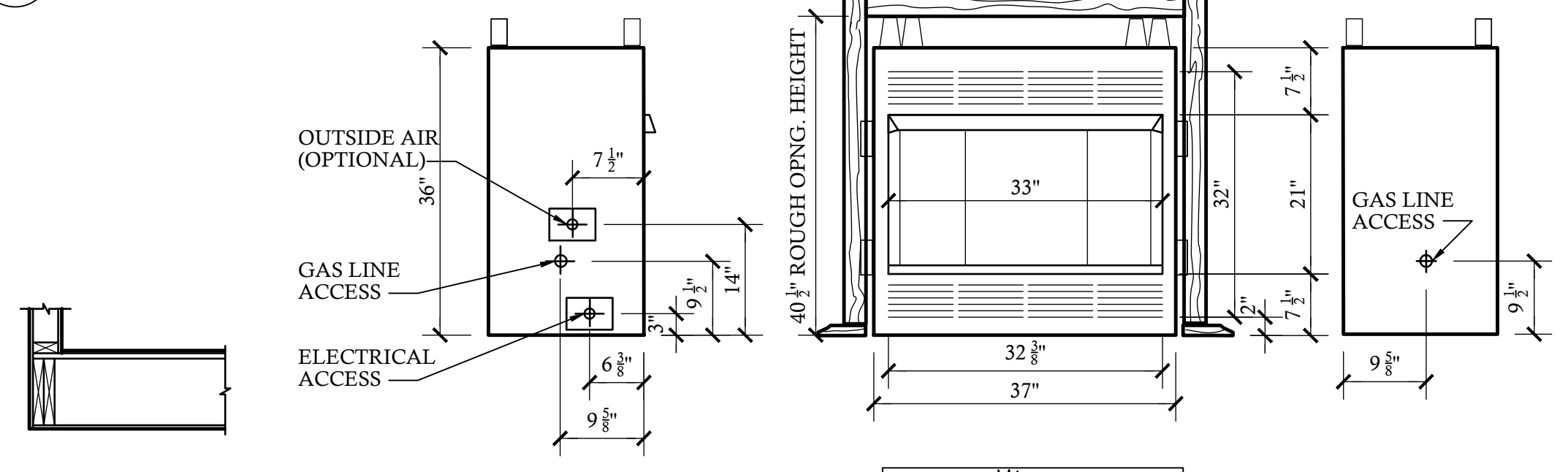
5 TYP. BENCH & PEGS SECTION @ 3/4"=1'-0"



10 WINDOW HEAD DETAIL @ 1"=1'-0"

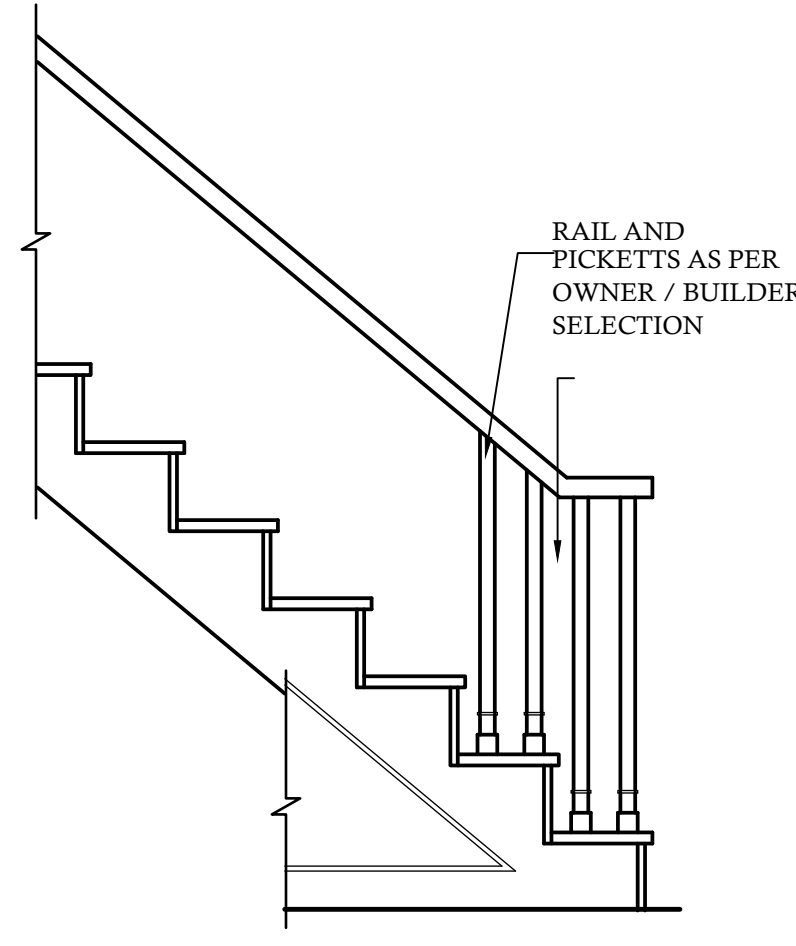


6 TYP. KITCHEN CABINET SECTION @ 3/4"=1'-0"

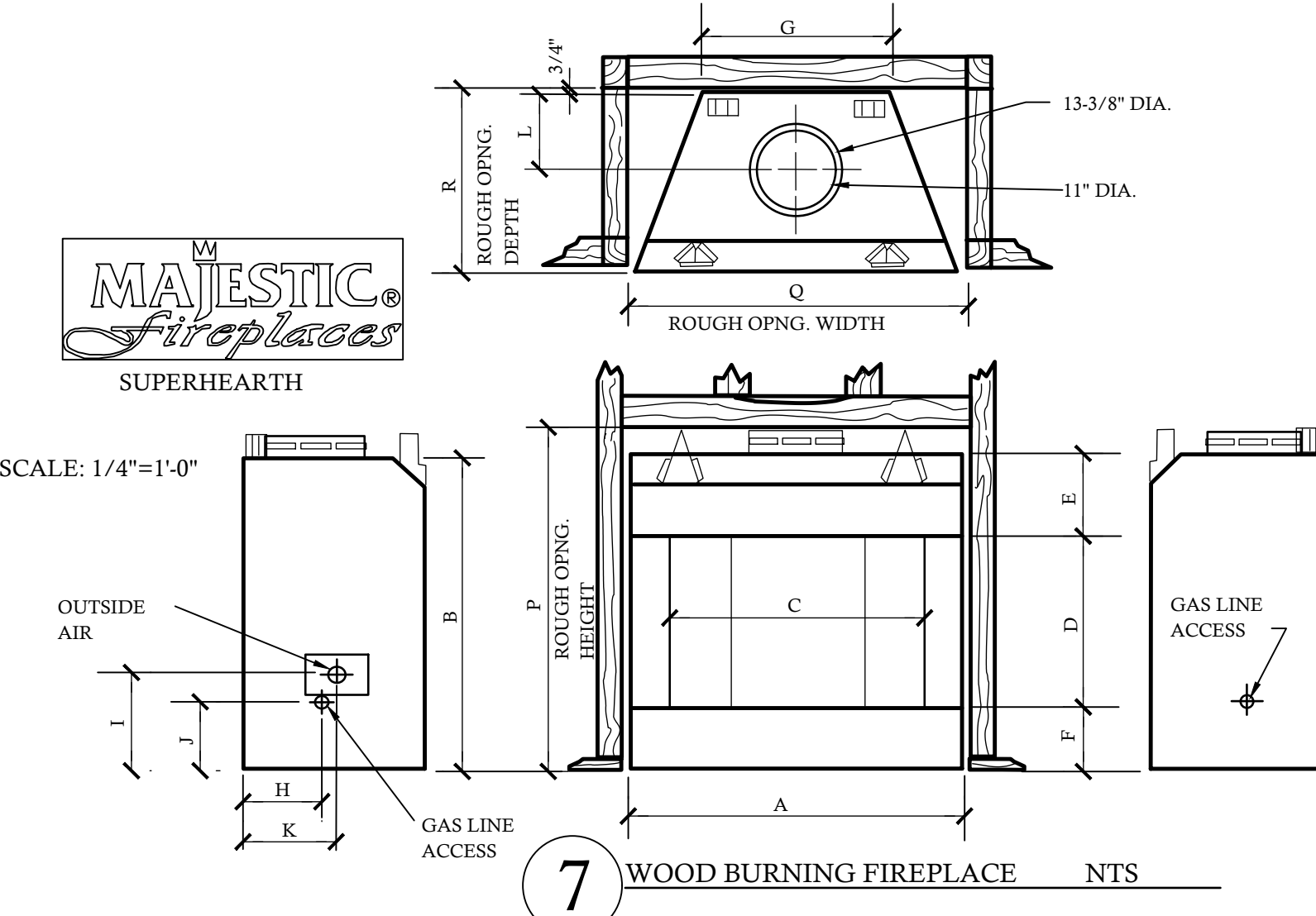


4 VENTLESS FIREPLACE NTS

NOTE - VERIFY W/ MANUF. UNIT MODEL NO. & DIMENSIONS REQUIRED FOR FRAMING AROUND FIREPLACE UNIT PRIOR TO CONSTRUCTION



8 TYP. STAIR DETAIL @ 3/4"=1'-0"

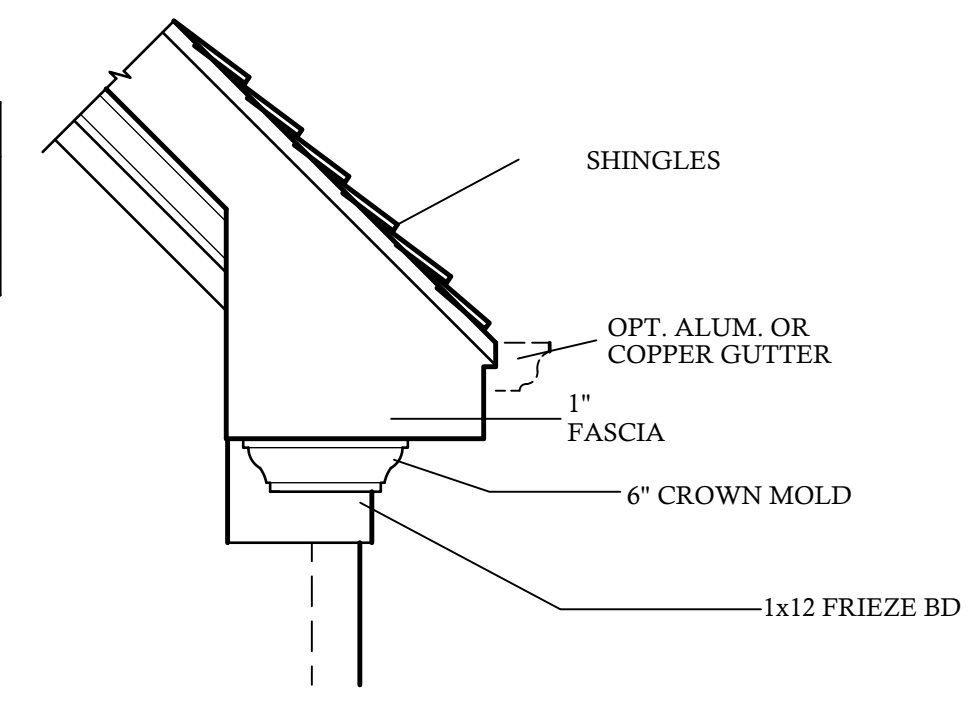


7 WOOD BURNING FIREPLACE NTS

FIREPLACE DIMENSIONS

	A	B	C	D	E	F	G	H	I	J	K	L	M	N	O	P	Q	R
SHR36	46-1/4"	44"	36"	24"	12-1/2"	7-7/16"	29"	15-5/8"	13-3/4"	7-3/4"	14-1/2"	10-3/8"	81-7/8"	57-15/16"	41-9/16"	48-1/4"	47-3/4"	26-3/4"
SHR42A	52-1/4"	48-1/8"	42"	28-1/8"	12-1/4"	7-7/16"	32-1/2"	19-1/4"	14-1/4"	9"	10-5/32"	10-1/2"	92-1/8"	65-1/8"	46-1/8"	54-1/4"	53-3/4"	29-1/4"
SHR48	58-1/4"	48-1/2"	48"	28-1/2"	12-1/2"	7-7/16"	41"	15-5/8"	13-3/4"	7-3/4"	14-1/2"	10-3/8"	93-7/8"	66-3/8"	47-9/16"	53"	59-3/4"	26-3/4"

NOTE - VERIFY W/ MANUF. UNIT MODEL NO. & DIMENSIONS REQUIRED FOR FRAMING AROUND FIREPLACE UNIT PRIOR TO CONSTRUCTION



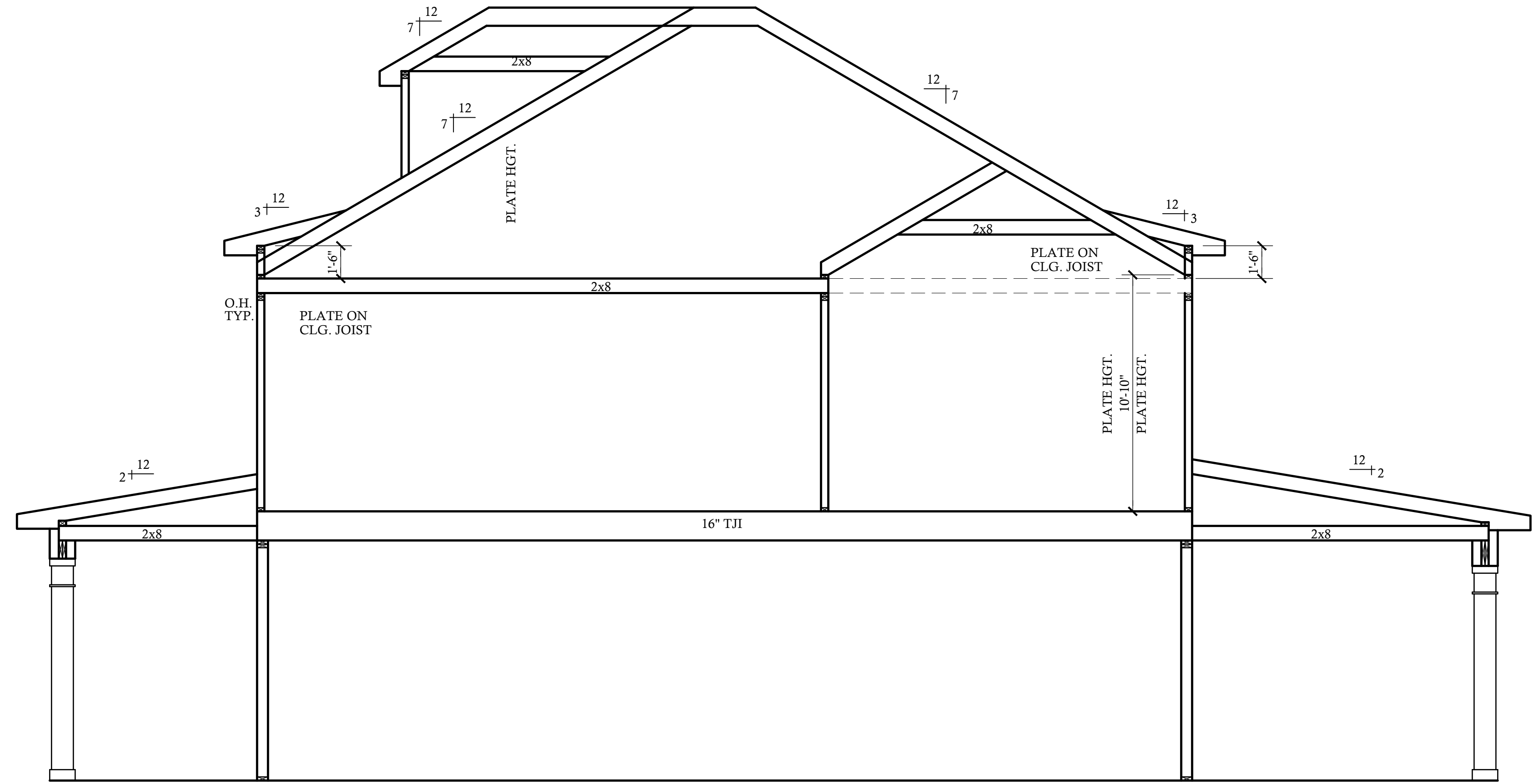
9 BOXING DETAIL @ 3/4"=1'-0" PROPERTY OF DESIGN TECH INC.

FOUNDATION VENT PLAN

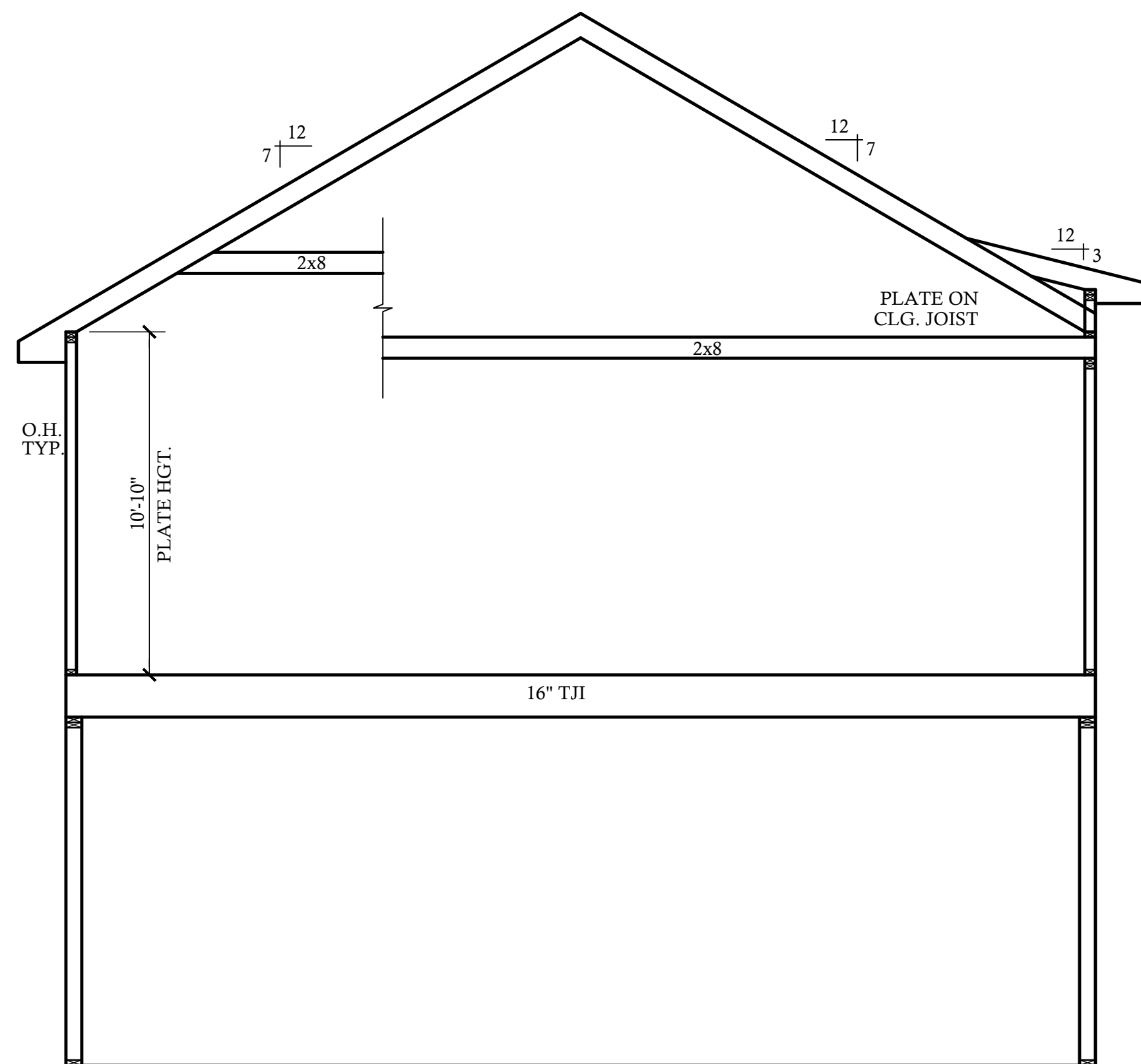
SCALE: 1/8"=1'-0"

- VENT LOCATIONS ARE TO BE VERIFIED PRIOR TO CONSTRUCTION W/ BUILDER BASED ON SECTION R-408 IN THE 2018 NCR.
- CRAWL SPACE TO HAVE A MIN. OF 24" OF CLEAR SPACE ABOVE GRADE.
- A MIN. OF 36" OF CLEAR SPACE ABOVE GRADE IS NEEDED WHEN HVAC UNIT IS LOCATED IN CRAWL, PROVIDE A CLEAR PATH FROM ACCESS TO THE HVAC UNIT.

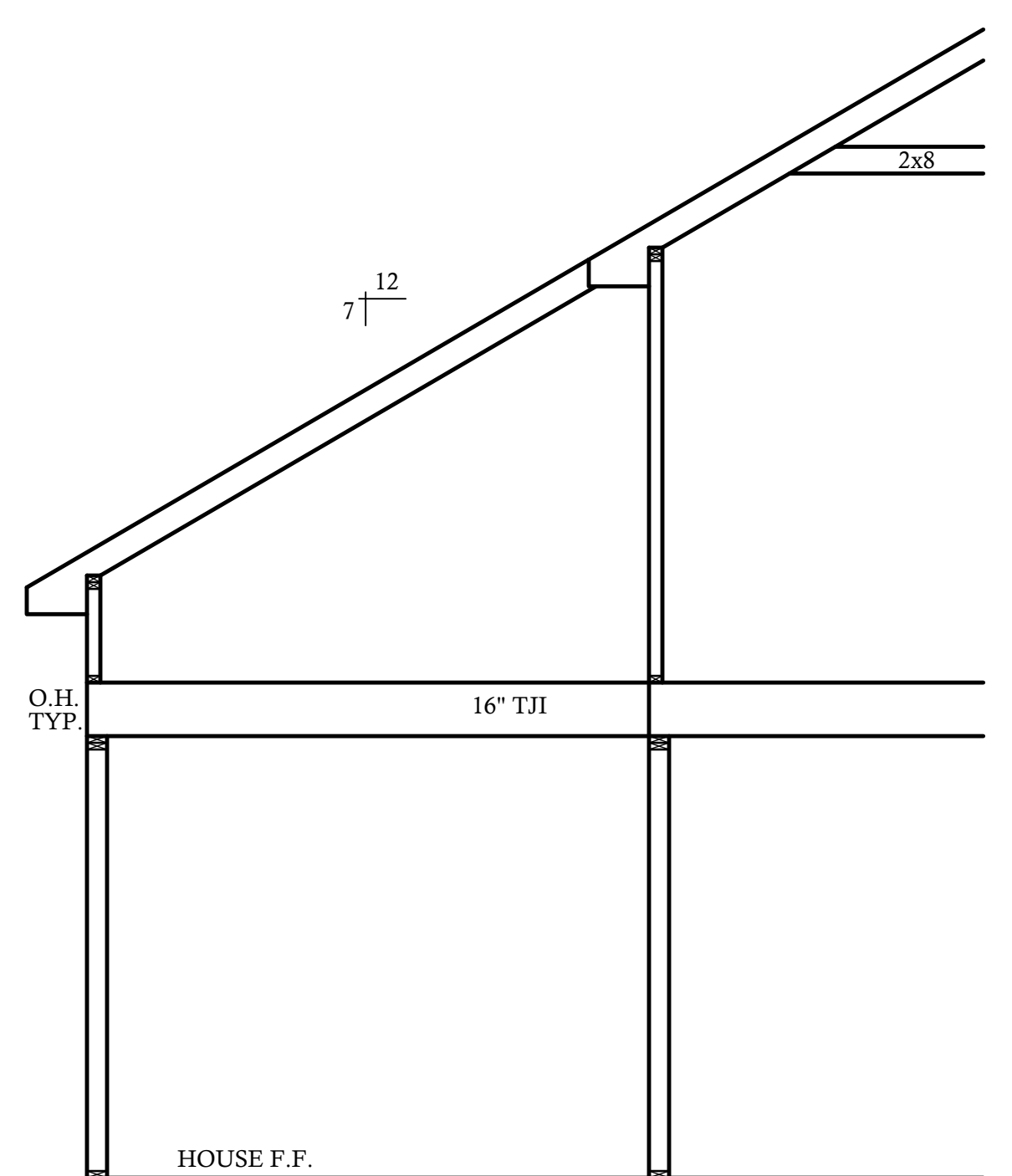
ROOF FRAMING PLAN



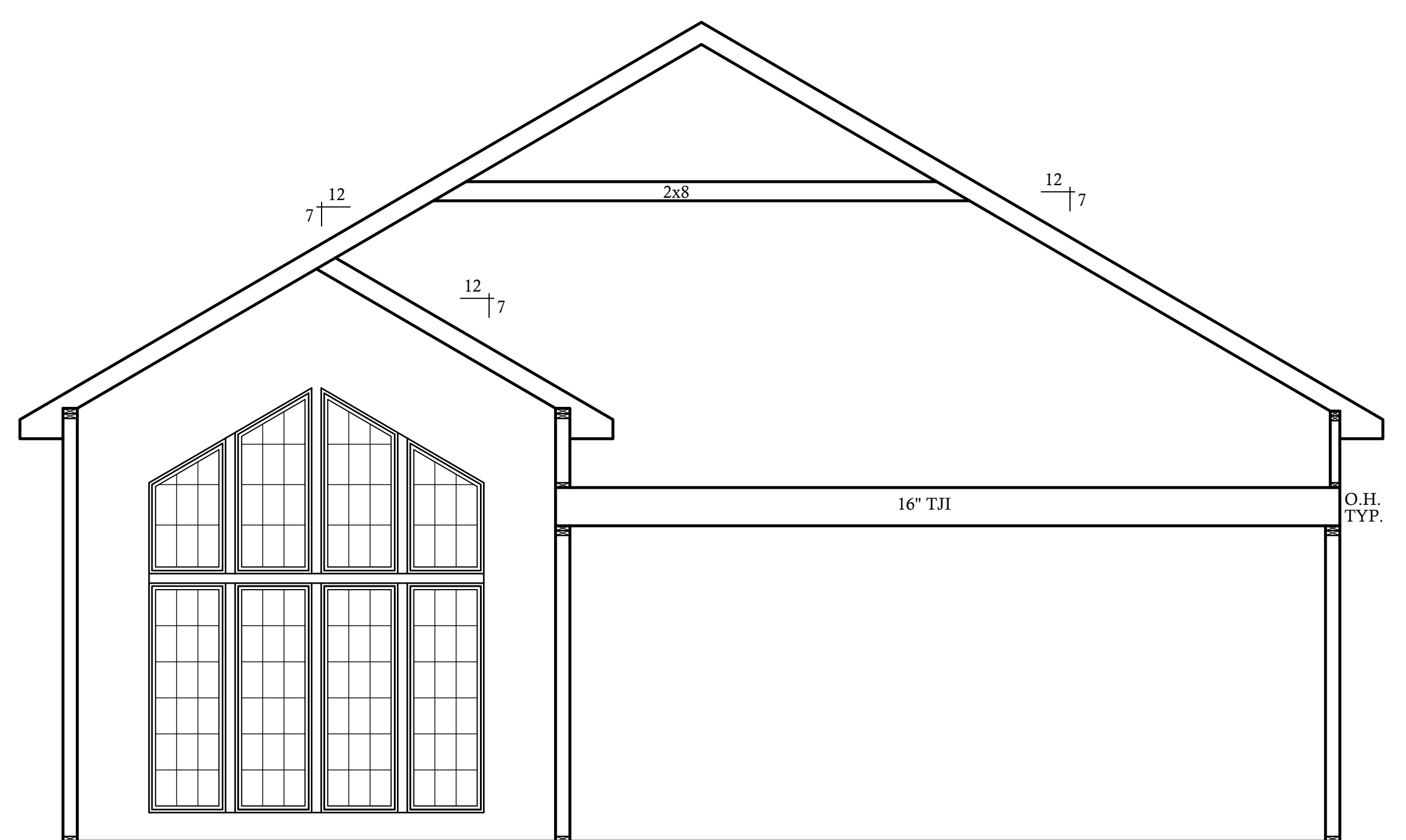
A BUILDING SECTION SCALE: 1/4"=1'-0"



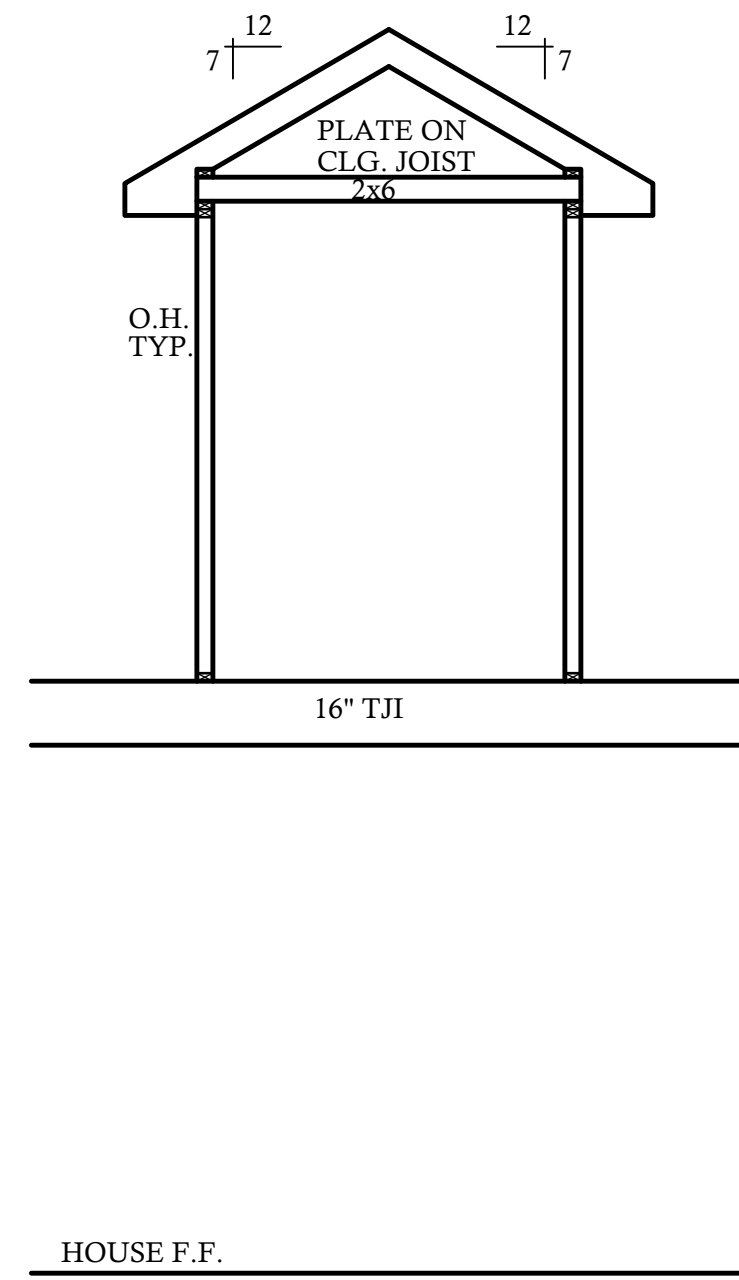
B BUILDING SECTION SCALE: 1/4"=1'-0"



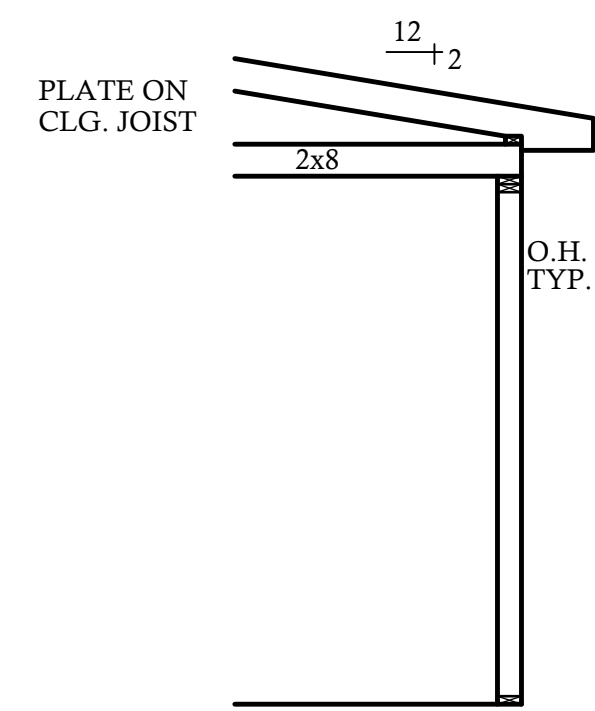
C BUILDING SECTION SCALE: 1/4"=1'-0"



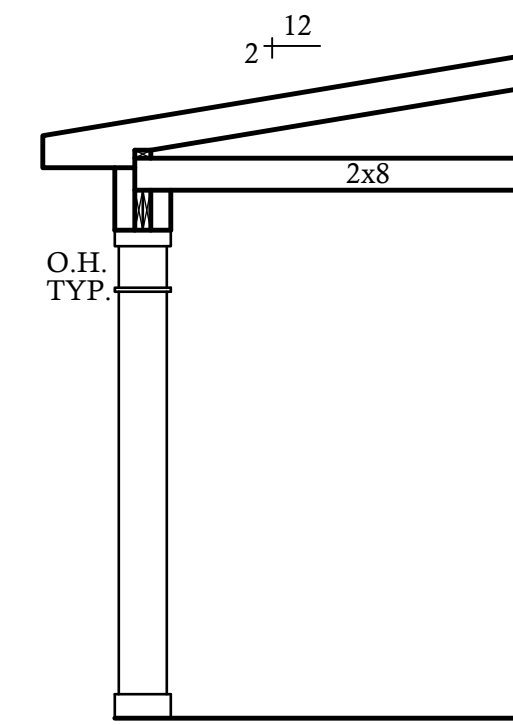
D BUILDING SECTION SCALE: 1/4"=1'-0"



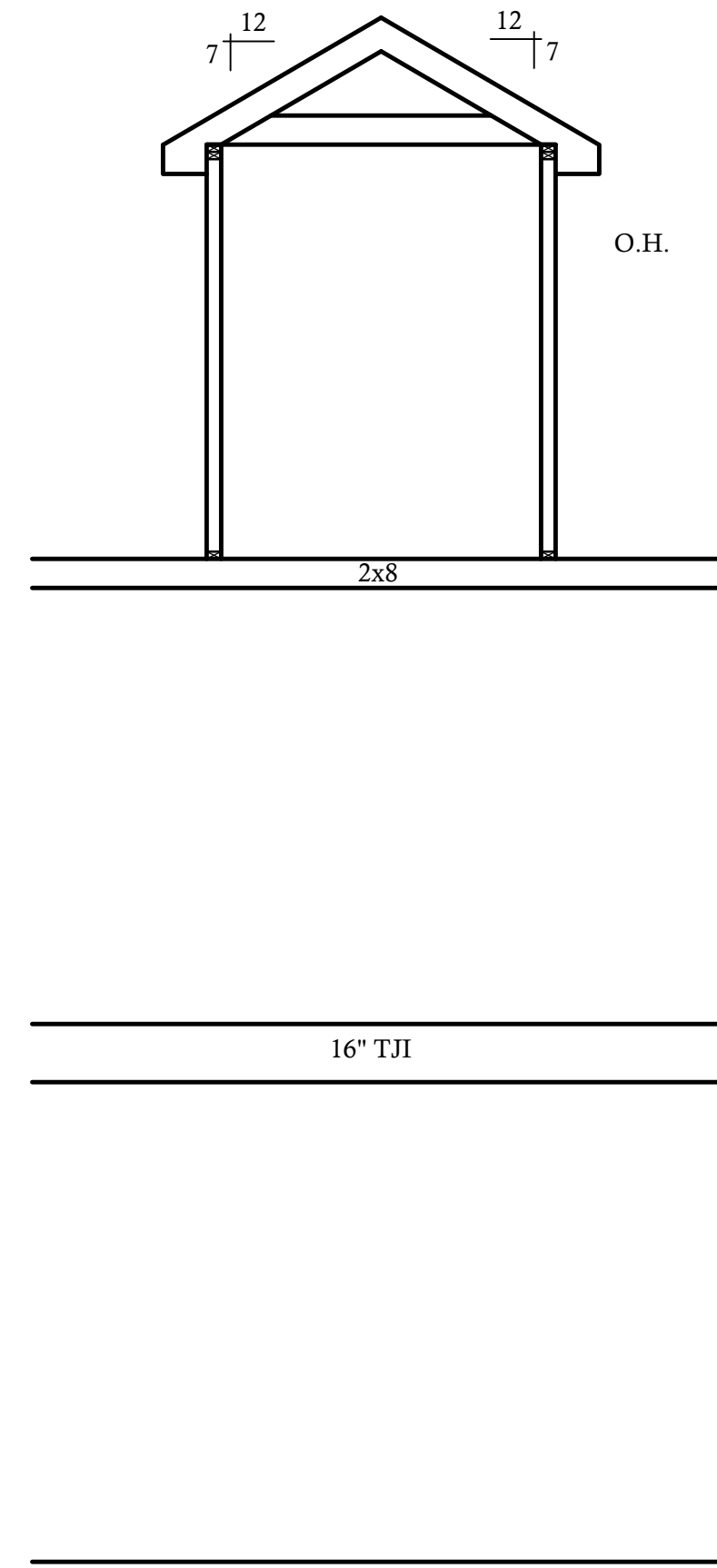
E BUILDING SECTION SCALE : 1/4"=1'-0"



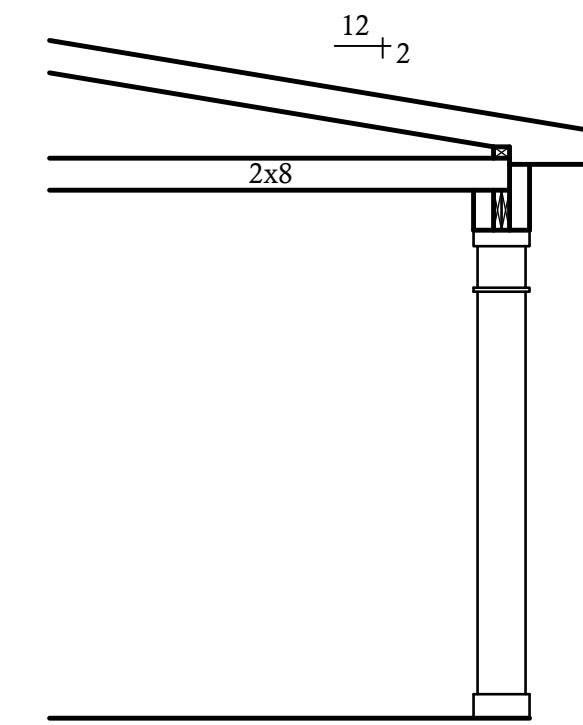
F BUILDING SECTION SCALE : 1/4"=1'-0"



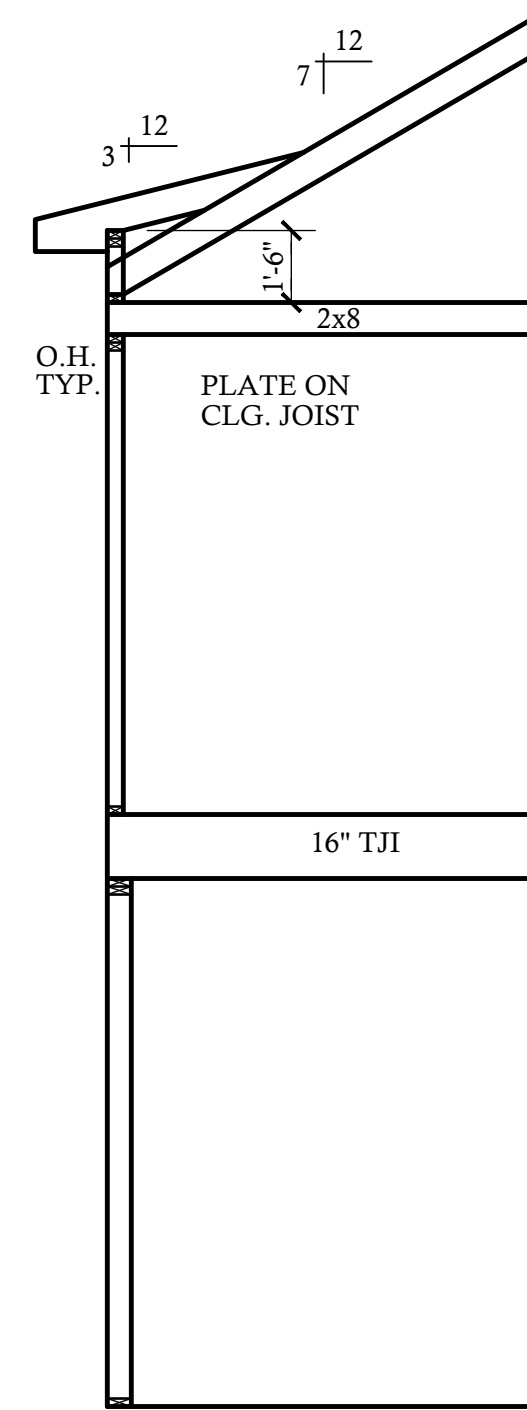
G BUILDING SECTION SCALE : 1/4"=1'-0"



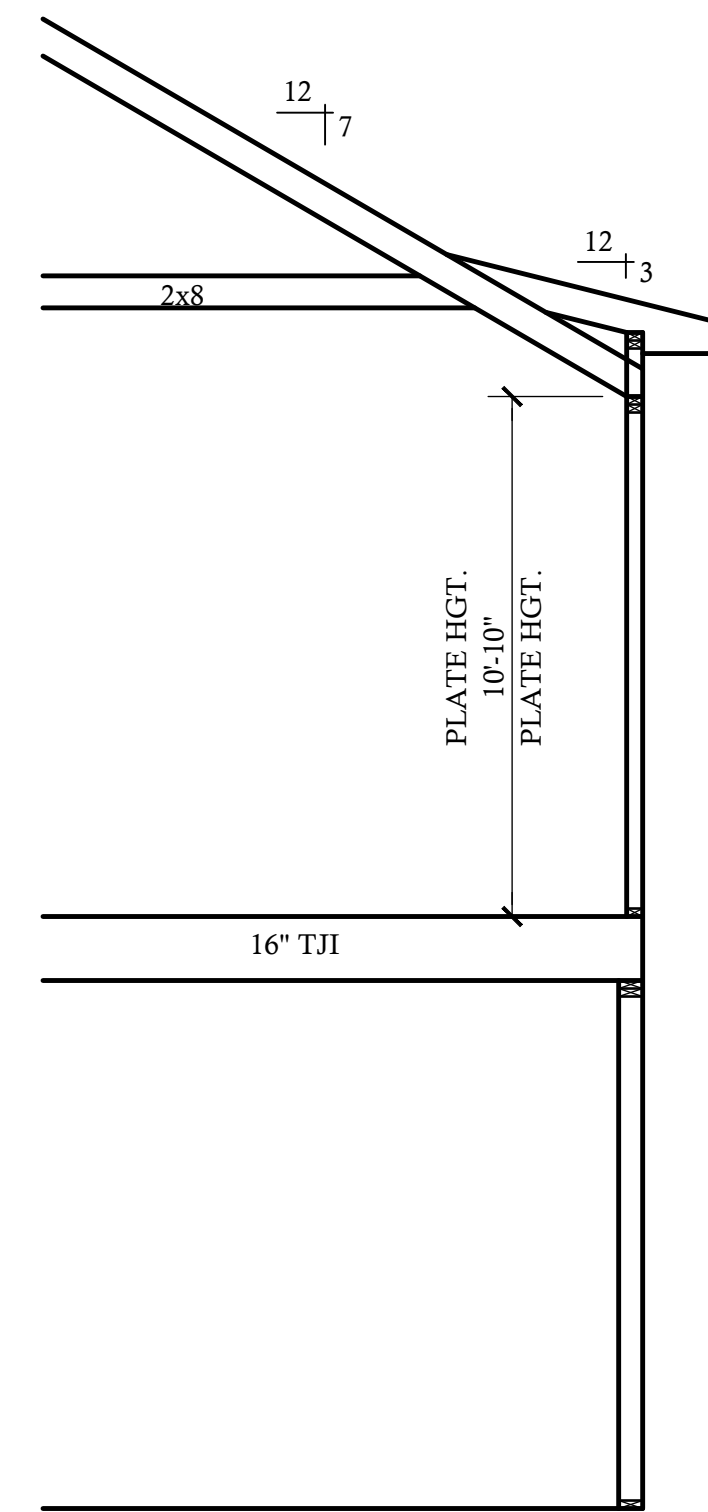
H BUILDING SECTION SCALE : 1/4"=1'-0"



I BUILDING SECTION SCALE : 1/4"=1'-0"



J BUILDING SECTION SCALE : 1/4"=1'-0"



K BUILDING SECTION SCALE : 1/4"=1'-0"