

**PLAN
SHOWING PROPOSED
SUBDIVISION**

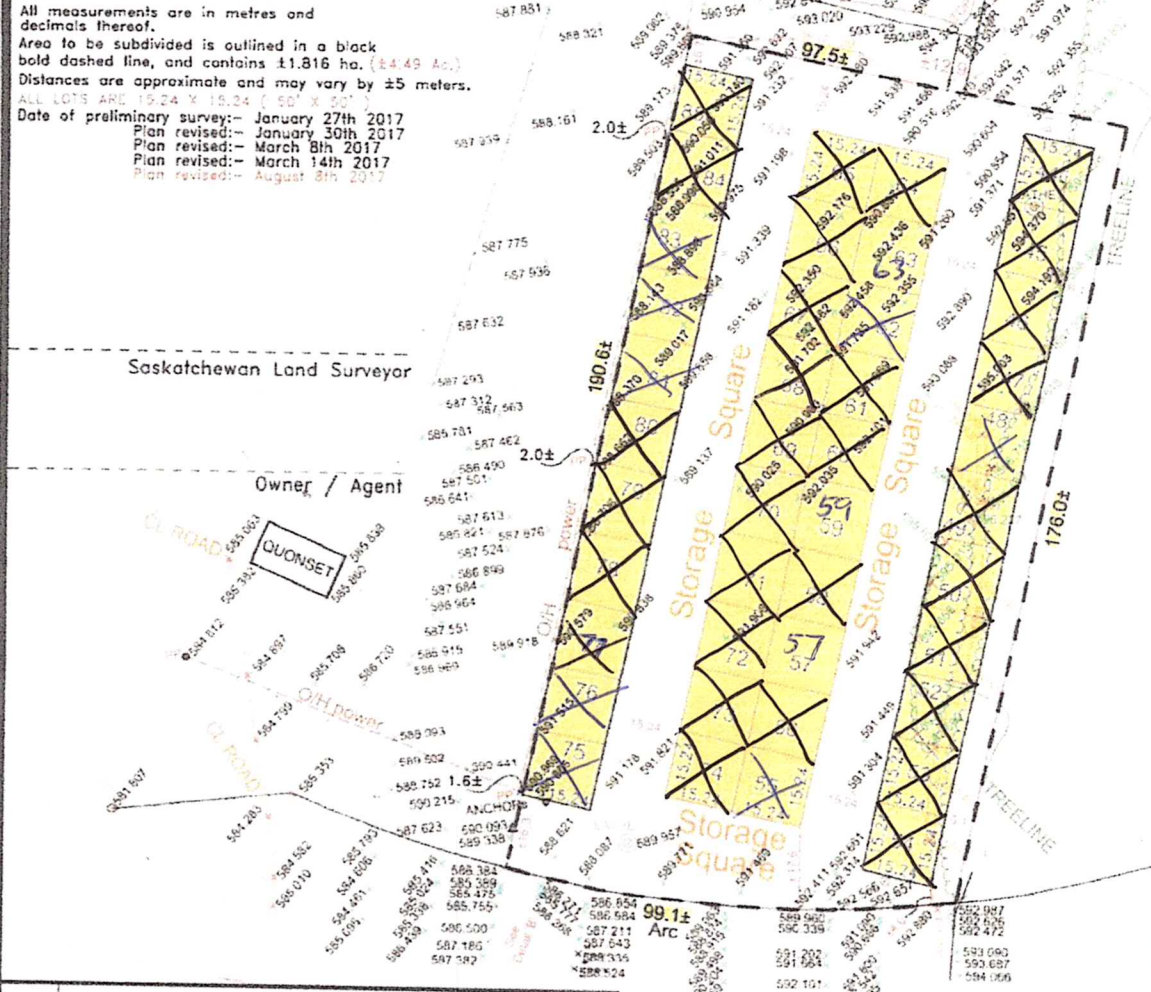
Detail "A"

S.E. 1/4 SEC. 8
Twp. 49, Rge. 8, W.3rd Mer.

**Resort Village of Echo Bay
RM of Spiritwood, No. 496**

**Saskatchewan
Scale 1:1000**

All measurements are in metres and decimals thereof.
Area to be subdivided is outlined in a black bold dashed line, and contains 11.816 ha. (29.49 Ac.)
Distances are approximate and may vary by ±5 meters.
ALL LOTS ARE 19.24 X 15.24 (50' X 50')
Date of preliminary survey:- January 27th 2017
Plan revised:- January 30th 2017
Plan revised:- March 8th 2017
Plan revised:- March 14th 2017
Plan revised:- August 8th 2017



Saskatchewan Land Surveyor

Owner / Agent



George, Nicholson, Franko, & Associates
Land Surveyors - Global Positioning Systems
Celebrating 107 Years of service to the Province of Saskatchewan
SINCE 1910

A Division of Meridian Surveys
Saskatoon, Canada
File No. ~ SG17016StorageSquare.dwg
Plan revised:- March 8th 2017
Plan revised:- March 14th 2017
Plan revised:- August 8th 2017

